

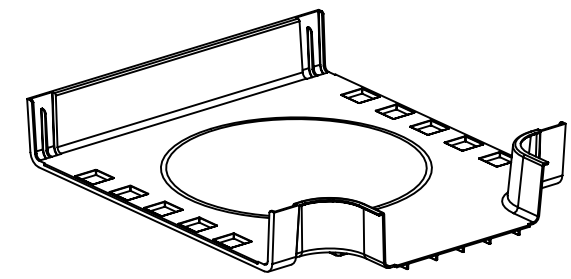
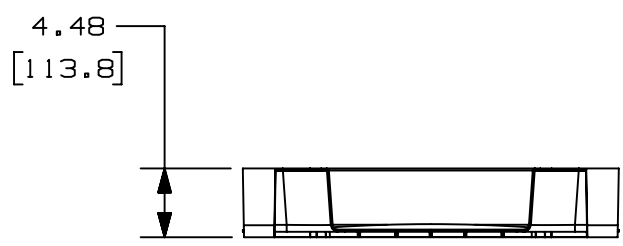
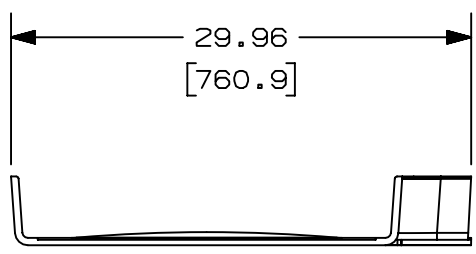
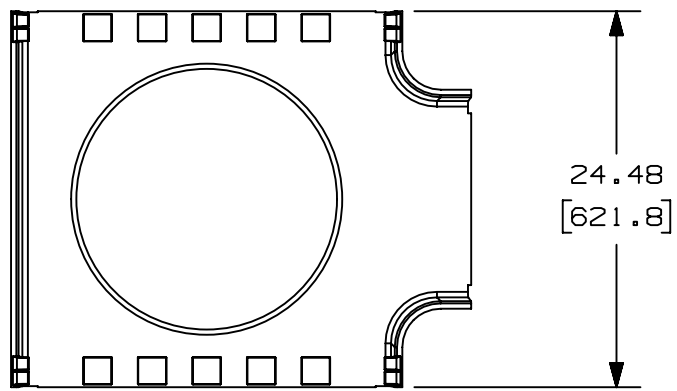
2

1

THIS COPY IS PROVIDED ON A RESTRICTED BASIS AND IS NOT TO BE USED IN ANY WAY DETRIMENTAL TO THE INTERESTS OF PANDUIT CORP.

NOTES:

- 1. SEE CURRENT CATALOG FOR ADDITIONAL PART SUFFIXES TO INDICATE COLOR AND/OR PACKAGE QUANTITY.
- 2. DIMENSIONS IN PARENTHESES ARE IN METRIC.
- 3. THE FIBERRUNNER 24x4 HORIZONTAL TEE WITH 12" EXIT IS DESIGNED WITH A MINIMUM 3" (76.2) BEND RADIUS TO PROTECT FIBER OPTIC CABLES.



PANDUIT PART NUMBER	WEIGHT	MATERIAL
FRT24X4W12**	5.82 LB/EACH (2640g/EACH)	ABS
FRT24X4W12L**	5.82 LB/EACH (2640g/EACH)	PC/ABS

B

B

A

A

REV	DATE	BY	CHK	APR	DESCRIPTION	ECN
00B	08/24/20	PJST	DWR	DWR	ADDED PART NUMBER	V09002DZ/11
R	10/21/08	MSO	SL		RELEASE TO PRODUCTION	39701-18

TITLE FIBERRUNNER 24x4 HORIZONTAL TEE WITH 12" EXIT (FRT24X4W12** & FRT24X4W12L**) CUSTOMER DRAWING					
ITEM REVISION NAME D39701BX/00				PANDUIT	
DATASET FILE NAME D39701BX_DC/00B FRT24X4W12					
DRAWING NUMBER: 39701-18				MATERIAL: SEE PART NUMBER TABLE ABOVE	
DRAWN BY MSO		DATE 10/21/08		THIRD ANGLE PROJECTION	
REV MSO		DATE 10/21/08		SCALE NONE	
SHT 1 OF 1				SIZE A	

2

1

D10100DA/14