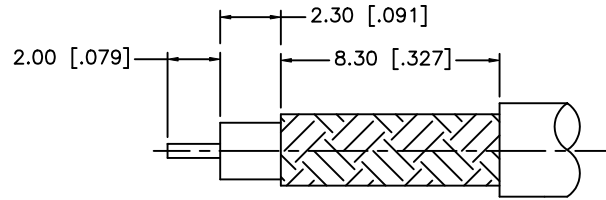
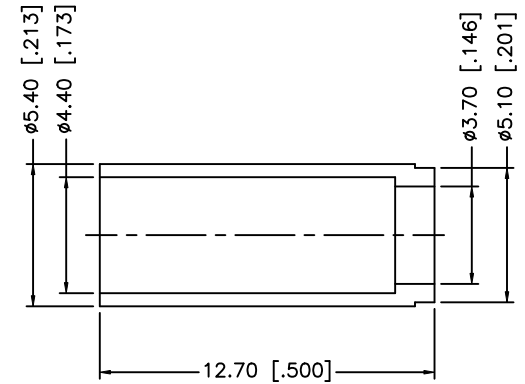
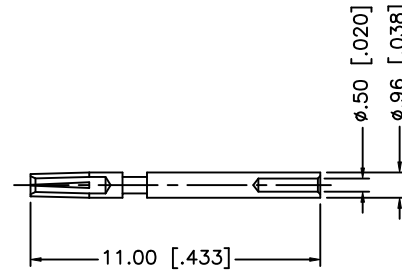
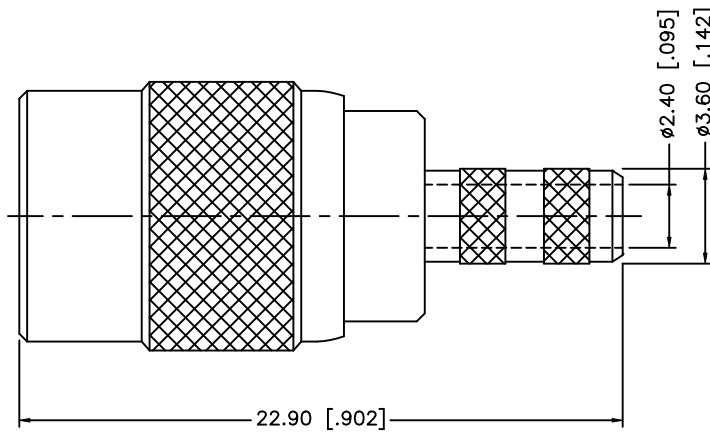


REV.	DATE	ECR NO.	DESCRIPTION
NC	05/31/00	-	INITIAL RELEASE
A	11/20/08	-	UPDATE DRAWING FORMAT, REVISE NOTES 1 AND 2.



RECOMMENDED
CABLE STRIPPING DIM'S



NOTES:

1. CRIMPED FERRULE HEX CRIMP SIZE .178" [4.52]
2. CONTACT PIN TO SOLDER.

8				UNLESS OTHERWISE SPECIFIED DIMENSIONS ARE IN MILLIMETERS. DIMENSIONS IN [] ARE IN INCHES AND FOR CUSTOMER REFERENCE ONLY.	APPROVALS	DATE	<h1 style="color: blue; margin: 0;">Amphenol Connex</h1>				
7				UNLESS OTHERWISE SPECIFIED TOLERANCES FOR MILLIMETERS ARE: 0.5 - 8mm ± 0.20mm 8 - 30mm ± 0.40mm 30 - 120mm ± 0.50mm	DRAWN GRS	11/20/08		PART DESCRIPTION			
6				UNLESS OTHERWISE SPECIFIED TOLERANCES FOR INCHES ARE: .020 - .315 = ± 0.007" .315 - 1.180 = ± 0.015" 1.180 - 4.724 = ± 0.020"	CHECKED				SMB SNAP LOCK PLUG (FOR AT&T 735A CABLE)		
5					ISSUED			PART NO.			
4	FERRULE	COPPER	NICKEL	1	SHEET 1 OF 1					142289	
3	CONTACT PIN	BER. COPPER	GOLD	1	CAD FILE	C:/142/142289.DWG	DWG. NO.	142289.DWG	REV. A	SIZE A	SCALE NA
2	INSULATOR	PTFE	NATURAL	1							
1	BODY	BRASS	NICKEL	1							
	DESCRIPTION	MATERIAL	FINISH	QTY	DO NOT SCALE DRAWING						