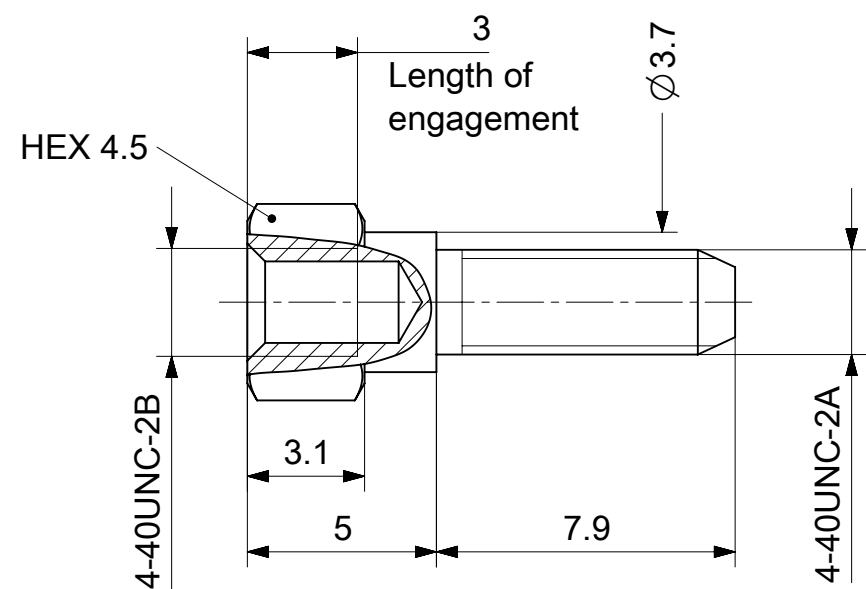


2:1



RoHS compliant
by exemption

1731121097	F62M093S245+S	Steel	Tin plated	1	-	-	-
1731121163	F-GSCH1/5-K1186SSN			1	-	-	-
1731120658	F-GSCH1/5-K1186SN			1	-	-	-
Material Number	FCT Part Number	Material	Surface	Screw (pc.)	Washer (pc.)	Spring washer (pc.)	Nut (pc.)

UNLESS OTHERWISE SPECIFIED DIMENSIONS FOR REFERENCE ONLY REPLACEMENT FOR DOCUMENT NUMBER: F62M093_D

Generally twice a material number respectively FCT part number is needed per connector.

Packaging specification: 1731120003-PK

FUNCTIONAL SYMBOLS $\frac{F}{A} = 0$ $\frac{F}{E} = 0$ $\frac{F}{P} = 0$ DIVISIONAL SYMBOLS	THIS DRAWING CONTAINS INFORMATION THAT IS PROPRIETARY TO MOLEX ELECTRONIC TECHNOLOGIES, LLC AND SHOULD NOT BE USED WITHOUT WRITTEN PERMISSION		CURRENT REV DESC:				
	DIMENSION UNITS	SCALE	EC NO: 685906				
	mm	5:1	DRWN: GOOLAM 2021/09/01				
	GENERAL TOLERANCES (UNLESS SPECIFIED)		CHK'D: MTEUBEL 2021/11/22		PRODUCT CUSTOMER DRAWING		
ANGULAR TOL ± °		APPR: MTEUBEL 2021/11/22					
4 PLACES ±		INITIAL REVISION:		DOCUMENT NUMBER	DOC TYPE	DOC PART	REVISION
3 PLACES ±		DRWN: GOOLAM 2021/09/01		1731120658	PSD	000	A
2 PLACES ±		APPR: MTEUBEL 2021/11/22					
1 PLACE ±		DRAFT WHERE APPLICABLE MUST REMAIN WITHIN DIMENSIONS		MATERIAL NUMBER	CUSTOMER		SHEET NUMBER
0 PLACES ±		FIRST ANGLE PROJECTION	DRAWING	SERIES	SEE TABLE	GENERAL MARKET	1 OF 1
			A4-SIZE	173112			