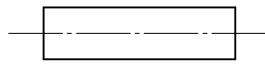
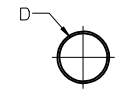




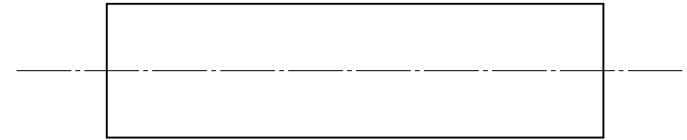
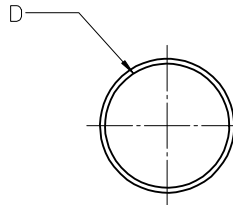
|   | 13                 | 12                    | 11                 | 10                    | 9                  | 8                     | 7                  | 6                     | 5                  | 4                     | 3                  | 2               | 1               |                       |
|---|--------------------|-----------------------|--------------------|-----------------------|--------------------|-----------------------|--------------------|-----------------------|--------------------|-----------------------|--------------------|-----------------|-----------------|-----------------------|
|   | BLACK              |                       | WHITE              |                       | RED                |                       | CLEAR              |                       | YELLOW             |                       | MIN                | MAX             | RECOVERED       | LENGTH<br>FEET/METERS |
|   | MATERIAL<br>NUMBER | ENGINEERING<br>NUMBER | MATERIAL<br>NUMBER | ENGINEERING<br>NUMBER | MATERIAL<br>NUMBER | ENGINEERING<br>NUMBER | MATERIAL<br>NUMBER | ENGINEERING<br>NUMBER | MATERIAL<br>NUMBER | ENGINEERING<br>NUMBER | EXPANDED<br>ID "D" | RECOVERED<br>ID | WALL THK<br>REF |                       |
| J | 192680018          | PFV-3/64-1BK          | 192680019          | PFV-3/64-1WT          | 192680020          | PFV-3/64-1RD          | 192680021          | PFV-3/64-1CL          | 192680022          | PFV-3/64-1YL          | .046/1.17          | .023/0.58       | .018/0.46       |                       |
|   | 192680043          | PFV-1/16-1BK          | 192680044          | PFV-1/16-1WT          | 192680045          | PFV-1/16-1RD          | 192680046          | PFV-1/16-1CL          | 192680047          | PFV-3/32-1YL          | .063/1.60          | .032/0.81       | .018/0.46       |                       |
|   | 192680068          | PFV-3/32-1BK          | 192680069          | PFV-3/32-1WT          | 192680070          | PFV-3/32-1RD          | 192680071          | PFV-3/32-1CL          | 192680072          | PFV-3/32-1YL          | .093/2.36          | .046/1.17       | .020/0.51       |                       |
|   | 192680093          | PFV-1/8-1BK           | 192680094          | PFV-1/8-1WT           | 192680095          | PFV-1/8-1RD           | 192680096          | PFV-1/8-1CL           | 192680097          | PFV-1/8-1YL           | .125/3.18          | .063/1.60       | .020/0.51       |                       |
|   | 192680118          | PFV-3/16-1BK          | 192680119          | PFV-3/16-1WT          | 192680120          | PFV-3/16-1RD          | 192680121          | PFV-3/16-1CL          | 192680122          | PFV-3/16-1YL          | .187/4.75          | .093/2.36       | .020/0.51       |                       |
|   | 192680143          | PFV-1/4-1BK           | 192680144          | PFV-1/4-1WT           | 192680145          | PFV-1/4-1RD           | 192680146          | PFV-1/4-1CL           | 192680147          | PFV-1/4-1YL           | .250/6.35          | .125/3.18       | .025/0.64       |                       |
| I | 192680193          | PFV-3/8-1BK           | 192680194          | PFV-3/8-1WT           | 192680195          | PFV-3/8-1RD           | 192680196          | PFV-3/8-1CL           | 192680197          | PFV-3/8-1YL           | .375/9.53          | .187/4.75       | .025/0.64       |                       |
|   | 192680218          | PFV-1/2-1BK           | 192680219          | PFV-1/2-1WT           | 192680220          | PFV-1/2-1RD           | 192680221          | PFV-1/2-1CL           | 192680222          | PFV-1/2-1YL           | .500/12.70         | .250/6.35       | .025/0.64       | 4.0/1.2               |
|   | 192680243          | PFV-5/8-1BK           | 192680244          | PFV-5/8-1WT           | 192680245          | PFV-5/8-1RD           | 192680246          | PFV-5/8-1CL           | 192680247          | PFV-5/8-1YL           | .625/15.88         | .313/7.95       | .025/0.64       |                       |
|   | 192680268          | PFV-3/4-1BK           | 192680269          | PFV-3/4-1WT           | 192680270          | PFV-3/4-1RD           | 192680271          | PFV-3/4-1CL           | 192680272          | PFV-3/4-1YL           | .750/19.05         | .375/9.53       | .035/0.89       |                       |
|   | 192680293          | PFV-1-1BK             | 192680294          | PFV-1-1WT             | 192680295          | PFV-1-1RD             | 192680296          | PFV-1-1CL             | 192680297          | PFV-1-1YL             | 1.000/25.40        | .500/12.70      | .035/0.89       |                       |
|   | 192680318          | PFV-1-1/4-1BK         | 192680319          | PFV-1-1/4-1WT         | 192680320          | PFV-1-1/4-1RD         | 192680321          | PFV-1-1/4-1CL         | 192680322          | PFV-1-1/4-1YL         | 1.250/31.75        | .630/16.00      | .035/0.89       |                       |
| H | 192680343          | PFV-1-1/2-1BK         | 192680344          | PFV-1-1/2-1WT         | 192680345          | PFV-1-1/2-1RD         | 192680346          | PFV-1-1/2-1CL         | 192680347          | PFV-1-1/2-1YL         | 1.500/38.10        | .750/19.05      | .040/1.02       |                       |
|   | 192680368          | PFV-2-1BK             | 192680369          | PFV-2-1WT             | 192680370          | PFV-2-1RD             | 192680371          | PFV-2-1CL             | 192680372          | PFV-2-1YL             | 2.000/50.80        | 1.000/25.40     | .045/1.14       |                       |
|   | 192680393          | PFV-3-1BK             | 092680394          | PFV-3-1WT             | 192680395          | PFV-3-1RD             | 192680396          | PFV-3-1CL             | 192680397          | PFV-3-1YL             | 3.000/76.20        | 1.500/38.10     | .050/1.27       |                       |
|   | 192680418          | PFV-4-1BK             | 192680419          | PFV-4-1WT             | 192680420          | PFV-4-1RD             | 192680421          | PFV-4-1CL             | 192680422          | PFV-4-1YL             | 4.000/101.60       | 2.000/50.80     | .055/1.40       |                       |
|   | 192680033          | PFV-3/64-4BK          | 192680034          | PFV-3/64-4WT          | 192680035          | PFV-3/64-4RD          | 192680036          | PFV-3/64-4CL          | 192680037          | PFV-3/64-4YL          | .046/1.17          | .023/0.58       | .018/0.46       | 1000/304.8            |
|   | 192680058          | PFV-1/16-4BK          | 192680059          | PFV-1/16-4WT          | 192680060          | PFV-1/16-4RD          | 192680061          | PFV-1/16-4CL          | 192680062          | PFV-1/16-4YL          | .063/1.60          | .032/0.81       | .018/0.46       | SPOOL                 |
| G | 192680083          | PFV-3/32-4BK          | 192680084          | PFV-3/32-4WT          | 192680085          | PFV-3/32-4RD          | 192680086          | PFV-3/32-4CL          | 192680087          | PFV-3/32-4YL          | .093/2.36          | .046/1.17       | .020/0.51       |                       |
|   | 192680108          | PFV-1/8-4BK           | 192680109          | PFV-1/8-4WT           | 192680110          | PFV-1/8-4RD           | 192680111          | PFV-1/8-4CL           | 192680112          | PFV-1/8-4YL           | .125/3.18          | .063/1.60       | .020/0.51       |                       |
|   | 192680133          | PFV-3/16-4BK          | 192680134          | PFV-3/16-4WT          | 192680135          | PFV-3/16-4RD          | 192680136          | PFV-3/16-4CL          | 192680137          | PFV-3/16-4YL          | .187/4.75          | .093/2.36       | .020/0.51       |                       |
|   | 192680158          | PFV-1/4-4BK           | 192680159          | PFV-1/4-4WT           | 192680160          | PFV-1/4-4RD           | 192680161          | PFV-1/4-4CL           | 192680162          | PFV-1/4-4YL           | .250/6.35          | .125/3.18       | .025/0.64       | 500/152.4 SPOOL       |
|   | 192680208          | PFV-3/8-4BK           | 192680209          | PFV-3/8-4WT           | 192680210          | PFV-3/8-4RD           | 192680211          | PFV-3/8-4CL           | 192680212          | PFV-3/8-4YL           | .375/9.53          | .187/4.75       | .025/0.64       |                       |
|   | 192680233          | PFV-1/2-4BK           | 192680234          | PFV-1/2-4WT           | 192680235          | PFV-1/2-4RD           | 192680236          | PFV-1/2-4CL           | 192680237          | PFV-1/2-4YL           | .500/12.70         | .250/6.35       | .025/0.64       | 200/60.8 SPOOL        |
|   | 192680258          | PFV-5/8-4BK           | 192680259          | PFV-5/8-4WT           | 192680260          | PFV-5/8-4RD           | 192680261          | PFV-5/8-4CL           | 192680262          | PFV-5/8-5YL           | .625/15.88         | .313/7.95       | .025/0.64       |                       |
| F | 192680283          | PFV-3/4-4BK           | 192680284          | PFV-3/4-4WT           | 192680285          | PFV-3/4-4RD           | 192680286          | PFV-3/4-4CL           | 192680287          | PFV-3/4-4YL           | .750/19.05         | .375/9.53       | .035/0.89       |                       |
|   | 192680308          | PFV-1-4BK             | 192680309          | PFV-1-4WT             | 192680310          | PFV-1-4RD             | 192680311          | PFV-1-4CL             | 192680312          | PFV-1-4YL             | 1.000/25.40        | .500/12.70      | .035/0.89       |                       |
|   | 192680333          | PFV-1-1/4-4BK         | 192680334          | PFV-1-1/4-4WT         | 192680335          | PFV-1-1/4-4RD         | 192680336          | PFV-1-1/4-4CL         | 192680337          | PFV-1-1/4-4YL         | 1.250/31.75        | .630/16.00      | .035/0.89       |                       |
|   | 192680038          | PFV-3/64-5BK          | 192680039          | PFV-3/64-5WT          | 192680040          | PFV-3/64-5RD          | 192680041          | PFV-3/64-5CL          | 192680042          | PFV-3/64-5YL          | .046/1.17          | .023/0.58       | .018/0.46       |                       |
|   | 192680063          | PFV-1/16-5BK          | 192680064          | PFV-1/16-5WT          | 192680065          | PFV-1/16-5RD          | 192680066          | PFV-1/16-5CL          | 192680067          | PFV-1/16-5YL          | .063/1.60          | .032/0.81       | .018/0.46       |                       |
|   | 192680088          | PFV-3/32-5BK          | 192680089          | PFV-3/32-5WT          | 192680090          | PFV-3/32-5RD          | 192680091          | PFV-3/32-5CL          | 192680092          | PFV-3/32-5YL          | .093/2.36          | .046/1.17       | .020/0.51       |                       |
| E | 192680113          | PFV-1/8-5BK           | 192680114          | PFV-1/8-5WT           | 192680115          | PFV-1/8-5RD           | 192680116          | PFV-1/8-5CL           | 192680117          | PFV-1/8-5YL           | .125/3.18          | .063/1.60       | .020/0.51       | 100/30.4 SPOOL        |
|   | 192680138          | PFV-3/16-5BK          | 192680139          | PFV-3/16-5WT          | 192680140          | PFV-3/16-5RD          | 192680141          | PFV-3/16-5CL          | 192680142          | PFV-3/16-5YL          | .187/4.75          | .093/2.36       | .020/0.51       |                       |
|   | 192680163          | PFV-1/4-5BK           | 192680164          | PFV-1/4-5WT           | 192680165          | PFV-1/4-5RD           | 192680166          | PFV-1/4-5CL           | 192680167          | PFV-1/4-5YL           | .250/6.35          | .125/3.18       | .025/0.64       |                       |
|   | 192680213          | PFV-3/8-5BK           | 192680214          | PFV-3/8-5WT           | 192680215          | PFV-3/8-5RD           | 192680216          | PFV-3/8-5CL           | 192680217          | PFV-3/8-5YL           | .375/9.53          | .187/4.75       | .025/0.64       |                       |
|   | 192680238          | PFV-1/2-5BK           | 192680239          | PFV-1/2-5WT           | 192680240          | PFV-1/2-5RD           | 192680241          | PFV-1/2-5CL           | 192680242          | PFV-1/2-5YL           | .500/12.70         | .250/6.35       | .025/0.64       |                       |
|   | 192680263          | PFV-5/8-5BK           | 192680264          | PFV-5/8-5WT           | 192680265          | PFV-5/8-5RD           | 192680266          | PFV-5/8-5CL           | 192680267          | PFV-5/8-5YL           | .625/15.88         | .313/7.95       | .025/0.64       |                       |
|   | 192680358          | PFV-1-1/2-4BK         | 192680359          | PFV-1-1/2-4WT         | 192680360          | PFV-1-1/2-4RD         | 192680361          | PFV-1-1/2-4CL         | 192680362          | PFV-1-1/2-4YL         | 1.500/38.10        | .750/19.05      | .040/1.02       |                       |
| D | 192680383          | PFV-2-4BK             | 192680384          | PFV-2-4WT             | 192680385          | PFV-2-4RD             | 192680386          | PFV-2-4CL             | 192680387          | PFV-2-4YL             | 2.000/50.80        | 1.000/25.40     | .045/1.14       |                       |
|   | 192680408          | PFV-3-4BK             | 192680409          | PFV-3-4WT             | 192680410          | PFV-3-4RD             | 192680411          | PFV-3-4CL             | 192680412          | PFV-3-4YL             | 3.000/76.20        | 1.500/38.10     | .050/1.27       |                       |
|   | 192680433          | PFV-4-4BK             | 192680434          | PFV-4-4WT             | 192680435          | PFV-4-4RD             | 192680436          | PFV-4-4CL             | 192680437          | PFV-4-4YL             | 4.000/101.60       | 2.000/50.80     | .055/1.40       | 50/15.3 SPOOL         |



- NOTES:
- MATERIAL: PVC.
  - OTHER CUT LENGTHS ARE AVAILABLE.
  - PARTS ARE RoHS COMPLIANT.

|   |                               |   |   |                                     |                           |                               |                             |   |                           |
|---|-------------------------------|---|---|-------------------------------------|---------------------------|-------------------------------|-----------------------------|---|---------------------------|
| <b>CHANGED TITLE</b><br>EC NO: IPGZ2013-0982<br>DRWINGRO JASO1 2013/01/10<br>CHKD: JACNEIL 2013/01/10<br>APPR: JACNEIL 2013/01/31 | QUALITY SYMBOLS<br>▽=0<br>▽=0 | GENERAL TOLERANCES (UNLESS SPECIFIED)   |   | DIMENSION STYLE<br><b>IN/MM</b>     |                           | SCALE<br><b>1:1</b>           | DESIGN UNITS<br><b>INCH</b> | THIRD ANGLE PROJECTION  |                           |
|   |                               | 4 PLACES ± --- ± ---<br>3 PLACES ± --- ± .010<br>2 PLACES ± 0.25 ± .02<br>1 PLACE ± 0.5 ± --- | mm INCH<br>± --- ± ---<br>± .010 ± .02<br>± 0.5 ± --- | DRAWN BY<br><b>BENDERLE</b>         | DATE<br><b>2004/09/23</b> | CHECKED BY<br><b>R DEROSS</b> | DATE<br><b>2004/09/23</b>   | APPROVED BY<br><b>JFMURPHY</b>  | DATE<br><b>2010/04/07</b> |
| DRAFT WHERE APPLICABLE MUST REMAIN WITHIN DIMENSIONS  |                               | MATERIAL NO.<br><b>SEE CHART</b>  |   | DOCUMENT NO.<br><b>SD-19268-001</b> |                           | SHEET NO.<br><b>1 OF 1</b>    |                             | THIS DRAWING CONTAINS INFORMATION THAT IS PROPRIETARY TO MOLEX INCORPORATED AND SHOULD NOT BE USED WITHOUT WRITTEN PERMISSION |                           |

| BLACK           |                    | CLEAR           |                    | MIN             | MAX          | RECOVERED    | LENGTH<br>FEET/METERS |
|-----------------|--------------------|-----------------|--------------------|-----------------|--------------|--------------|-----------------------|
| MATERIAL NUMBER | ENGINEERING NUMBER | MATERIAL NUMBER | ENGINEERING NUMBER | EXPANDED ID "D" | RECOVERED ID | WALL THK REF |                       |
| 192690008       | PF3-1/8-1BK        |                 |                    | .125/3.018      | .040/1.02    | .038/0.97    | 4.0/1.2               |
| 192690013       | PF3-3/16-1BK       |                 |                    | .187/4.75       | .060/1.52    | .045/1.14    |                       |
|                 |                    | 192690043       | PF3-3/16-1CL       | .225/5.72       | .050/1.27    | .045/1.14    |                       |
| 192690018       | PF3-1/4-1BK        |                 |                    | .250/6.35       | .080/2.03    | .047/1.19    |                       |
|                 |                    | 192690048       | PF3-1/4-1CL        | .293/7.44       | .065/1.65    | .047/1.19    |                       |
| 192690023       | PF3-3/8-1BK        |                 |                    | .375/9.53       | .120/3.05    | .050/1.27    |                       |
|                 |                    | 192690053       | PF3-3/8-1CL        | .427/10.85      | .095/2.43    | .050/1.27    |                       |
| 192690028       | PF3-1/2-1BK        |                 |                    | .500/12.70      | .157/3.99    | .055/1.40    |                       |
|                 |                    | 192690058       | PF3-1/2-1CL        | .700/17.78      | .175/4.45    | .055/1.40    |                       |
| 192690033       | PF3-3/4-1BK        |                 |                    | .750/19.05      | .230/5.84    | .065/1.65    |                       |
| 192690038       | PF3-1-1BK          |                 |                    | 1.000/25.40     | .320/8.13    | .075/1.90    |                       |



SALES DRAWING

NOTES:

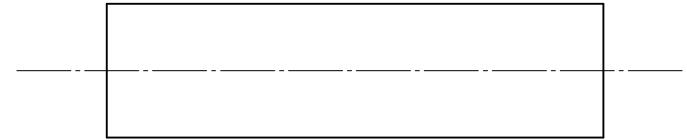
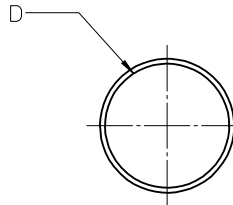
(A1)

- MATERIAL: POLYOLEFIN WITH ADHESIVE LINER.
- OTHER CUT LENGTHS ARE AVAILABLE.
- PARTS ARE RoHS COMPLIANT.

(A1)

|  |                 |  |                       |   |                      |  |                                    |                              |
|--|-----------------|--|-----------------------|---|----------------------|--|------------------------------------|------------------------------|
| CORRECT MAT'L<br>EC NO: ICG2013-0982<br>DRWN:GROJASO1 2013/01/10<br>CHKD:JMACNEIL 2013/01/10<br>APPR:JMACNEIL 2013/01/31 | QUALITY SYMBOLS | GENERAL TOLERANCES (UNLESS SPECIFIED)                |                       | DIMENSION STYLE<br>IN/MM  |                      | SCALE<br>1:1   | DESIGN UNITS<br>INCH               | THIRD ANGLE PROJECTION       |
|  | ▽=0             | mm   | INCH                  | DRAWN BY  | DATE                 | TITLE<br>(A1) POLYOLEFIN W/ ADHESIVE LINER HEAT SHRINK TUBING 19269 SERIES | MATERIAL NO.<br>MOLEX INCORPORATED | DOCUMENT NO.<br>SD-19269-001 |
|  | ▽=0             | 4 PLACES ± --- ± ---                                 | 3 PLACES ± --- ± .010 | BENDERLE  | 2004/09/23           |  |                                    |                              |
|  |                 | 2 PLACES ± 0.25 ± .02                                | 1 PLACE ± 0.51 ± ---  | 2 PLACES ± 0.25 ± .02   | 1 PLACE ± 0.51 ± --- | DATE   | SHEET NO.<br>1 OF 1                |                              |
|  | ANGULAR ± ---°  | DRAFT WHERE APPLICABLE MUST REMAIN WITHIN DIMENSIONS |                       | APPROVED BY   | DATE                 |  |                                    |                              |
| A1   | REV             | SEE CHART  |                       | THIS DRAWING CONTAINS INFORMATION THAT IS PROPRIETARY TO MOLEX INCORPORATED AND SHOULD NOT BE USED WITHOUT WRITTEN PERMISSION |                      |  |                                    |                              |

| BLACK           |                    | RED             |                    | MIN             | MAX          | RECOVERED    | LENGTH      |
|-----------------|--------------------|-----------------|--------------------|-----------------|--------------|--------------|-------------|
| MATERIAL NUMBER | ENGINEERING NUMBER | MATERIAL NUMBER | ENGINEERING NUMBER | EXPANDED ID "D" | RECOVERED ID | WALL THK REF | FEET/METERS |
| 192700008       | PFB-04-1BK         | 192700013       | PFB-04-1RD         | .400/10.16      | .150/3.81    | .060/1.53    | 4.0/1.2     |
| 192700018       | PFB-07-1BK         | 192700023       | PFB-07-1RD         | .750/19.05      | .220/5.59    | .095/2.41    |             |
| 192700028       | PFB-11-1BK         | 192700033       | PFB-11-1RD         | 1.100/27.94     | .375/9.53    | .120/3.05    |             |
| 192700038       | PFB-15-1BK         | 192700043       | PFB-15-1RD         | 1.500/38.10     | .500/19.05   | .140/3.56    |             |
| 192700048       | PFB-20-1BK         | 192700053       | PFB-20-1RD         | 2.000/50.80     | .750/19.05   | .155/3.98    |             |
| 192700058       | PFB-30-1BK         | 192700063       | PFB-30-1RD         | 3.540/89.92     | 1.18/29.97   | .155/3.98    |             |
| 192700068       | PFB-40-1BK         | 192700073       | PFB-40-1RD         | 4.72/119.89     | 1.57/39.88   | .170/4.37    |             |



### SALES DRAWING

NOTES:

1. MATERIAL: POLYOLEFIN
2. OTHER CUT LENGTHS ARE AVAILABLE.
3. PARTS ARE RoHS COMPLIANT.

(A1)

|  |                               |                                       |              |   |                         |                     |                             |   |  |  |
|--|-------------------------------|---------------------------------------|--------------|---|-------------------------|---------------------|-----------------------------|---|--|--|
| <b>CHANGED TITLE</b><br>EC NO: IPG2013-0982<br>DRAWN:GROJASO1 2013/01/10<br>CHKD:JMAGNEIL 2013/01/10<br>APPR:JMAGNEIL 2013/01/31 | QUALITY SYMBOLS<br>▽=0<br>▽=0 | GENERAL TOLERANCES (UNLESS SPECIFIED) |              | DIMENSION STYLE<br><b>IN/MM</b>   |                         | SCALE<br><b>1:1</b> | DESIGN UNITS<br><b>INCH</b> | THIRD ANGLE PROJECTION                                    |  |  |
|  |                               | 4 PLACES ± --- ± ---                  | mm           | INCH  | DRAWN BY<br>BENDERLE    | DATE<br>2004/09/23  | (A1)                        | <b>POLYOLEFIN<br/>HEAT SHRINK TUBING<br/>19270 SERIES</b> |  |  |
|  |                               | 3 PLACES ± --- ± .010                 |              |   | CHECKED BY<br>R DEROSS  | DATE<br>2004/09/23  |                             |   |  |  |
|  |                               | 2 PLACES ± 0.25 ± .02                 |              |   | APPROVED BY<br>R DEROSS |                     | DATE<br>2004/09/23          | <b>MOLEX INCORPORATED</b>                                 |  |  |
| 1 PLACE ± 0.51 ± ---   |                               |                                       | MATERIAL NO. |   | DOCUMENT NO.            | SD-19270-001        |                             |   |  |  |
| DRAFT WHERE APPLICABLE MUST REMAIN WITHIN DIMENSIONS   |                               | SEE CHART                             |              | THIS DRAWING CONTAINS INFORMATION THAT IS PROPRIETARY TO MOLEX INCORPORATED AND SHOULD NOT BE USED WITHOUT WRITTEN PERMISSION |                         |                     |                             |   |  |  |
| A1   |                               | B                                     |              |   |                         |                     |                             |   |  |  |