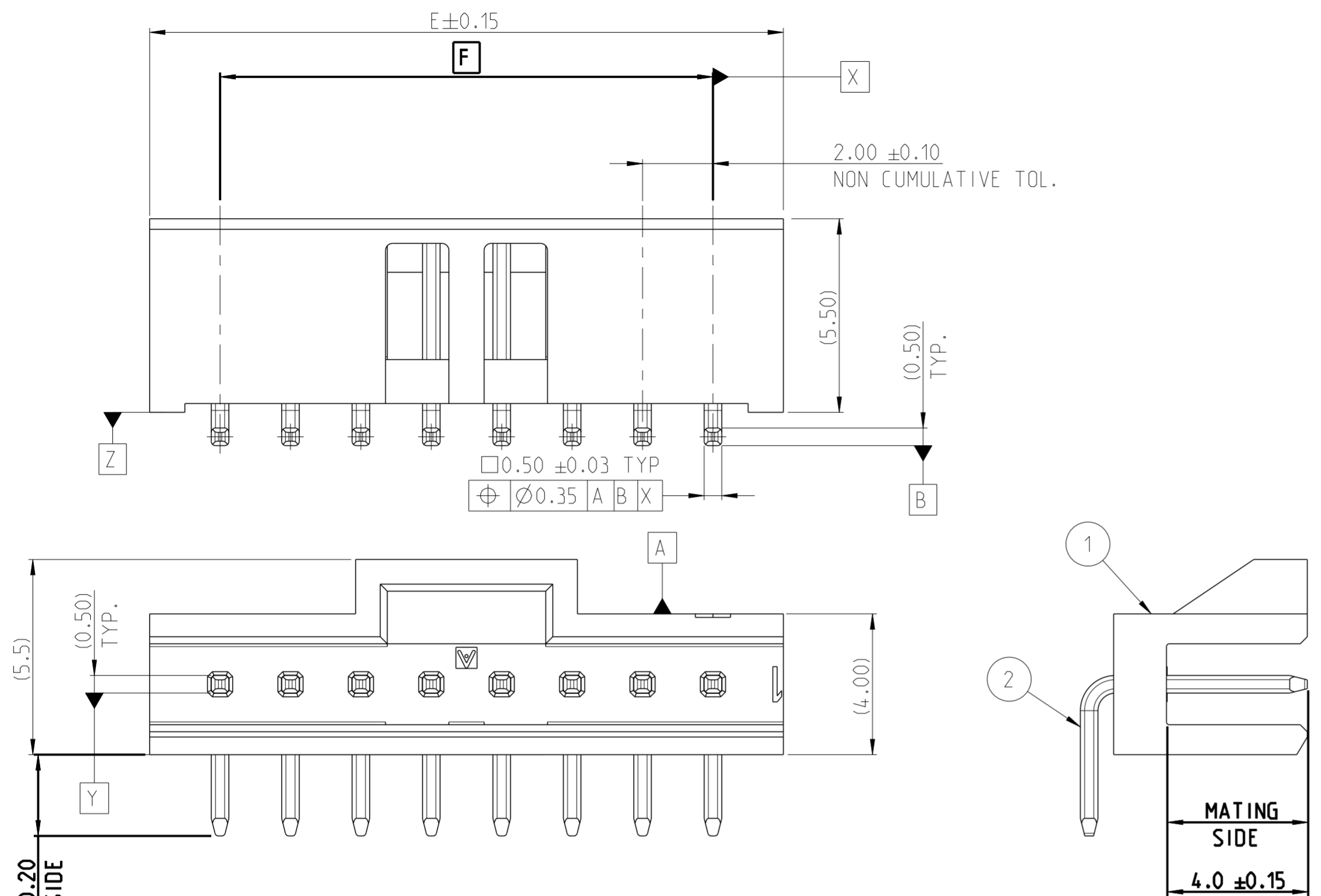


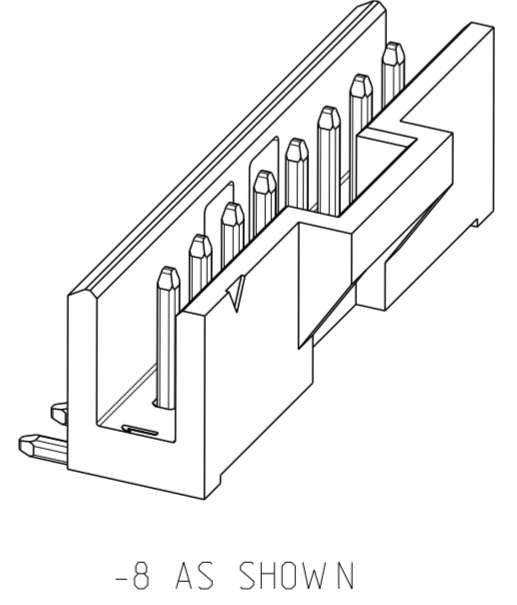
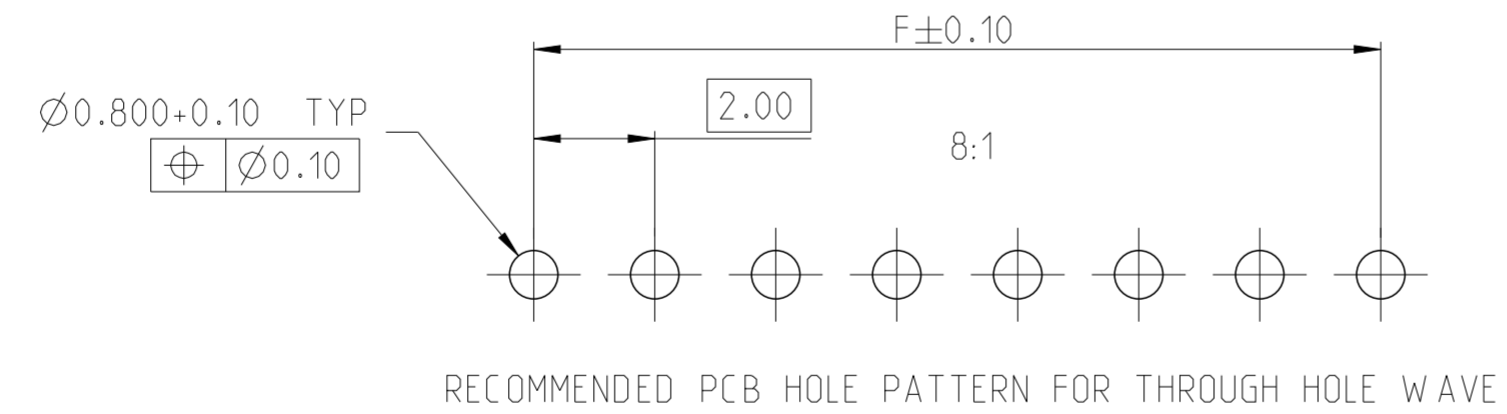
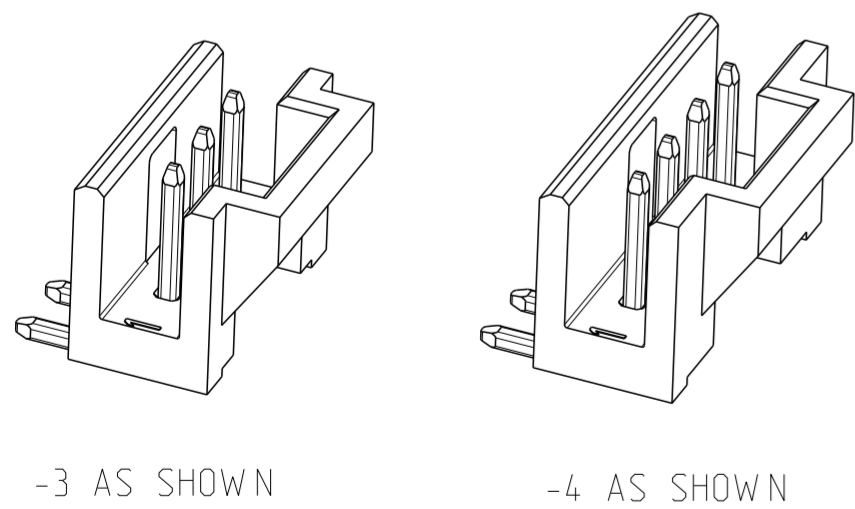
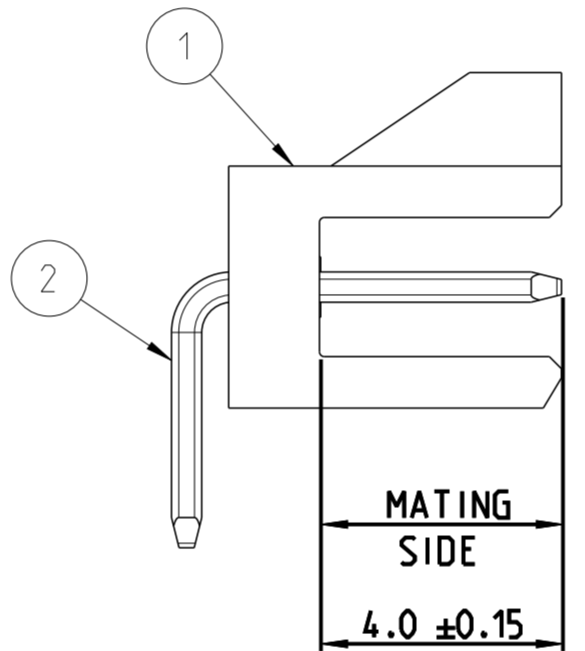
THIS DRAWING IS UNPUBLISHED. RELEASED FOR PUBLICATION. © COPYRIGHT 2016 TE CONNECTIVITY ALL RIGHTS RESERVED.

| REVISIONS | | | | |
|-----------|-----|-----------------------|-----------|-------|
| P | LTR | DESCRIPTION | DATE | APVD |
| A | | RELEASE TO PRODUCTION | 20SEP2022 | DK PS |



NOTES:

- MATERIAL**
HOUSING: HIGH TEMPERATURE THERMO PLASTIC , UL94-V0;COLOR-BLACK
POST : PHOSPHOR BRONZE
- FINISH:**
 - 3 - 5 μm TIN OVER MIN 1.27 μm NICKEL UNDER PLATING
 - MATING SIDE: MIN 0.38 μm GOLD OVER MIN 1.27 μm NICKEL UNDER PLATING
SOLDER SIDE: 4 - 6 μm TIN OVER MIN 1.27 μm NICKEL UNDER PLATING
 - MATING SIDE: MIN 0.76 μm GOLD OVER MIN 1.27 μm NICKEL UNDER PLATING
SOLDER SIDE: 4 - 6 μm TIN OVER MIN 1.27 μm NICKEL UNDER PLATING
- FOR SMART PART NUMBER, NO. OF POSITIONS PER CONNECTOR HAS TO BE ADDED NEXT TO NO. OF ROWS (2MM-HSP-S__HT-_-_-_-). REFER SHEET 2 NOMENCLATURE.
FOR EXAMPLE: 2MM-HSP-S03-HT-01-T-TB = 3 POSITION.
2MM-HSP-S16-HT-01-T-TB = 16 POSITION.
- PACKAGING:
 - A. TAPE & REEL WITHOUT (W/O) CAP.
 - B. TUBE WITHOUT (W/O) CAP
 - C. BOX WITHOUT (W/O) CAP.
- PART NUMBER AVAILABLE UPON CUSTOMER REQUEST.



| | |
|-------------|----------|
| POST | 2 |
| HOUSING | 1 |
| DESCRIPTION | ITEM NO. |

| | | |
|---------|---------|------------------------|
| 30 | 34 | 16 |
| 28 | 32 | 15 |
| 26 | 30 | 14 |
| 24 | 28 | 13 |
| 22 | 26 | 12 |
| 20 | 24 | 11 |
| 18 | 22 | 10 |
| 16 | 20 | 9 |
| 14 | 18 | 8 |
| 12 | 16 | 7 |
| 10 | 14 | 6 |
| 8 | 12 | 5 |
| 6 | 10 | 4 |
| 4 | 8 | 3 |
| DIM "F" | DIM "E" | POSITION PER CONNECTOR |

THIS DRAWING IS A CONTROLLED DOCUMENT.

| | | | | | | | | | |
|--------------------|--|---|---|---|--|--------------|-----------------|-----------------------|-----------------|
| DIMENSIONS: mm | TOLERANCES UNLESS OTHERWISE SPECIFIED: 0 PLC ± 1 PLC ±0.1 2 PLC ±0.05 3 PLC ± 4 PLC ± | APVD PRASHANTH S 7 JUL 2016 PRODUCT SPEC 108-64040 APPLICATION SPEC 114-64040 | DWN RAKESH 7 JUL 2016 CHK KARTHIK J K 7 JUL 2016 | APVD PRASHANTH S 7 JUL 2016 PRODUCT SPEC 108-64040 APPLICATION SPEC 114-64040 | NAME AMPMODU 2mm,SHROUDED MTE HEADER SINGLE ROW, RIGHT ANGLE | SIZE A2 | CAGE CODE 00779 | DRAWING NO. C-2823187 | RESTRICTED TO - |
| MATERIAL SEE NOTES | FINISH SEE NOTES | WEIGHT | CUSTOMER DRAWING | | SCALE 8:1 | SHEET 1 OF 2 | REV A | | |

1471-9 (3/13)

THIS DRAWING IS UNPUBLISHED. RELEASED FOR PUBLICATION
 © COPYRIGHT 2016 TE CONNECTIVITY ALL RIGHTS RESERVED.

| REVISIONS | | | | | |
|-----------|-----|-------------|------|-----|------|
| P | LTR | DESCRIPTION | DATE | DWN | APVD |
| - | | SEE SHEET 1 | - | - | - |
| | | | | | |
| | | | | | |
| | | | | | |

SMART PART NUMBER
 2MM - HSP - S ___ - HT - ___ - ___ - ___

PRODUCT SERIES

2MM AMPMODU 2mm series

GENDER / TYPE

HSP Shrouded headers for positive latch

NUMBER OF ROWS

S Single row


NUMBER OF PINS PER ROW

XX 03 through 16 (enter two digits)

ORIENTATION & TERMINATION

HT Horizontal through hole

PACKAGING

| | |
|----|---|
| TB | Tube without cap |
| TR | Tape and reel without cap |
| BX | Box  |

PLATING


| | |
|---|--------------|
| T | Tin |
| M | 0.38 µm Gold |
| H | 0.76 µm Gold |

TAIL LENGTH (L)

| | |
|----|--------|
| 01 | 2.2 mm |
| 02 | 2.8 mm |

SMART PN EXAMPLES :

1. AMPMODU 2MM, SHROUDED HEADER CENTER LATCH VERSION , SINGLE ROW , 03 POSITION PER ROW , RIGHT ANGLE MOUNT, 2.2MM SOLDER TAIL LENGTH, TIN PLATING, TUBE W/O CAP
2MM-HSP-S03-HT-01-T-TB
2. AMPMODU 2MM, SHROUDED HEADER CENTER LATCH VERSION, SINGLE ROW , 16 POSITION PER ROW , RIGHT ANGLE MOUNT, 2.8MM SOLDER TAIL LENGTH, 0.76 µm GOLD PLATING, BOX PACKAGING
2MM-HSP-S16-HT-02-H-BX

| | | | | |
|--|--|-----------------------------|---|----------------------|
| THIS DRAWING IS A CONTROLLED DOCUMENT. | | DWN RAKESH 7 JUL 2016 |  TE Connectivity | |
| DIMENSIONS: mm | | CHK KARTHIK J K 7 JUL 2016 | | |
| TOLERANCES UNLESS OTHERWISE SPECIFIED: | | APVD PRASHANTH S 7 JUL 2016 | NAME AMPMODU 2mm, SHROUDED MTE HEADER SINGLE ROW, RIGHT ANGLE | |
| 0 PLC ± | | PRODUCT SPEC 108-64040 | SIZE A2 | |
| 1 PLC ±0.1 | | APPLICATION SPEC 114-64040 | CAGE CODE 00779 | DRAWING NO C-2823187 |
| 2 PLC ±0.05 | | WEIGHT | RESTRICTED TO - | |
| 3 PLC ± | | CUSTOMER DRAWING | SCALE 1:1 | SHEET 2 OF 2 |
| 4 PLC ± | | | | REV A |
| ANGLES ±2° | | | | |
| FINISH | | | | |
| MATERIAL SEE NOTES | | | | |
| SEE NOTES | | | | |