

# JANUS REMOTE COMMUNICATIONS

P  
R  
O  
D  
U  
C  
T  
B  
R  
I  
E  
F

## LTE910CFX v1.00 4G Worldwide Embedded CAT1 Cellular Modem

### Description

The Janus line of Common Footprint (CF) Embedded Modems are footprint compatible, embedded cellular devices for use in LTE communication networks globally. They were specifically designed to provide customers with cost effective modules that are easily integrated into new and existing designs, require limited customer certification resources, and are completely interchangeable to allow for maximum network flexibility while removing the worry of product obsolescence.

The LTE910CFX v1.00 Common Footprint (CF) Modem is an LTE Category 1 cellular modem with support for worldwide cellular networks.

Utilizing the Telit LE910C1-WWXD module as its cellular engine, the LTE910CFX v1.00 operates in most 4G LTE bands globally and support fallback to 3G (HSPA+) and 2G network technologies.

North American “end device” certification allows users to implement the LTE910CFX in their devices with no further carrier certification requirements.\*

\* Verizon may require FOTA and data retry demonstration for full certification. FirstNet requires certification in the user end product.



**CellBridge™**  
Global Cellular Modem Solutions

### LTE910CFX v1.00 Features

- Data Rate: LTE: 10D/5U Mbps
- Multi-Band Support
  - 4G (LTE): B1, B2, B3, B4, B5, B7, B8, B9, B12, B13, B14, B18, B19, B20, B25, B26 and B28
  - 3G (HSPA+): B1, B2, B4, B5, B6, B8, and B19
  - 2G: B2, B3, B5, and B8
- TCP/IP stack access via AT commands
- SMS (MO / MT)
- Output power: Class 3 (0.2W, 23 dBm) @ LTE
- Dimensions: 2.5" x 1.4" x 0.325"
- Operational temperature range: -40°C to 85°C
- Internal Switching Regulator:
  - Input Voltage Range: 4.75 to 5.25Vdc (5Vdc nominal)
  - Supply disable via terminal input pin
- Variable logic level (UART/GPIO)
  - Adjustable from 1.8 - 5.0Vdc
  - Defaults to 2.85v
- SIM Card
  - Dual locking SIM card sockets, micro (3FF size) SIM
- Antenna:
  - Cellular and GNSS antenna ports
  - U.FL miniature RF connectors
- GNSS
  - Stand alone GPS, GLONASS, Beidou, Galileo, and QZSS available at AT command interface
  - A-GPS support
  - NMEA data
  - GNSS antenna connection w/active antenna support

*The LTE910CFX v1.00 is pin compatible with the full line of CF Janus Embedded Modem Products.*

### Approvals

FCC Approval: RI7LE910C1-WWXD  
Carrier Approvals:  
PTCRB  
AT&T  
Verizon  
RED - Europe (Pending)

### Applications

Suitable for all IoT Applications

- Fleet Management
- Asset Tracking
- Security Systems
- Telemetry
- Telematics & Telecontrol
- Remote Monitoring Systems
- Remote Meter Reading
- Vending Machines

*Take the complexity out of designing cellular IoT solutions with Janus Embedded Modems.*

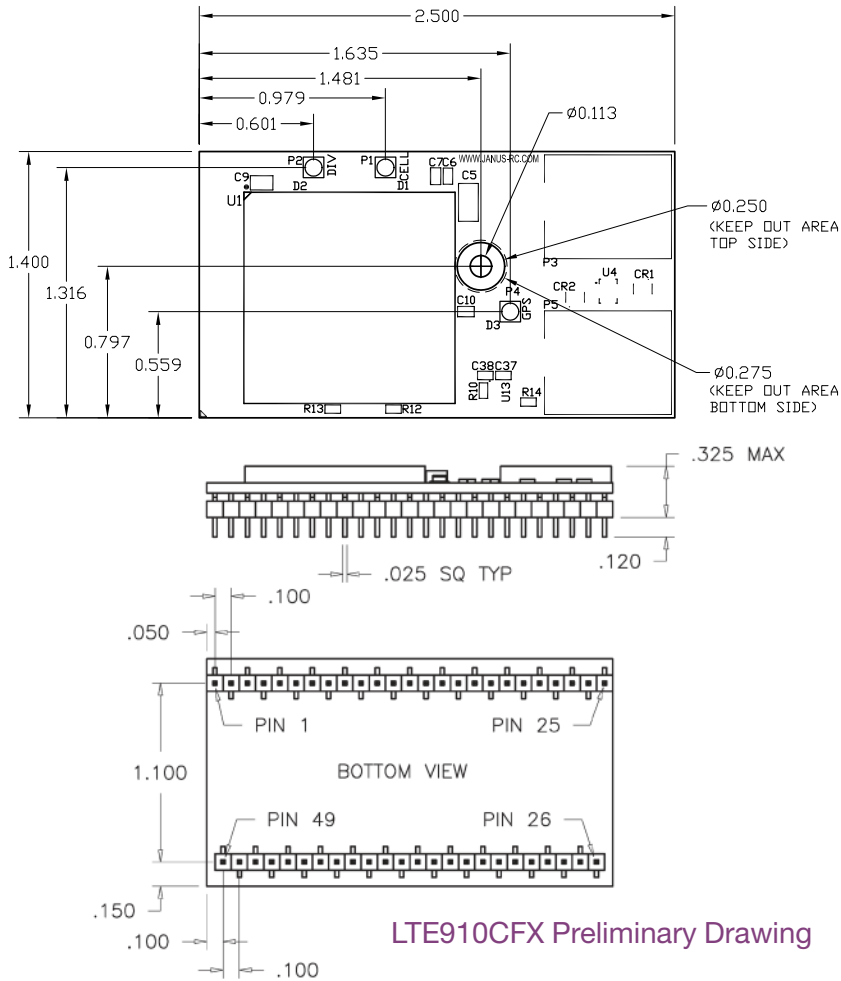


Making machines talk.

2359 Diehl Road  
Aurora, IL 60502  
**630.499.2121**  
info@janus-rc.com  
www.janus-rc.com

Bulletin JA03-PB\_LTE910CFX v1  
Revision 01  
Date 14 March 2023

# LTE910CFX v1.00 CAT 1 CF Cellular Modem Mechanical Drawings



LTE910CFX Preliminary Drawing

## Ordering Information

<b>LTE910CFX</b>	<b>V100</b>	<b>T</b>	<b>A</b>	<b>U</b>	<b>V</b>	<b>N</b>
<b>Cellular Terminal</b> LTE LTE910CFX	<b>Carrier Certified &amp; Version</b> LTE v1.00 = Worldwide	<b>Modem Provider</b> T = Telit	<b>Firmware</b> A = 25.30.4x3 / MOF.403003 <i>Note 2</i>	<b>Connector</b> U for U.FL	<b>Voltage</b> V = Variable	<b>Config Options</b> N = No Config S = SIM <i>Note 1</i>

Example: Part Number – LTE910CFXV100TAUVN = LTE Cellular Cellular Modem Worldwide, Certified; Telit Modem; Standard Firmware with a U.FL Connector with a Variable Voltage with no configuration options.

**Notes:**

1. Config Options: SIM designation is for installation of the SIM
2. Check with Janus for appropriate firmware version.

Contact Sales for Additional Special Order Options: Bill Borton: [bborton@janus-rc.com](mailto:bborton@janus-rc.com) | 630-499-2121

## Revision History

Revision	Revision Date	Note
00	06/21/22	Initial Product Brief
02	03//	Updated Certifications