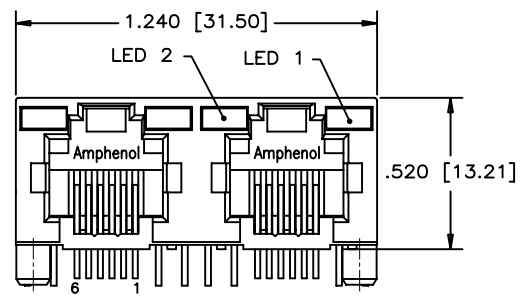
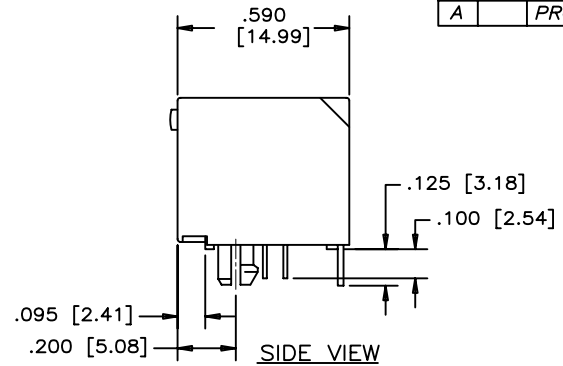


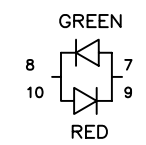
REVISIONS				
SYM	ZONE	ECN, ERN NO.	DATE	APPRD.
A		PROPOSAL		



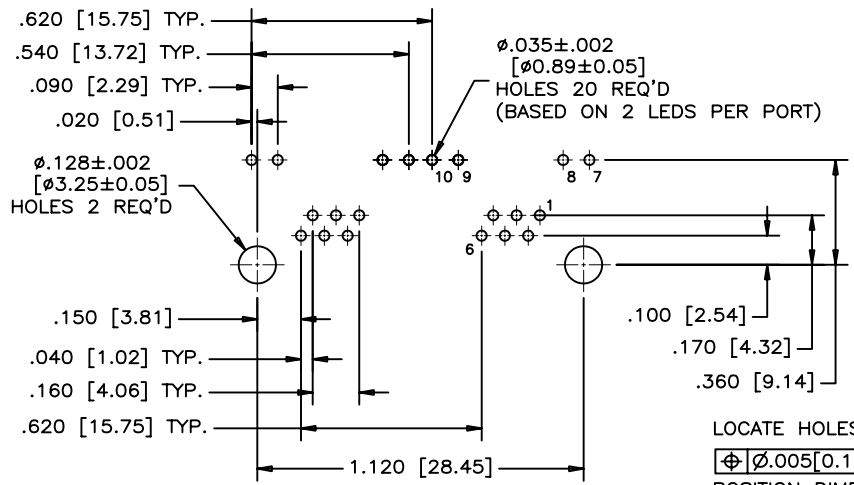
FRONT VIEW



SIDE VIEW

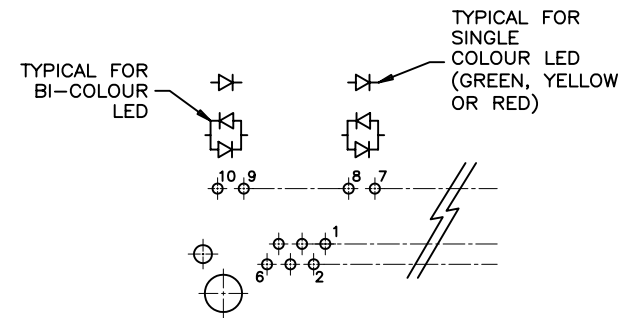


BI-COLOUR LED DETAIL
(YELLOW/GREEN, RED/YELLOW AND GREEN/ORANGE LED'S ARE ALSO AVAILABLE)



RECOMMENDED P.C.B. LAYOUT
(COMPONENT SIDE OF BOARD)

LOCATE HOLES
 $\boxed{\phi \phi .005 [0.13]}$
 POSITION DIMENSIONS ARE BASIC

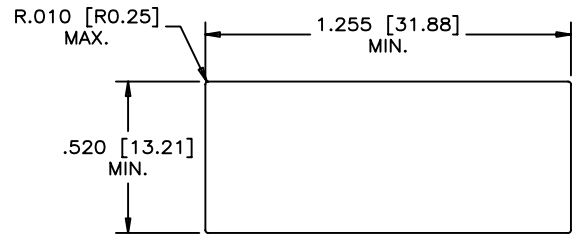


LED SCHEMATIC

MATERIALS:
 PLASTIC HOUSING: ENGINEERING THERMOPLASTIC
 FLAMMABILITY RATING UL 94V-0

CONTACTS: PHOSPHOR BRONZE
 PLATING: 50 μ " [1.27 MICRONS]
 MIN. GOLD ON MATING SURFACES.
 50 μ " [1.27 MICRONS]
 MIN. NICKEL UNDERPLATE
 100 μ " [2.54 MICRONS]
 MIN. MATTE TIN ON CONTACT TAILS.

PART NUMBER: RJHSE-706X-02X
 REFER TO LED OPTIONS DRAWING FOR ORDERING CODES



RECOMMENDED PANEL CUTOUT

THIS DOCUMENT CONTAINS PROPRIETARY INFORMATION AND SUCH INFORMATION MAY NOT BE DISCLOSED TO OTHERS FOR ANY PURPOSE OR USED FOR MANUFACTURING PURPOSES WITHOUT WRITTEN PERMISSION FROM AMPHENOL CANADA CORP.

DRAWN PAUL WANG	DATE 03/03/31	Amphenol Canada Corp.	
DESIGNED			
CHECKED		TITLE RJHSE Series, 2 PORT, HIGH SPEED, MODULAR JACK, 6 POSITION, 6 CONTACTS, UNSHIELDED, WITH LED OPTIONS - RoHS COMPLIANT	
I. E. APPRD.			
Q. A. APPRD.			
DWG. APPRD.			
ENG. REL. NO.		DWG	DRAWING NO.
REF. EAR# 12702		P-RJHSE-706X-02X	
DIMENSIONS ARE IN INCHES [mm]		CODE ID. NO. 03554	REV. A
SCALE	WT. _____	SURF. _____	SHEET 1 OF 1