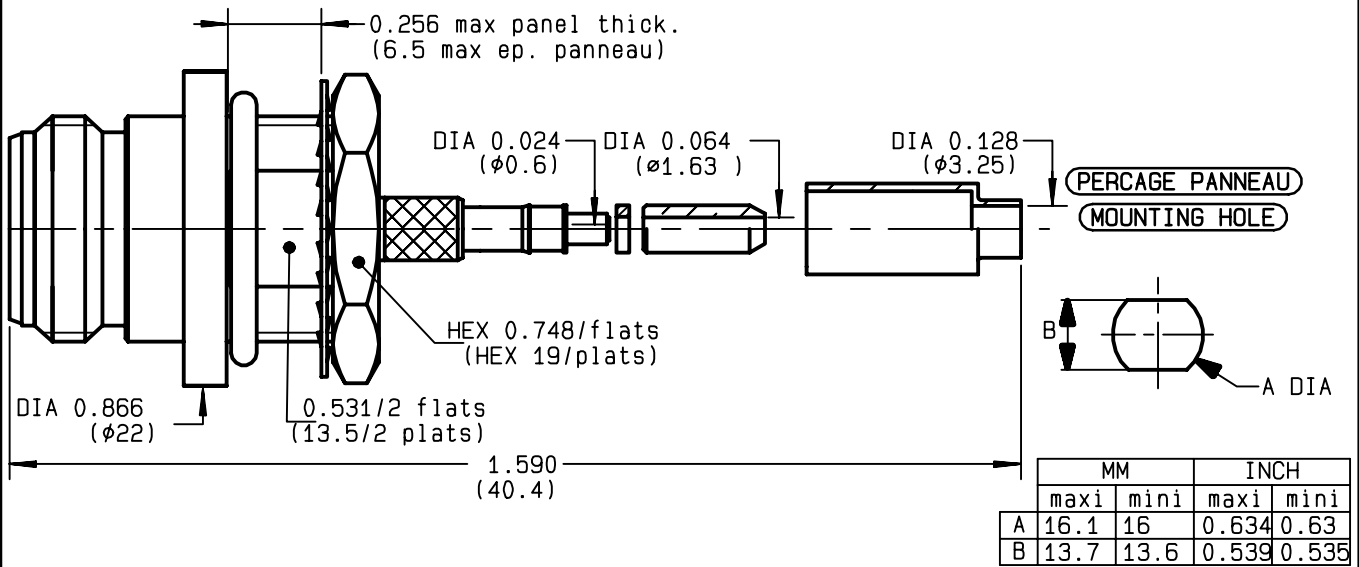


**STRAIGHT BULKHEAD JACK PANEL SEAL
FULL CRIMP-TYPE - CABLE 2.6/50 S+D**

R161.311.200
SERIES N



| | | |
|---------------------------------|-----------------|------------------------|
| NOMINAL IMPEDANCE | 50 | Ω |
| FREQUENCY RANGE | 0-11 | GHz |
| TEMPERATURE RATING | -55/+155 | °C |
| V.S.W.R | 1.40 + | x F(GHz)Maxi |
| RF INSERTION LOSS | 0.048 | √F(GHz) dB Maxi |
| VOLTAGE RATING | 250 | Veff Maxi |
| DIELECTRIC WITHSTANDING VOLTAGE | 750 | Veff Mini |
| INSULATION RESISTANCE | 5000 | MΩMini |
| HERMETIC SEAL | NA | Atm.cm ³ /s |
| LEAKAGE (pressurized only) | IP 67 | |
| MECHANICAL DURABILITY | 500 | Cycles |
| WEIGHT | 36 | gr |
| SPECIFICATION | | |

CABLES : **K02252D**
KX 22A
RD 316
RG 188
RG 316

OTHERS CHARACTERISTICS

| | | |
|----------------------------|------------|-----------|
| CABLE RETENTION | 40 | N Mini |
| CENTER CONTACT RETENTION | | |
| Axial force - mating end | 68 | N Mini |
| Axial force - opposite end | 68 | N Mini |
| Torque | NA | cm.N Mini |
| RECOMMENDED TORQUES | | |
| Mating | NA | cm.N |
| Panel nut | 500 | cm.N |
| Clamp nut | NA | cm.N |

| CONNECTOR PARTS | MATERIALS | FINISH | (all values are given in micrometers) |
|-----------------|------------------|------------------------|---------------------------------------|
| BODY | BRASS | BBR 2 | |
| OUTER CONTACT | BRASS | BBR 2 | |
| CENTER CONTACT | BERYLLIUM COPPER | GOLD 0.5 OVER NICKEL 2 | |
| INSULATOR | PTFE | - | |
| GASKET | SILICONE RUBBER | - | |
| OTHERS PIECES | BRASS | BBR 2 | |

| | | |
|----------------|-------------------|------------------|
| ISSUE | CREATION DATE | FILE PART-NUMBER |
| 0012B00 | 05/03/1997 | EPC 96-07 |



RADIALL®

GONZALES

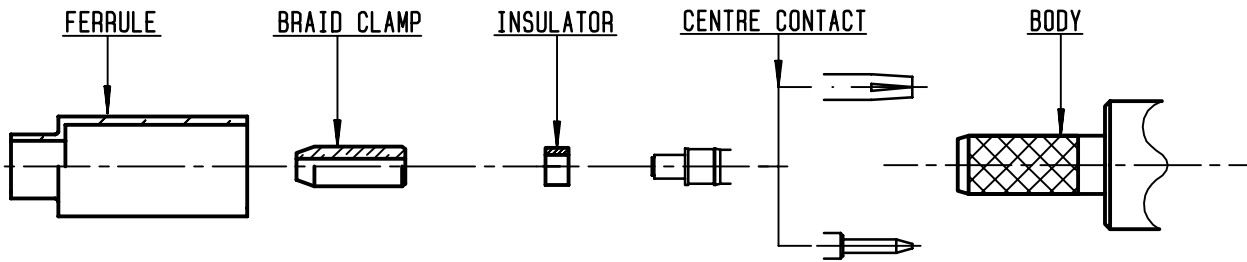
The information given here is subject to change without notice.
Design changes may be in order to improve the product .

Connect to the future



R161.311.200

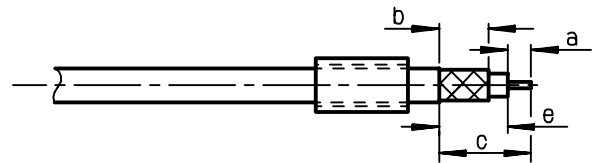
ISSUE **0012B00** SERIES **N**



①

Slide onto the cable the ferrule
Strip the cable .

-
-



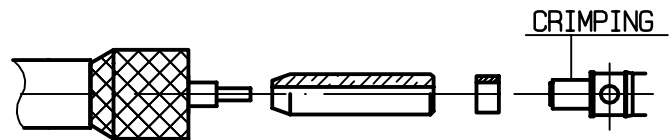
| Stripping | a | b | c | d | e |
|-----------|-------|-------|-------|---|-------|
| inch | 0.177 | 0.315 | 0.551 | 0 | 0.374 |
| mm | 4.5 | 8 | 14 | | 9.5 |

②

Fan the braid .
Slide the braid clamp and insulator
between the dielectrique and the braid .
Slide on centre contact until it
bottoms against cable dielectrique .

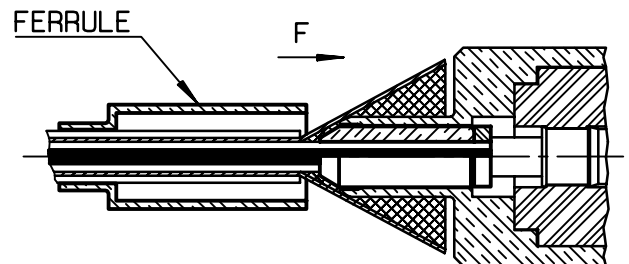
Crimp centre contact .

Crimping tool : R282 223 000 (Hex. : 0.068)
or crimping tool R282 293 000 (M22520/5-01)
+ dies R282 235 011 (M22520/5-11)



③

Slide cable dielectric into the body
while gently grinding the braid over the knurl
Push until the dielectric clicks into
position .
Slide ferrule over braid in direction F .



④

Crimp the ferrule with crimping tool
R 282 223 000 (Hex. : 0.213) or
crimping tool R282 293 000 (M22520/5-01)
+ dies R282 235 011 (M22520/5-11)
Cut the excess of braid .

-
-

