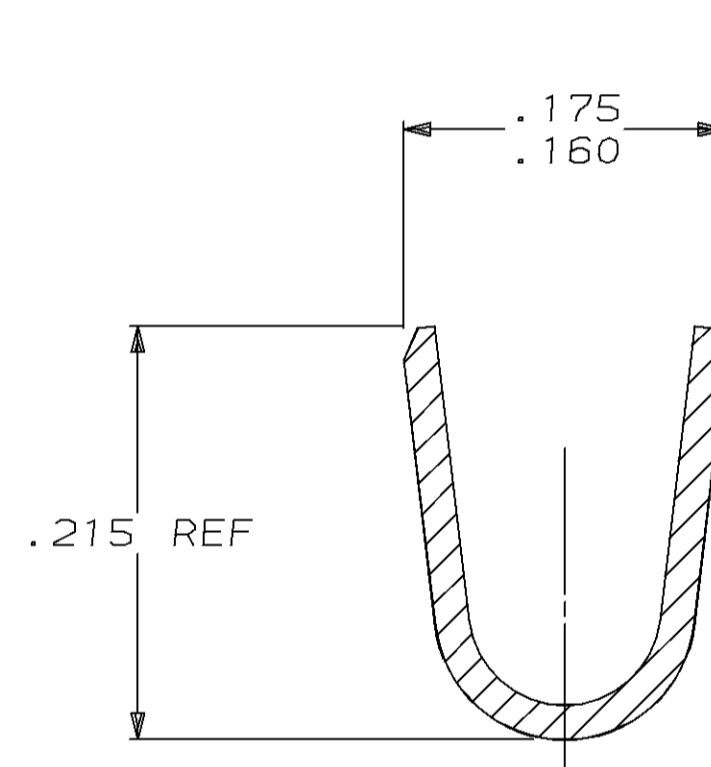
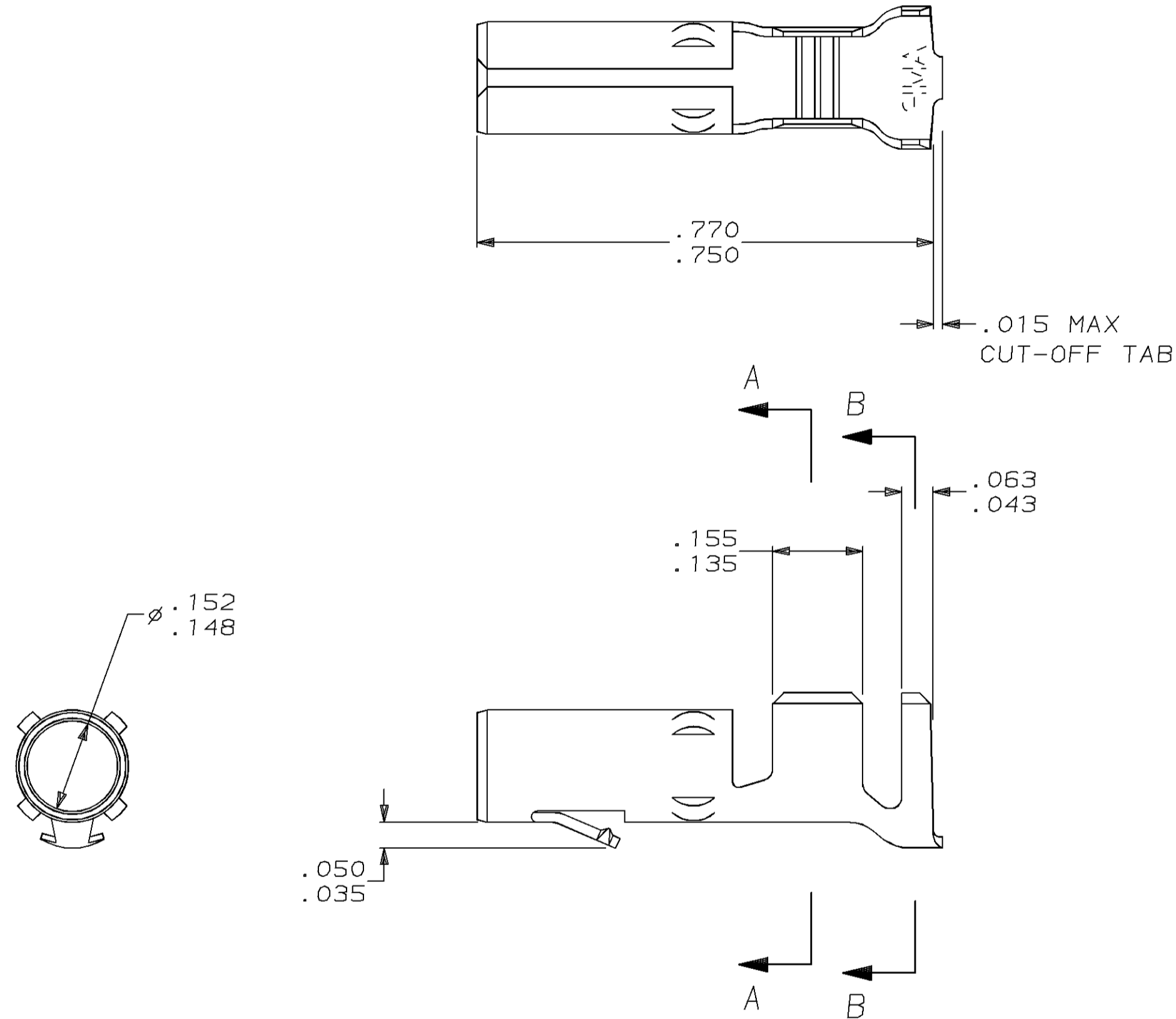


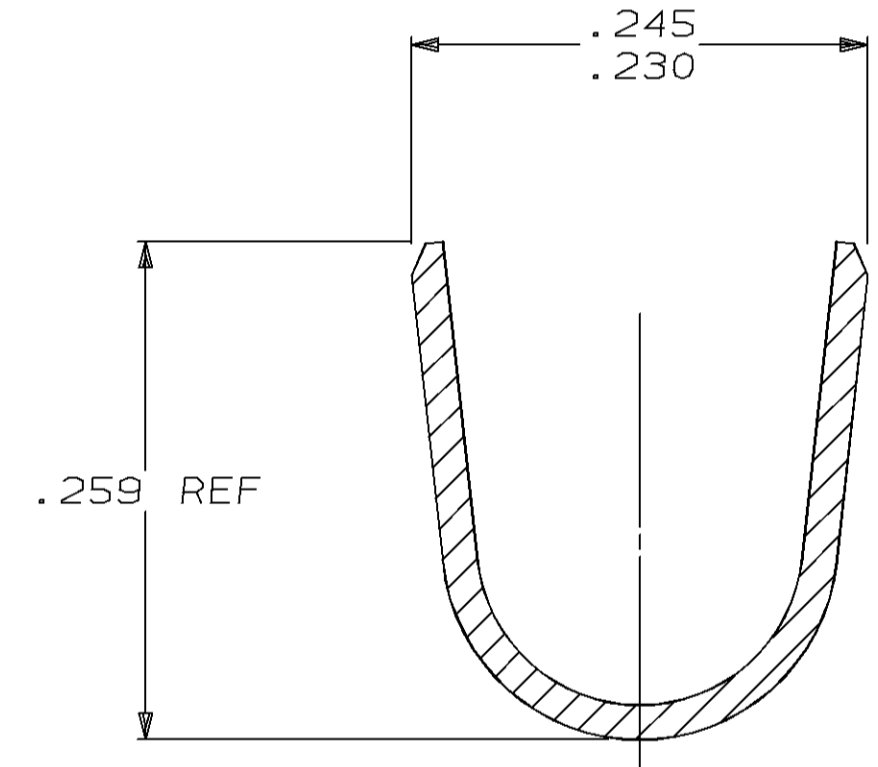
THIS DRAWING IS UNPUBLISHED. RELEASED FOR PUBLICATION  
 © COPYRIGHT 19 BY AMP INCORPORATED. ALL RIGHTS RESERVED.

LOC	DIST	REVISIONS			
P	LTR	DESCRIPTION	DATE	DWN	APVD
CM	53				
D		REACT & REDWN PER EC 0730-0171-96	6-25-96	BL	RS

1. WIRE RANGE: 12-10 (3-6mm<sup>2</sup>) AWG  
 INSULATION RANGE: .185 MAX.



SECTION A-A  
SCALE 10:1

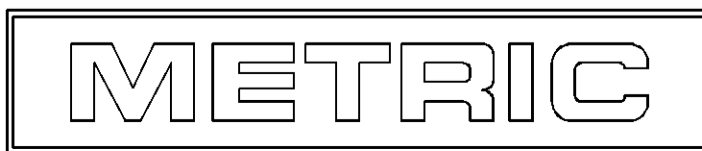


SECTION B-B  
SCALE 10:1

TIN	.018 BRASS	61252-1
FINISH	MATERIAL	PART NO

IN	MM	IN	MM	IN	MM	IN	MM
.050	1.27	.156	3.96	.245	6.22		
.043	1.09	.155	3.94	.230	5.84		
.035	0.89	.152	3.86	.215	5.46		
.018	0.46	.148	3.76	.185	4.70	.770	19.56
.015	0.38	.135	3.43	.175	4.45	.750	19.05
.005	0.13	.063	1.60	.160	4.06	.259	6.58
IN	MM	IN	MM	IN	MM	IN	MM

CONVERSION TABLE



THIS DRAWING IS A CONTROLLED DOCUMENT.

DIMENSIONS: INCHES	TOLERANCES UNLESS OTHERWISE SPECIFIED:	DWN B. LEWIS 6-25-96	AMP Incorporated Harrisburg, PA 17105-3608
	0 PLC ±	CHK R. SWING 6-25-96	
	1 PLC ±	APVD C. MARTIN 6-25-96	
	2 PLC ±	NAME	
	3 PLC ±.005	PRODUCT SPEC	
4 PLC ±	APPLICATION SPEC	SOCKET, LOOSE PIECE, .156 MATE-N-LOK™	
MATERIAL BRASS	FINISH PRE-TIN	SIZE A2	CAGE CODE 00779
CUSTOMER DRAWING		DRAWING NO C-61252	SCALE 5:1 SHEET 1 OF 1 REV D