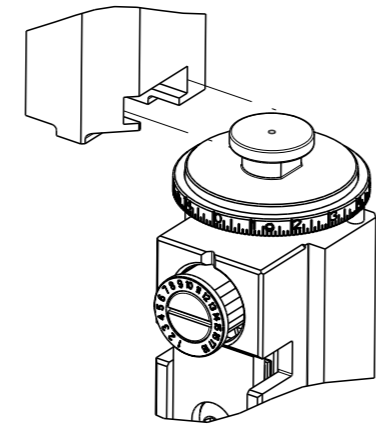


| PART NUMBER | REVISION | DESCRIPTION                      | FEED TYPE  |
|-------------|----------|----------------------------------|------------|
| 2266522-1   | B        | FINE CRIMP HEIGHT ADJUST         | MECHANICAL |
| 2266522-2   | B        | FINE CRIMP HEIGHT ADJUST         | PNEUMATIC  |
| 7-2266522-1 | B        | MECHANICAL AND CRIMP TOOLING KIT | MECHANICAL |
| 7-2266522-2 | B        | PNEUMATIC AND CRIMP TOOLING KIT  | PNEUMATIC  |
| 7-2266522-7 | A        | CRIMP TOOLING KIT                | -          |

ATLANTIC VERSION TERMINATOR INTERFACE ADAPTER

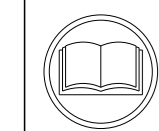


| APPLICATOR DATA |                |      |
|-----------------|----------------|------|
| CRIMP           | SIZE           | TYPE |
| WIRE            | 1.95 mm [.077] | F    |
| INSUL           | 2.70 mm [.106] | F    |

APPLICATOR INSTRUCTIONS 408-35042

| TERMINAL DATA: LEAR TERMINAL        |                  | LEAR CRIMP SPECIFICATION  |               |
|-------------------------------------|------------------|---------------------------|---------------|
| TERMINAL NAME: MDK4 CONTACT 2.8X0.8 |                  |                           |               |
| WIRE STRIP LENGTH                   |                  | INSULATION DIAMETER RANGE |               |
| 4.00-4.50 mm [.157-.177 IN]         |                  | 1.73mm [.068 IN] MAX      |               |
| TERMINAL APPLICATION SPECIFICATION  | LEAR 26353 Rev 6 |                           |               |
| TERMINALS APPLIED                   |                  |                           |               |
| TE TERMINAL                         | LEAR TERMINAL    | TE TERMINAL               | LEAR TERMINAL |
| 286972-1                            | 26353.201.178    |                           |               |

| WIRE SIZE | CRIMP HEIGHT mm [INCH]     | CRIMP HEIGHT REFERENCE SETTING |
|-----------|----------------------------|--------------------------------|
| 1.00mm2   | 1.25+/-0.05 [.049+/-0.002] | 5.5                            |
| 0.75mm2   | 1.20+/-0.05 [.047+/-0.002] | 5.9                            |
| 0.50mm2   | 1.15+/-0.05 [.045+/-0.002] | 6.5                            |



- 1. RECOMMENDED SPARE PARTS
- 2. REFER TO SUPPLIED INSTRUCTION SHEET FOR CLEANING, LUBRICATION AND STORAGE OF APPLICATOR.
- 3. APPLY PART NUMBER 2-23419-6 LOCTITE TO THREADS OF ITEM 242.
- 4. CRIMP HEIGHT REFERENCE SETTING WAS THE SETTING USED WHEN THE APPLICATOR WAS QUALIFIED AT THE FACTORY. ADJUSTMENT MAY BE NECESSARY WHEN RUNNING APPLICATOR IN THE FIELD.
- 5. UNLESS SPECIFIED OTHERWISE TORQUE VALUES SHALL BE USED PER DOCUMENT, 101-35000.

**\*WARNING**  
ON INSTALLATION, SET WIRE DISC TO CRIMP HEIGHT REFERENCE SETTING FOR LARGEST WIRE SIZE. CRIMP HEIGHT REFERENCE SETTINGS GREATER THAN THE VALUE SHOWN MAY CAUSE DAMAGE TO THE CRIMP TOOLING, REFER TO THE INSTRUCTION SHEET FOR PROPER SETUP AND ADJUSTMENTS.

ATLANTIC VERSION  
Shown on sheets 1 of 4 & 2 of 4  
(Pacific version shown on sheets 3 of 4 & 4 of 4)

| LOC | DIST | REVISIONS |     |               |           |     |      |
|-----|------|-----------|-----|---------------|-----------|-----|------|
| A   | 66   | P         | LY# | DESCRIPTION   | DATE      | OWN | APVD |
|     |      | A         |     | RELEASED      | 17DEC2014 | MR  | GB   |
|     |      | B         |     | ECR-20-012539 | 07SEP2020 | FJ  | TE   |

|   |     |     |     |     |             |                                     |                       |   |
|---|-----|-----|-----|-----|-------------|-------------------------------------|-----------------------|---|
| - | 1   | -   | 1   | -   | 2119641-1   | FEED CAM, AIR FEED                  | 248                   |   |
| - | 1   | 1   | 1   | 1   | 2119082-5   | CAM, SNAIL, INSULATION ADJUSTMENT   | 244                   |   |
| - | 1   | 1   | 1   | 1   | 2079764-1   | WASHER, WAVE SPRING, CREST-TO-CREST | 243                   |   |
| - | 1   | 1   | 1   | 1   | 2119083-1   | RETAINER, INSULATION DIAL           | 242                   |   |
| - | 1   | 1   | 1   | 1   | 7-18023-7   | SCR, SKT HD CAP M3 X 4.0            | 241                   |   |
| - | -   | 1   | -   | 1   | 2119580-1   | MECHANICAL FEED ASSEMBLY            | 239                   |   |
| - | 1   | -   | 1   | -   | 2844940-1   | AIR FEED MODULE                     | 238                   |   |
| - | REF | REF | REF | REF | 994970-2    | COUNTER, MAGNETIC                   | 164                   |   |
| - | 1   | 1   | 1   | 1   | 2844908-1   | SCREW, LOCKING                      | 99                    |   |
| - | 1   | 1   | 1   | 1   | 2844907-1   | POST, LOCKING                       | 98                    |   |
| - | 1   | 1   | 1   | 1   | 455888-6    | SPACER, CRIMPER                     | 82                    |   |
| - | 1   | 1   | 1   | 1   | 1803607-3   | DOCUMENTATION PACKAGE               | 71                    |   |
| - | 1   | 1   | 1   | 1   | 2119740-1   | TAG, IDENTIFICATION                 | 67                    |   |
| - | 2   | 2   | 2   | 2   | 2168078-1   | SCREW, DRIVE, RH, RoHS, 2 x .188    | 66                    |   |
| - | 1   | 1   | 1   | 1   | 2168083-2   | SCR, SKT HD CAP, RoHS, M4 X 8.0     | 60                    |   |
| - | 1   | 1   | 1   | 1   | 5-18022-5   | SCR, HEX HD CAP, M4 X 6.0           | 59                    |   |
| - | 1   | 1   | 1   | 1   | 1338685-1   | PAWL, FEED                          | 56                    |   |
| - | 4   | 4   | 4   | 4   | 2168083-3   | SCR, SKT HD CAP, RoHS, M4 X 12.0    | 54                    |   |
| - | 2   | 2   | 2   | 2   | 1-2168083-0 | SCR, SKT HD CAP, RoHS, M4 X 10      | 53                    |   |
| - | 1   | 1   | 1   | 1   | 5018030-1   | NUT, HEX, REG, RoHS, M3             | 52                    |   |
| - | 1   | 1   | 1   | 1   | 811242-5    | BUMPER, HOLD DOWN                   | 51                    |   |
| - | 1   | 1   | 1   | 1   | 690753-2    | SPACER, TONKER                      | 50                    |   |
| - | 1   | 2   | 1   | 2   | 18023-9     | SCR, SKT HD CAP M4 X 6.0            | 49                    |   |
| - | -   | 1   | -   | 1   | 2119652-1   | FEED CAM, PRE FEED                  | 48                    |   |
| - | -   | 1   | -   | 1   | 2119653-1   | FEED CAM, POST FEED                 | 47                    |   |
| - | 1   | 1   | 1   | 1   | 1803583-9   | APPLICATOR BASIC ASSEMBLY, SF       | 46                    |   |
| - | 1   | 1   | 1   | 1   | 1803515-1   | RAM ASSEMBLY, SF ATLANTIC           | 44                    |   |
| - | 1   | 1   | 1   | 1   | 1803602-1   | SCR, BHSC, RoHS (M8 X 25)           | 41                    |   |
| - | 1   | 1   | 1   | 1   | 3-1752356-3 | SUPPORT, TERMINAL                   | 34                    |   |
| - | 2   | 2   | 2   | 2   | 2079383-5   | SCR, BHSC, RoHS (M4 X 20)           | 33                    |   |
| - | 2   | 2   | 2   | 2   | 3-2844962-0 | SPACER, CYLINDRICAL, STRIP GUIDE    | 30                    |   |
| - | 1   | 1   | 1   | 1   | 2844992-4   | ASSEMBLY, STRIP GUIDE               | 29                    |   |
| - | 1   | 1   | 1   | 1   | 455888-3    | SPACER, CRIMPER                     | 28                    |   |
| - | 1   | 1   | 1   | 1   | 240792-1    | DRAG, TERMINAL                      | 25                    |   |
| - | 1   | 1   | 1   | 1   | 1320928-2   | STRIP GUIDE                         | 24                    |   |
| - | 1   | 1   | 1   | 1   | 2168083-2   | SCR, SKT HD CAP, RoHS, M4 X 8.0     | 21                    |   |
| - | 2   | 2   | 2   | 2   | 1-18028-2   | WASHER, FLAT, REG M4                | 20                    |   |
| - | 1   | 1   | 1   | 1   | 2119533-1   | STRIPPER, SIDE FEED                 | 19                    |   |
| - | 1   | 1   | 1   | 1   | 2119806-1   | INSERT, SHEAR                       | 13                    |   |
| - | 1   | 1   | 1   | 1   | 3-22280-3   | SPRING, COMPRESSION                 | 12                    |   |
| - | 1   | 1   | 1   | 1   | 1-356885-4  | STOP, SHEAR                         | 11                    |   |
| - | 1   | 1   | 1   | 1   | 2119805-1   | SHEAR HOLDER, FRONT                 | 10                    |   |
| - | 1   | 1   | 1   | 1   | 1803095-6   | FLOATING SHEAR, FRONT               | 9                     |   |
| - | 1   | 2   | 2   | 1   | 1           | 6-1803054-7                         | ANVIL, COMBINATION    | 8 |
| - | -   | -   | -   | -   | -           | -                                   | 7                     |   |
| - | -   | -   | -   | -   | -           | -                                   | 6                     |   |
| - | 1   | 1   | 1   | 1   | 2119757-8   | DEPRESSOR, SHEAR                    | 5                     |   |
| - | 1   | 1   | 1   | 1   | 238011-7    | BLOCK, CRIMPER SPACER               | 4                     |   |
| - | 1   | 2   | 2   | 1   | 1           | 3-1803017-9                         | CRIMPER, INSULATION F | 3 |
| - | 1   | 1   | 1   | 1   | 455888-6    | SPACER, CRIMPER                     | 2                     |   |
| - | 1   | 2   | 2   | 1   | 1           | 7-1633730-6                         | CRIMPER, WIRE         | 1 |
| - | 77  | 72  | 71  | -2  | -1          | PART NO                             | ITEM NO               |   |

| DIMENSIONS: |         | TOLERANCES UNLESS OTHERWISE SPECIFIED: |         | APPROVED: |         | DATE:    |           |
|-------------|---------|--|---------|-----------|---------|----------|-----------|
| mm          | 0 PLC ± | 1 PLC ±                                | 2 PLC ± | 3 PLC ±   | 4 PLC ± | OWN      | DATE      |
|             | ANGLES  | FINISH                                 |         |           |         | H. HUANG | 10NOV2014 |
|             |         |  |         |           |         | L. ZHANG | 10NOV2014 |
|             |         |  |         |           |         | J. GUO   | 10NOV2014 |
| MATERIAL:   |         |  |         | WEIGHT:   |         | SCALE:   |           |
| -           |         |  |         | -         |         | 1:2      |           |



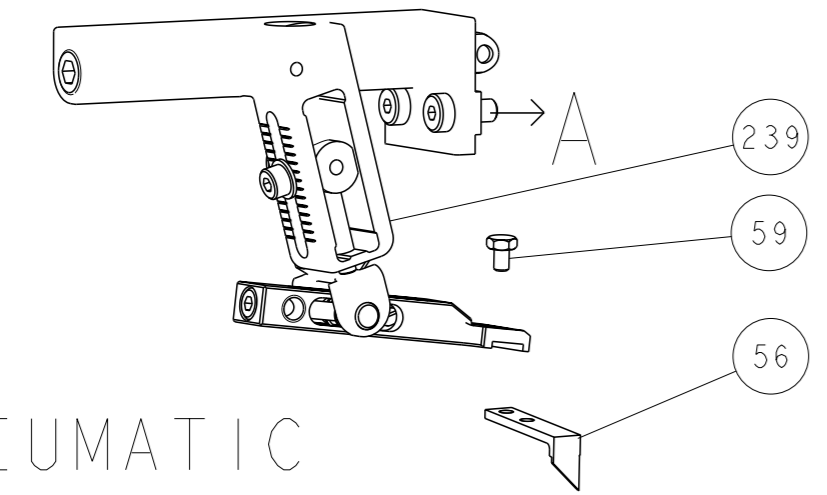
Ocean Side Feed Applicator

SIZE: A1 CAGE CODE: 00779 DRAWING NO: 2266522

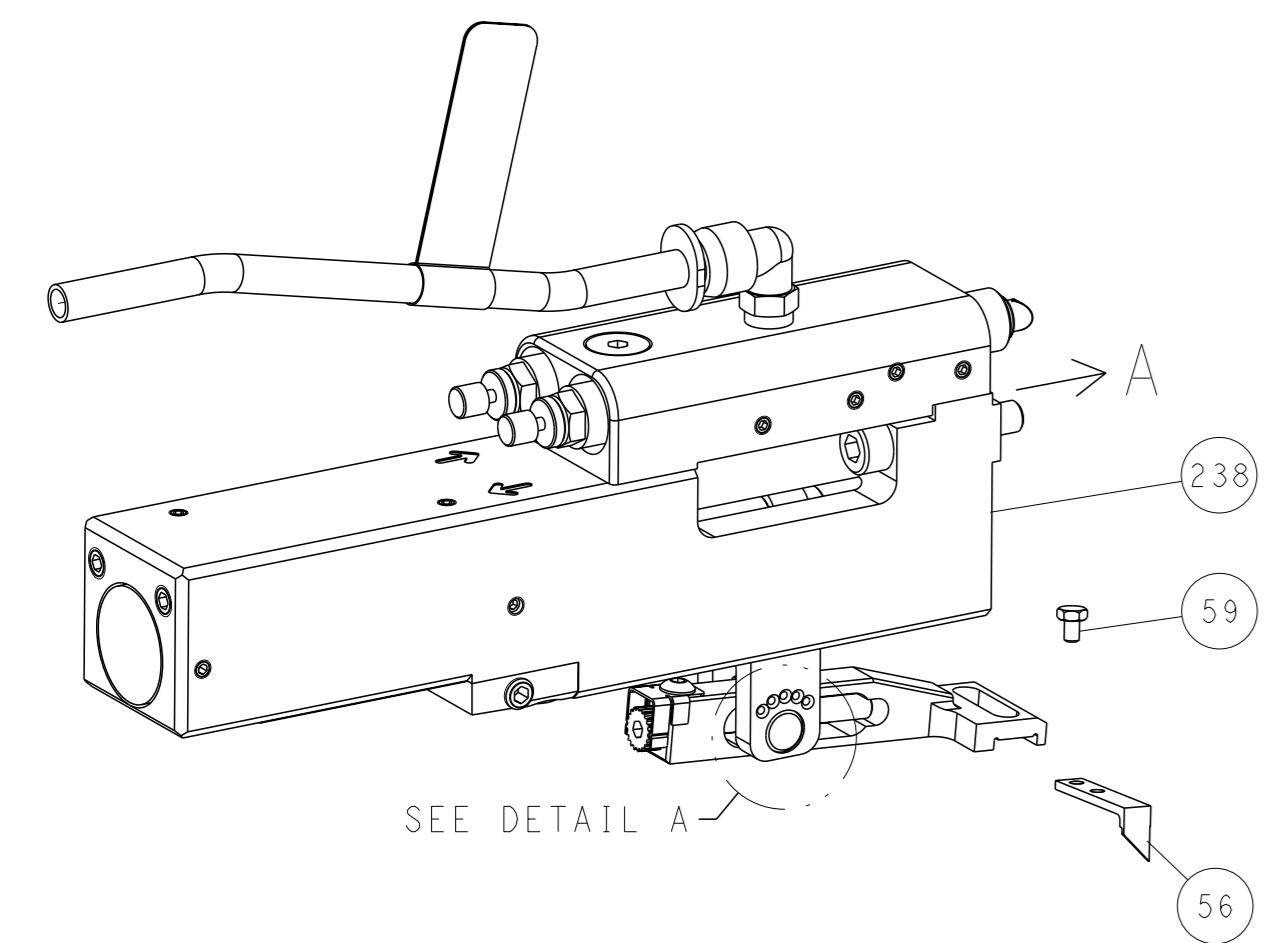
Customer Accessible Production Drawing SHEET 1 OF 4 REV B

| LOC |    | DIST |     | REVISIONS   |      |     |      |
|-----|----|------|-----|-------------|------|-----|------|
| A   | 66 | P    | LYR | DESCRIPTION | DATE | OWN | APVD |
|     |    | -    |     | SEE SHEET 1 | -    | -   | -    |

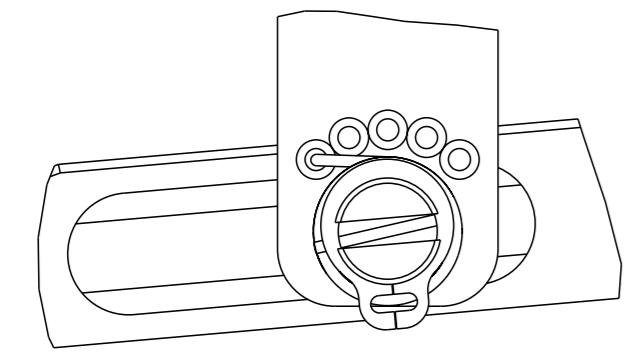
# FEED TYPE MECHANICAL



## PNEUMATIC

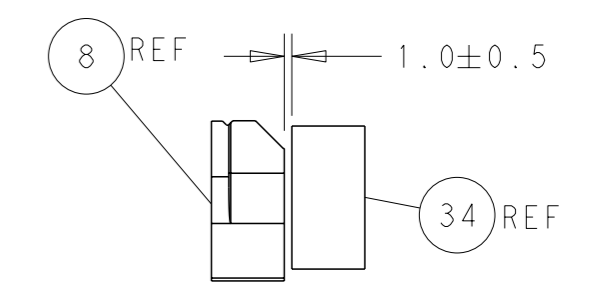
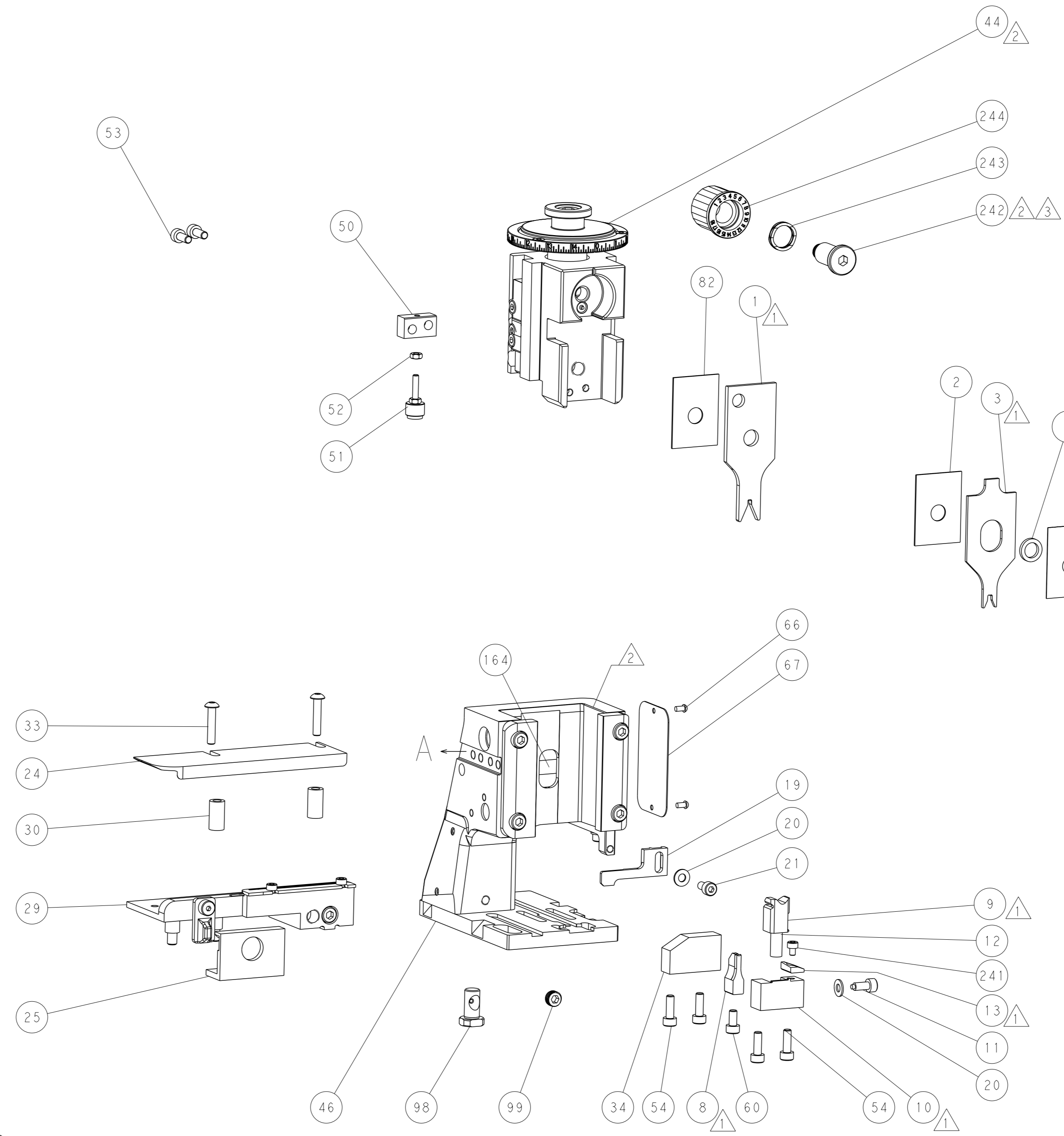
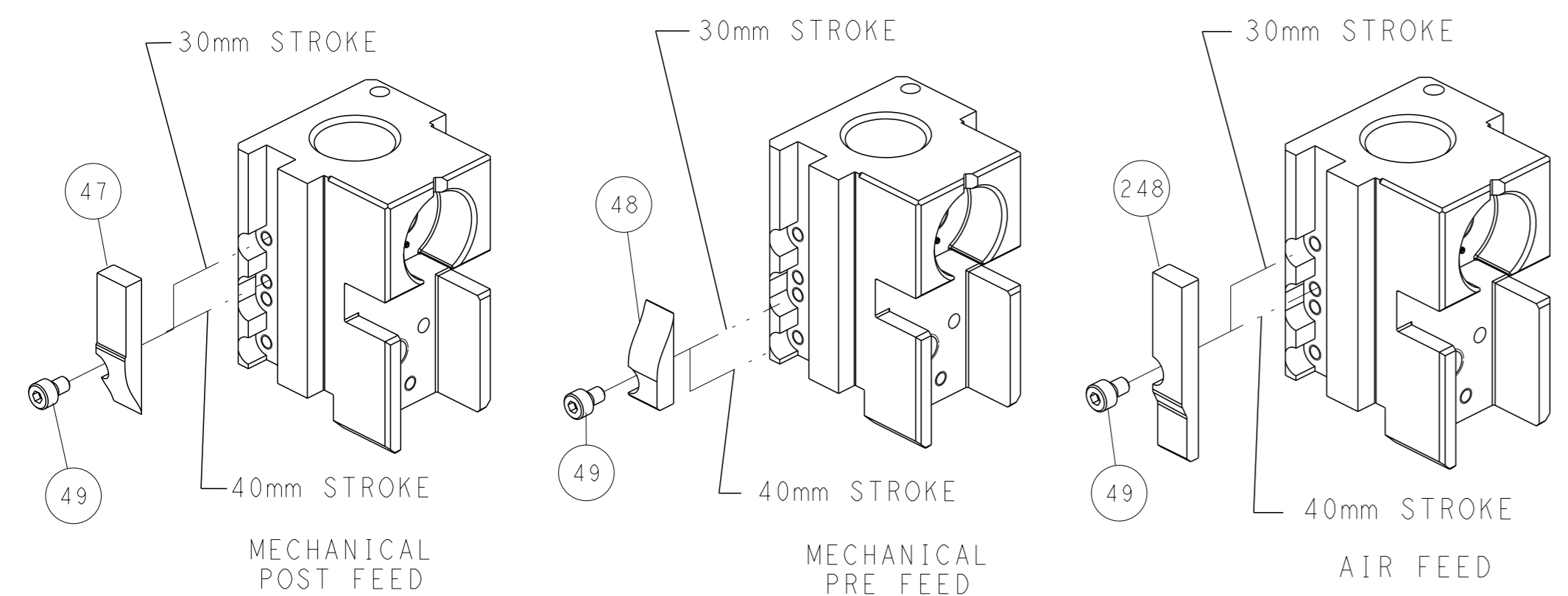


## FEED SPRING SETTING POSITION (SHOWN FROM REAR SIDE)

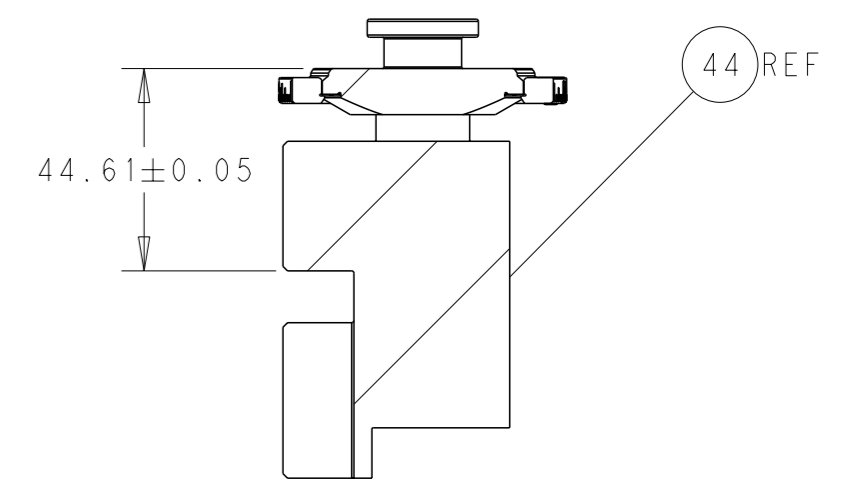


DETAIL A

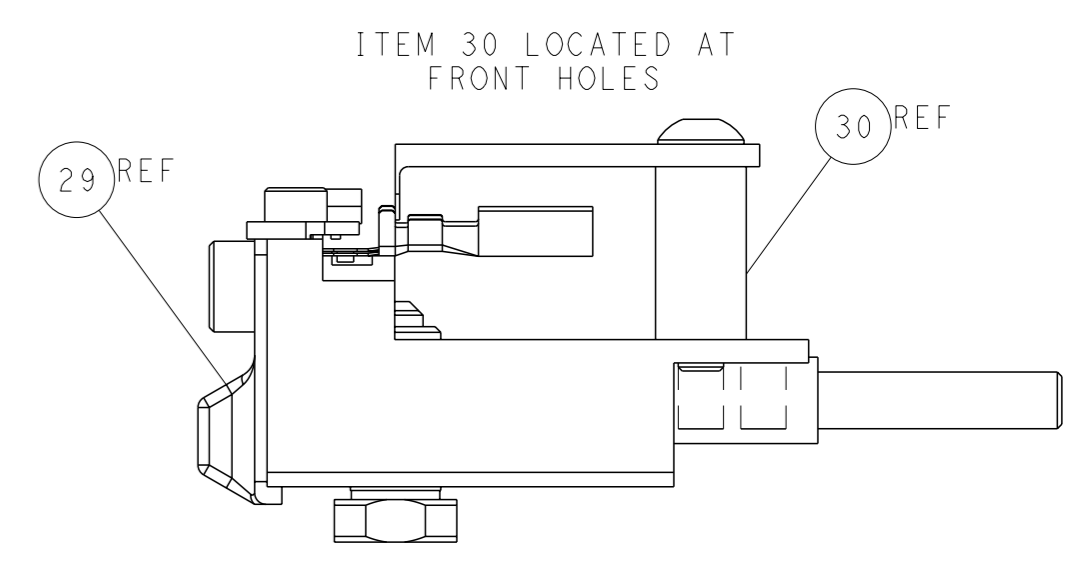
## CAM POSITIONS



TERMINAL SUPPORT LOCATION



HOLDDOWN SET-UP



FEED TRACK POSITION GUIDE BY INSULATION BARREL

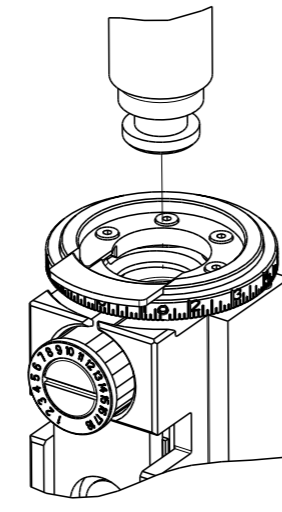
**ATLANTIC VERSION**  
 Shown on sheets 1 of 4 & 2 of 4  
 (Pacific version shown on sheets 3 of 4 & 4 of 4)

|   |  |   |   |
|---|--|---|---|
| <small>THIS DRAWING IS A CONTROLLED DOCUMENT FOR TYCO ELECTRONICS CORPORATION. IT IS SUBJECT TO CHANGE AND THE CONTROL AND RESTRICTION DESIGNATION SHOULD BE CONTACTED FOR THE LATEST REVISION.</small> |  | DWN: H. HUANG 10NOV2014<br>CHK: L. ZHANG 10NOV2014<br>APVD: J. GUO 10NOV2014              | TE Connectivity<br>Harrisburg, PA 17105-3608              |
| DIMENSIONS: mm<br>TOLERANCES UNLESS OTHERWISE SPECIFIED:<br>0 PLC ±<br>1 PLC ±<br>2 PLC ±<br>3 PLC ±<br>4 PLC ±<br>ANGLES FINISH ±  |  | NAME: Ocean Side Feed Applicator<br>SIZE: A1<br>CAGE CODE: 00779<br>DRAWING NO: C=2266522 | RESTRICTED TO: -<br>SCALE: 1:2<br>SHEET: 2 of 4<br>REV: B |
| MATERIAL: -<br>FINISH: -  |  | WEIGHT: -<br>Customer Accessible Production Drawing                                       | SHEETS 3 & 4 ARE NOT REQUIRED FOR ATLANTIC VERSION        |

|   |                          |
|---|--------------------------|
| THIS DRAWING IS UNPUBLISHED.                          | RELEASED FOR PUBLICATION |
| BY TFCO ELECTRONICS CORPORATION. ALL RIGHTS RESERVED. | 20                       |
| COPYRIGHT 20  |                          |

| PART NUMBER | REVISION | DESCRIPTION              | FEED TYPE  |
|-------------|----------|--------------------------|------------|
| 2-2266522-1 | B        | FINE CRIMP HEIGHT ADJUST | MECHANICAL |
| 2-2266522-2 | B        | FINE CRIMP HEIGHT ADJUST | PNEUMATIC  |
| 7-2266522-7 | A        | CRIMP TOOLING KIT        | -          |

PACIFIC VERSION TERMINATOR  
INTERFACE ADAPTER



| APPLICATOR DATA |                |      |
|-----------------|----------------|------|
| CRIMP           | SIZE           | TYPE |
| WIRE            | 1.95 mm [.077] | F    |
| INSUL           | 2.70 mm [.106] | F    |

APPLICATOR INSTRUCTIONS  
408-35042

| TERMINAL DATA: LEAR TERMINAL        |               | LEAR CRIMP SPECIFICATION  |               |
|-------------------------------------|---------------|---------------------------|---------------|
| TERMINAL NAME: MDK4 CONTACT 2.8X0.8 |               |                           |               |
| WIRE STRIP LENGTH                   |               | INSULATION DIAMETER RANGE |               |
| 4.00-4.50 mm [.157-.177 IN]         |               | 1.73mm [.068 IN] MAX      |               |
| TERMINAL APPLICATION SPECIFICATION  |               |                           |               |
| LEAR 26353 Rev 6                    |               |                           |               |
| TERMINALS APPLIED                   |               |                           |               |
| TE TERMINAL                         | LEAR TERMINAL | TE TERMINAL               | LEAR TERMINAL |
| 286972-1                            | 26353.201.178 |                           |               |

| WIRE SIZE | CRIMP HEIGHT mm [INCH]     | CRIMP HEIGHT REFERENCE SETTING |
|-----------|----------------------------|--------------------------------|
| 1.00mm2   | 1.25+/-0.05 [.049+/-0.002] | 5.5                            |
| 0.75mm2   | 1.20+/-0.05 [.047+/-0.002] | 5.9                            |
| 0.50mm2   | 1.15+/-0.05 [.045+/-0.002] | 6.5                            |



- RECOMMENDED SPARE PARTS
- REFER TO SUPPLIED INSTRUCTION SHEET FOR CLEANING, LUBRICATION AND STORAGE OF APPLICATOR.
- APPLY PART NUMBER 2-23419-6 LOCTITE TO THREADS OF ITEM 242.
- CRIMP HEIGHT REFERENCE SETTING WAS THE SETTING USED WHEN THE APPLICATOR WAS QUALIFIED AT THE FACTORY. ADJUSTMENT MAY BE NECESSARY WHEN RUNNING APPLICATOR IN THE FIELD.
- UNLESS SPECIFIED OTHERWISE TORQUE VALUES SHALL BE USED PER DOCUMENT, 101-35000.

**\*WARNING**  
ON INSTALLATION, SET WIRE DISC TO CRIMP HEIGHT REFERENCE SETTING FOR LARGEST WIRE SIZE. CRIMP HEIGHT REFERENCE SETTINGS GREATER THAN THE VALUE SHOWN MAY CAUSE DAMAGE TO THE CRIMP TOOLING, REFER TO THE INSTRUCTION SHEET FOR PROPER SETUP AND ADJUSTMENTS.

PACIFIC VERSION  
Shown on sheets 3 of 4 & 4 of 4  
(Atlantic version shown on sheets 1 of 4 & 2 of 4)

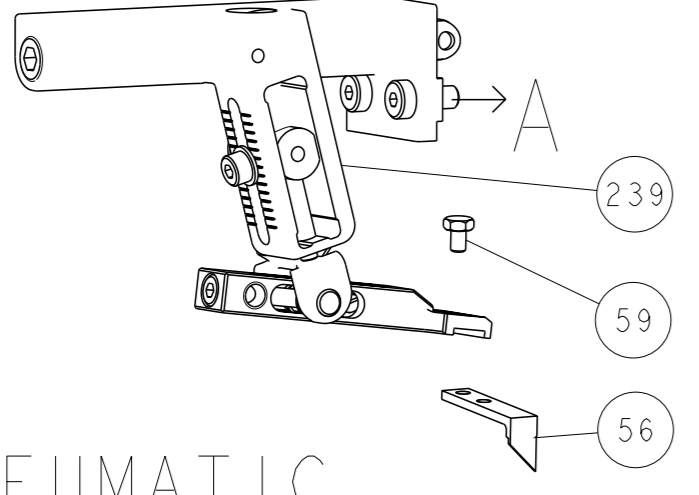
| LOC | DIST | REV | DESCRIPTION | DATE | OWN | APVD |
|-----|------|-----|-------------|------|-----|------|
| A   | 66   | -   | SEE SHEET 1 | -    | -   | -    |

|   |     |     |             |                                     |         |
|---|-----|-----|-------------|-------------------------------------|---------|
| - | 1   | 1   | 2119082-5   | CAM, SNAIL, INSULATION ADJUSTMENT   | 244     |
| - | 1   | 1   | 2079764-1   | WASHER, WAVE SPRING, CREST-TO-CREST | 243     |
| - | 1   | 1   | 2119083-1   | RETAINER, INSULATION DIAL           | 242     |
| - | 1   | 1   | 7-18023-7   | SCR, SKT HD CAP M3 X 4.0            | 241     |
| - | -   | -   | 2119580-1   | MECHANICAL FEED ASSEMBLY            | 239     |
| - | 1   | -   | 2844940-1   | AIR FEED MODULE                     | 238     |
| - | REF | REF | 994970-2    | COUNTER, MAGNETIC                   | 164     |
| - | 1   | -   | 2119641-2   | FEED CAM, AIR FEED                  | 151     |
| - | 1   | 1   | 2168083-8   | SCR, SKT HD CAP, RoHS, M4 X 16      | 144     |
| - | 4   | 4   | 2168083-9   | SCR, SKT HD CAP, RoHS, M4 X 20      | 143     |
| - | -   | 1   | 2119653-2   | FEED CAM, POST FEED                 | 142     |
| - | 1   | 1   | 1-1803583-0 | APPLICATOR BASIC ASSEMBLY, SF       | 141     |
| - | 1   | 1   | 1803516-1   | RAM ASSEMBLY, SF PACIFIC            | 140     |
| - | 1   | 1   | 2844908-1   | SCREW, LOCKING                      | 99      |
| - | 1   | 1   | 2844907-1   | POST, LOCKING                       | 98      |
| - | 1   | 1   | 455888-6    | SPACER, CRIMPER                     | 82      |
| - | 1   | 1   | 1803607-3   | DOCUMENTATION PACKAGE               | 71      |
| - | 1   | 1   | 2119740-1   | TAG, IDENTIFICATION                 | 67      |
| - | 2   | 2   | 2168078-1   | SCREW, DRIVE, RH, RoHS, 2 x .188    | 66      |
| - | 1   | 1   | 5-18022-5   | SCR, HEX HD CAP, M4 X 6.0           | 59      |
| - | 1   | 1   | 1338685-1   | PAWL, FEED                          | 56      |
| - | 2   | 2   | 1-2168083-0 | SCR, SKT HD CAP, RoHS, M4 X 10      | 53      |
| - | 1   | 1   | 5018030-1   | NUT, HEX, REG, RoHS, M3             | 52      |
| - | 1   | 1   | 811242-5    | BUMPER, HOLD DOWN                   | 51      |
| - | 1   | 1   | 690753-2    | SPACER, TONKER                      | 50      |
| - | 1   | 2   | 18023-9     | SCR, SKT HD CAP M4 X 6.0            | 49      |
| - | -   | 1   | 2119652-1   | FEED CAM, PRE FEED                  | 48      |
| - | 1   | 1   | 1803602-1   | SCR, BHSC, RoHS (M8 X 25)           | 41      |
| - | 1   | 1   | 3-1752356-3 | SUPPORT, TERMINAL                   | 34      |
| - | 2   | 2   | 2079383-5   | SCR, BHSC, RoHS (M4 X 20)           | 33      |
| - | 2   | 2   | 3-2844962-0 | SPACER, CYLINDRICAL, STRIP GUIDE    | 30      |
| - | 1   | 1   | 2844992-4   | ASSEMBLY, STRIP GUIDE               | 29      |
| - | 1   | 1   | 455888-3    | SPACER, CRIMPER                     | 28      |
| - | 1   | 1   | 240792-1    | DRAG, TERMINAL                      | 25      |
| - | 1   | 1   | 1320928-2   | STRIP GUIDE                         | 24      |
| - | 1   | 1   | 2168083-2   | SCR, SKT HD CAP, RoHS, M4 X 8.0     | 21      |
| - | 2   | 2   | 1-18028-2   | WASHER, FLAT, REG M4                | 20      |
| - | 1   | 1   | 2119533-1   | STRIPPER, SIDE FEED                 | 19      |
| - | 1   | 1   | 2119806-1   | INSERT, SHEAR                       | 13      |
| - | 1   | 1   | 3-22280-3   | SPRING, COMPRESSION                 | 12      |
| - | 1   | 1   | 1-356885-4  | STOP, SHEAR                         | 11      |
| - | 1   | 1   | 2119805-1   | SHEAR HOLDER, FRONT                 | 10      |
| - | 1   | 1   | 1803095-6   | FLOATING SHEAR, FRONT               | 9       |
| - | 1   | 1   | 6-1803054-7 | ANVIL, COMBINATION                  | 8       |
| - | -   | -   | -           | -                                   | 7       |
| - | -   | -   | -           | -                                   | 6       |
| - | 1   | 1   | 2119757-8   | DEPRESSOR, SHEAR                    | 5       |
| - | 1   | 1   | 238011-7    | BLOCK, CRIMPER SPACER               | 4       |
| - | 1   | 1   | 3-1803017-9 | CRIMPER, INSULATION F               | 3       |
| - | 1   | 1   | 455888-6    | SPACER, CRIMPER                     | 2       |
| - | 1   | 1   | 7-1633730-6 | CRIMPER, WIRE                       | 1       |
| - | 77  | -22 | -21         | PART NO                             | ITEM NO |

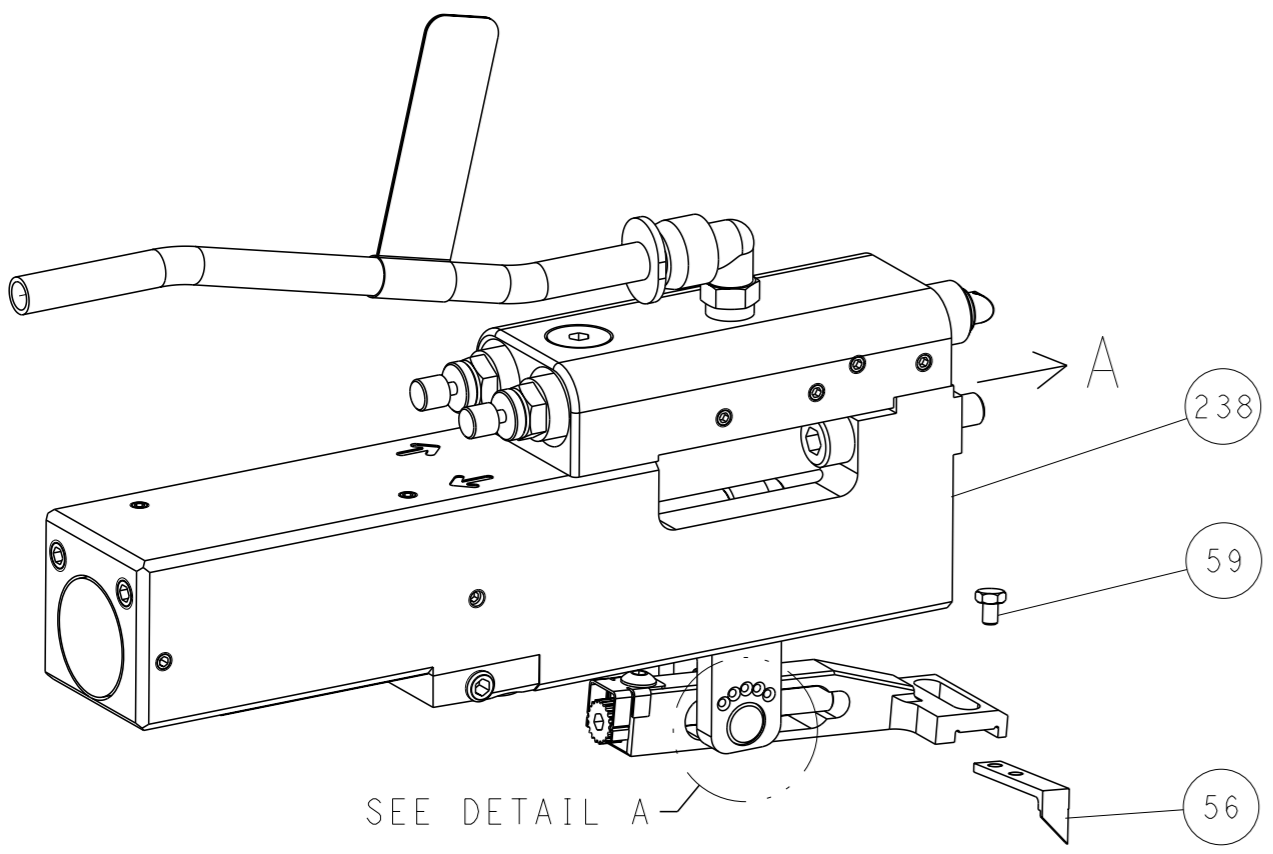
|   |  |  |  |
|---|--|--|--|
| <small>THE DRAWING IS UNPUBLISHED. IT IS SUBJECT TO CHANGE AND THE DRAWING INFORMATION SHOULD BE CONTACTED FOR THE LATEST REVISION.</small> |  | OWN: H. HUANG 10NOV2014<br>CHK: L. ZHANG 10NOV2014<br>APVD: J. GUO 10NOV2014 | NAME: Ocean Side Feed Applicator<br>SIZE: A1<br>CAGE CODE: 00779<br>DRAWING NO: 2266522<br>SCALE: 1:2<br>SHEET: 3 OF 4<br>REV: B |
| DIMENSIONS: mm<br>0 PLC ±<br>1 PLC ±<br>2 PLC ±<br>3 PLC ±<br>4 PLC ±<br>ANGLES FINISH ±  |  | TOLERANCES UNLESS OTHERWISE SPECIFIED:<br>±<br>±<br>±<br>±<br>±              | RESTRICTED TO: Customer Accessible Production Drawing  |

| LOC |    | DIST |     | REVISIONS   |      |     |      |
|-----|----|------|-----|-------------|------|-----|------|
| A   | 66 | P    | LYR | DESCRIPTION | DATE | OWN | APVD |
|     |    | -    |     | SEE SHEET 1 | -    | -   | -    |

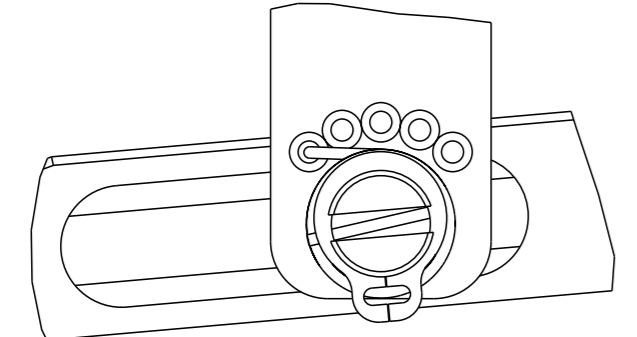
# FEED TYPE MECHANICAL



# PNEUMATIC

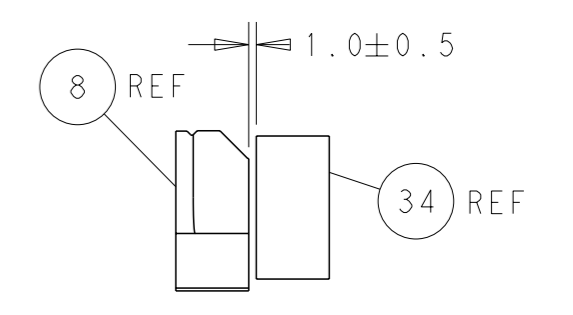
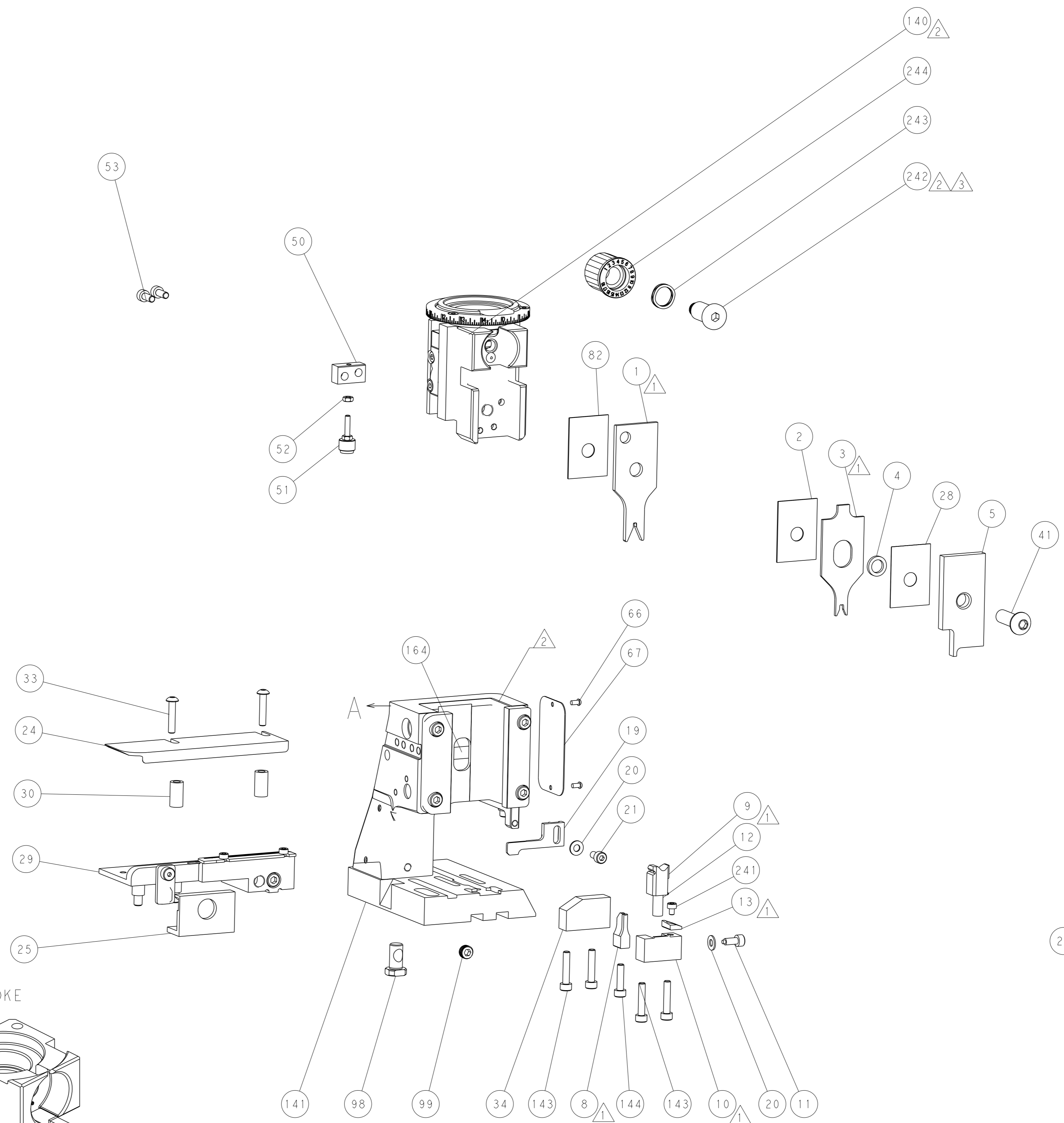
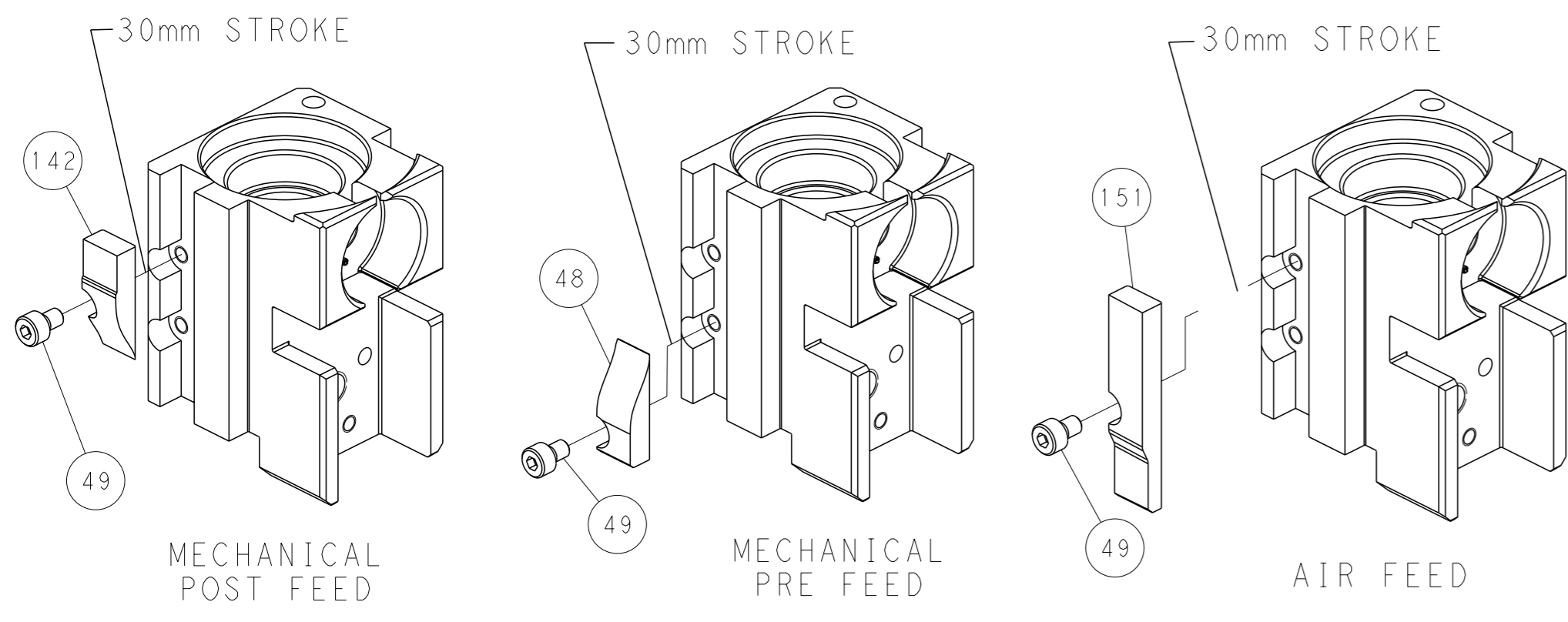


# FEED SPRING SETTING POSITION (SHOWN FROM REAR SIDE)

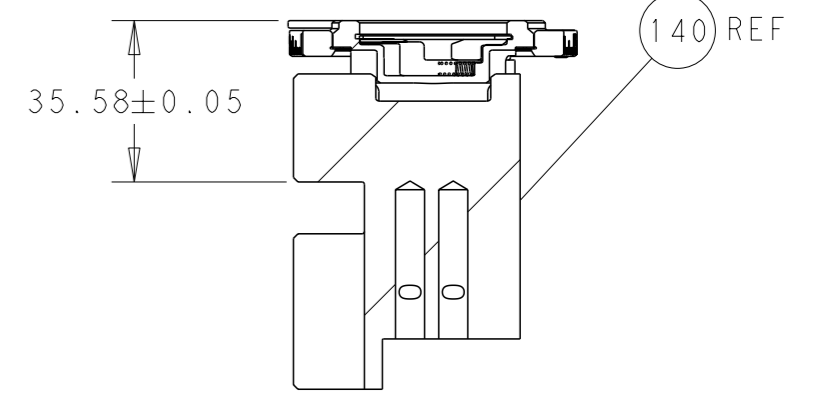


DETAIL A

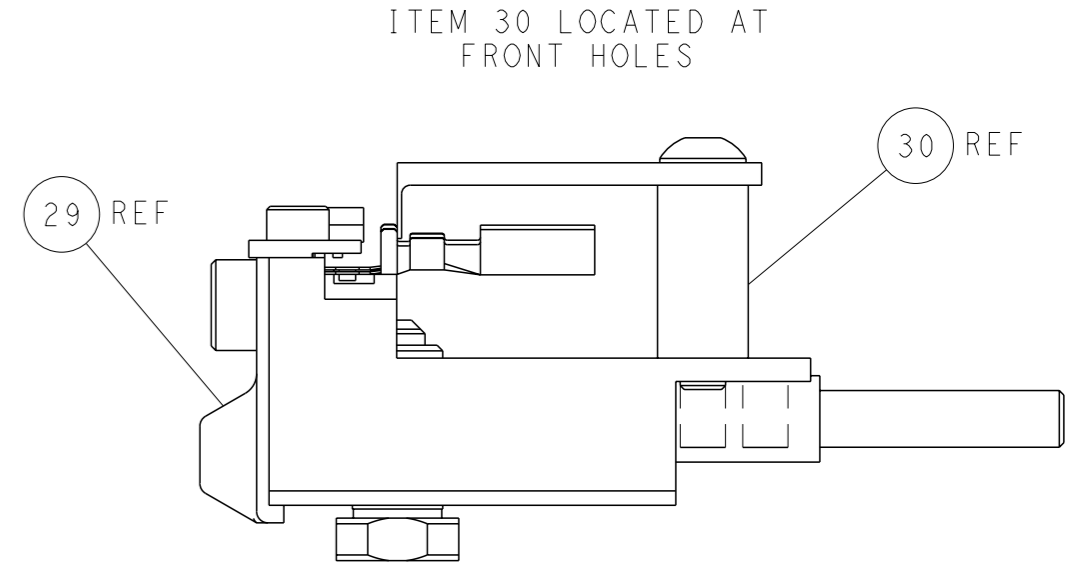
# CAM POSITIONS



TERMINAL SUPPORT LOCATION



HOLDDOWN SET-UP



FEED TRACK POSITION  
GUIDE BY INSULATION BARREL

**PACIFIC VERSION**  
 Shown on sheets 3 of 4 & 4 of 4  
 (Atlantic version shown on sheets 1 of 4 & 2 of 4)

|   |  |   |  |
|---|--|---|--|
| <small>THIS DRAWING IS A CONTROLLED DOCUMENT FOR TYCO ELECTRONICS CORPORATION. IT IS SUBJECT TO CHANGE AND THE CONTROLLER'S ENGINEERING DEPARTMENT SHOULD BE CONTACTED FOR THE LATEST REVISION.</small> |  | DWN: H. HUANG 10NOV2014<br>CHK: L. ZHANG 10NOV2014<br>APVD: H. GUO 10NOV2014                          | TE Connectivity<br>Harrisburg, PA 17105-3608                                     |
| DIMENSIONS: mm<br>TOLERANCES UNLESS OTHERWISE SPECIFIED:<br>0 PLC ±<br>1 PLC ±<br>2 PLC ±<br>3 PLC ±<br>4 PLC ±<br>ANGLES FINISH ±  |  | NAME: Ocean Side Feed Applicator<br>PRODUCT SPEC: -<br>APPLICATION SPEC: -<br>WEIGHT: -<br>SCALE: 1:2 | SIZE: A1<br>CAGE CODE: 00779<br>DRAWING NO: C=2266522<br>SHEET: 4 of 4<br>REV: B |
| MATERIAL: -<br>FINISH: -  |  | Customer Accessible Production Drawing  |  |