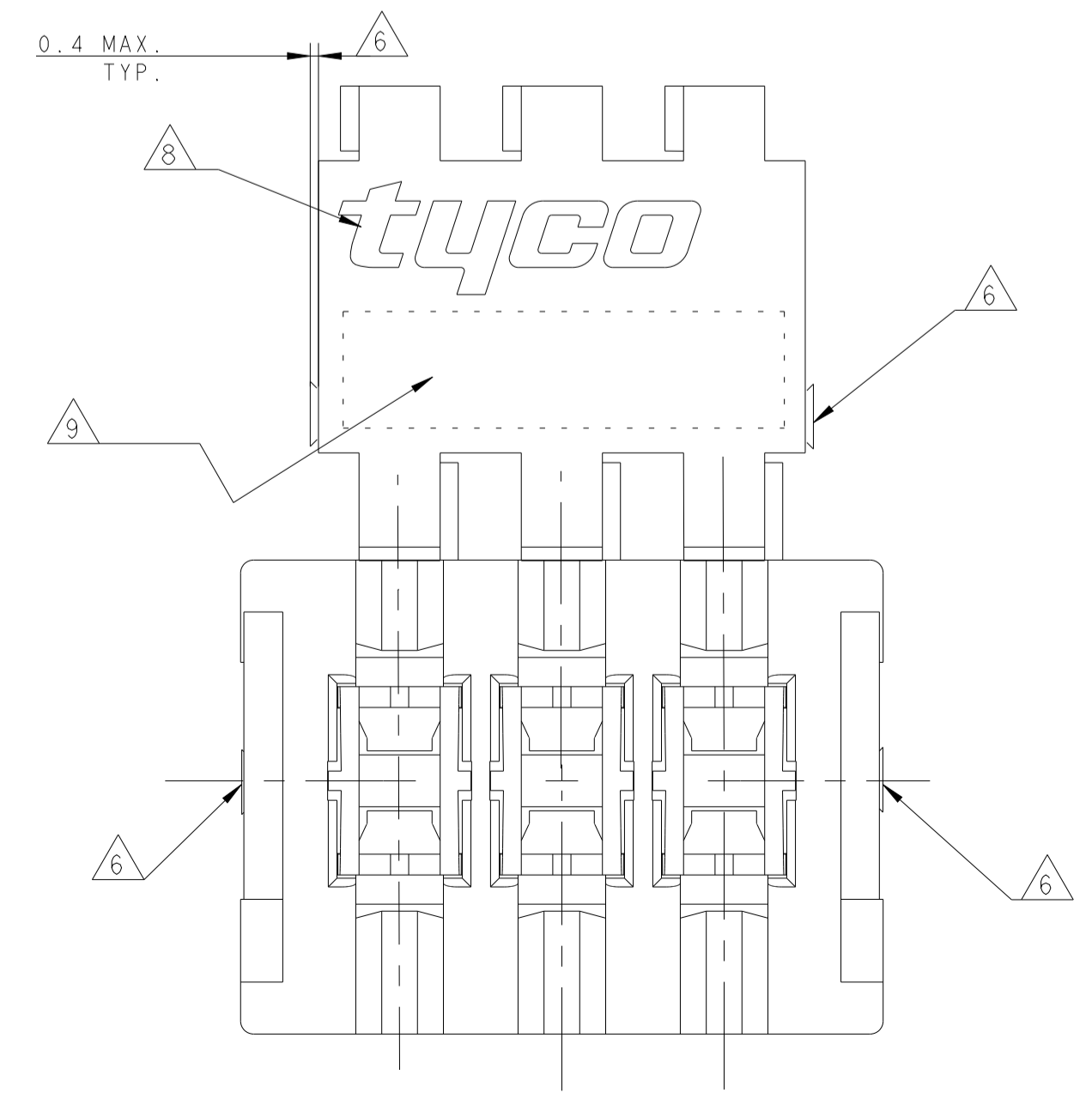
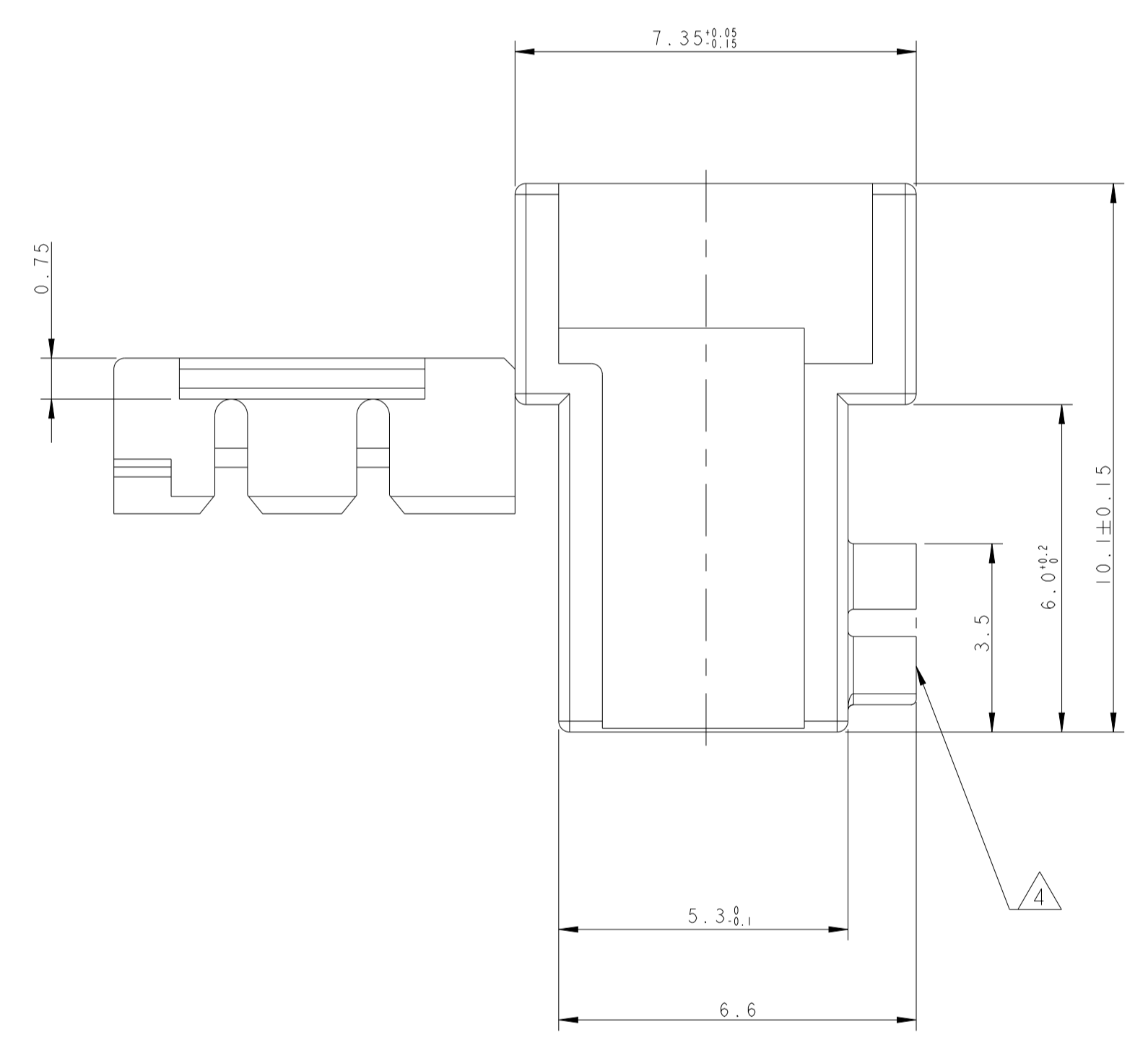
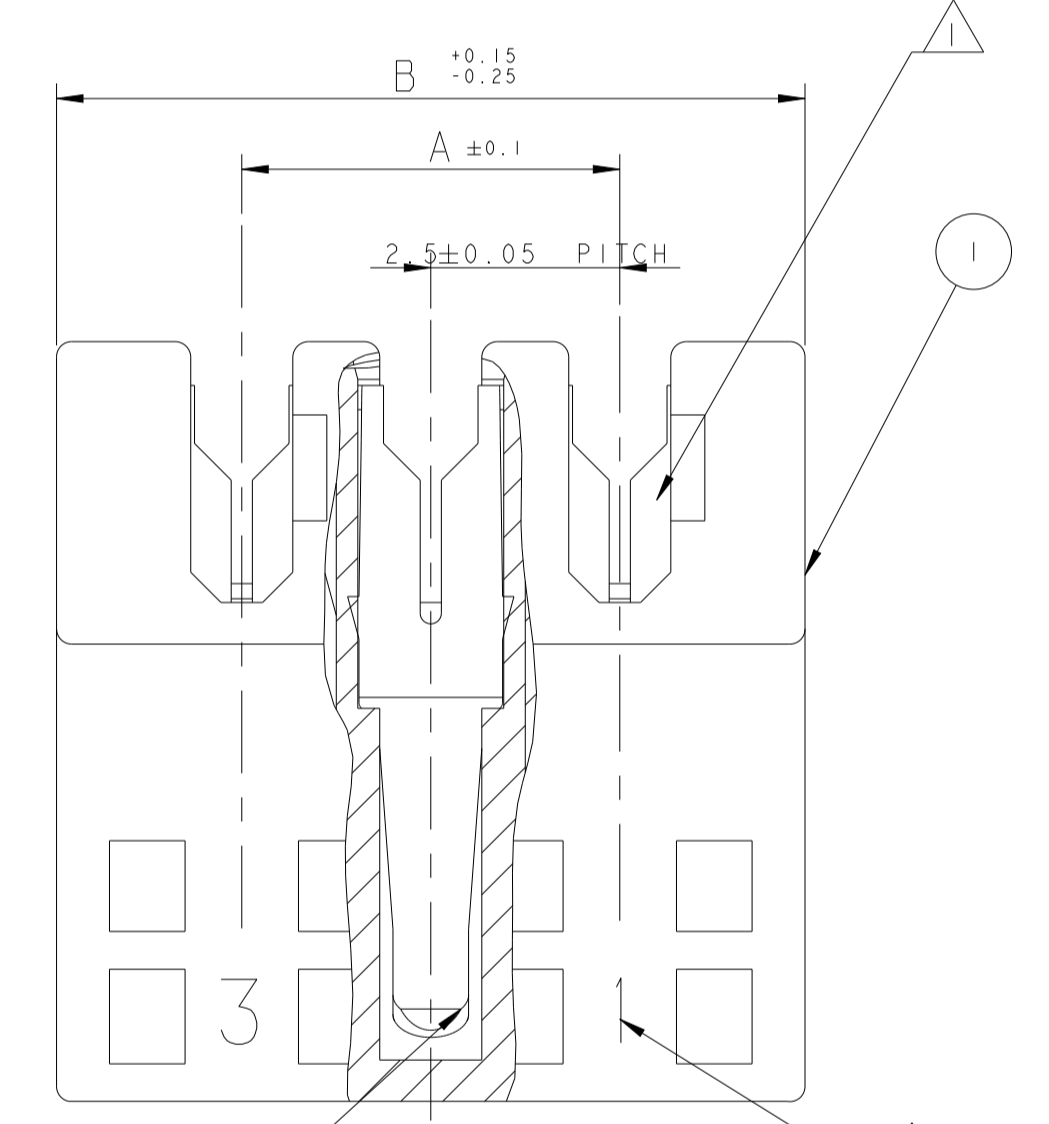
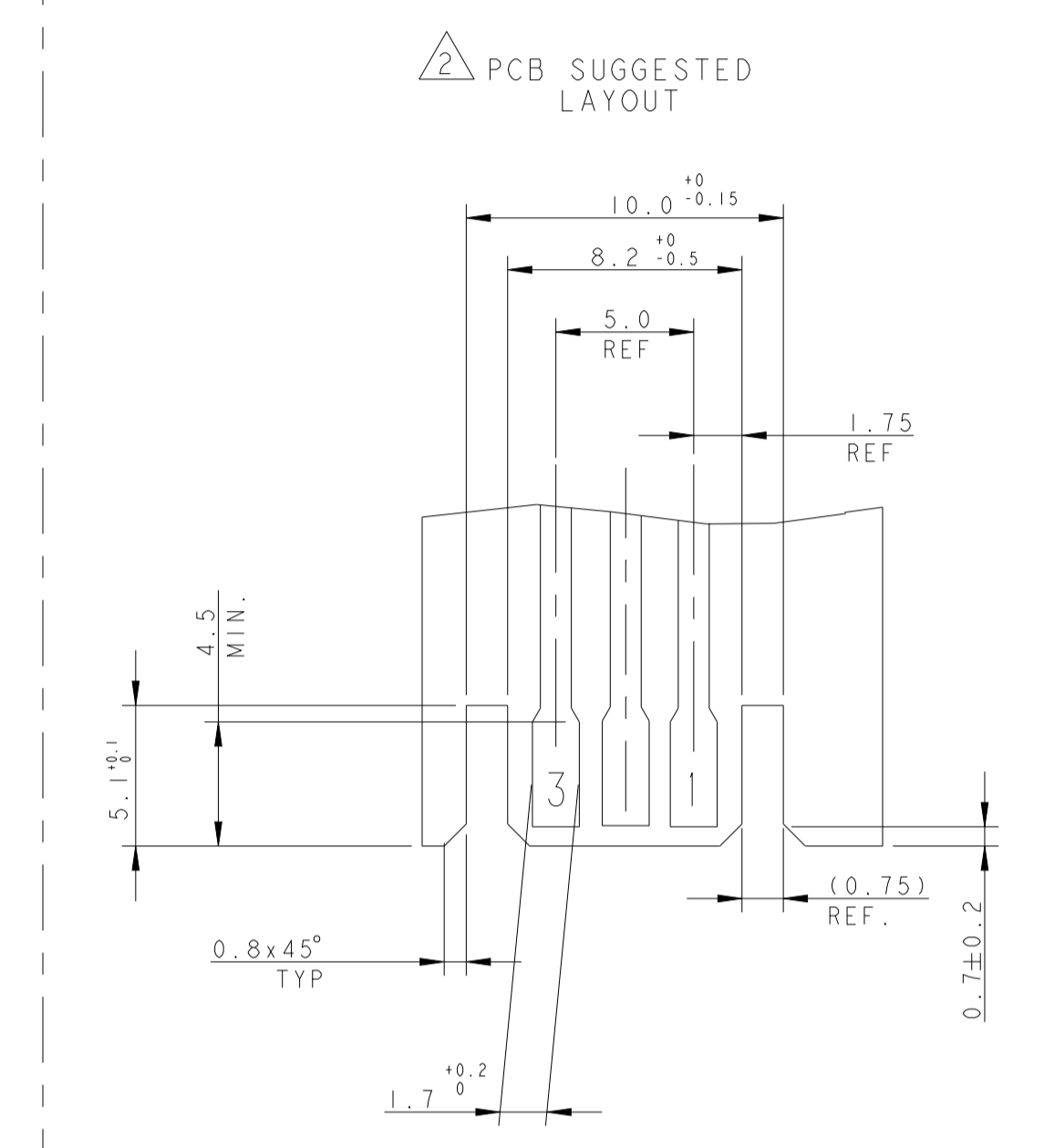
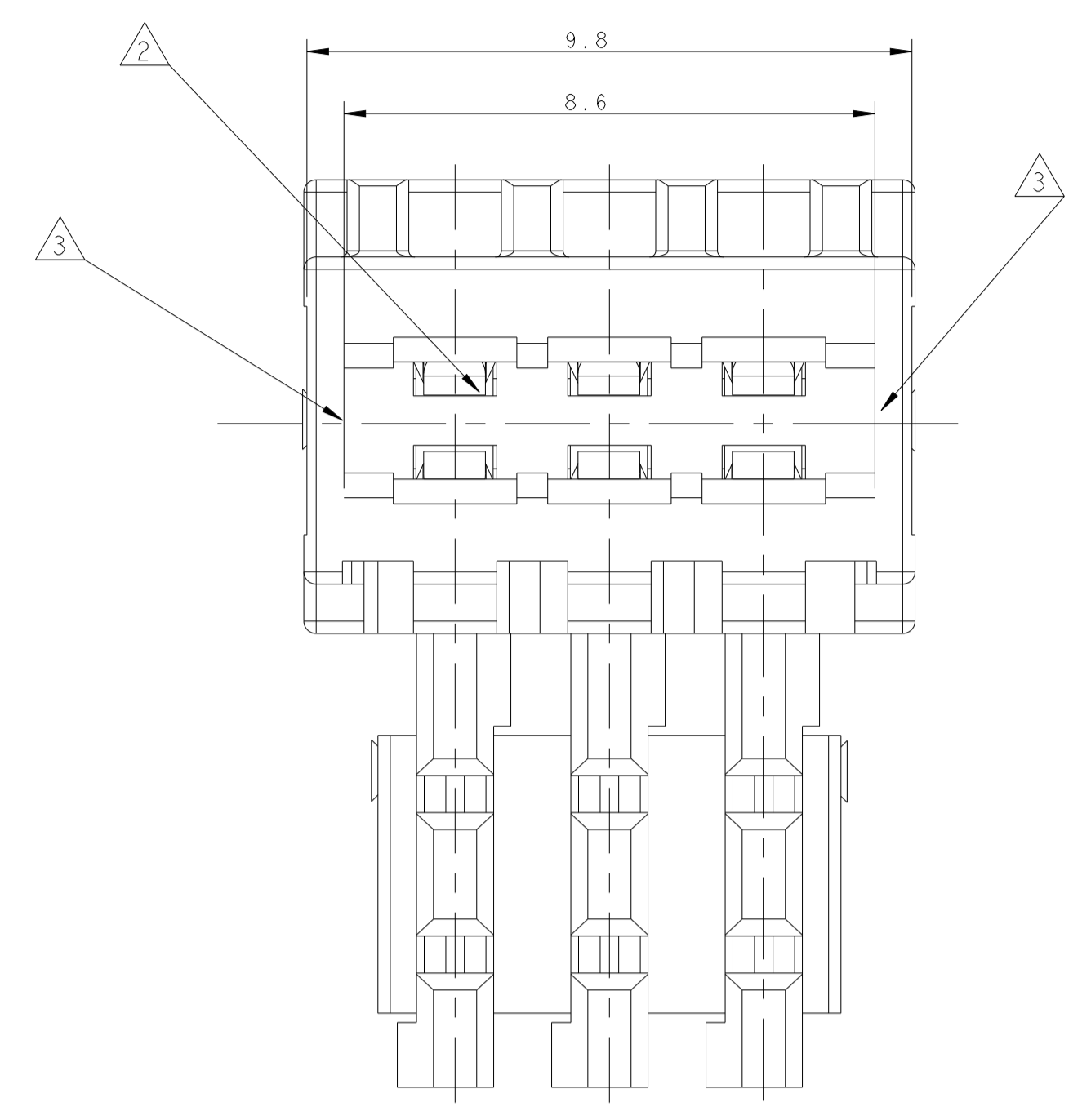
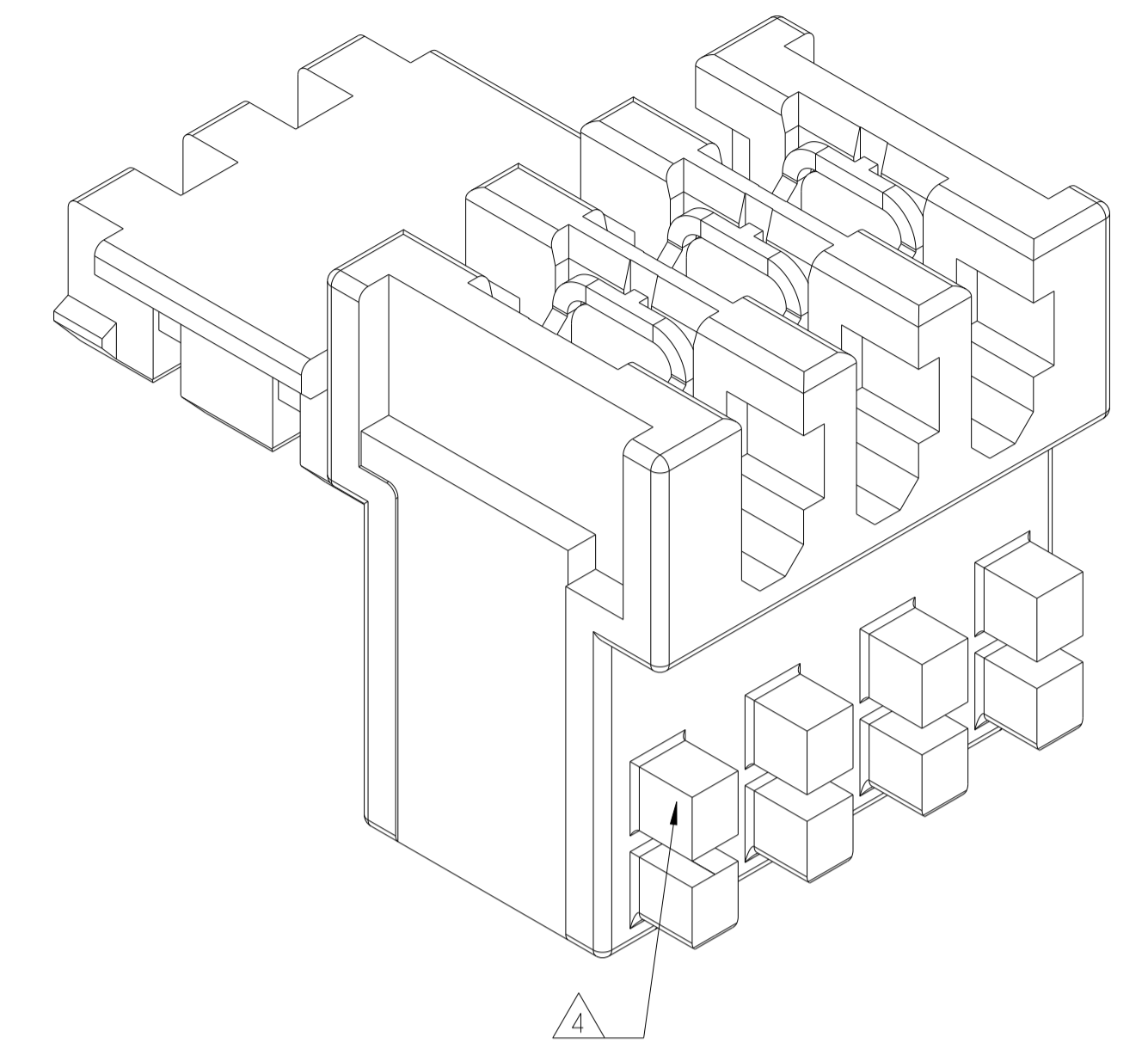


REVISIONS					
P	LTN	DESCRIPTION	DATE	DWN	APVD
B3	ECR-17-009651		19JUL2017	RS	DC
C	ECR-19-015552		11NOV2019	KD	FL
D	ECR-22-1135817		15APR2022	DC	FL
D1	ECR-22-162225		30JAN2023	DC	FL

3D VIEW FOR REFERENCE



- ① WIRE RANGE : STRANDED 0.22-0.35 mm (INS. DIA. 1.30±0.1)
- ② MATING PART: SPECIAL APPLICATION ON CUSTOMER P.C.B., SINGLE OR DOUBLE SIDE, THK 1.5 (COPPER CLADDING INCLUDED), SEE ALSO DETAIL FOR PCB LAYOUT
- ③ EXTERNAL WALL ON BOTH SIDES
- ④ KEYING RIBS TO BE REMOVED BY TERMINATION MACHINE
- ⑥ CUT OFF DIMENSION DUE TO PRODUCTION PROCESS
- ⑦ CIRCUIT No. IDENTIFICATION
- ⑧ TYCO ELECTRONICS TRADEMARK (OPTIONAL POSITION)
- ⑨ TAMPOGRAPHIC COLOUR CODE AREA (P/Ns IDENTIFICATION BEFORE CRIMPING AREA)
- ⑩ FOR THIS SPECIAL APPLICATION THE ENGAGING END SEPARATING FORCE LIMITS REPORTED ON RELEVANT SPEC. ARE NOT APPLICABLE.
- ⑪ NOT YET RELEASED FOR PRODUCTION
- ⑫ PBT GF
- ⑬ PA GF, UL94-V0 & GWEPT 750 NO-FLAME, NATURAL
- ⑭ ALTERNATIVE RESIN PBT GF

SUITABLE FOR SEMI-AUTOMATIC HARNESS PROCESS ONLY

P/N 0-293132-3 AS SHOWN

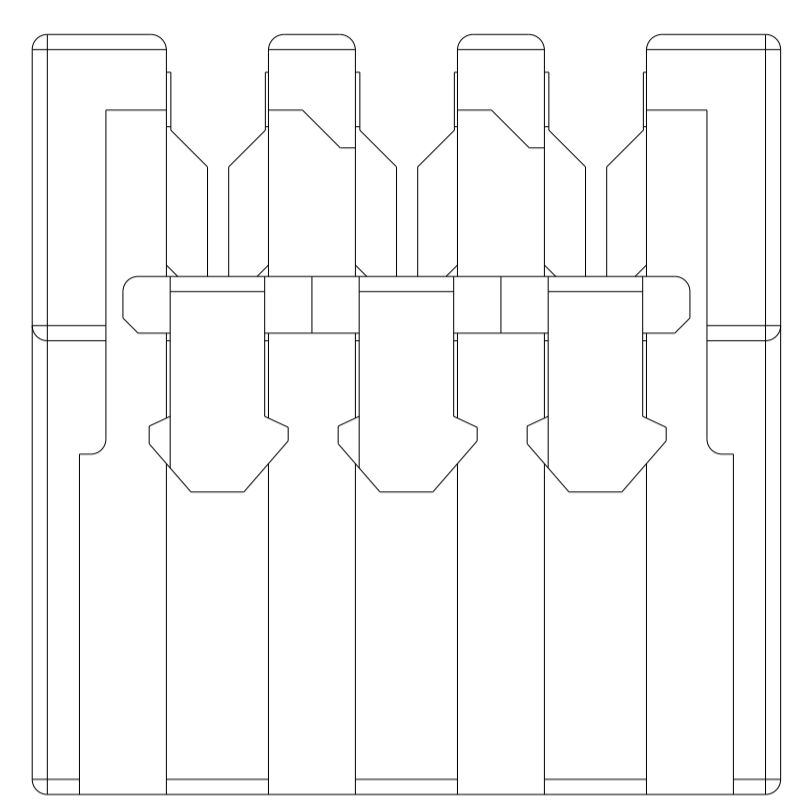
ORANGE	3	5.0	9.9	0-293132-3	2311500-3	2404973-3
COLOUR CODE	HSG POS	DIM. A	DIM. B	TE P/N	TE P/N	TE P/N

QTY	MATERIAL	DESCRIPTION	ITEM
SEE TABLE	PH. BRONZE, TIN PLATED	IDC RECEPTACLE CONTACT	2
	PBT GLASS FIBER FILLED	FEMALE HOUSING	1

THIS DRAWING IS A CONTROLLED DOCUMENT.		DWN: C. CORDOLA 03 OCT 06
DIMENSIONS: mm	TOLERANCES UNLESS OTHERWISE SPECIFIED:	NAME: DUOPLUG 2.5 FEM. CONN. WITH EXT. WALLS (CTC. FULLY LOADED)
0 PLC ±0.2	1 PLC ±0.2	PRODUCT SPEC: 108-18056
2 PLC ±0.2	3 PLC ±0.2	APPLICATION SPEC: 114-18049-1
4 PLC ±0.2	ANGLES ±1°	SIZE: A100779
FINISH: SEE TABLE	SEE TABLE	SCALE: 10:1
REVISIONE DELL'ASSEMBLATO (REVISION OF EACH ASSY NO)		RESTRICTED TO: -
ELENCO DEI COMPONENTI (PARTS LIST)		WEIGHT: -
		CUSTOMER DRAWING: 100779C=293132
		SHEET 1 OF 2
		REV: D1

THIS DRAWING IS UNPUBLISHED. RELEASED FOR PUBLICATION 20  
 © COPYRIGHT 20 BY - ALL RIGHTS RESERVED.

REVISIONS				
P	LTN	DESCRIPTION	DATE	APVD
		SEE SHEET 1		



THIS DRAWING IS A CONTROLLED DOCUMENT.		DWN C. CORDOLA	03 OCT 06						
DIMENSIONS: mm		CHK -	APVD -			NAME DUOPLUG 2.5 FEM. CONN. WITH EXT. WALLS (CTC. FULLY LOADED)			
TOLERANCES UNLESS OTHERWISE SPECIFIED:		0 PLC ±0.2 1 PLC ±0.2 2 PLC ±0.2 3 PLC ± 4 PLC ± ANGLES ±1° FINISH		PRODUCT SPEC 108-18056 APPLICATION SPEC 114-18049-1	SIZE A100779	CAGE CODE C=293132	DRAWING NO RESTRICTED TO -		
MATERIAL SEE TABLE	SEE TABLE	WEIGHT -		CUSTOMER DRAWING		SCALE 10:1	SHEET 2	OF 2	REV D1