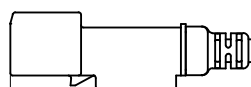
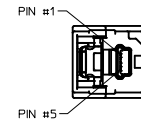
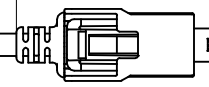


LABEL 51 X 45  
SEE NOTE 7

10±5



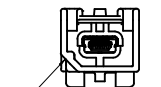
DIM - "A"

MINI-B INLINE RECEPTACLE  
POLARIZATION OPTIONS

Ⓢ WIRING DIAGRAM

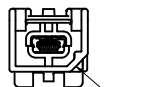
SIGNAL NAME	CONTACT #	MINI-B PLUG (HOST)	MINI-B PLUG (TARGET)	CONTACT #	SIGNAL NAME
		WIRE COLORS	WIRE COLORS		
PWR	PIN 1	RED	RED	PIN 1	PWR
DOUT-/RIN-	PIN 2	NATURAL	NATURAL	PIN 2	DOUT-/RIN-
DOUT+/RIN+	PIN 3	NATURAL W/BUE STRIPE	NATURAL W/BUE STRIPE	PIN 3	DOUT+/RIN+
SIGNAL SHIELDING	PIN 4	SIGNAL SHIELD DRAIN WIRE		PIN 4	SIGNAL SHIELDING
GND	PIN 5	BLACK	BLACK	PIN 5	GND
CABLE BRAID	SHELL	BRAID TO SHELL TERMINATION		SHELL	CABLE BRAID

MINI-B PLUG  
POLARIZATION OPTIONS



NOTCH LOCATION

POLARIZATION "A"



NOTCH LOCATION

POLARIZATION "B"



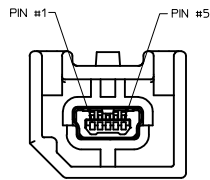
NOTCH LOCATION

POLARIZATION "A"

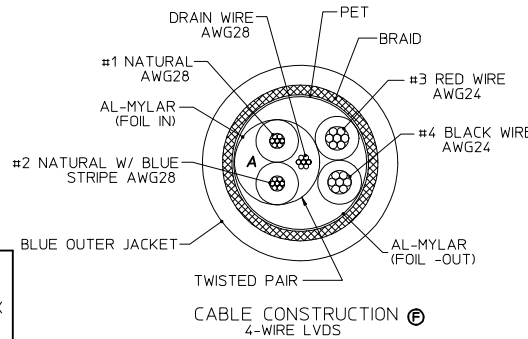


NOTCH LOCATION

POLARIZATION "B"



MATING HEADER FOR MINI-B PLUGS  
(POLARIZATION - A SHOWN)



CABLE CONSTRUCTION Ⓢ  
4-WIRE LVDS

MOLEX MAT. NO.	MINI-B PLUG POLARIZATION	MINI-B INLINE RECEPTACLE POLARIZATION	DIM "A" (mm)
111019-2010	A	A	500±10
111019-2020	A	B	500±10
111019-2030	B	A	500±10
111019-2040	B	B	500±10
111019-2050	A	A	700±10
111019-2060	A	A	1583±10

NOTES:

- PART MUST CONFORM TO THE ELECTRICAL CONNECTION SYSTEM DESIGN SPECIFICATION (SDS) VER 13, DATED 06-APR-06, TEMP CLASS "-40-85°C".
- PART MUST CONFORM TO THE LATEST LEVEL OF SAE/USCAR-30 & USB 2.0.
- ALL PLASTIC PARTS MUST HAVE MATERIAL IDENTIFICATION SYMBOLS CLEARLY MARKED, WHEREVER PACKAGE SIZE PERMITS.
- GENERAL TOLERANCES: ±0.25 ALL ONE PLACE DIMENSIONS, ±0.15 ALL TWO PLACE DIMENSIONS, AND ±0.5° ALL ANGULAR DIMENSIONS.
- 0.3MM MAXIMUM RADIUS PERMISSIBLE ON EDGES AND FILLETS SHOWN AS SHARP FOR PLASTIC PARTS.
- PARTS ARE TO BE FREE OF SCRATCHES, DISCOLORATION, SALT RESIDUE OR OTHER IMPERFECTIONS THAT MAY AFFECT FUNCTION OR FIT OF PART.
- IDENTIFICATION LABEL MUST DISPLAY CUSTOMER PART NUMBER IF REQUIRED, SUPPLIER PART NUMBER, DATE CODE (YYYYMMDD), REVISION, AND LOGO.
- LEAD FREE, NO ROHS EXEMPTIONS.
- FINISHES: TERMINAL: SELECTIVE GOLD (Au) IN THE CONTACT AREA, THICKNESS = 0.75 MICROMETER (30 MICROINCH) MINIMUM OVER NICKEL (Ni) OVERALL, THICKNESS = 1.25 MICROMETER (50 MICROINCH) MINIMUM.



LABEL FORMAT

LAST LETTER OF DATE CODE "X":  
"D" = DAY SHIFT, "N" = NIGHT SHIFT  
BAR CODE = MOLEX MATERIAL NUMBER

<b>LVDS COLOR CHANGED</b> EC NO: CP02016-3975 DRAWN BY: WATSON WATSONS 2016/05/17 CHKD: APPR: KLIN02 2016/07/04	QUALITY SYMBOLS ∇=0 ∇=0 ∇=0	GENERAL TOLERANCES (UNLESS SPECIFIED) <table border="1"> <thead> <tr> <th></th> <th>mm</th> <th>INCH</th> </tr> </thead> <tbody> <tr> <td>4 PLACES</td> <td>±---</td> <td>±---</td> </tr> <tr> <td>3 PLACES</td> <td>±---</td> <td>±---</td> </tr> <tr> <td>2 PLACES</td> <td>±---</td> <td>±---</td> </tr> <tr> <td>1 PLACE</td> <td>±---</td> <td>±---</td> </tr> <tr> <td>0 PLACE</td> <td>±</td> <td>±</td> </tr> </tbody> </table>		mm	INCH	4 PLACES	±---	±---	3 PLACES	±---	±---	2 PLACES	±---	±---	1 PLACE	±---	±---	0 PLACE	±	±	DIMENSION STYLE <b>MM ONLY</b>	SCALE <b>2:1</b>	DESIGN UNITS <b>METRIC</b>	THIRD ANGLE PROJECTION
		mm	INCH																					
	4 PLACES	±---	±---																					
	3 PLACES	±---	±---																					
2 PLACES	±---	±---																						
1 PLACE	±---	±---																						
0 PLACE	±	±																						
			DRAWN BY: J.REEVES CHECKED BY: J.REEVES APPROVED BY: KMONROE	DATE: 2007/09/11 DATE: 2007/09/11 DATE: 2007/09/12	TITLE <b>LVDS CABLE ASSY, 4-WIRE MINI-B INLINE RECEPTACLE TO MINI-B PLUG STRT</b>																			
		ANGULAR ± 1 ° DRAFT WHERE APPLICABLE MUST REMAIN WITHIN DIMENSIONS	MATERIAL NO. <b>SEE CHART</b>	DOCUMENT NO. <b>SD-11019-2000</b>	SHEET NO. <b>1 OF 1</b>																			
			THIS DRAWING CONTAINS INFORMATION THAT IS PROPRIETARY TO MOLEX INCORPORATED AND SHOULD NOT BE USED WITHOUT WRITTEN PERMISSION																					