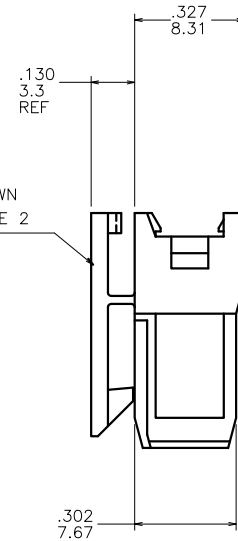
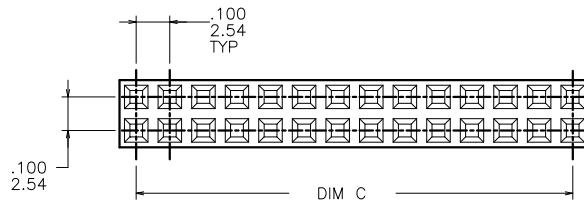
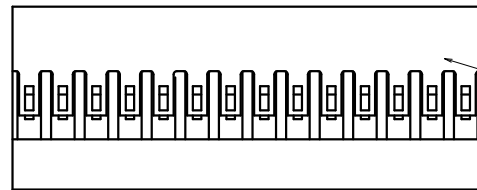
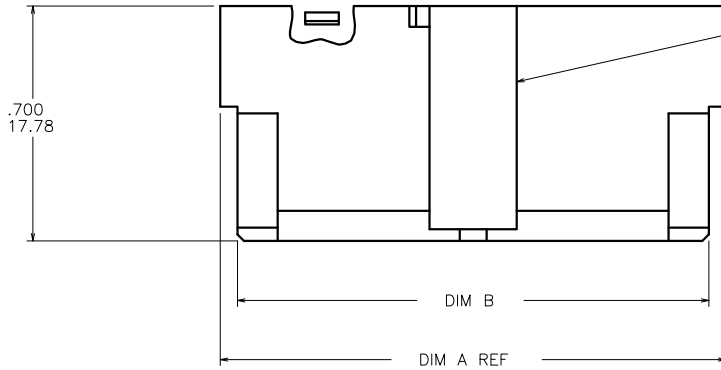


PRODUCT NUMBER
SEE TABLE



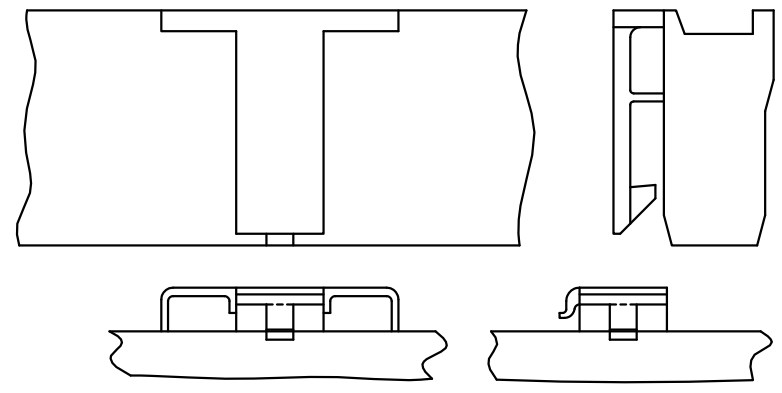
STYLE 1 LATCH SHOWN
SEE VIEW Z FOR STYLE 2

NOTES:

- MATERIAL: MODIFIED POLYPHENELENE ETHER, COLOR BLACK, UL-94V-0.
- APPLICABLE SPECIFICATIONS:
BUS-12-067: PRODUCT SPECIFICATION
TA-75: CRIMPING INSTRUCTIONS (TERMINALS MUST BE CRIMPED PROPERLY FOR SATISFACTORY LATCHING).
TA-531: INSTALLING AND REMOVING TERMINALS
- PRODUCT MEETS EUROPEAN UNION DIRECTIVES AND OTHER COUNTRY REGULATIONS AS DESCRIBED IN GS-22-008.
- THIS PRODUCT IS NOT INTENDED TO BE EXPOSED TO MANUFACTURING SOLDER PROCESSES.

mat'l. code SEE NOTE 1				surface	tolerance	projection	product family PV HOUSINGS
ltr	ec'n no	dr	date	tolerances unless otherwise specified		INCH/MM	title
F	v06-0357	HTB	2006-04-17	angles	linear		MINI LATCH HOUSING SHROUD ASSEMBLY
G	v06-1045	HTB	2006-10-18			scale 5:1	
H	v07-0097	HTB	2007-01-31	0°±2'			sheet 1 of 2 size
J	v07-0533	HTB	2007-08-21	dr	T. BREWBAKER	2006-04-17	dwg no
K	v08-0033	HTB	2008-01-23	engr	T. BREWBAKER	2006-04-17	69153
L	v09-0154	HTB	2009-04-14	chr	T. BREWBAKER	2006-04-17	A3
				appd	T. BREWBAKER	2006-04-17	type
sheet	revision	L	L				Product Customer Drawing
index	sheet	1	2				

PRODUCT NUMBER	DIM A	DIM B	DIM C	HOUSING POS REF	LATCH STYLE
69153-001		U N A V A I L A B L E			2
69153-002		U N A V A I L A B L E			
69153-003		U N A V A I L A B L E			
69153-004		U N A V A I L A B L E			
69153-005		U N A V A I L A B L E			
69153-006		U N A V A I L A B L E			
69153-007		U N A V A I L A B L E			
69153-008		U N A V A I L A B L E			
69153-009		U N A V A I L A B L E			
69153-010		U N A V A I L A B L E			
69153-011		U N A V A I L A B L E			
69153-012LF	2.606/66.19	2.519/63.98	2.400/60.96	2 X 25	1
69153-013		U N A V A I L A B L E			
69153-014		U N A V A I L A B L E			
69153-015LF	2.306/58.57	2.219/56.36	2.100/53.34	2 X 22	
69153-016		U N A V A I L A B L E			
69153-017		U N A V A I L A B L E			
69153-018		U N A V A I L A B L E			
69153-019		U N A V A I L A B L E			
69153-020LF	1.806/45.87	1.719/43.66	1.600/40.64	2 X 17	
69153-021		U N A V A I L A B L E			
69153-022		U N A V A I L A B L E			
69153-023LF	1.506/38.25	1.419/36.04	1.300/33.02	2 X 14	
69153-024LF	1.406/35.71	1.319/33.50	1.200/30.48	2 X 13	
69153-025		U N A V A I L A B L E			
69153-026		U N A V A I L A B L E			
69153-027LF	1.106/28.09	1.019/25.88	.900/22.86	2 X 10	
69153-028		U N A V A I L A B L E			
69153-029LF	.906/23.01	.819/20.80	.700/17.78	2 X 8	
69153-030LF	.806/20.47	.719/18.26	.600/15.24	2 X 7	
69153-031LF	.706/17.93	.619/15.72	.500/12.70	2 X 6	
69153-032LF	.606/15.39	.519/13.18	.400/10.16	2 X 5	
69153-033LF	.506/12.85	.419/10.64	.300/7.62	2 X 4	
69153-034LF	.606/15.39	.519/13.18	.400/10.16	2 X 5	
69153-035LF	.906/23.01	.819/20.80	.700/17.78	2 X 8	



VIEW Z LATCH STYLE 2 STYLE 1

PRODUCT NUMBER	DIM A	DIM B	DIM C	HOUSING POS REF	LATCH STYLE
CUSTOMER RESTRICTED					
69153-012ELF	2.606/66.19	2.519/63.98	2.400/60.96	2 X 25	2
69153-024ELF	1.406/35.71	1.319/33.50	1.200/30.48	2 X 13	2
69153-026ELF	1.206/30.63	1.119/28.42	1.000/25.40	2 X 11	2

mat'l. code SEE NOTE 1				surface <input checked="" type="checkbox"/> tolerance		projection		product family PV HOUSINGS	
ltr	ecn no	dr	date	tolerances unless otherwise specified				title	
L				angles	linear	INCH/MM		MINI LATCH HOUSING SHROUD ASSEMBLY	
				0°±2'		scale 5:1			
				dr	T. BREWBAKER	2006-04-17		dwg no	
				engr	T. BREWBAKER	2006-04-17		sheet 2 of 2	
				chr	T. BREWBAKER	2006-04-17		size	
				appd	T. BREWBAKER	2006-04-17		A3	
sheet index		revision sheet						type Product Customer Drawing	



Copyright FCJ