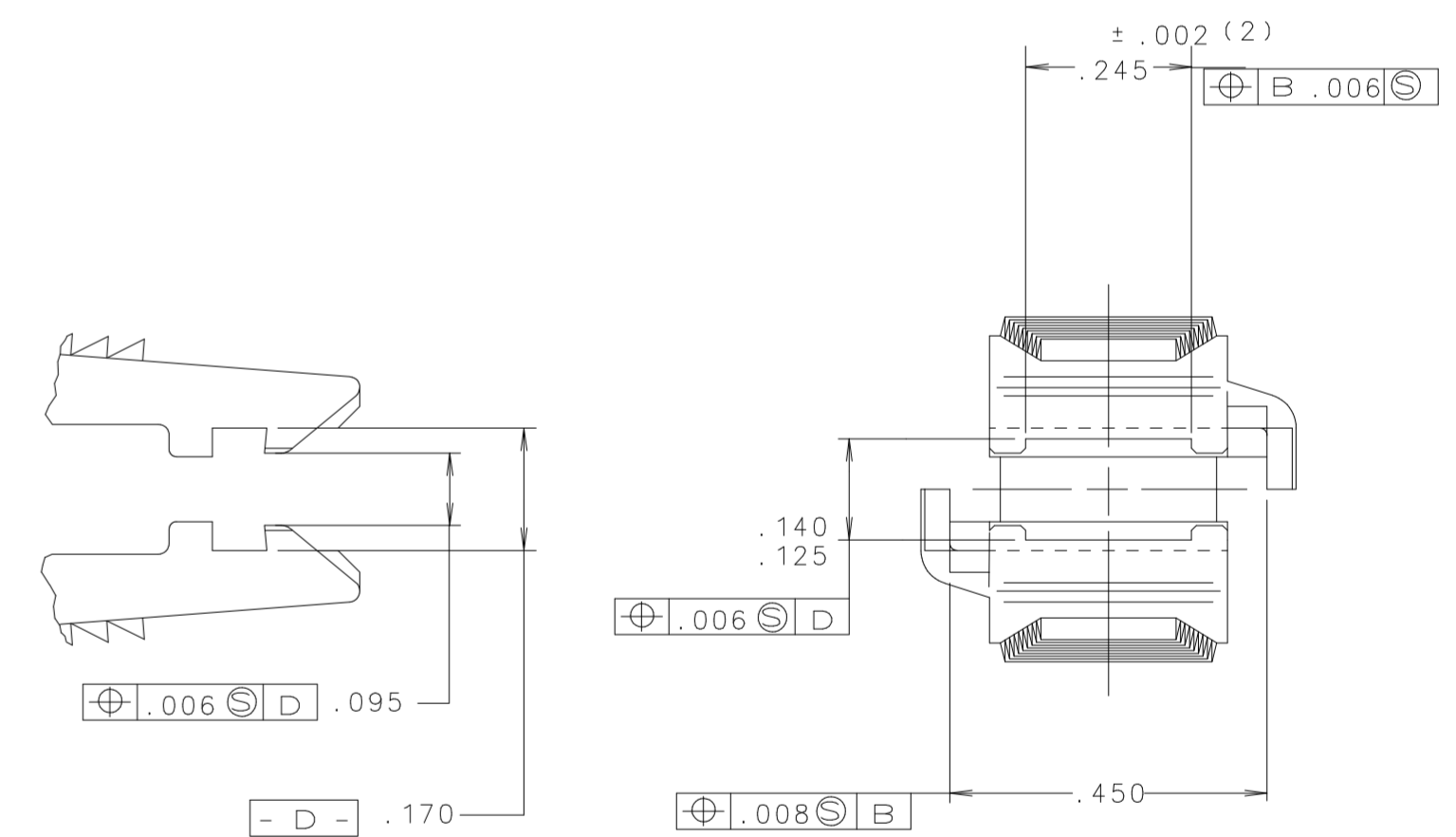
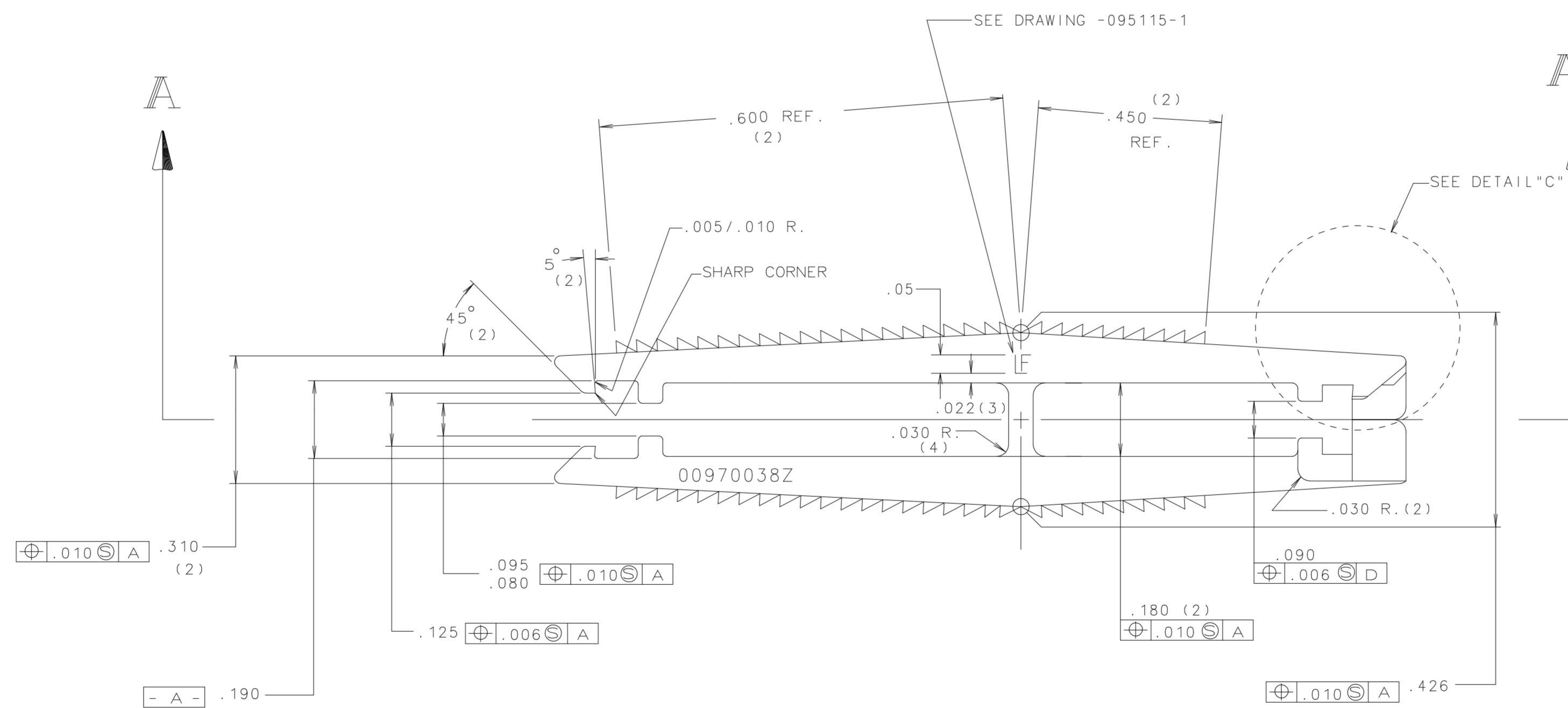
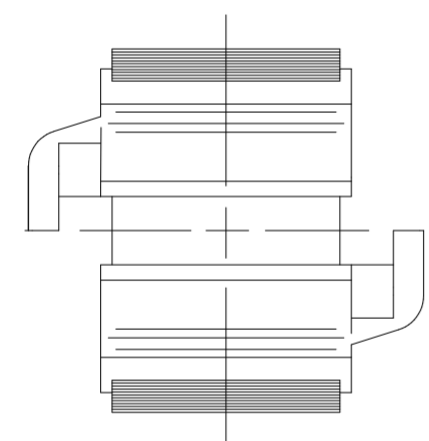
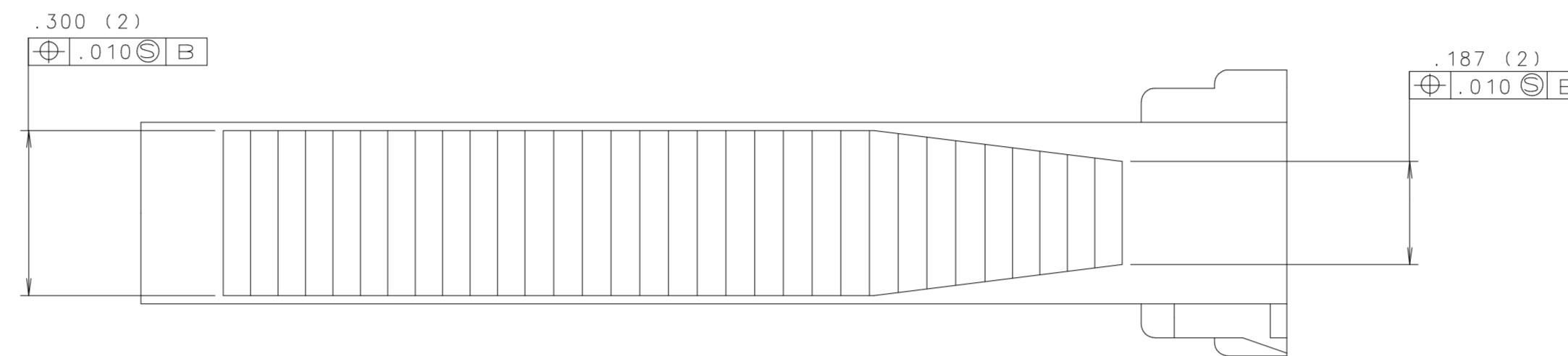
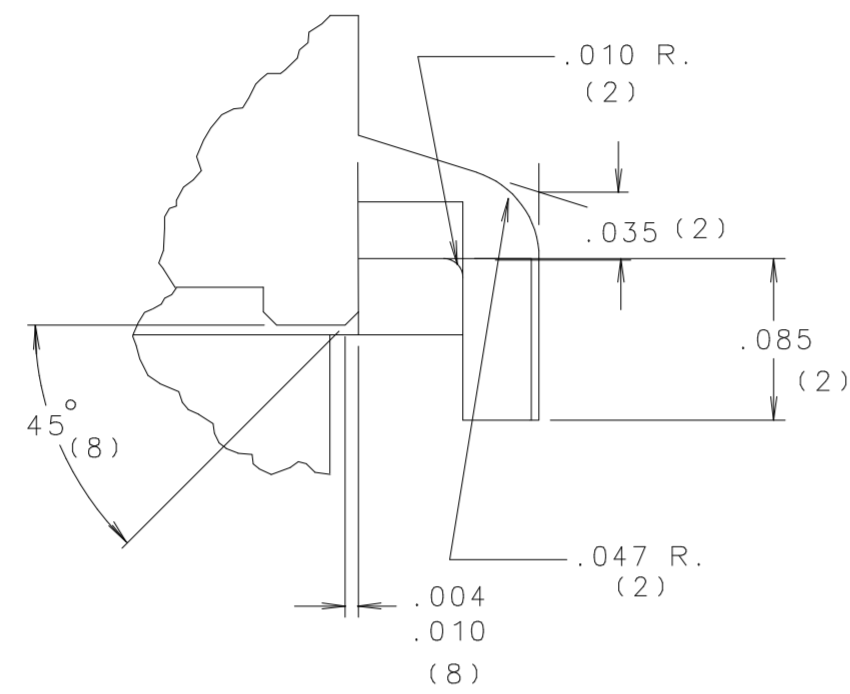
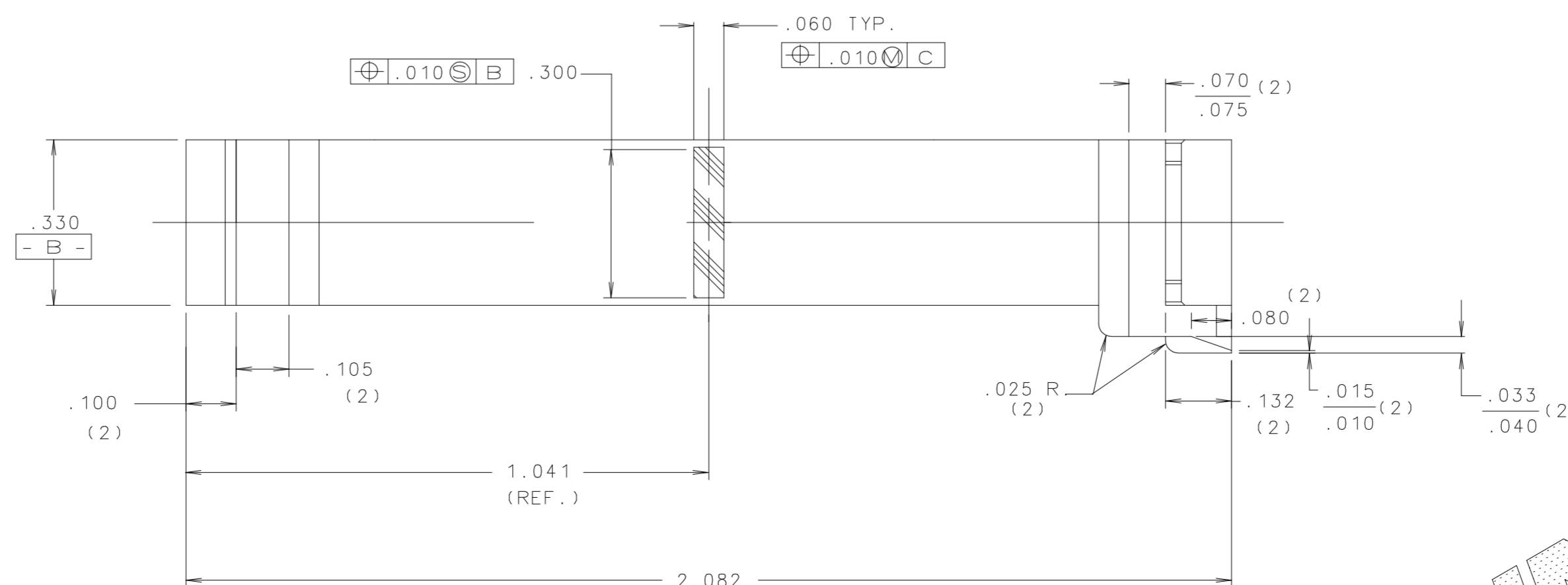


DETAIL "C"



FUSE END GUIDES NOT SHOWN IN THIS VIEW.



SECTION A-A

NOTES

- UNLESS OTHERWISE SPECIFIED:
- 1/2 DEGREE MAXIMUM DRAFT PER SIDE.
 - EJECTOR PIN MARKS TO BE FLUSH TO .008 BELOW SURFACE.
 - MAXIMUM FLASH LIMITS: .003" HEIGHT, .005" WIDTH.
 - ALL DIMENSIONS ARE TYPICAL FOR REPEATED FEATURES.
 - O END "A" & END "B" MUST BE CAPABLE TO BE SQUEEZED TO BOTTOM AND RETURN TO ITS NORMAL POSITION.
 - LETTERING: .031 HIGH GOTHIC CHARACTERS, .003/.010 RAISED.
 - ALL INTERNAL RADIUS TO BE .015 MAX.
 - PACK 5000 PCS IN -890-750 POLYETHYLENE BAG. CLOSE WITH WIRE TIE -890-471. PLACE IN BOX -580143. LABEL BOX WITH COMPUTER GENERATED LABEL -914-796 AND SEAL WITH -088120 TAPE.

LTR	DATE	REVISION	CHK	APD
A	11/12/98	07735- RELEASED	JMB	
B	08/03/07	855436-CHG MATERIAL FROM 057321 TO 057348 AND 057892	DHM	

NO	COMPONENT NO	DESCRIPTION	QTY/M	U/M
-	914-796	LABEL, BAR CODE	.2	EA
-	890-750	POLY BAG	.2	EA
-	580143	CARTON	.2	EA
-	057348	NYLON RESIN	5.726	LB
-	057892	COLOR CONCENTRATE	.117	LB

BILL OF MATERIAL

UNLESS OTHERWISE SPECIFIED, DIMENSIONS DO NOT INCLUDE PLATING.

O DENOTES OPTICAL CHARACTERISTICS.

CPK DENOTES CPK DIMENSIONS - MINIMUM CPK VALUE

CP DENOTES A CHARACTERISTIC THAT PROVIDES AN INDICATION OF PROCESS PERFORMANCE - MEASURE FOR MEASUREMENT AND TRACKING TO BE DEFINED IN THE FUSE INSPECTION INSTRUCTIONS.

CP DENOTES CP DIMENSIONS - MINIMUM CP VALUE MUST BE WITHIN THE DIMENSIONAL LIMITATIONS SHOWN ON DRAWING AND INITIALLY LOCATED TO ALLOW FOR MAXIMUM TOOL LIFE.

NO	REV	DATE	DATE	SCALE
1	9	18		
2	10	19		
3	12	20		
4	13	21		
5	14	23	JMB	DATE 11/10/98 SCALE 2:1
6	15	33	CHK	DATE SUPER DR
7	16	43	APPD	DATE RAW STK WT
8	17	53		DATE LBS/M

TOLERANCE UNLESS OTHERWISE SPECIFIED
 TWO PLACE DEC 1.01 FRACTION ±
 THREE PLACE DEC ±.005 ANGULAR ±1°

TITLE	REVISION	DRW. NO.	FINAL
FUSE INSERTER AND EXTRACTOR (STD. & MINI ATQ FUSES)	B	00970038Z	FINAL

UNCONTROLLED DOCUMENT