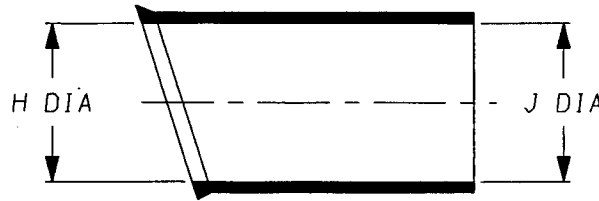
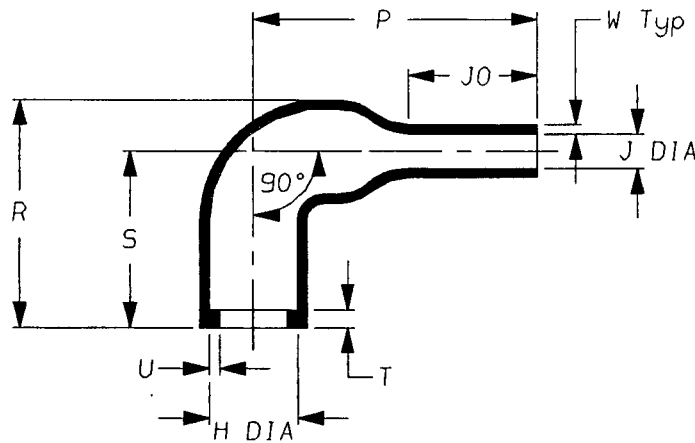


a) Part as supplied

224W142



b) Part after unrestricted recovery.



DIMENSIONS (in millimetres).

Part Number	H		J		P	R	S	T	U	J0	W
	Min	Max	Min	Max	±10%	±10%	±10%	±10%	±10%	±10%	±20%
	a	b	a	b	b	b	b	b	b	b	b
224W142	31	20.1	31	7.0	55	45.3	35	3.5	2.0	25	1.8

Copyright (!)
Urheberrechte

The copyright in this drawing is the property of Raychem Ltd. The drawing is issued on condition that it is not copied, reproduced or disclosed to a third party, either in whole or in part without the prior written consent of Raychem Ltd.

Drawn A.LILLEY. Checked *[Signature]* Issue 1 Date March 2000

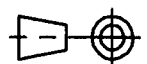
Conforms to ISO Recommendations
3rd Angle Projection
Not to Scale

Approval
Design

[Signature]

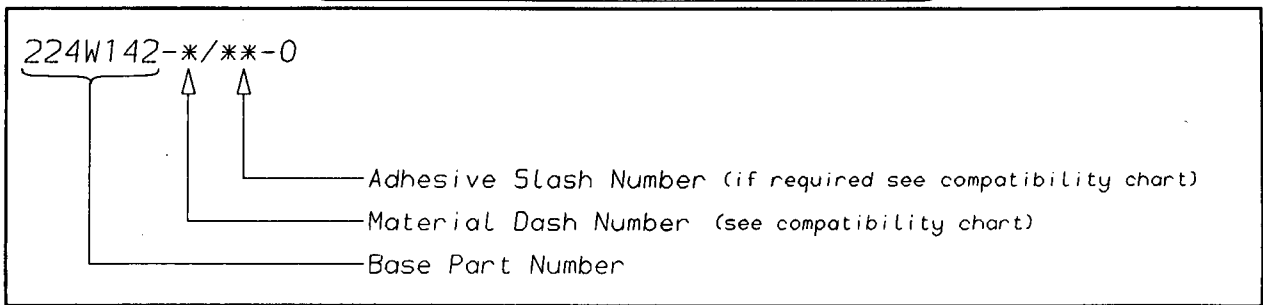
MKTG.
[Signature]

Q.A.
[Signature]



Iss.	Date	E.C.R. No.	Details of Change

Ordering Information



COMPATIBILITY CHART

MATERIAL DASH NUMBER	MATERIAL DESCRIPTION	COATING SLASH NUMBER
-3	POLYOLEFIN, SEMI-RIGID	/42, /86
-4	POLYOLEFIN, FLEXIBLE	/42, /86
-25	ELASTOMER, FLUID RESISTANT	/86, /225
-130	POLYOLEFIN, COMMERCIAL FLEXIBLE	/42, /86

AS SUPPLIED DIMENSIONS ARE FOR UNCOATED PARTS,
WHEN COATING IS ADDED, ENTRY DIAMETERS WILL REDUCE BY 1.5mm MAX.

Raychem Interconnect
 a Division of Tyco Electronics
 Swindon, Wiltshire, England. SN3 5JA
 Telephone: (01793) 528171 Fax: 572516