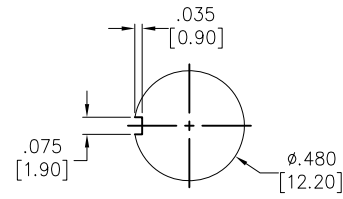
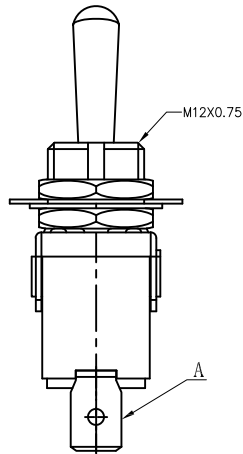
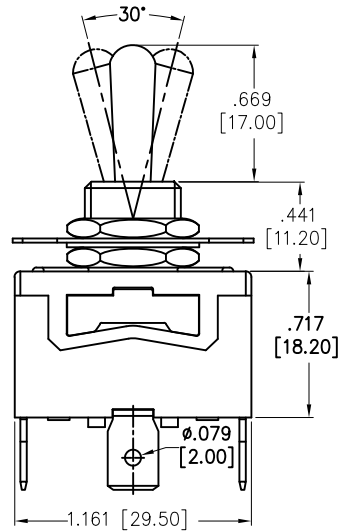
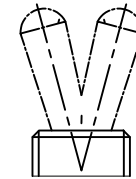


APPROVED: _____
 DATE: _____ TITLE: _____

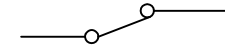
Rev	AWO #	Description	Date	Appr
-		RELEASED	8/10/21	
A		UPDATED DRAWING	6/21/22	JJ/MC
B		UPDATED SPEC	2/9/23	WX/RZ



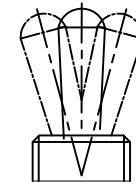
RECOMMENDED
 PANEL CUT-OUT



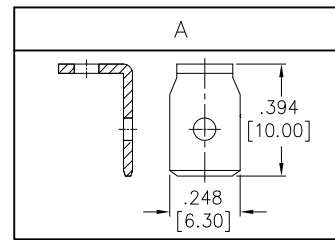
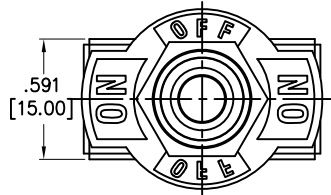
2 WAY



CIRCUIT DIAGRAM
 (SPDT)



3 WAY



- SW-T1-2X-B-K1
- B=ON-ON
 - D=ON-(ON)
 - E=ON-OFF-ON
 - F=ON-OFF-(ON)
 - G=(ON)-OFF-(ON)

SPECIFICATIONS:

Material:
 Body: Bakelite, Color: Red Brown **B**
 Lever: Brass, Nickel plated
 Terminal: Brass, Silver plated
 Electrical:
 Rating: 10A @ 250V AC
 15A @ 125V AC
 Contact resistance: 50 mΩ max
 Insulation resistance: 1000 MΩ min (500VDC)
 Dielectric withstanding voltage: 1500V AC for 1 minute
 Electrical Life: 10,000 cycles
 Temperature Rating:
 Operating temperature: -25°C to +85°C
 Environmental:
 Lead free, RoHS compliant



UNLESS OTHERWISE SPECIFIED ALL DIMENSIONS
 ARE INCHES [MM]. TOLERANCES: EXCEPT AS NOTED

INCHES	HOLES
.x ± .10	∅x ± .10
.xx ± .020	∅xx ± .015
.xxx ± .015	∅xxx ± .010



909 Rahway Avenue,
 Union, NJ 07083
 Phone: 908-687-5000
 Fax: 908-687-5710

DRAWN	WX	8/10/21
CHECKED	RC	8/10/21
APPROVED		

TITLE SWITCH, TOGGLE MEDIUM, SPDT,
 PC TERMINAL .250" [6.35MM]

THIS DRAWING CONTAINS INFORMATION THAT IS PROPRIETARY
 AND SHOULD NOT BE USED WITHOUT PRIOR WRITTEN
 PERMISSION FROM ADAM TECH

SIZE X	PART NO. SW-T1-2X-B-K1	REV. B
REF: S00206C	SCALE: NTS	SHEET 1 OF 1