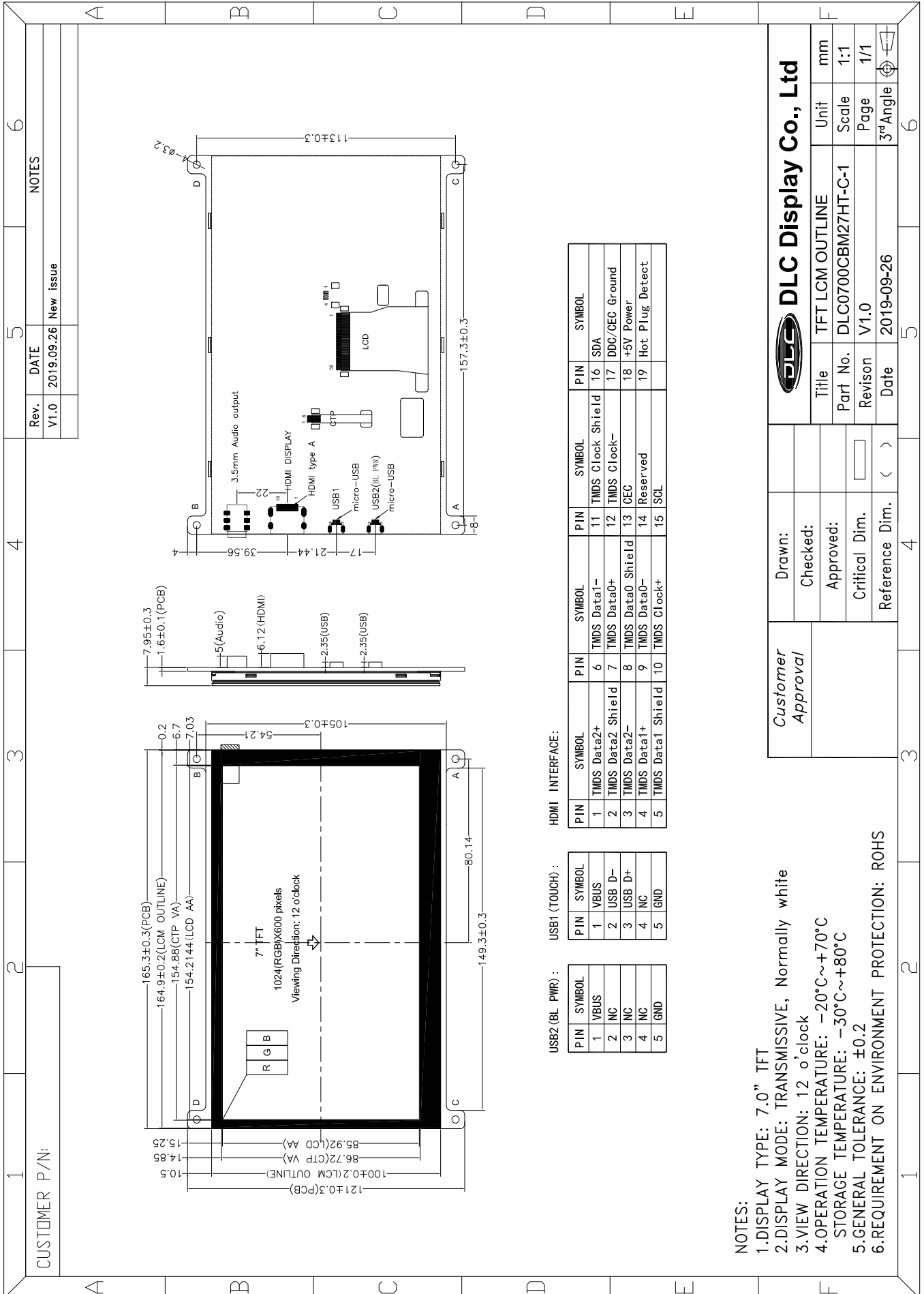


Outline Drawing



Rev.	DATE	NOTES
V1.0	2019.09.26	New issue

USB2 (BL_PWR) :

PIN	SYMBOL
1	VBUS
2	NC
3	NC
4	NC
5	GND

USB1 (TOUCH) :

PIN	SYMBOL
1	VBUS
2	USB D-
3	USB D+
4	NC
5	GND

HDMI INTERFACE :

PIN	SYMBOL	PIN	SYMBOL
1	TMDS Data2+	6	TMDS Data1-
2	TMDS Data2 Shield	7	TMDS Data0+
3	TMDS Data2-	8	TMDS Data0 Shield
4	TMDS Data1+	9	TMDS Data0-
5	TMDS Data1 Shield	10	TMDS Clock+
11	TMDS Clock Shield	16	SDA
12	TMDS Clock-	17	DDC/CEC Ground
13	CEC	18	+5V Power
14	Reserved	19	Hot Plug Detect
15	SCL		

- NOTES:
- 1.DISPLAY TYPE: 7.0" TFT
 - 2.DISPLAY MODE: TRANSMISSIVE, Normally white
 - 3.VIEW DIRECTION: 12 o'clock
 - 4.OPERATION TEMPERATURE: -20°C~+70°C
STORAGE TEMPERATURE: -30°C~+80°C
 - 5.GENERAL TOLERANCE: ±0.2
 - 6.REQUIREMENT ON ENVIRONMENT PROTECTION: ROHS

DLC Display Co., Ltd		Title	Unit
Customer Approval	Drawn:	TFT LCM OUTLINE	mm
	Checked:	DLC0700CBM27HT-C-1	Scale 1:1
	Approved:	Revision V1.0	Page 1/1
	Critical Dim.	Date 2019-09-26	3rd Angle
	Reference Dim.		