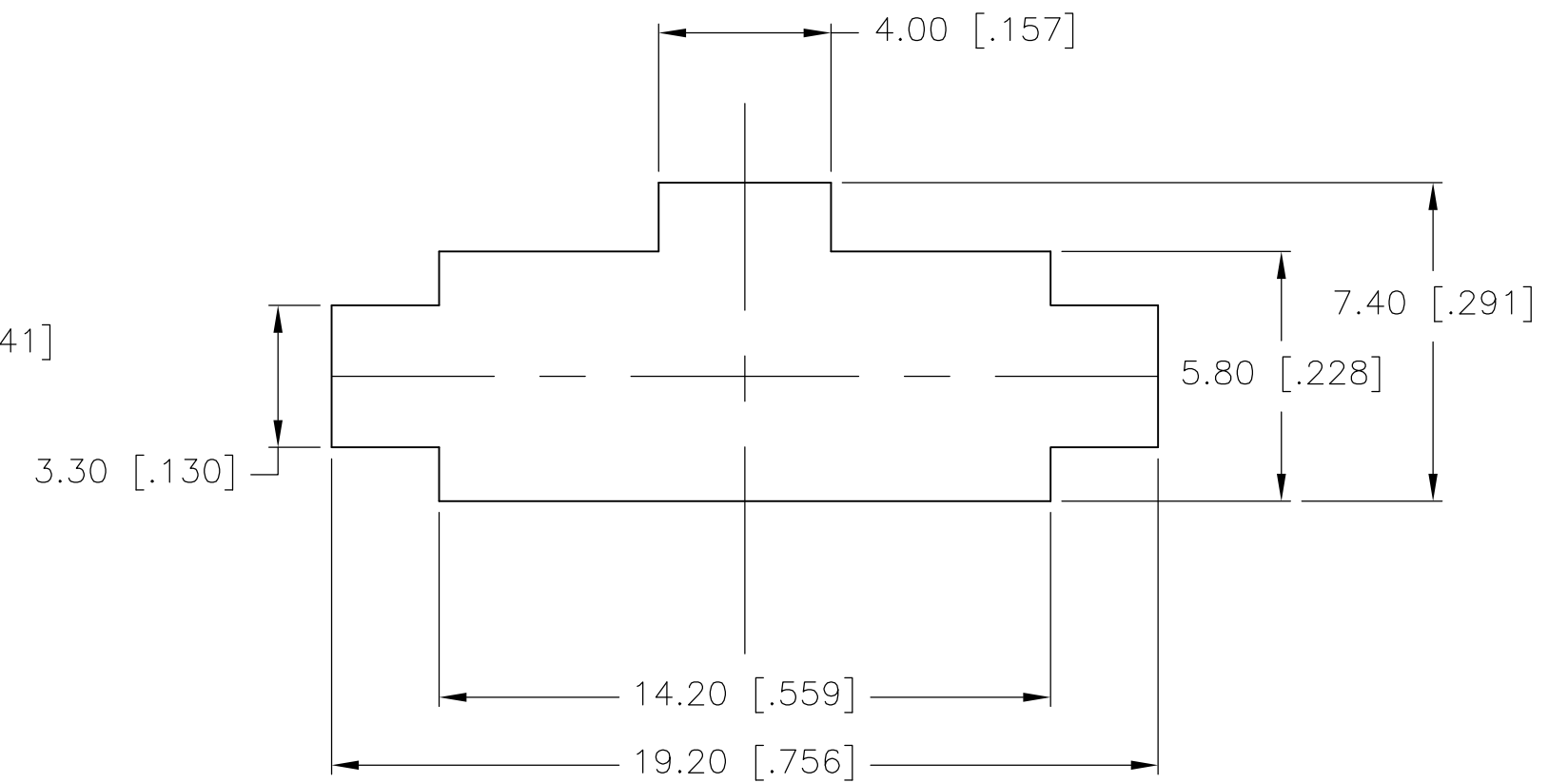
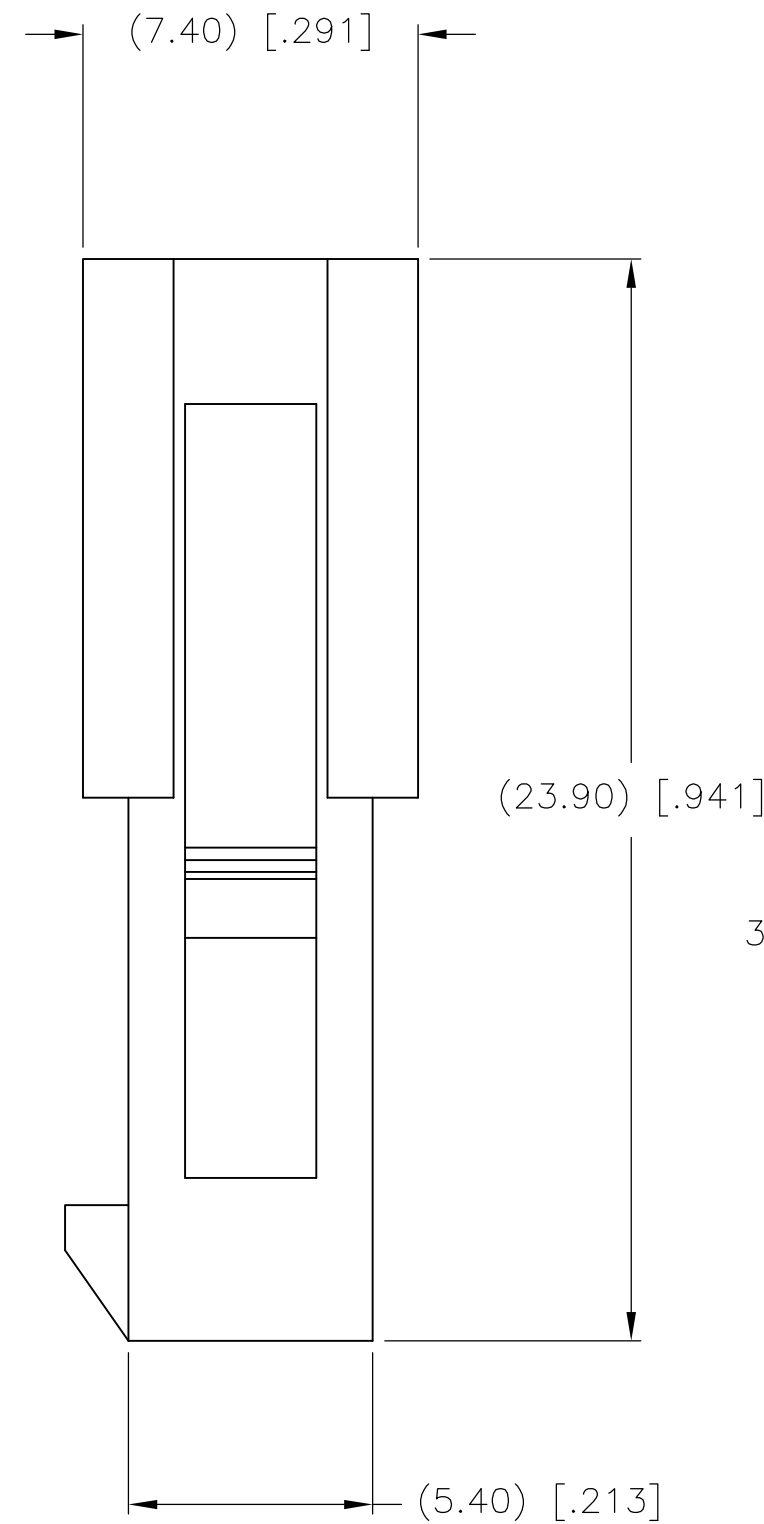
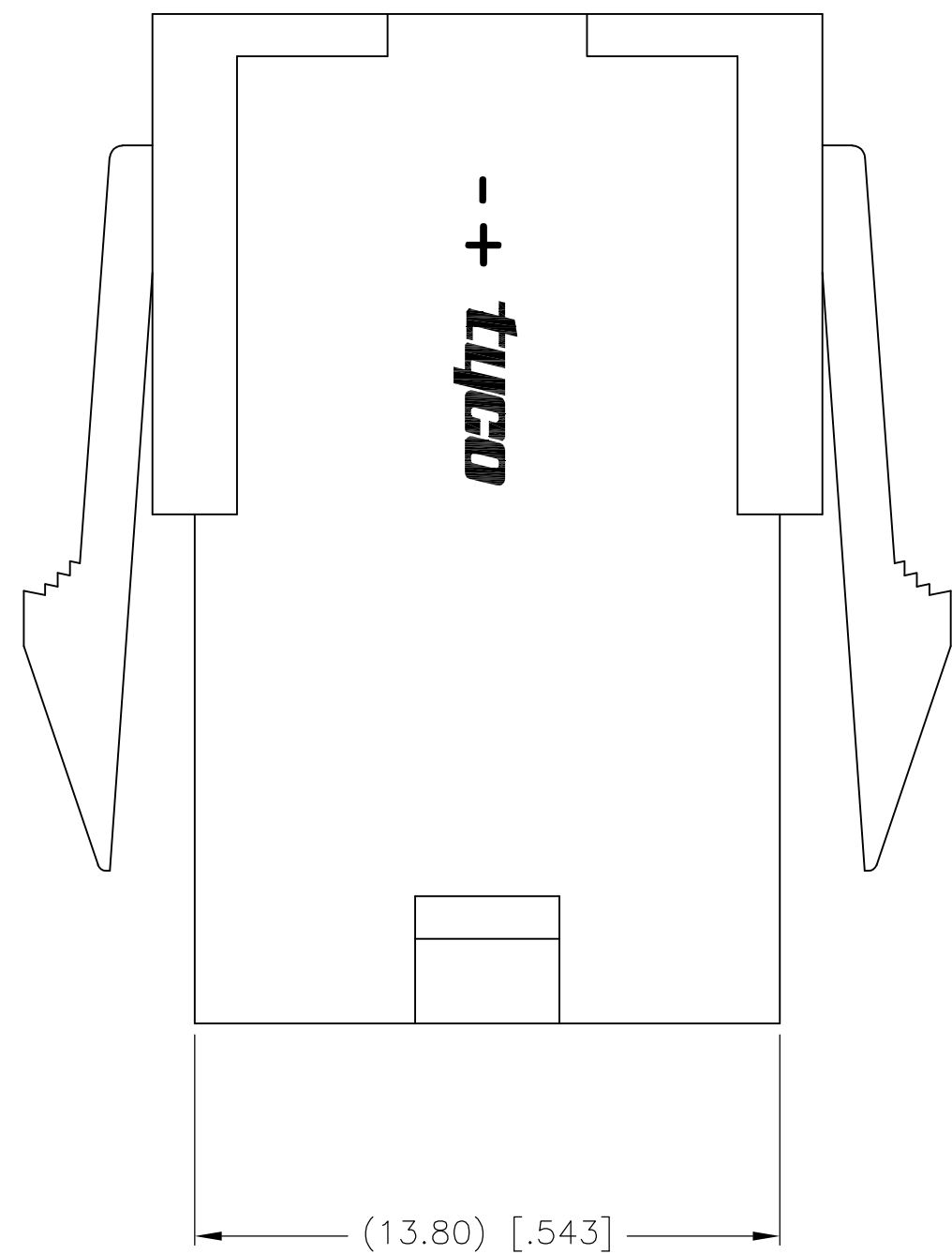
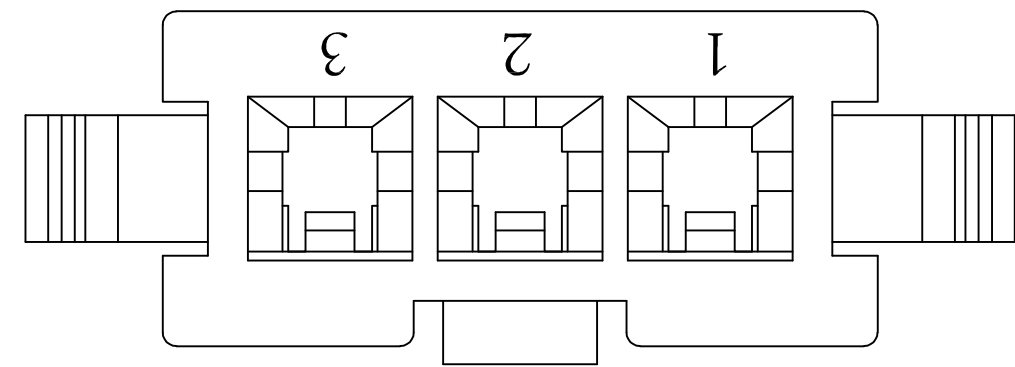


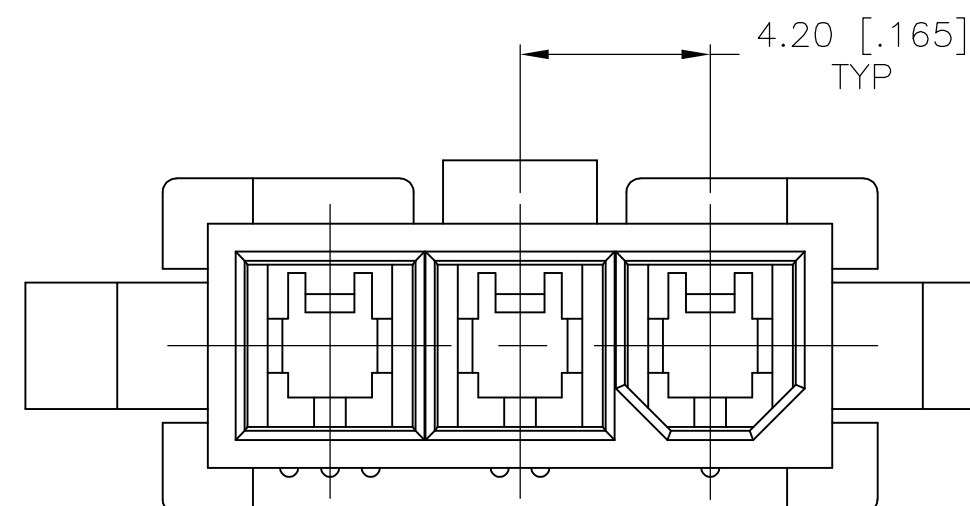
THIS DRAWING IS UNPUBLISHED. RELEASED FOR PUBLICATION
 © COPYRIGHT BY TYCO ELECTRONICS CORPORATION. ALL RIGHTS RESERVED.

LOC	DIST	REVISIONS			
P	LTR	DESCRIPTION	DATE	DWN	APVD
CM	00	A1	REVISED PER ECO-08-017870	22JUL08	HMR CC



RECOMMENDED PANEL CUT-OUT
 2.00 [.079] MAX THICK PANEL

- 1 MATERIAL: NYLON UL94V-2.
- 2 PANEL MUST BE PUNCHED SO THAT THE HOUSING ENTERS THE PANEL IN THE SAME DIRECTION AS THE PUNCH.



1586101-3
 PART NO.

METRIC

THIS DRAWING IS A CONTROLLED DOCUMENT.		DWN S. HOOVER 06-JAN-2004	Tyco Electronics Corporation Harrisburg, PA 17105-3608	
DIMENSIONS: mm [INCHES]		CHK D. COLEY 06-JAN-2004	NAME 3 POS, PLUG, V2, VAL-U-LOK(TM)	
TOLERANCES UNLESS OTHERWISE SPECIFIED: 0 PLC ± 1 PLC ± 2 PLC ± 0.13 [.005] 3 PLC ± 4 PLC ± ANGLES ± 0°30'		APVD D. COLEY 06-JAN-2004	RESTRICTED TO	
MATERIAL NYLON 66 UL94V-2		FINISH	SIZE A2	CAGE CODE 00779
		PRODUCT SPEC	DRAWING NO C=1586101	SCALE 6:1
		APPLICATION SPEC	WEIGHT	SHEET 1 of 1
		CUSTOMER DRAWING	REV A1	