



GENESIS POLYCARBONATE ENCLOSURE

Features and Benefits

- Integra's largest series of polycarbonate enclosure offering
- Light gray in color with high gloss finish
- Featuring Integra's unique "Multi-Max Rail Mounting System®" (an extremely flexible interior mounting system)
- Sturdy, full length piano hinged door
- Extra rigid construction utilizing unique internal Multi-Max frame
- Brass inserts on rear wall of enclosure and on lid for more mounting options
- Integrated mounting flanges eliminate the need to affix to the enclosure
- Available in multiple closure options: non-metallic, quarter turn or three-point latch configurations
- UL/C-UL-50 listed (File # E207562)

The Integra Genesis series represents the beginning of best medium sized non-metallic enclosures available. The unmatched flexibility of the interior of this enclosure combined with off the shelf accessories make the first of the Genesis series enclosures ideal for almost any application.

Mechanical and Thermal Test Spec.	Unit	Genesis Line
Instrumented Dart Impact @ 73° F	in/lb.	565
Falling Ball Impact @ 73° F	UL-746 in/lb.	900
Deflection Temperature @ 264 psi	ASTM D648 Deg. F	270
Modulus of Elasticity	m ASTM D790 ksi	340
Temperature Range	Deg. F	-40 to 265

Flammable / UV Ratings Test Spec.	Unit	Genesis Line
Flame Rating - UL	UL 94	- 5VA
Outdoor UV Exposure	UL	- F1

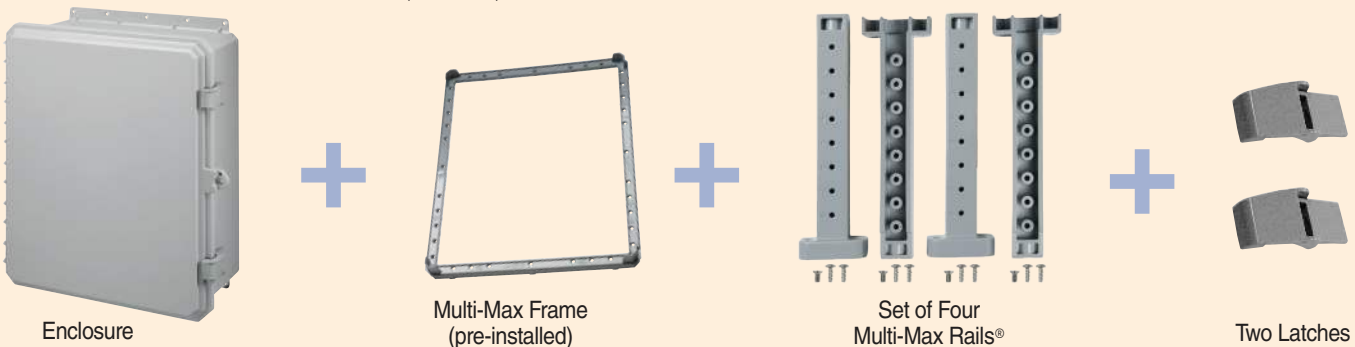


201608 P/N	4X IP66	6P IP68	Hinged Cover	Opaque Cover	Clear Cover	Integrated Mounting Flange	Non-Metallic Locking Latch	Multi-Max Rail System®	3-Point Latch	1/4 Turn Latch
G201608	✓	✓	✓	✓		✓	✓	✓		
G201608C	✓	✓	✓		✓	✓	✓	✓		
G201608TPL	✓		✓	✓		✓		✓	✓	
G201608CTPL	✓		✓		✓	✓		✓	✓	
G201608QTL	✓		✓	✓		✓		✓		✓
G201608CQTL	✓		✓		✓	✓		✓		✓
G201608E	✓	✓	✓	✓		✓	✓			
G201608CE	✓	✓	✓		✓	✓	✓			

Part numbers containing -E exclude Multi-Max Frame and Multi-Max Rail System®

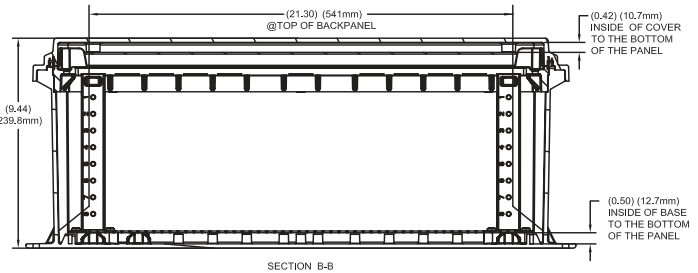
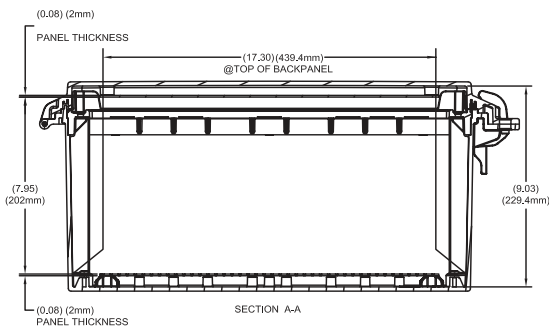
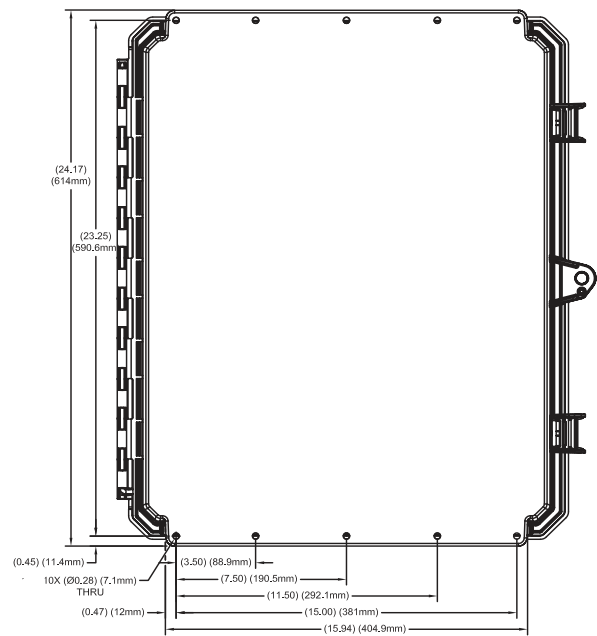
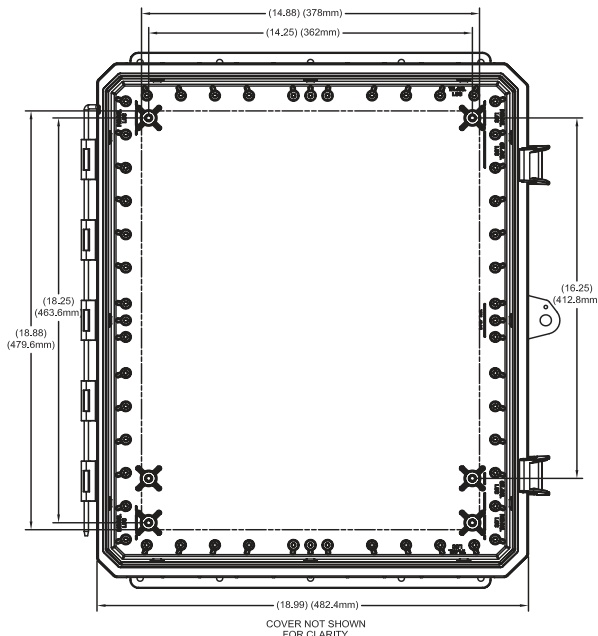
G201608 includes the following

Enclosure, Multi-Max Frame, Set of Four Multi-Max Rails® (with Screws), and Two Latches





20X16X08 GENESIS LINE



Register online to download this drawing off the Integra website at www.integraenclosures.com | Your company's logo or other information on the lid. Consult factory for details.

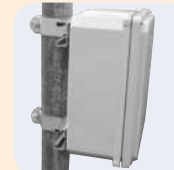
Accessories for 20x16x08 Genesis (For complete accessories, see pages 82-83)



Multi-Max Rails®
KIT-GMMR8 - Four
 Multi-Max Rails® with
 screws included



Panel Pads
KIT-GPP-2016
 Includes four
 panel pads
 and screws



Pole Mounting Kits
PMKG-216-GEN - 2" pole
PMKG-316-GEN - 3" pole
PMKG-416-GEN - 4" pole
PMKG-1216-GEN - 12" pole



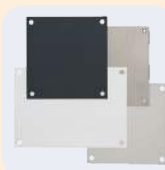
Door Stop Kit
KIT-DOOR-STOP - Door
 Stop Kit for Genesis
 Enclosures



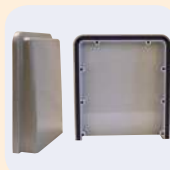
Self-Tapping Screws
GSP-10 - Self-tapping
 screws for bosses (10
 per pack)



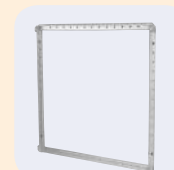
Swing Out Panel System
ABP2016-GSOPK - Aluminum
 swing panel includes
 ABP2016 and GSOPK20
SBP2016-GSOPK - Steel
 swing panel includes
 SBP2016 and GSOPK20
GSOPK20 - 20" hinge, panel
 pads and screws (panel
 not included)



Back and Swing Panels
ABP-2016 - Aluminum
 panel
SBP-2016 - Steel panel
PVCBP-2016 - PVC panel



Fan Shroud Kits
FS-KIT-1 - One shroud
 with gasket and screws
FS-KIT-2 - Two shrouds
 with gasket and screws



Multi-Max Frame
GSR2016 - Multi-Max
 frame support ring