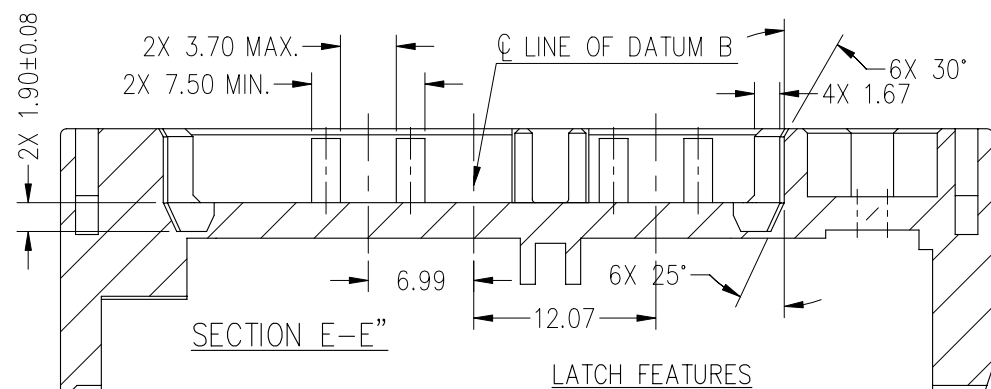
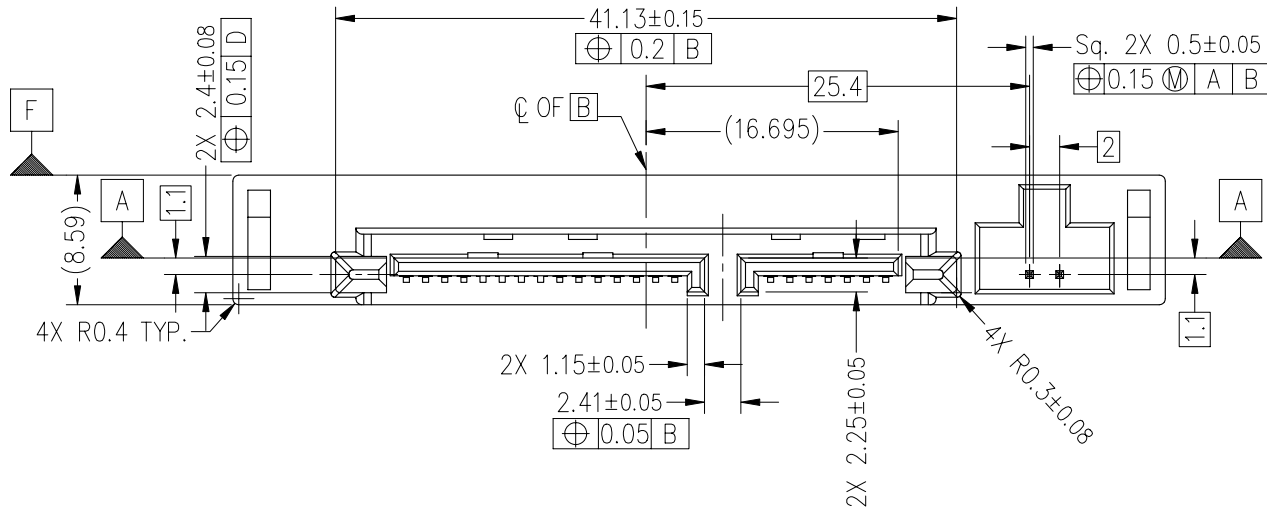
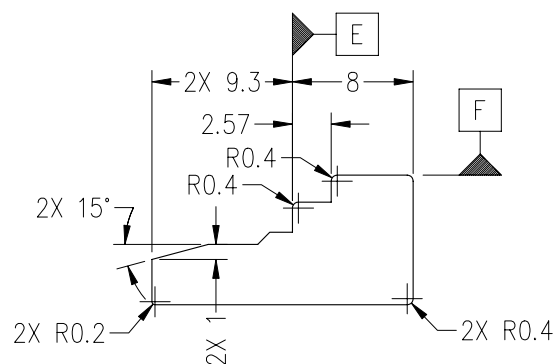
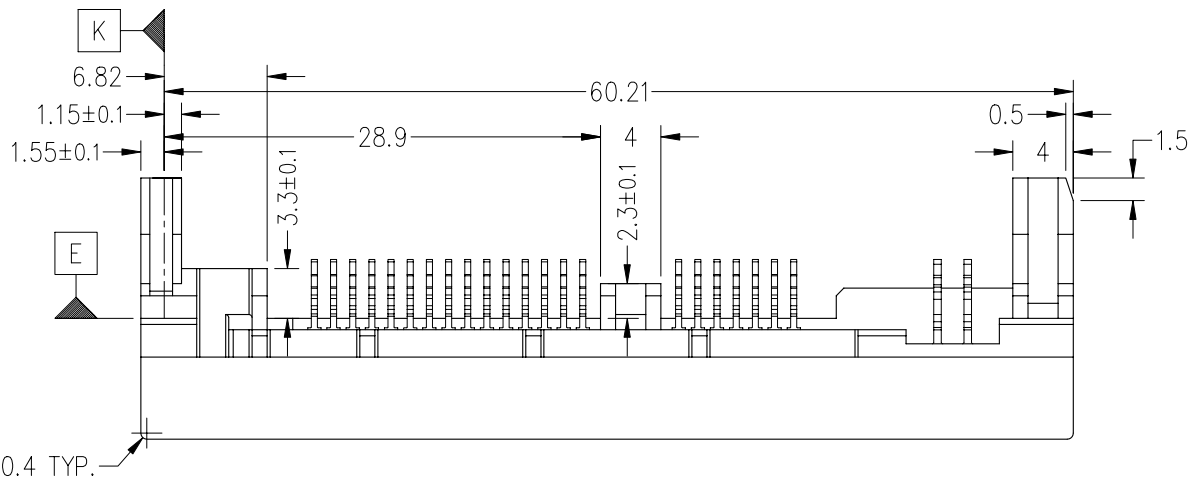
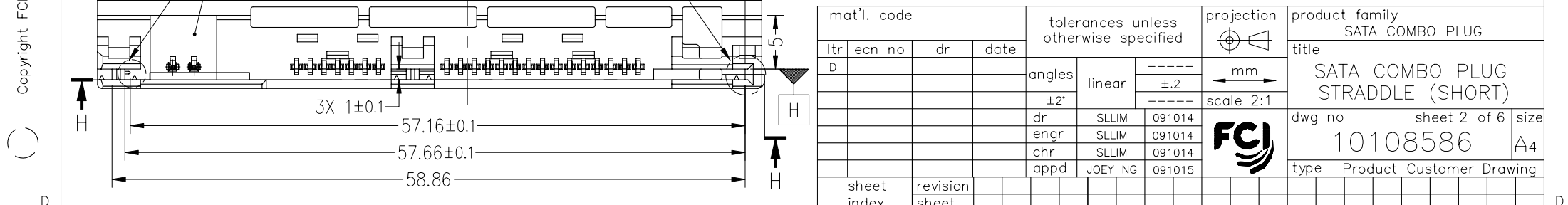
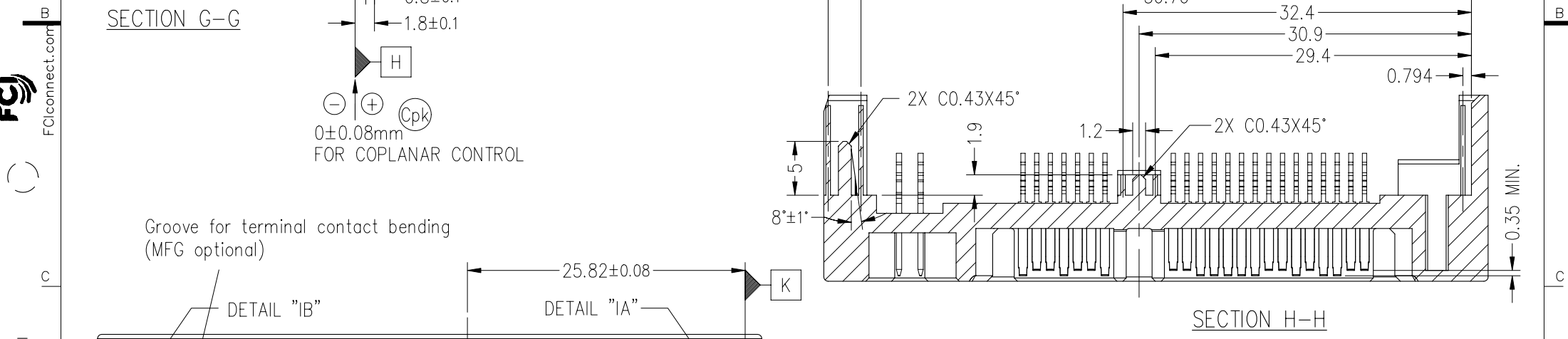
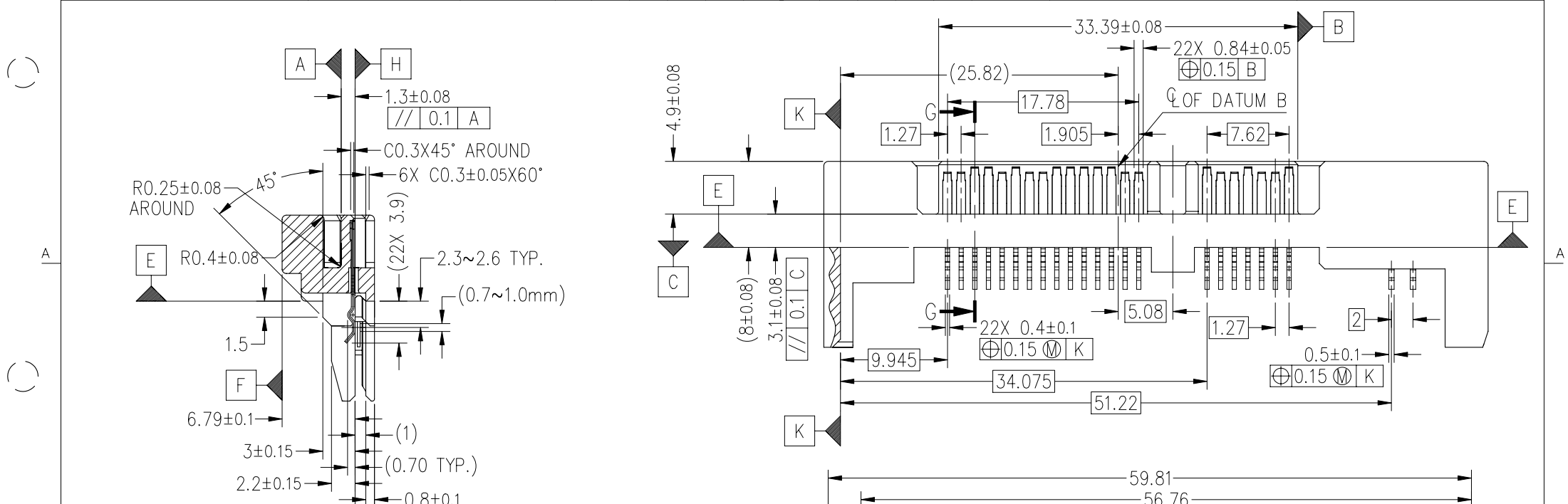


PRODUCT PART NO.

10108586-001LF



| | | | | | | | | | |
|-----------------------|--|----------------|--|---------------------------------------|---|---|-------------------------------|----------------------------------|--|
| mat'l. code | | | | tolerances unless otherwise specified | | | projection | product family | |
| S10-0049 SLLIM 100309 | | | | angles | | | mm | SATA COMBO PLUG | |
| S10-0101 SLLIM 100607 | | | | linear | | | | title | |
| S10-0137 SLLIM 100701 | | | | ±2' | | | scale 2:1 | SATA COMBO PLUG STRADDLE (SHORT) | |
| S10-0203 SLLIM 100920 | | | | dr SLLIM 091014 | | | | dwg no | |
| | | | | enr SLLIM 091014 | | | sheet 1 of 6 | | |
| | | | | chr SLLIM 091014 | | | size | | |
| | | | | appd JOEY NG 091015 | | | A4 | | |
| | | | | | | | type Product Customer Drawing | | |
| sheet index | | revision sheet | | D | D | D | D | D | |
| 1 | | 2 | | 3 | 4 | 5 | 6 | | |

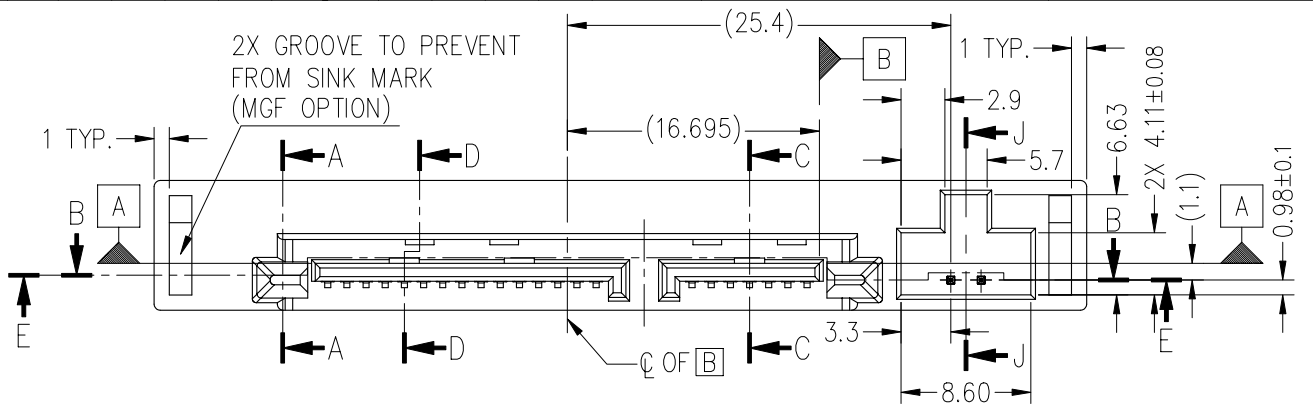
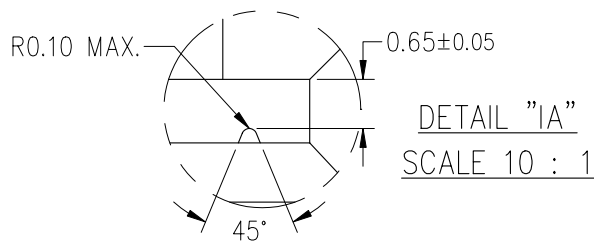


FCIconnect.com



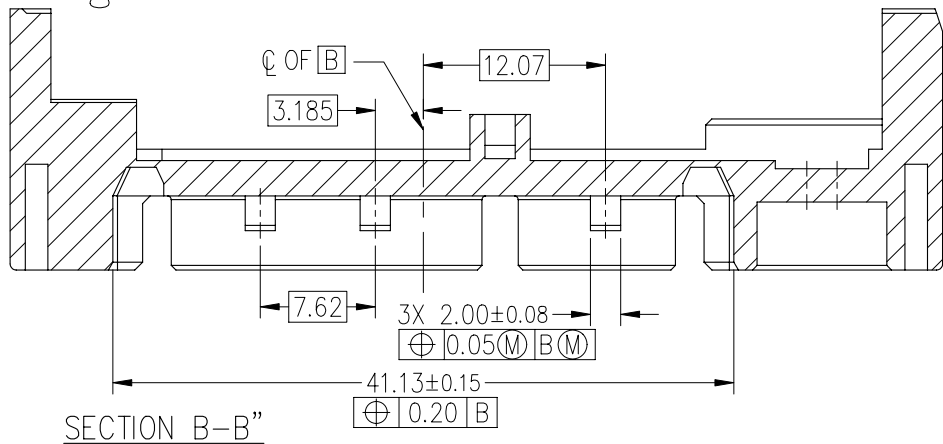
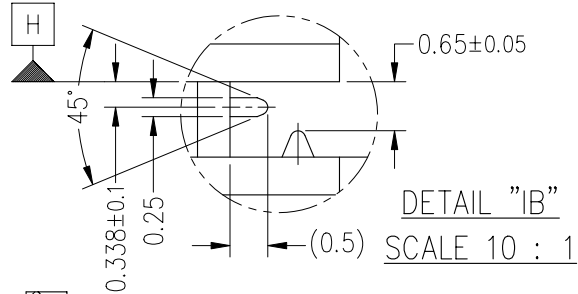
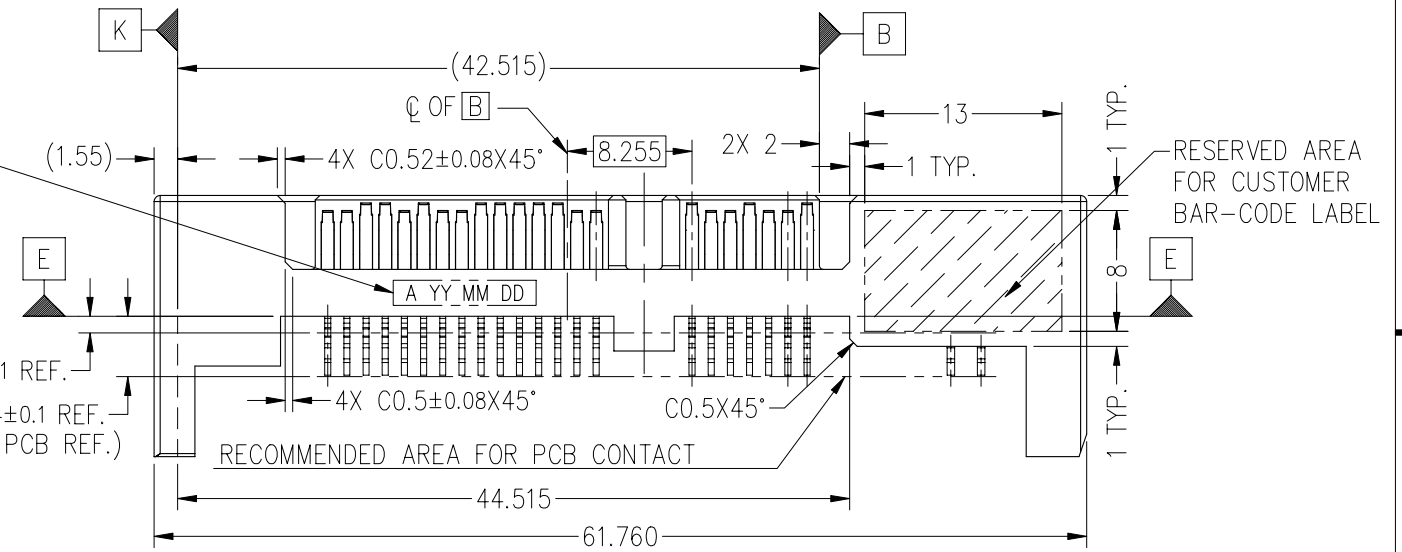
Copyright FCI

| | | | | | | | | | |
|-------------|----------------|----|------|---------------------------------------|---------|-----------|----------------------------------|----------------|------|
| mat'l. code | | | | tolerances unless otherwise specified | | | projection | product family | |
| ltr | ecn no | dr | date | angles | linear | mm | SATA COMBO PLUG | | |
| D | | | | | | | title | | |
| | | | | ±2' | | scale 2:1 | SATA COMBO PLUG STRADDLE (SHORT) | | |
| | | | | dr | SLCIM | 091014 | dwg no | sheet 2 of 6 | size |
| | | | | enr | SLCIM | 091014 | 10108586 | A4 | |
| | | | | chr | SLCIM | 091014 | type Product Customer Drawing | | |
| | | | | appd | JOEY NG | 091015 | | | |
| sheet index | revision sheet | | | | | | | | |



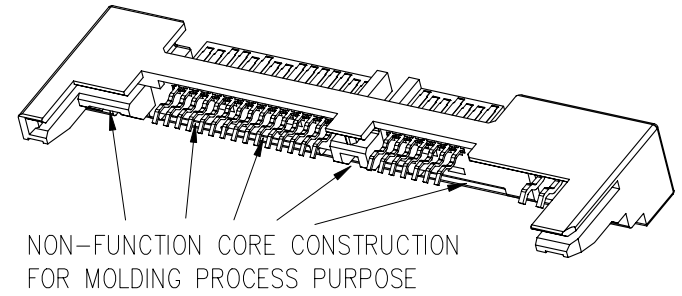
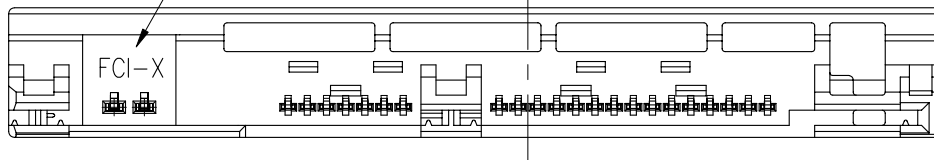
NOTE [4] RESERVED AREA FOR ASSY. DATE-CODE
DATE CODE APPROX. AS SHOWN

A: MACHINE
YY: YEAR
MM: MONTH
DD: DATE

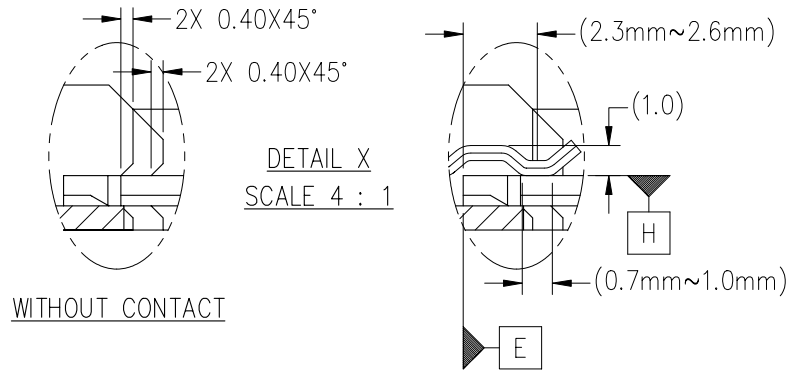


| | | | | | | | | | | | |
|-------------|--------|----------------|------|---------------------------------------|---------|--------|------------|-------------------------------------|--|--------------|------|
| mat'l. code | | | | tolerances unless otherwise specified | | | projection | product family SATA COMBO PLUG | | | |
| ltr | ecn no | dr | date | angles ±2' | linear | mm | scale 2:1 | title | | | |
| D | | | | | | | | SATA COMBO PLUG STRADDLE (SHORT) | | | |
| | | | | dr | SLIM | 091014 | | dwg no | | sheet 3 of 6 | size |
| | | | | enr | SLIM | 091014 | | 10108586 | | A4 | |
| | | | | chr | SLIM | 091014 | | type Product Customer Drawing | | | |
| | | | | appd | JOEY NG | 091015 | | | | | |
| sheet index | | revision sheet | | | | | | | | | |

NOTE 4: FCI LOGO & CAVITY "X" RUNNING NUMBER
 ("X" = A, B, C, D, E, F, G, H, J, K, L, M, N, P, Q, R)

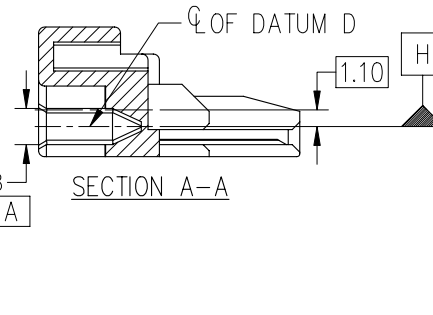


NON-FUNCTION CORE CONSTRUCTION FOR MOLDING PROCESS PURPOSE

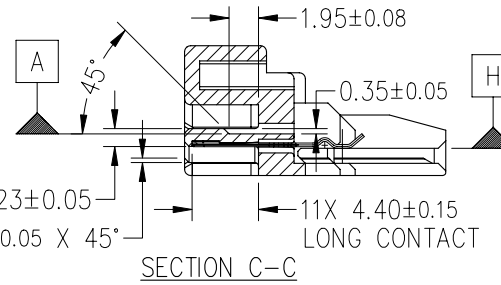


DETAIL X
SCALE 4 : 1

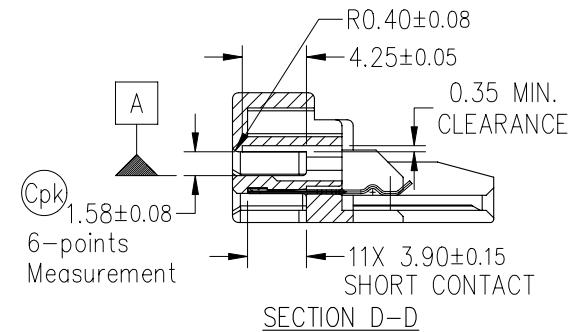
WITHOUT CONTACT



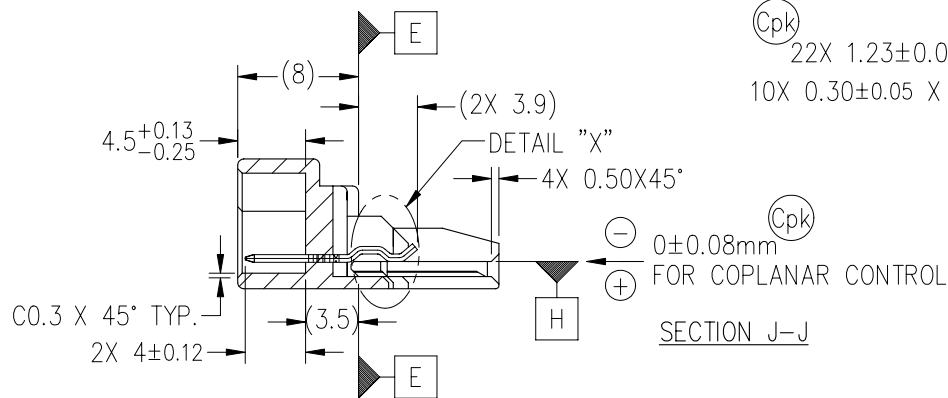
SECTION A-A



SECTION C-C

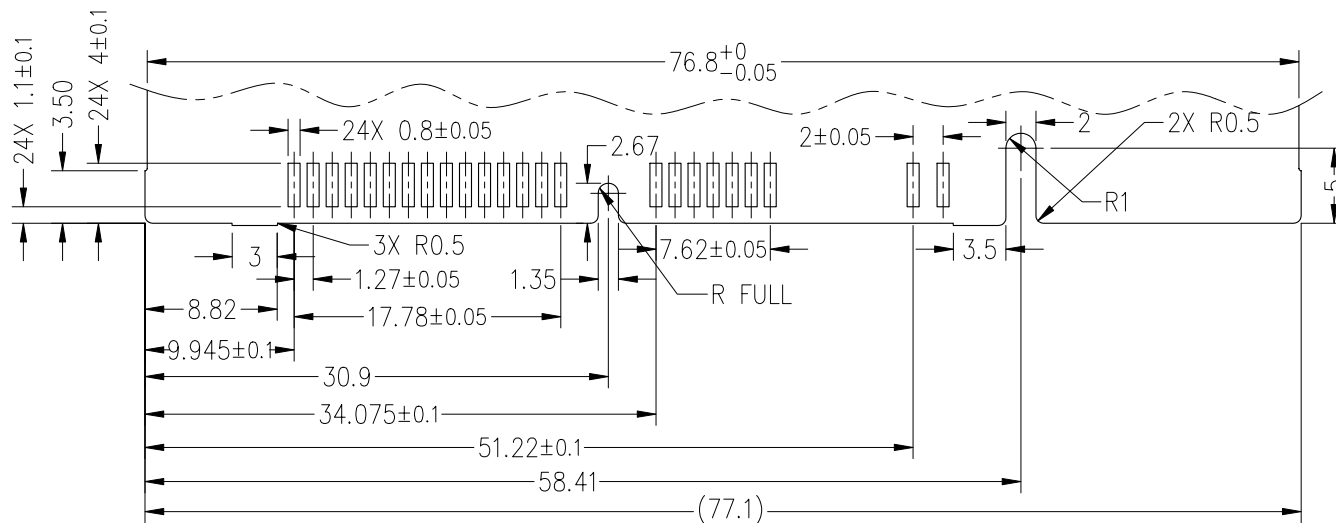


SECTION D-D



SECTION J-J

| | | | | | | | | | |
|-------------|--------|----------------|------|---------------------------------------|---------|-----------|----------------------------------|----------------|------|
| mat'l. code | | | | tolerances unless otherwise specified | | | projection | product family | |
| ltr | ecn no | dr | date | angles ±2' | linear | mm | SATA COMBO PLUG | | |
| D | | | | | | | title | | |
| | | | | | | scale 2:1 | SATA COMBO PLUG STRADDLE (SHORT) | | |
| | | | | dr | SLLIM | 091014 | dwg no | sheet 4 of 6 | size |
| | | | | enr | SLLIM | 091014 | 10108586 | A4 | |
| | | | | chr | SLLIM | 091014 | type Product Customer Drawing | | |
| | | | | appd | JOEY NG | 091014 | | | |
| sheet index | | revision sheet | | | | | | | |



RECOMMENDED PC BOARD LAYOUT

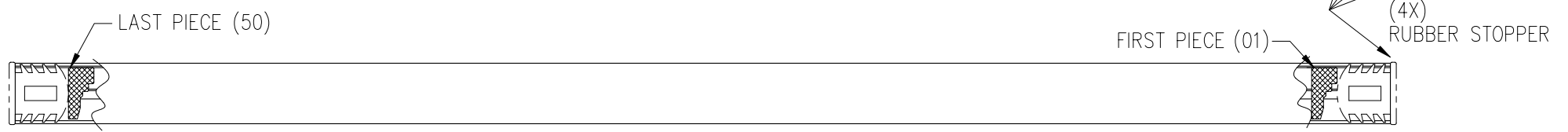
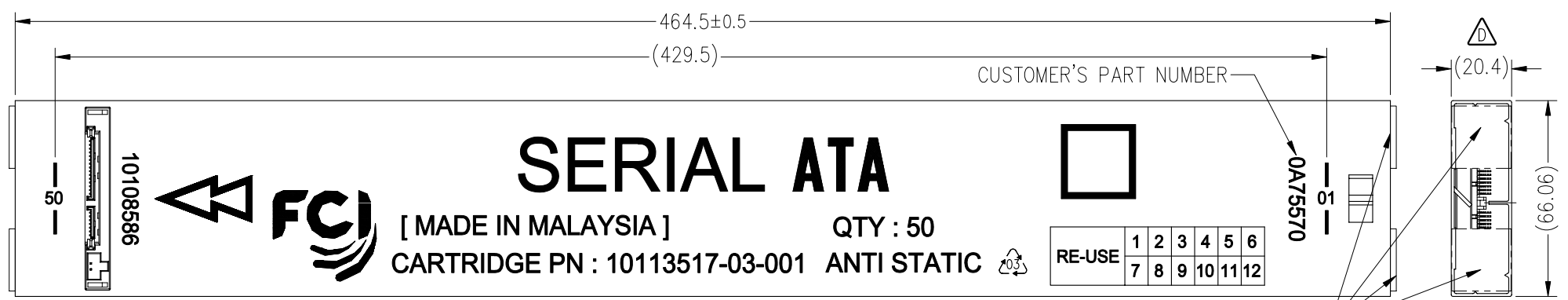
BOARD THICKNESS 0.796mm

NOTES :

1. MATERIAL:
 - A. HOUSING:
LCP MATERIAL, UL94V-0, COLOR: BLACK.
 - B. SATA TERMINAL: COPPER ALLOY.
 - C. JUMPER PIN: COPPER ALLOY.
2. FINISH:
 - A. SATA SIGNAL AND POWER PINS: (MATING SIDE)
1.27um [50u"] MINIMUM, 2.54um [100u"] MAXIMUM NICKEL UNDER PLATE WITH 0.05um [2u"] MINIMUM GOLD IN CONTACT AREA.
 - B. JUMPER PIN (MATING SIDE)
1.27um [50u"] MINIMUM, 2.54um [100u"] MAXIMUM NICKEL UNDER PLATE WITH 0.05um [2u"] MINIMUM GOLD IN CONTACT AREA.
 - C. ALL SOLDER TAILS (SATA AND JUMPER):
1.27um [50u"] MINIMUM, 2.54um [100u"] MAXIMUM NICKEL UNDER PLATE WITH 1.91um [75u"] MINIMUM PURE TIN IN CONTACT AREA.
 - D. LUBRICANT (C-9030) IS APPLIED ON THE CONTACT AREA AFTER PLATING.
3. DATUM [A] IS DEFINED AS THE TOP PORTION OF THE BLADE SURFACE.

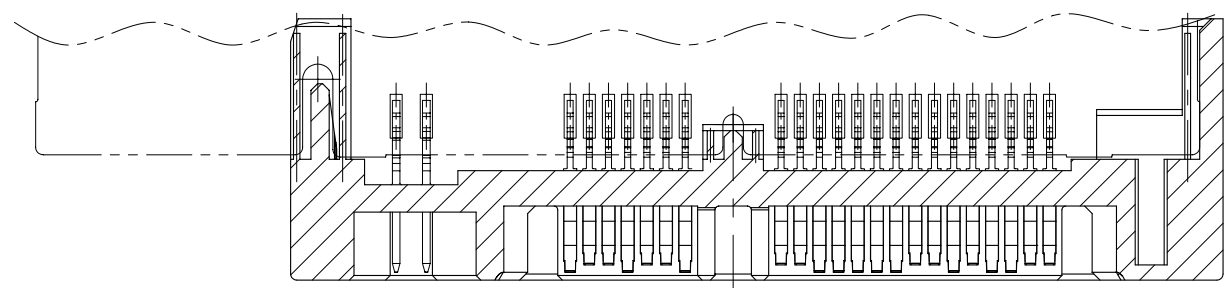
4. PART MARKING: MANUFACTURE NAME, LOGO AND / OR DATE CODE SHALL BE MARKED THE SURFACE OF THE CONNECTOR APPROXIMATELY WHERE SHOWN.
5. ALTERNATE CORING AND RIB CONSTRUCTION FOR MOLDING PROCESS.
6. THIS PRODUCT MEETS EUROPEAN UNION DIRECTIVES AND OTHER COUNTRY REGULATIONS AS DESCRIBED IN GS-22-008 .
7. A \triangle SYMBOL WILL BE NEXT TO ANY DIMENSION, NEW VIEW, OR NOTE WHICH HAS BEEN MODIFIED WITH THE CURRENT DRAWING REVISION.
8. UNLESS OTHERWISE SPECIFIED, TYPICAL WALL THICKNESS (1.0 mm).
9. INTERPRET DIMENSION ACCORDING TO ASME Y14.4M - 1994.

| | | | | | | | | | | | |
|-----------------|--------|----------------|------|---------------------------------------|---------|-----------|--------------------------|----------------------------------|--------------|------|--|
| mat'l. code | | | | tolerances unless otherwise specified | | | projection | product family | | | |
| SATA COMBO PLUG | | | | | | | | SATA COMBO PLUG | | | |
| ltr | ecn no | dr | date | | | mm | | title | | | |
| D | | | | angles | linear | | ±.2 | SATA COMBO PLUG STRADDLE (SHORT) | | | |
| | | | | ±2' | | scale 2:1 | dwg no | | | | |
| | | | | dr | SLLIM | 091014 | 10108586 | | sheet 5 of 6 | size | |
| | | | | enrg | SLLIM | 091014 | A4 | | | | |
| | | | | chr | SLLIM | 091014 | Product Customer Drawing | | | | |
| | | | | appd | JOEY NG | 091014 | | | | | |
| sheet index | | revision sheet | | | | | | | | | |



RECOMMENDED CONNECTOR TUBE LAYOUT

* PACKING SIZE: 50 CONNECTORS PER CARTRIDGE TUBE



RECOMMENDED PC-BOARD LAYOUT

| | | | | | | | | | |
|-------------|--------|----------------|------|---------------------------------------|---------|--------|------------|----------------------------------|--|
| mat'l. code | | | | tolerances unless otherwise specified | | | projection | product family | |
| ltr | ecn no | dr | date | angles | | linear | mm | SATA COMBO PLUG | |
| D | | | | ±2' | ±.2 | | | title | |
| | | | | dr | SLLIM | 091014 | scale 2:1 | SATA COMBO PLUG STRADDLE (SHORT) | |
| | | | | chr | SLLIM | 091014 | | dwg no sheet 6 of 6 size | |
| | | | | appd | JOEY NG | 091014 | | 10108586 A4 | |
| | | | | | | | | type Product Customer Drawing | |
| sheet index | | revision sheet | | | | | | | |

Copyright FCI
FCIconnect.com