



Electrical specifications

Center Frequency: 942.5 MHz
Bandwidth: 35 MHz
VSWR: 2.0 : 1 min
Input / Output Impedance: 50 Ohms
Passband: 925-960 MHz
Passband Insertion Loss: 3.2 dB max
Passband Ripple: 1.5 dB max
Rejection: 25 dB min at 750.2-785.2 MHz
Rejection 2: 10 dB min at 880-915 MHz
Rejection 3: 20 dB min at 1304.2-1339.2 MHz
Rejection 4: 50 dB min at 1479-1514 MHz
Rejection 5: 25 dB min at 735.4-770.4 MHz
Rejection 6 : 60 dB min at 572.4-761 MHz
Rejection 7: 50 dB min at 726.4-761 MHz
Rejection 8: 60 dB min at 608 MHz
Rejection 9: 60 dB min at 371-406 MHz
Rejection 10: 60 dB min at 545.8-580.8 MHz
Rejection 11: 45 dB min at 1099.8-1134.8 MHz
Power Handling: 3 Watt max

Mechanical

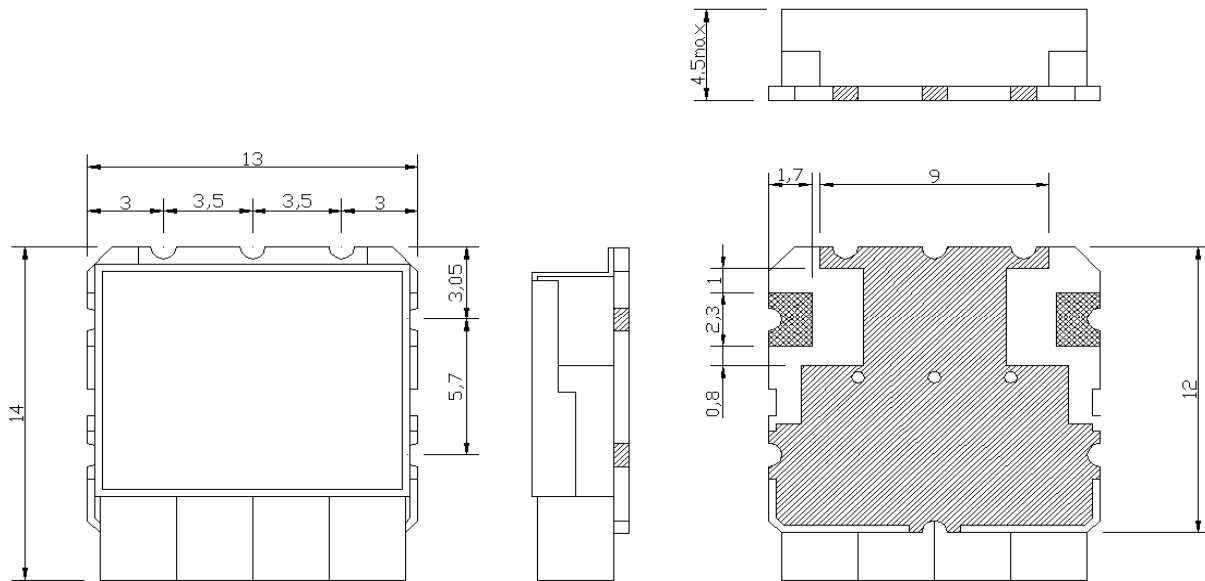
Mounting Method: SMT
Dimensions: 14mm x 13mm x 4.5mm

Environmental

Operating Temperature: -20°C to 70°C
Storage Temperature: -50°C to +90°C

This product is RoHs compliant.

Outline Drawing:



Unit:mm
Tolerance:±0.3