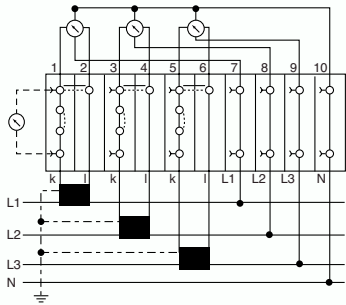


Disconnect Terminals

Slide link disconnect terminals offer a superior solution for simple current transformer circuits and measurement transformer test sets using SAKT 1/LT lateral disconnect terminals, or SAKT 1/DU feed through terminals and SAKT 1/QT cross disconnect terminals.

Current transformers must always have a closed secondary circuit, even when changing measuring equipment (see schematic below).



Stationary Jumpers

QL jumpers serve as fixed cross-connections for the Disconnect Terminals. The QL jumpers require the use of a fixing screw (BS M) and a connection sleeve (VH) when attaching the jumper to the current bar. The QVQ jumpers are provided with a retained jumper screw.

Sliding Jumpers

QS and QVS jumpers are sliding jumpers. These jumpers are used to temporarily connect or disconnect adjacent terminal blocks. When the jumper screws are loose, the jumper can move to either open or close the cross connection between blocks. Tightening the jumper screws holds the jumper in either the open (disconnected) or closed (shorted) position.

QB jumpers work in a similar manner except that the jumpers remain fixed. An internal sliding connection link connected to the current bar either opens or closes the connection based on whether the link is in contact with the jumper or not.

SSP disconnect locks snap into the terminal block. These locks must be removed to change the position of the sliding link connection.

Terminal Block Selection Data

Available Options	Version	SAKT 1/LT		SAKT 2/LT	
	PA	Slide Link		Slide Link	
	2 StB test points PA				
	Back wall closed KrG	0105660000			
	Back wall open KrG	0269120000 0105420000		0445420000	
	4 StB 14 test points ø4.0 KrG 60 V**			0437720000 0106020000	
	1 StB 8.5 test point ø2.0 KrG				
	1 StB 8.5 test point ø2.3 KrG				
	2 StB 14 test points ø4 KrG	0437920000 0105620000		0330620000 0105920000	
	2 StB 14 test points ø2.3 KrG				

Dimensions

Width / Length / Height mm (in.)	for TS 32	8/65/52.5 (.31/2.56/2.07)	8/82/52.5 (.31/3.23/2.07)
	for TS 35	8/65/48.5 (.31/2.56/1.91)	8/82/48.5 (.31/3.23/1.91)
Insulation stripping length	mm (in.)	12 (.47)	12 (.47)

Technical Data

Rated voltage / rated current / wire size	UL	300 V / 25 A / #22...8 AWG*	300 V / 25 A / #22...8 AWG*
	CSA	300 V / 25 A / #26...8 AWG	300 V / 25 A / #26...8 AWG
	VDE	380 VAC / 27 A / 6 mm ²	380 VAC / 27 A / 6 mm ²
Torque	Nm (lb. in.)	1.7 (16)	1.7 (16)
Clamping screw	M	3.5	3.5

Selected Accessory Data†

End Plate (thickness mm)	Type	Part No.	Type	Part No.
	PA	AP (1.5) 0146760000	AP (1.5)	0146760000
	KrG	AP (3.0) 0146720000	AP (1.5)	0329120000
Partition (thickness mm)				
	PA	TW (1.5) 0242960000	TW (1.5)	0242960000
	KrG	TW (3.0) 0242920000	TW (2.5)	0351820000
	HP	TW (0.5) 0474700000	TW (0.5)	0474700000
Small Partition				
	TSch 2	0353660000	TSch 2	0353660000
Jumpers				
	QL fixed	QL 2 0194300000	QL 2	0194300000
	QVS sliding	QL 3 0194400000	QL 3	0194400000
	Connection sleeve	QL 4 0194500000	QL 4	0194500000
	Fixing screw	QL 10 0338300000	QL 10	0338300000
		VH 12 0249000000	VH 12	0249000000
		BS M 3 x 20 Cu 0377100000	BS M 3 x 20 Cu	0377100000
		QS 2 0270960000	QS 2	0270960000
		QVS 2 0307300000	QVS 2	0307300000
		QVS 3 0329300000	QVS 3	0329300000
		QVS 4 0307400000	QVS 4	0307400000
		VH 19 0318000000	VH 19	0318000000
		BS 25 bare 0334700000	BS 25 bare	0334700000
Switchable Jumper Links				
	QB 2	0205700000	QB 2	0205700000
	QB 3	0205800000	QB 3	0205800000
	QB 4	0205900000	QB 4	0205900000
	QB 10	0343800000	QB 10	0343800000
Test Plugs				
		PS 4 0299600000	PS 4	0299600000
Disconnect Lock				
		SSP 3 0531760000	SSP 3	0531760000
Marking Tags				
	Print			
Note: Part numbers are shown for a single card of pre-printed tags numbered 1-50.	Consecutive horizontal	DEK 5/6 0468660001	DEK 5/6	0468660001
	Consecutive vertical	DEK 5/6 0468760001	DEK 5/6	0468760001

Final number indicates number of poles. See the Accessories Section for more information.

Connection sleeve
Fixing screw



Test Plugs

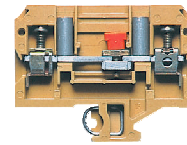
Disconnect Lock

Marking Tags

Note: Part numbers are shown for a single card of pre-printed tags numbered 1-50.

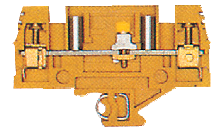
Consecutive horizontal
Consecutive vertical

SAKT 1/LT



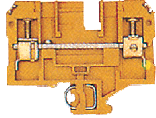
Slide Link

SAKT 2/LT

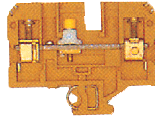


Slide Link

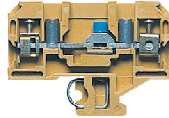
SAKT 1/DU



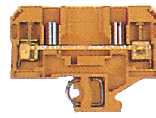
SAKT 1/QT



SAKT 4/LT



SAKT 4/DU



Feed Through

Cross Disconnect

Slide Link

Feed Through

Feed Through		Cross Disconnect		Slide Link		Feed Through	
0105860000		0105760000					
0550420000		0494820000	0124620000	0254120000	1272420000	0246320000	
0195620000	0105820000	0269320000	0105720000				
				0254220000 StB left		0246420000 StB left	
				0310320000*** 1272520000***			
				0254420000 1289920000		0246720000	
8/65/52.5 (.31/2.56/2.07)		8/65/52.5 (.31/2.56/2.07)		6/57.5/42.5 (.24/2.26/1.67)		6/57.5/42.5 (.24/2.26/1.67)	
8/65/48.5 (.31/2.56/1.91)		8/65/48.5 (.31/2.56/1.91)		6/57/40 (.24/2.24/1.58)		6/57/40 (.24/2.24/1.58)	
12 (.47)		12 (.47)		10 (.39)		10 (.39)	
300 V / 25 A / #22...8 AWG*		300 V / 25 A / #22...8 AWG*		300 V / 20 A / #22...12 AWG		300 V / 20 A / #22...12 AWG	
300 V / 25 A / #26...8 AWG		300 V / 25 A / #26...8 AWG		300 V / -A / #26...10 AWG		300 V / -A / #26...10 AWG	
380 VAC / 27 A / 6 mm²		380 VAC / 27 A / 6 mm²		380 VAC / 27 A / 4 mm²		380 VAC / 27 A / 4 mm²	
1.7 (16)		1.7 (16)		.8 (7.0)		8 (7.0)	
3.5		3.5		2.5		2.5	
Type	Part No.	Type	Part No.	Type	Part No.	Type	Part No.
AP (1.5)	0146760000	AP (1.5)	0146760000				
AP (3.0)	0146720000	AP (3.0)	0146720000	AP (1.5)	0244920000	AP (1.5)	0244920000
TW (1.5)	0242960000	TW (1.5)	0242960000				
TW (3.0)	0242920000	TW (3.0)	0242920000				
TW (0.5)	0474700000	TW (0.5)	0474700000	TW (0.5)	0474700000	TW (0.5)	0474700000
TSch 2	0353660000	TSch 2	0353660000	TSch 2	0353660000	TSch 2	0353660000
QL 2	0194300000	QL 2	0194300000	QL 2	0155900000	QL 2	0155900000
QL 3	0194400000	QL 3	0194400000	QL 3	0156000000	QL 3	0156000000
QL 4	0194500000	QL 4	0194500000	QL 4	0156100000	QL 4	0156100000
QL 10	0338300000	QL 10	0338300000	QL 10	0338100000	QL 10	0338100000
VH 12	0249000000	VH 12	0249000000	VH 8	0266700000	VH 8	0266700000
BS M 3 x 20 Cu	0377100000	BS M 3 x 20 Cu	0377100000	BS M 3 x 15 Cu	0377200000	BS M 3 x 15 Cu	0377200000
QS 2	0270960000	QS 2	0270960000				
QVS 2	0307300000	QVS 2	0307300000	QVS 2	1319260000	QVS 2	1319260000
QVS 3	0329300000	QVS 3	0329300000				
QVS 4	0307400000	QVS 4	0307400000				
VH 19	0318000000	VH 19	0318000000	VH 16	0309700000	VH 16	0309700000
BS 25 bare	0334700000	BS 25 bare	0334700000	BS M 3 x 22	1319900000	BS M 3 x 22	1319900000
QB 2	0205700000	QB 2	0205700000				
QB 3	0205800000	QB 3	0205800000				
QB 4	0205900000	QB 4	0205900000				
QB 10	0343800000	QB 10	0343800000				
				PS 2	0293800000	PS 2	0293800000
				PS 2.3	0180400000	PS 2.3	0180400000
				PS 4	0299600000	PS 4	0299600000
SSP 3	0531760000	SSP 3	0531760000	SSP 4	1319360000	SSP 4	1319360000
DEK 5/6	0468660001	DEK 5/6	0468660001	DEK 5/6	0468660001	DEK 5/6	0468660001
DEK 5/6	0468760001	DEK 5/6	0468760001	DEK 5/6	0468760001	DEK 5/6	0468760001

RAIL MOUNTED TERMINAL BLOCKS: SAK-SERIES

†See Accessories section for additional information.
 *For TS 35 #22...8 AWG
 ***With StB ø2.0