

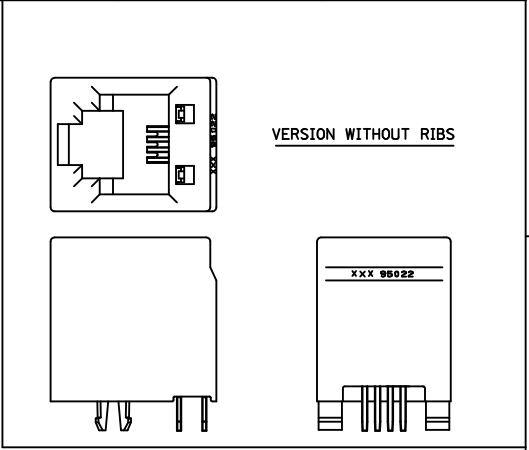
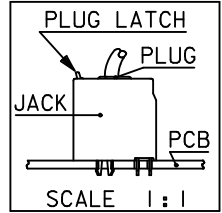
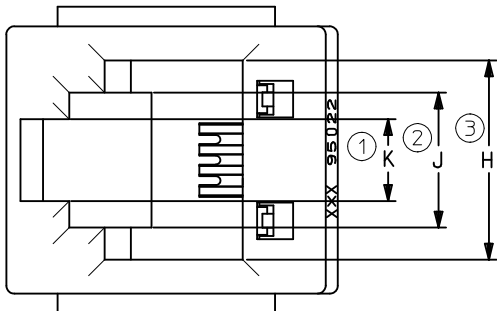
10 9 8 7 6 5 4 3 2 1

F

F

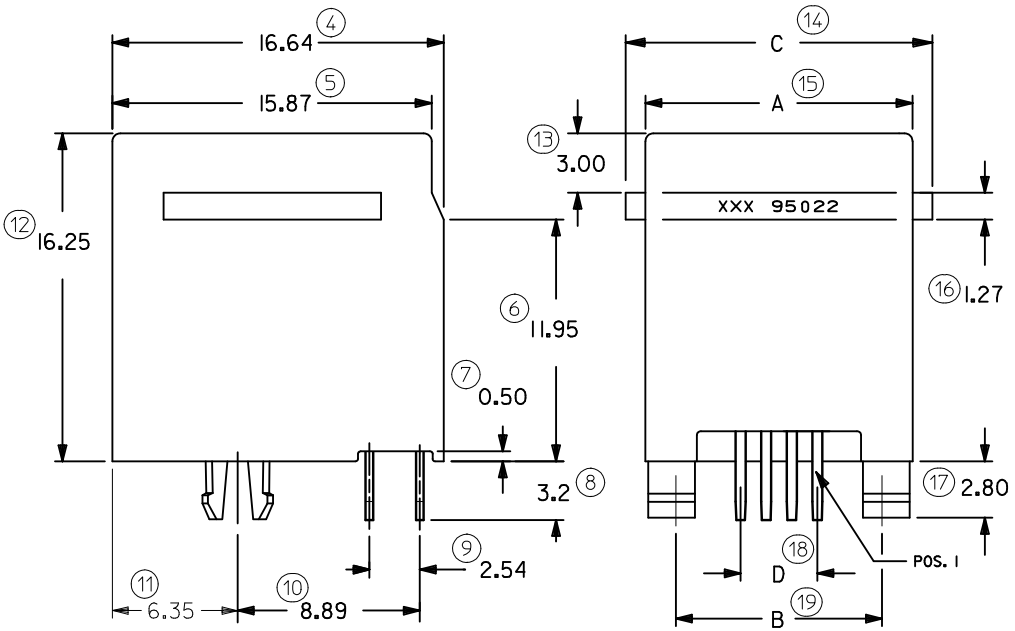
E

E



**NOTES :**

- 1- MATERIAL:
    - HOUSING: LCP FIBER GLASS FILLED 94-V-0 COLOR BLACK.
    - TERMINAL: COPPER ALLOY PLATED WITH:
      - BASE FINISH: NICKEL
      - CONTACT SURFACE FINISH: GOLD
      - OR
      - GOLD FLASH OVER PALLADIUM NICKEL
    - EXCEEDS PRODUCT REQUIREMENTS BASED ON PS-95522-001
  - 2- PC BOARD THICKNESS : 1.57
  - 3- JACK FOR MATING WITH IEC 60603-7 AND TIA-1096-A PLUGS 90075 MOLEX SERIES .
  - 4- PRODUCT SPECIFICATION PS-95522-001.
  - 5- APPLICATION SPECIFICATION AS-85513-001
  - 6- PACKAGING SPECIFICATION PK-95022. (SHT.1 TRAY PACKAGING) PK-95022. (SHT.2 TUBE PACKAGING)
  - 7- FOR ILLUSTRATION PURPOSES A 4 CIRCUIT IS SHOWN.
  - 8- MANUFACTURING I.D. CAN BE EITHER MG, MXF OR MXI.
- LAST INSPECTION NUMBER: 19



B

B

A

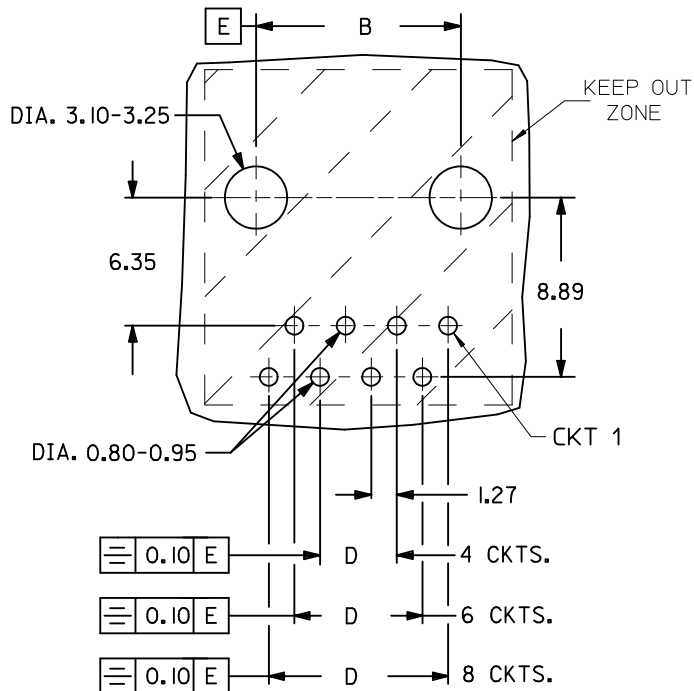
A

REMOVED PLATING NOTE EC NO: IPG2012-0698 2012/04/02 DRWIN:DBYRNES 2012/04/17 CHKD:MSHANAHAN 2012/06/28 APPR:EFOLAN	DESCRIPTION REV	QUALITY SYMBOLS	GENERAL TOLERANCES (UNLESS SPECIFIED)		DIMENSION STYLE MM ONLY		SCALE 1:1	DESIGN UNITS METRIC	THIRD ANGLE PROJECTION		
		▽=0 ◻=0	mm	INCH	DRAWN BY	DATE	TITLE				
			4 PLACES ± --- ± ---	KNOLLER	04/08/27	HIGH PROFILE TOP ENTRY JACK					
			3 PLACES ± --- ± ---	CHECKED BY	DATE	MOLEX INCORPORATED					
	2 PLACES ± 0.25 ± .014	APPROVED BY	DATE	DOCUMENT NO.							
	1 PLACE ± 0.35 ± ---	KNOLLER	04/08/30	SD-95522-001							
ANGULAR ± 2 °			DRAFT WHERE APPLICABLE MUST REMAIN WITHIN DIMENSIONS		MATERIAL NO. SEE CHART SHT. 2		SHEET NO. 1 OF 2		THIS DRAWING CONTAINS INFORMATION THAT IS PROPRIETARY TO MOLEX INCORPORATED AND SHOULD NOT BE USED WITHOUT WRITTEN PERMISSION		

9 8 7 6 5 4 3 2 1

PART NUMBERS FOR JACK WITH RIBS									
TYPE	PACKAGING	POS. 4	TOOLED	POS. 6	TOOLED	POS. 6	TOOLED	POS. 8	TOOLED
		4 CKTS.		4 CKTS.		6 CKTS.		8 CKTS.	
	TRAY	95522-2447	X	95522-2647	X	95522-2667	X	95522-2887	X
	TUBE					95522-2617	X		
						SEE NOTE 8 SH.1			

PART NUMBERS FOR JACK WITHOUT RIBS									
TYPE	PACKAGING	POS. 4	TOOLED	POS. 6	TOOLED	POS. 6	TOOLED	POS. 8	TOOLED
		4 CKTS.		4 CKTS.		6 CKTS.		8 CKTS.	
	TRAY	95522-2441	X	95522-2641	X	95522-2661	X	95522-2881	
	TUBE					95522-2611	X		



**MOUNTING HOLE PATTERNS**  
(SEE FROM COMPONENT SIDE)  
ALL DIMENSIONS REF DIMENSIONS

DIM.	TYPE	POS. 4	POS. 6		POS. 8
		4 CKTS.	4 CKTS.	6 CKTS.	8 CKTS.
A		11.18	13.21	13.21	15.24
B		7.62	10.16	10.16	11.43
C	(WITH RIBS)	14.00	16.00	16.00	18.00
D		3.81	3.81	6.35	8.89
H		7.82	9.88	9.88	11.94
J		5.64	6.70	6.70	6.30
K		3.07	4.06	4.06	4.06

<b>REMOVED PLATING OPTIONS</b> EC NO: IPG2012-0698 DRW:DBYRNES 2012/04/02 CHKD:MSHAHAN 2012/04/17 APPR:EFOLAN 2012/06/28	<b>QUALITY SYMBOLS</b> ▽=0 ◻=0	<b>GENERAL TOLERANCES (UNLESS SPECIFIED)</b> mm INCH 4 PLACES ± --- ± --- 3 PLACES ± --- ± --- 2 PLACES ± 0.25 ± --- 1 PLACE ± 0.35 ± --- ANGULAR ± 2°	<b>DIMENSION STYLE</b> MM ONLY DRAWN BY: KNOLLER DATE: 04/08/27 CHECKED BY: FCARABET DATE: 04/08/30 APPROVED BY: KNOLLER DATE: 04/08/30	SCALE: 1:1 DESIGN UNITS: METRIC THIRD ANGLE PROJECTION	HIGH PROFILE TOP ENTRY JACK  MOLEX INCORPORATED DOCUMENT NO. SD-95522-001 SHEET NO. 2 OF 2
	DRAFT WHERE APPLICABLE MUST REMAIN WITHIN DIMENSIONS	SEE CHART	MATERIAL NO.	THIS DRAWING CONTAINS INFORMATION THAT IS PROPRIETARY TO MOLEX INCORPORATED AND SHOULD NOT BE USED WITHOUT WRITTEN PERMISSION	
	REV	DESCRIPTION	SIZE: A3	SEE NOTE 8 SH.1	
	EC NO: IPG2012-0698	DRW:DBYRNES 2012/04/02	CHKD:MSHAHAN 2012/04/17	APPR:EFOLAN 2012/06/28	