

INDASH by PANAVISE®

751101607

Page 1 of 1

MOUNTING LOCATION:

(Multiple Locations) Either: Below the cubby or climate control MCB

TOOLS REQUIRED:

Dash Tool, Hook tool, Metal Phillips Screwdriver, 9/32 Wrench

PARTS INCLUDED:

(1) S7-1934 Mount

(4) A- #8x9/16" Needle Pt. Screw

STEP #1: With your hands and hook tool assist, release (1) clip on the upper right corner of the drivers knee panel. With 9/32(7mm) socket driver remove the (2) lower dash panel screws, as this will allow the dash lower panel to be removed.

STEP #2: Pull the radio / climate control / air vent bezel off by starting at the top right of the air vent, to the right of the radio. Pull to release a total of (11) clips. Set Parking Brake. Put the column shift into L. Tilt out the bezel around the shifter. Disconnect all plugs and wires. Set bezel aside.

NOTE: THIS MOUNT CAN BE MODIFIED TO FIT CLOSER TO THE DRIVER. SEE STEP#3A

STEP #3: Locate the screw at the bottom right side of the dash cavity. Remove this screw. Place mount over screw hole and replace the screw with the 9/32" wrench. Install the supplied screws (2 or 4) into the holes on the mount.

STEP #3A: Take the mount, locate the dash marks by the mounting hole. Cut at the marks closest to screw hole to allow fit in (2nd) position, install (4) screws. (3rd) mount position is achieved by cutting the marks to make the legs shorter to allow the mounting of the InDash along the bottom of the dash cavity closest to the driver. Use only the supplied screws in the (2) screw holes after cutting. Replace disconnected plugs and the bezels in reverse order.

INSTALLATION IS NOW COMPLETE. ENJOY YOUR NEW INDASH by PANAVISE MOUNT.
Remove climate control to install

CELL PHONE & MEDIA MOUNT

INSTALLATION INSTRUCTIONS

PART#: 751101607

MFG: CHEVY / GMC

MODELS & YEARS:

CHEVY - 2014 -2500/3500 Silverado Only

Silverado-Work Truck Dash 07-13

GMC - 2014 -2500/3500 Sierra Only

Sierra-Work Truck Dash 07-13

(See 751101707 w/Air Vents Beside Radio)

** ADVISEMENT **

Read instructions completely prior to starting installation. All InDash Mounts are designed so that after installation, phone is facing normal driver position for left-hand drive vehicles. This mount is not designed to be used in foreign countries with right-hand drive vehicles. Use extreme care when working around the plastic components on the dash. Excess force, can cause breakage of the plastic components.



Knee & dash panel split



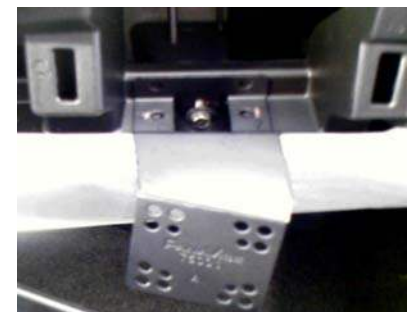
Bezel Removed



InDash in (3rd) location



InDash in (2nd) location



InDash in (1st) location



InDash installed showing all locations at once. 3 can be used together.



05-28-15