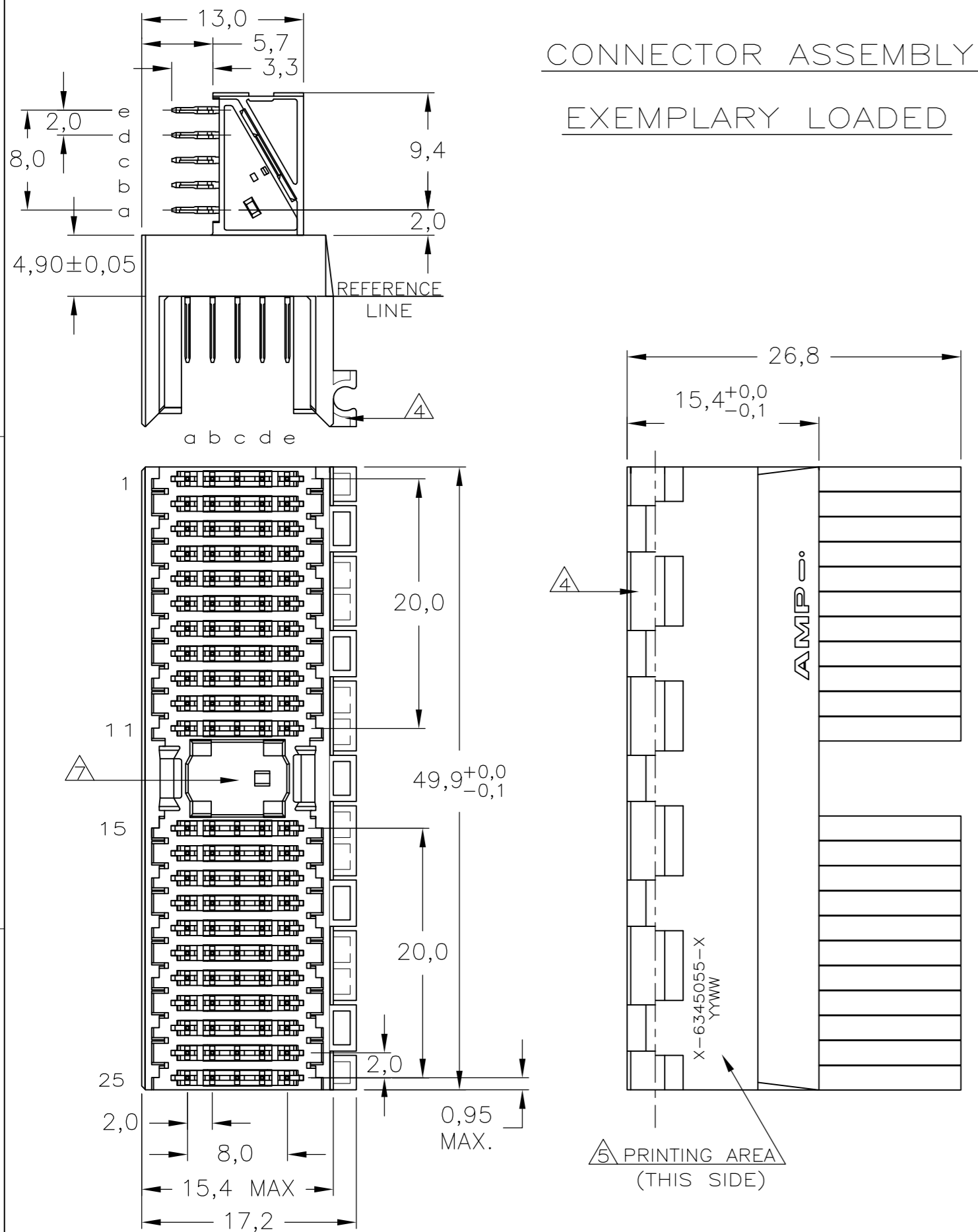
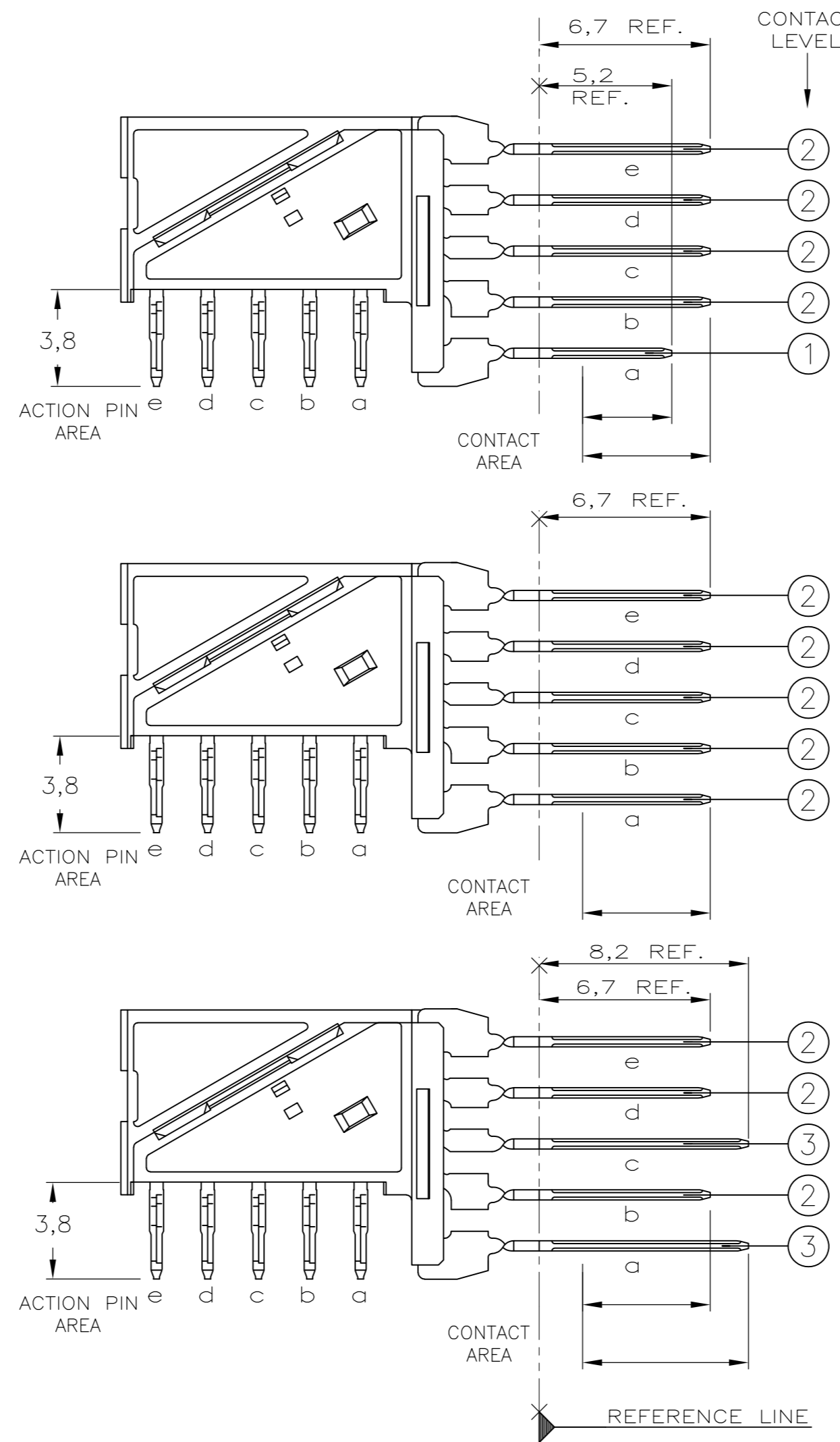


THIS DRAWING IS UNPUBLISHED. RELEASED FOR PUBLICATION
 © COPYRIGHT BY TYCO ELECTRONICS CORPORATION. ALL RIGHTS RESERVED.



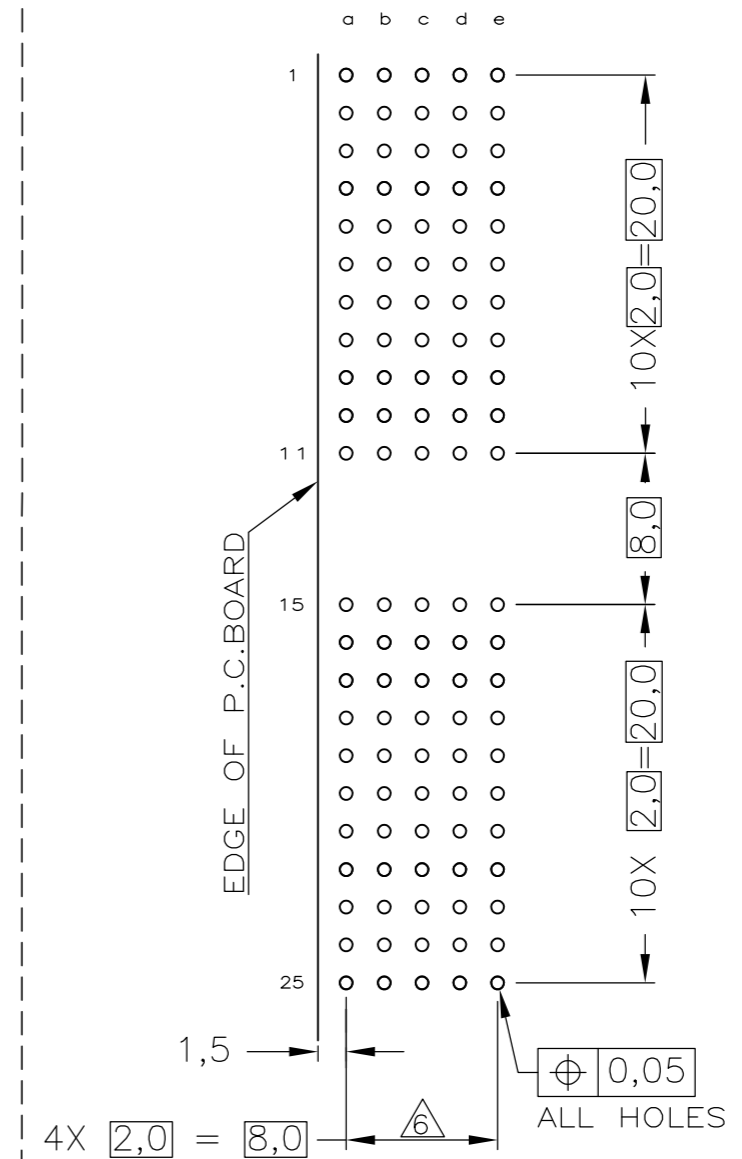
CONNECTOR ASSEMBLY
EXEMPLARY LOADED

CONTACT DIMENSIONS



LOC	DIST	REVISIONS				
P	LTR	DESCRIPTION	DATE	DWN	APVD	
H	-	B	EH10-0680-05	01JUN05	BSV	BM
		C	ECR-10-01B652	10SEP10	JS	MQW

RECOMMENDED PCB-HOLE LAY-OUT
COMPONENT SIDE SHOWN



CONTACT LAYOUT

	a	b	c	d	e
1	1	2	2	2	2
2	2	2	2	2	2
3	2	2	2	2	2
4	2	2	2	2	2
5	2	2	2	2	2
6	2	2	2	2	2
7	2	2	2	2	2
8	2	2	2	2	2
9	2	2	2	2	2
10	2	2	2	2	2
11	2	2	2	2	2
MULTI PURPOSE CENTRE					
15	3	2	3	2	2
16	2	2	2	2	2
17	2	2	2	2	2
18	2	2	2	2	2
19	2	2	2	2	2
20	2	2	2	2	2
21	2	2	2	2	2
22	2	2	2	2	2
23	2	2	2	2	2
24	2	2	2	2	2
25	2	2	2	2	2

- NOTES:
- 1 MATERIAL HOUSING : GREY GLASSFILLED POLYESTER UL-RATING Ø
 - CONTACT : PHOSPHORBRONZE
 - △ GENERAL PLATING SPECIFICATION: UNDERPLATING (ENTIRE CONTACT): 1,27µm NICKEL MIN. AND ACTION PIN: 0,5µm TIN MIN. FOR PLATING OF MATING SURFACES SEE APPLICABLE SPECIFICATION REFERENCE FOR EACH DASH NUMBER.
 - △ CONFORMS TO ALL TESTING ACCORDING IEC 61076-4-101 PERFORMANCE LEVEL 2.
 - △ CONNECTOR ASSEMBLY WITH LATCH HINGE FOR CABLE CONNECTOR.
 - △ CONNECTOR PRINTED WITH PARTNUMBER AND DATECODE
 - △ PLATED-THROUGH HOLES AT 2x2mm SQUARE GRID.
 - △ AREA FOR KEYING PART (BASIC PART NUMBER 100525).

THIS DRAWING IS A CONTROLLED DOCUMENT.		DWN	25AUG2004	Tyco Electronics Corporation	
DIMENSIONS: mm		CHK	22DEC2004	's-Hertogenbosch, 5222AR-32	
TOLERANCES UNLESS OTHERWISE SPECIFIED:		APVD	22DEC2004	NAME	
0-PLC ±		B.MOOIJ		Z-PACK 2mm HM TYPE A	
1-PLC ±		B.MOOIJ		110 POS. RIGHT ANGLE MALE	
2-PLC ± ±0.2		108-19082		CONNECTOR ASSEMBLY	
3-PLC ±		114-19029		SIZE	RESTRICTED TO
4-PLC ±		WEIGHT	-	A2	-
ANGLES ±		CUSTOMER DRAWING		CAGE CODE	00779
FINISH		SCALE		DRAWING NO	C=6345055
		5:1		SHEET	1 OF 1
				REV	C

6345055

A