

74F64 4-2-3-2-Input AND-OR-Invert Gate

General Description

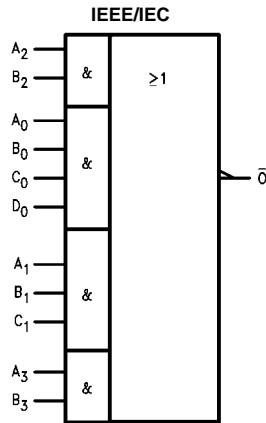
This device contains gates configured to perform a 4-2-3-2 input AND-OR-INVERT function.

Ordering Code:

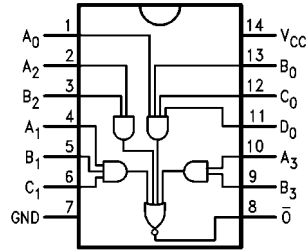
| Order Number | Package Number | Package Description |
|--------------|----------------|---|
| 74F64SC | M14A | 14-Lead Small Outline Integrated Circuit (SOIC), JEDEC MS-120, 0.150 Narrow |
| 74F64SJ | M14D | 14-Lead Small Outline Package (SOP), EIAJ TYPE II, 5.3mm Wide |
| 74F64PC | N14A | 14-Lead Plastic Dual-In-Line Package (PDIP), JEDEC MS-001, 0.300 Wide |

Devices also available in Tape and Reel. Specify by appending the suffix letter "X" to the ordering code.

Logic Symbol



Connection Diagram



Unit Loading/Fan Out

| Pin Names | Description | U.L. | Input I_{IH}/I_{IL} |
|----------------------|-------------|----------|------------------------|
| | | HIGH/LOW | Output I_{OH}/I_{OL} |
| A_n, B_n, C_n, D_n | Inputs | 1.0/1.0 | 20 μ A/-0.6 mA |
| \bar{O} | Output | 50/33.3 | -1 mA/20 mA |

Absolute Maximum Ratings (Note 1)

| | |
|--|--------------------------------------|
| Storage Temperature | -65°C to +150°C |
| Ambient Temperature under Bias | -55°C to +125°C |
| Junction Temperature under Bias | -55°C to +150°C |
| V _{CC} Pin Potential to Ground Pin | -0.5V to +7.0V |
| Input Voltage (Note 2) | -0.5V to +7.0V |
| Input Current (Note 2) | -30 mA to +5.0 mA |
| Voltage Applied to Output in HIGH State (with V _{CC} = 0V) | |
| Standard Output | -0.5V to V _{CC} |
| 3-STATE Output | -0.5V to +5.5V |
| Current Applied to Output in LOW State (Max) | twice the rated I _{OL} (mA) |

Recommended Operating Conditions

| | |
|------------------------------|----------------|
| Free Air Ambient Temperature | 0°C to +70°C |
| Supply Voltage | +4.5V to +5.5V |

Note 1: Absolute maximum ratings are values beyond which the device may be damaged or have its useful life impaired. Functional operation under these conditions is not implied.

Note 2: Either voltage limit or current limit is sufficient to protect inputs.

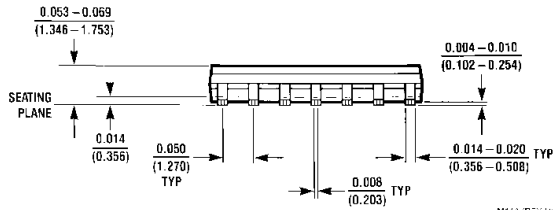
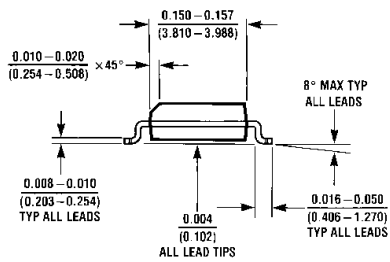
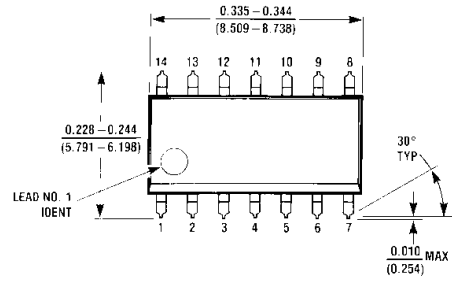
DC Electrical Characteristics

| Symbol | Parameter | Units | V _{CC} | Conditions |
|------------------|-----------------------------------|-------|-----------------|--|
| V _{IH} | Input HIGH Voltage | V | | Recognized as a HIGH Signal |
| V _{IL} | Input LOW Voltage | V | | Recognized as a LOW Signal |
| V _{CD} | Input Clamp Diode Voltage | V | Min | I _{IN} = -18 mA |
| V _{OH} | Output HIGH Voltage | V | Min | I _{OH} = -1 mA I _{OH} = -1 mA |
| V _{OL} | Output LOW Voltage | V | Min | I _{OL} = 20 mA |
| I _{IH} | Input HIGH Current | μA | Max | V _{IN} = 2.7V |
| I _{BVI} | Input HIGH Current Breakdown Test | μA | Max | V _{IN} = 7.0V |
| I _{CEX} | Output High Leakage Current | μA | Max | V _{OUT} = V _{CC} |
| V _{ID} | Input Leakage Test | V | 0.0 | I _{ID} = 1.9 μA All Other Pins Grounded |
| I _{OD} | Output Leakage Circuit Current | μA | 0.0 | V _{IOD} = 150 mV All Other Pins Grounded |
| I _{IL} | Input LOW Current | mA | Max | V _{IN} = 0.5V |
| I _{OS} | Output Short-Circuit Current | mA | Max | V _{OUT} = 0V |
| I _{CCH} | Power Supply Current | mA | Max | V _O = HIGH |
| I _{CCL} | Power Supply Current | mA | Max | V _O = LOW |

AC Electrical Characteristics

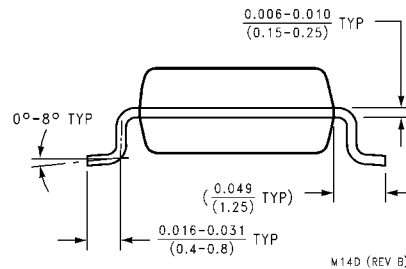
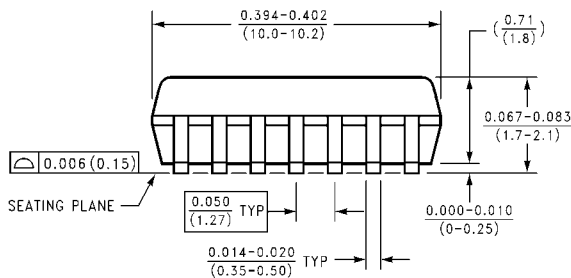
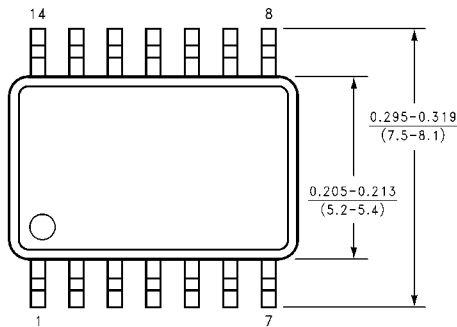
| Symbol | Parameter | T _A = +25°C V _{CC} = +5.0V C _L = 50 pF | | | T _A = 0° to +70°C C _L = 50 pF | | Units |
|------------------|--|---|-----|-----|--|-----|-------|
| | | Min | Typ | Max | Min | Max | |
| t _{PLH} | Propagation Delay | 2.5 | 4.6 | 6.5 | 2.5 | 7.5 | ns |
| t _{PHL} | A _n , B _n , C _n , D _n to \bar{O} | 1.5 | 3.2 | 4.5 | 1.5 | 5.5 | |

Physical Dimensions inches (millimeters) unless otherwise noted



M14A (REV H)

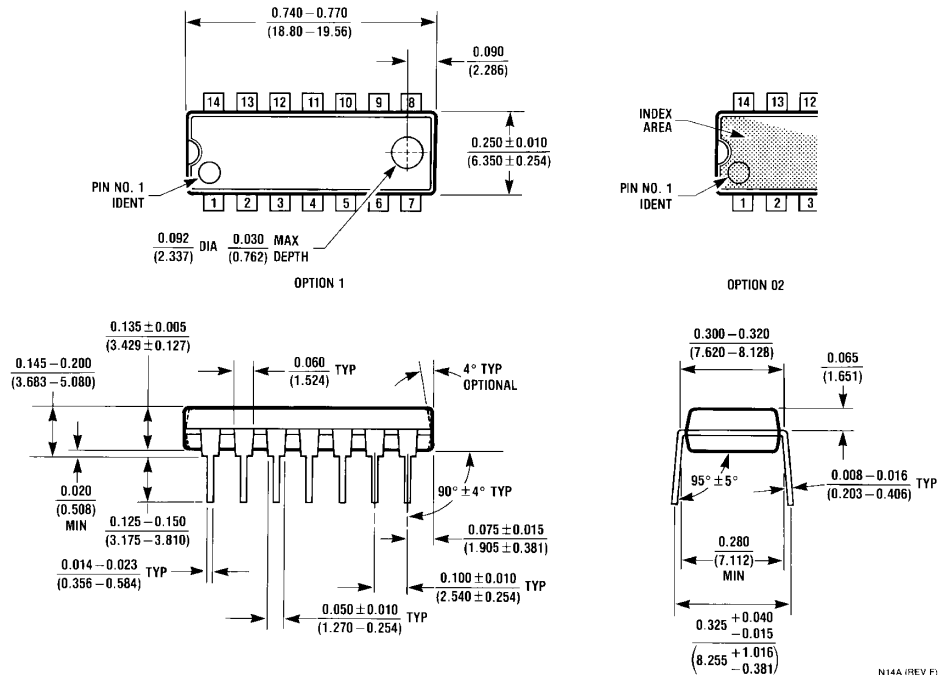
**14-Lead Small Outline Integrated Circuit (SOIC), JEDEC MS-120, 0.150 Narrow
Package Number M14A**



M14D (REV B)

**14-Lead Small Outline Package (SOP), EIAJ TYPE II, 5.3mm Wide
Package Number M14D**

Physical Dimensions inches (millimeters) unless otherwise noted (Continued)



14-Lead Plastic Dual-In-Line Package (PDIP), JEDEC MS-001, 0.300 Wide Package Number N14A

LIFE SUPPORT POLICY

FAIRCHILD'S PRODUCTS ARE NOT AUTHORIZED FOR USE AS CRITICAL COMPONENTS IN LIFE SUPPORT DEVICES OR SYSTEMS WITHOUT THE EXPRESS WRITTEN APPROVAL OF THE PRESIDENT OF FAIRCHILD SEMICONDUCTOR CORPORATION. As used herein:

1. Life support devices or systems are devices or systems which, (a) are intended for surgical implant into the body, or (b) support or sustain life, and (c) whose failure to perform when properly used in accordance with instructions for use provided in the labeling, can be reasonably expected to result in a significant injury to the user.
2. A critical component in any component of a life support device or system whose failure to perform can be reasonably expected to cause the failure of the life support device or system, or to affect its safety or effectiveness.

www.fairchildsemi.com