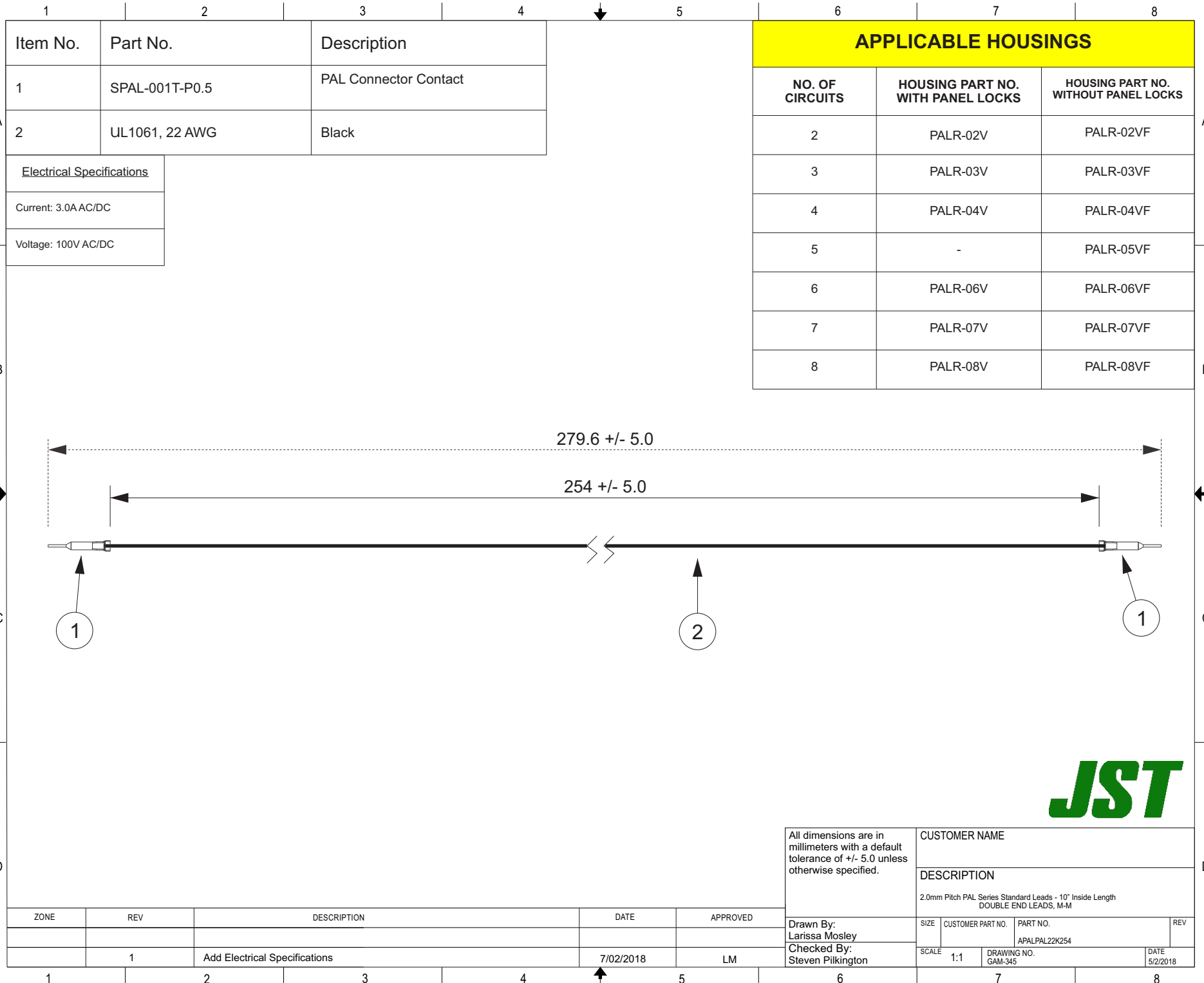


THIS DRAWING CONTAINS INFORMATION THAT IS PROPRIETARY TO J.S.T. AND SHALL NOT BE USED OR SHOWN WITHOUT WRITTEN PERMISSION.



Item No.	Part No.	Description
1	SPAL-001T-P0.5	PAL Connector Contact
2	UL1061, 22 AWG	Black

Electrical Specifications
Current: 3.0A AC/DC
Voltage: 100V AC/DC

APPLICABLE HOUSINGS		
NO. OF CIRCUITS	HOUSING PART NO. WITH PANEL LOCKS	HOUSING PART NO. WITHOUT PANEL LOCKS
2	PALR-02V	PALR-02VF
3	PALR-03V	PALR-03VF
4	PALR-04V	PALR-04VF
5	-	PALR-05VF
6	PALR-06V	PALR-06VF
7	PALR-07V	PALR-07VF
8	PALR-08V	PALR-08VF

ZONE	REV	DESCRIPTION	DATE	APPROVED
1	1	Add Electrical Specifications	7/02/2018	LM

All dimensions are in millimeters with a default tolerance of +/- 5.0 unless otherwise specified.

CUSTOMER NAME

DESCRIPTION
2.0mm Pitch PAL Series Standard Leads - 10" Inside Length
DOUBLE END LEADS, M-M

Drawn By: Larissa Mosley	SIZE	CUSTOMER PART NO.	PART NO.	REV
Checked By: Steven Pilkington	SCALE	DRAWING NO. GAM-345	APALPAL22K254	DATE 5/2/2018

