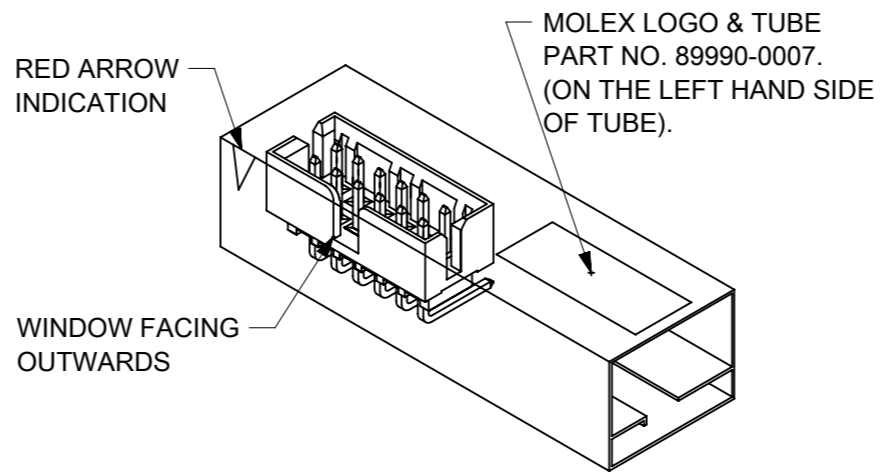
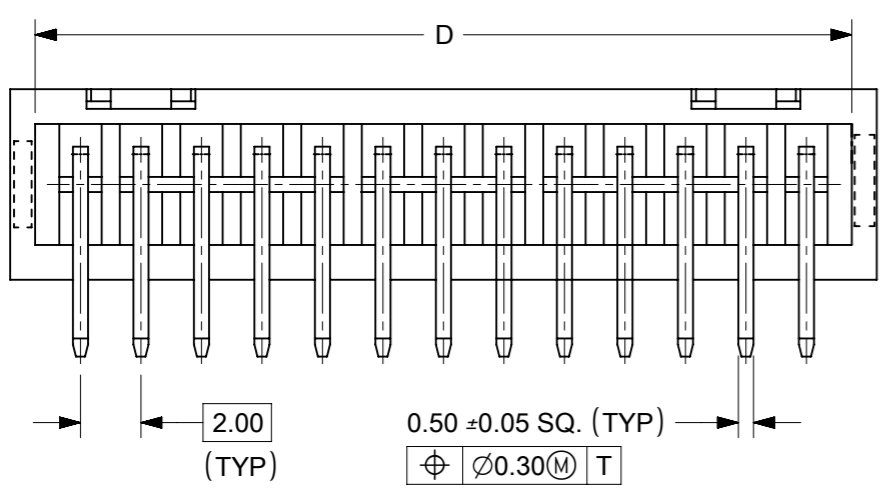
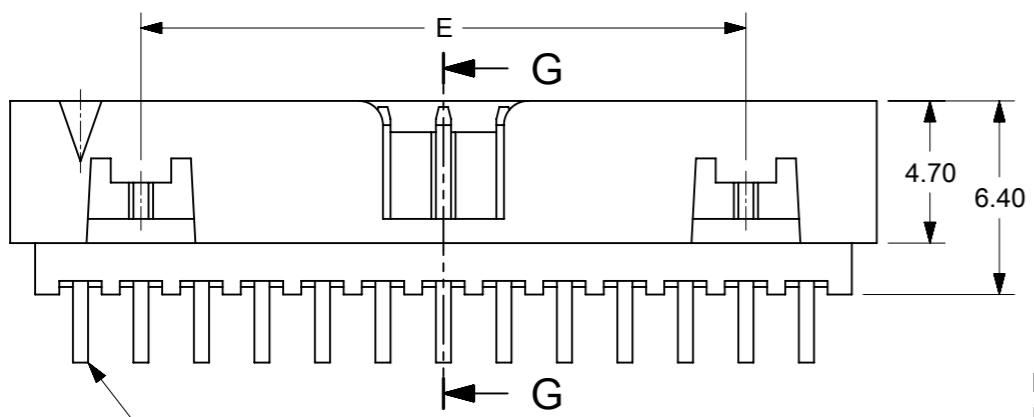
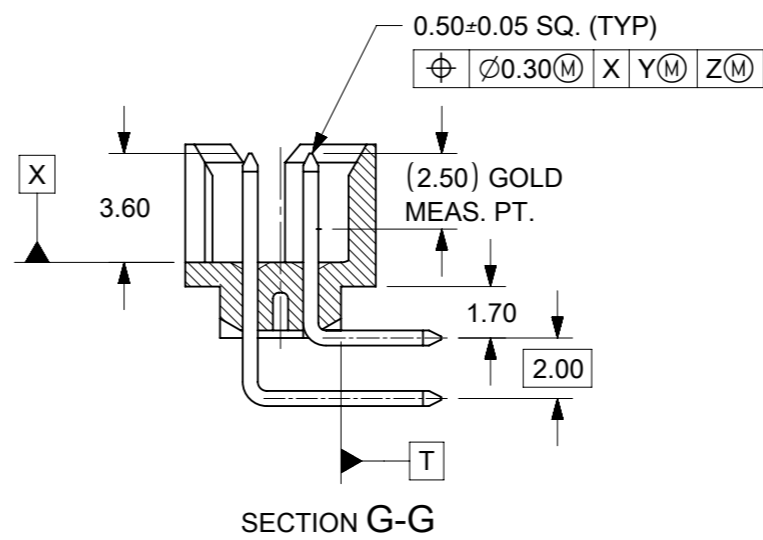
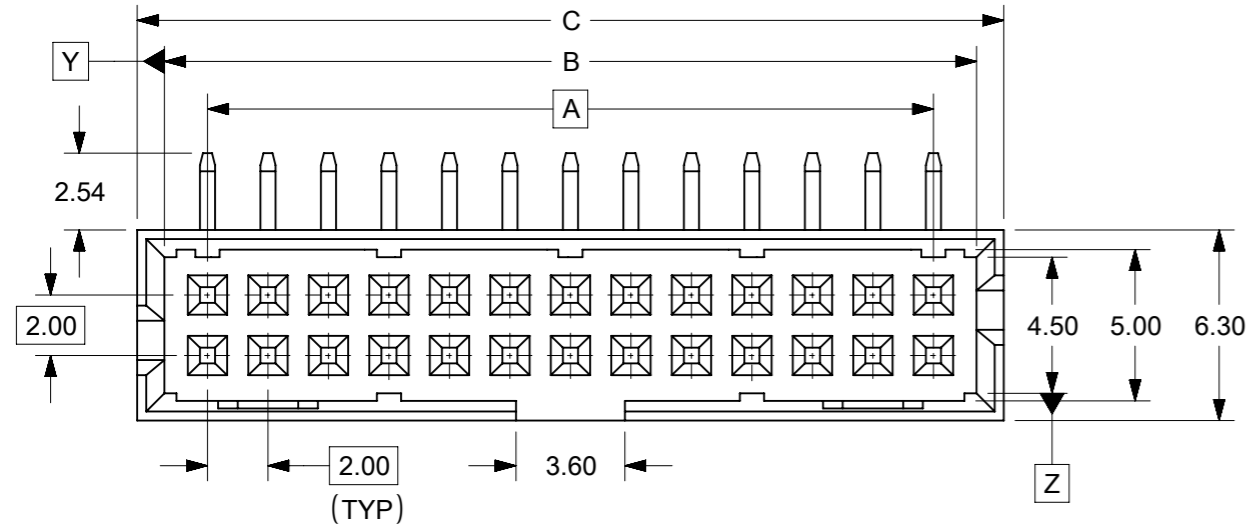


| PART NO. W/O CAP IN TUBE | CKT SIZE | DIMENSION | | | | |
|--------------------------------|-------------|-----------|-------|-------|-------|-------|
| | | A | B | C | D | E |
| 87833-262* | 26 | 24.00 | 26.85 | 28.65 | 27.00 | 20.00 |

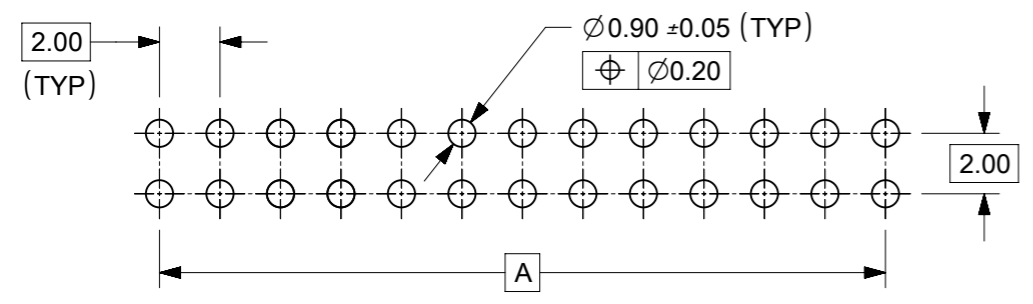


REF: ORIENTATION OF PART IN TUBE.
(FOR THE REFERENCE OF PART/TUBE ASSEMBLY.)

PART NUMBER LEGEND :
87833 - 26 **

PLATING OPTIONS:
22 - 0.38µm/15µin GOLD IN CONTACT AREA AND 1.88µm/75µin MIN. TIN IN SOLDER TAIL AREA OVER 1.27µm/50µin MIN. NICKEL OVERALL.
23 - 0.76µm/30µin GOLD IN CONTACT AREA AND 1.88µm/75µin MIN. TIN IN SOLDER TAIL AREA OVER 1.27µm/50µin MIN. NICKEL OVERALL.

- NOTES:**
- MATERIAL :
HOUSING : 30% G.F., NYLON 46, UL94V-0, COLOR BLACK.
PIN : 0.50mm SQ. PHOSPHOR BRONZE.
 - PIN PUSHOUT FORCE : 0.91kg MIN. IN EITHER DIRECTION.
 - PRODUCT SPECIFICATION PS-87831-027 APPLIES.
 - PRODUCT HAS A WIDER POLARIZATION SLOT COMPARE TO THE STANDARD FAMILY SERIES.
 - THIS HEADER MATES WITH MOLEX:
 - CRIMP RECEPTACLE HOUSING, 51110 SERIES WITH CRIMP TERMINAL, 50394 SERIES.
 - 2mm MILLIGRID DUAL ROW IDT, 87568 SERIES.
 - PARTS TO BE PACKED IN TUBE WITH MOISTURE BARRIER BAG.



RECOMMENDED PCB PATTERN

| SYMBOLS | THIS DRAWING CONTAINS INFORMATION THAT IS PROPRIETARY TO MOLEX ELECTRONIC TECHNOLOGIES, LLC AND SHOULD NOT BE USED WITHOUT WRITTEN PERMISSION | | CURRENT REV DESC: SEE ECM 170067 FOR REFERENCE | | | | | | | | | | | | | | | | | | |
|---|---|-----------------|--|--|----------------|--------------|---------------------------------------|------------------------|-----------------|---|----------|----------|-----------|--|--|------------|--|--|---------------------|------------------------|--------------------------|
| | <table border="1"> <tr> <th>DIMENSION UNITS</th> <th>SCALE</th> </tr> <tr> <td>MM</td> <td>1:1</td> </tr> </table> | DIMENSION UNITS | SCALE | MM | | 1:1 | GENERAL TOLERANCES (UNLESS SPECIFIED) | | EC NO: 611028 | SALES DRAWING MGRID, R/A SHROUDED HDR W/SLOTS AND STANDOFF | | | | | | | | | | | |
| DIMENSION UNITS | SCALE | | | | | | | | | | | | | | | | | | | | |
| MM | 1:1 | | | | | | | | | | | | | | | | | | | | |
| <table border="1"> <tr> <th></th> <th>MM</th> <th>INCH</th> </tr> <tr> <td>4 PLACES ±</td> <td></td> <td></td> </tr> <tr> <td>3 PLACES ±</td> <td></td> <td></td> </tr> <tr> <td>2 PLACES ±</td> <td>0.2</td> <td></td> </tr> <tr> <td>1 PLACE ±</td> <td></td> <td></td> </tr> <tr> <td>0 PLACES ±</td> <td></td> <td></td> </tr> </table> | | MM | INCH | 4 PLACES ± | | | 3 PLACES ± | | | 2 PLACES ± | 0.2 | | 1 PLACE ± | | | 0 PLACES ± | | | DRWN: ME 2019/01/17 | DRWN: ATSEE 2003/10/27 | PRODUCT CUSTOMER DRAWING |
| | MM | INCH | | | | | | | | | | | | | | | | | | | |
| 4 PLACES ± | | | | | | | | | | | | | | | | | | | | | |
| 3 PLACES ± | | | | | | | | | | | | | | | | | | | | | |
| 2 PLACES ± | 0.2 | | | | | | | | | | | | | | | | | | | | |
| 1 PLACE ± | | | | | | | | | | | | | | | | | | | | | |
| 0 PLACES ± | | | | | | | | | | | | | | | | | | | | | |
| <table border="1"> <tr> <th></th> <th>MM</th> <th>INCH</th> </tr> <tr> <td>ANGULAR TOL ±</td> <td>3.0°</td> <td></td> </tr> </table> | | MM | INCH | ANGULAR TOL ± | 3.0° | | CHK'D: MKAMATHMARAK 2019/01/25 | APPR: SKTOH 2003/11/07 | DOCUMENT NUMBER | DOC TYPE | DOC PART | REVISION | | | | | | | | | |
| | MM | INCH | | | | | | | | | | | | | | | | | | | |
| ANGULAR TOL ± | 3.0° | | | | | | | | | | | | | | | | | | | | |
| <table border="1"> <tr> <th></th> <th>MM</th> <th>INCH</th> </tr> <tr> <td>DRAFT WHERE APPLICABLE MUST REMAIN WITHIN DIMENSIONS</td> <td></td> <td></td> </tr> </table> | | MM | INCH | DRAFT WHERE APPLICABLE MUST REMAIN WITHIN DIMENSIONS | | | APPR: ME 2019/01/28 | INITIAL REVISION: | SD-87833-018 | PSD | 001 | A4 | | | | | | | | | |
| | MM | INCH | | | | | | | | | | | | | | | | | | | |
| DRAFT WHERE APPLICABLE MUST REMAIN WITHIN DIMENSIONS | | | | | | | | | | | | | | | | | | | | | |
| | THIRD ANGLE PROJECTION | DRAWING | SERIES | MATERIAL NUMBER | CUSTOMER | SHEET NUMBER | | | | | | | | | | | | | | | |
| | | A3-SIZE | 87833 | SEE TABLE | GENERAL MARKET | 1 OF 1 | | | | | | | | | | | | | | | |