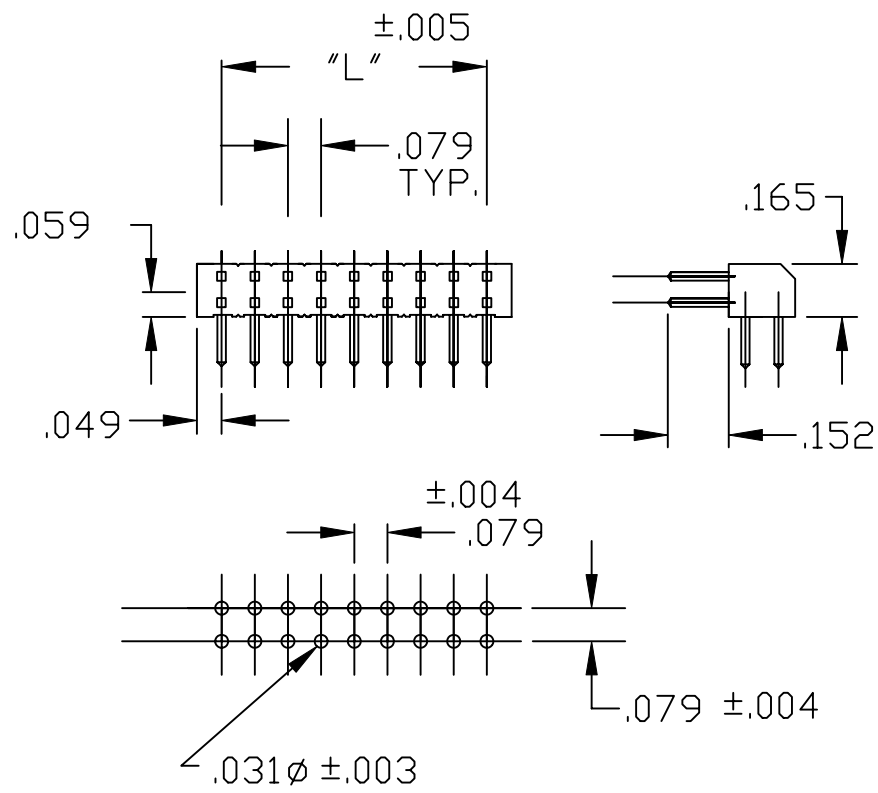
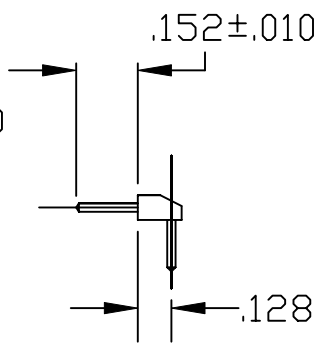
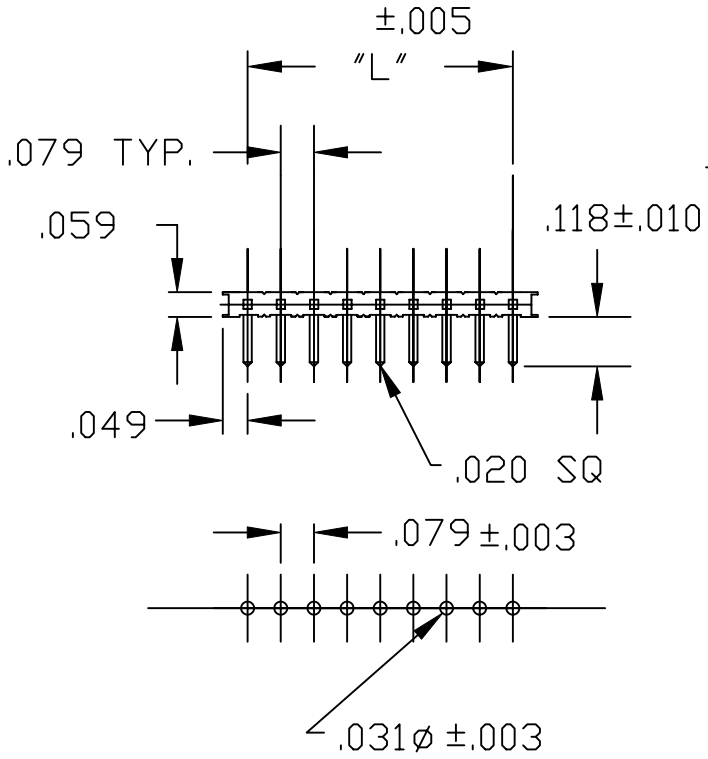


DESCRIPTION: 2mm HEADER STRIP STRAIGHT

"L" = NO. OF PINS/ROW X .079 - .079



216X-XX-02RXX

SERIES _____
 2163 = SINGLE ROW
 2164 = DUAL ROW

POSITIONS _____
 SINGLE - INCRMENTS OF 1
 DUAL = INCREMENTS OF 2

TYPE _____
 02 = RIGHT ANGLE

PLATING _____
 P2 = 15u" GOLD MATING AREA
 100u" MATTE TIN ON TAILS

MATERIALS:
 HOUSING: GLASS FILLED THERMOPLASTIC UL 94V-0
 COLOR: BLACK
 CONTACTS: DRAWN PHOSPHOR BRONZE 3./ HARD
 RoHS COMPLIANT

	THESE DRAWINGS AND SPECIFICATIONS ARE THE PROPERTY OF NorComp AND SHALL NOT BE REPRODUCED, COPIED OR USED AS THE BASIS FOR THE MANUFACTURE OF SALE OF APPARATUS WITHOUT WRITTEN PERMISSION.		DRAWN: PAM JENKINS	DATE: 7-29-05
	<h1>NorComp</h1>		CHECKED:	DATE:
SCALE:			SHEET 1 OF 1	REV 1
DWG NO.			216X-XX-02RPX	