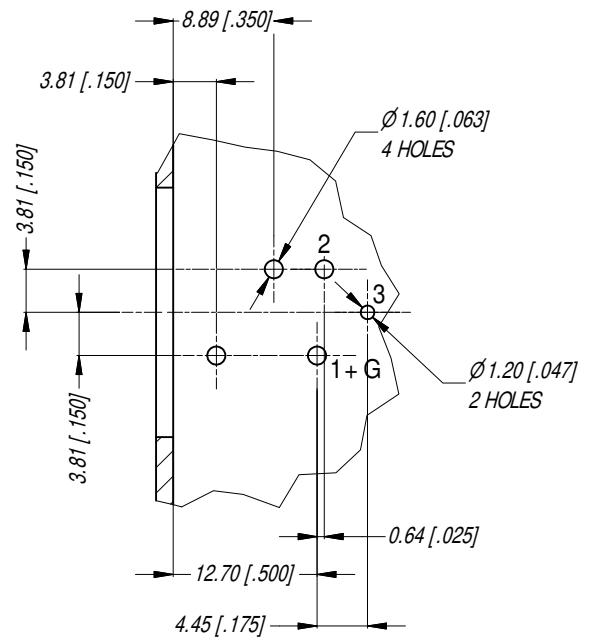
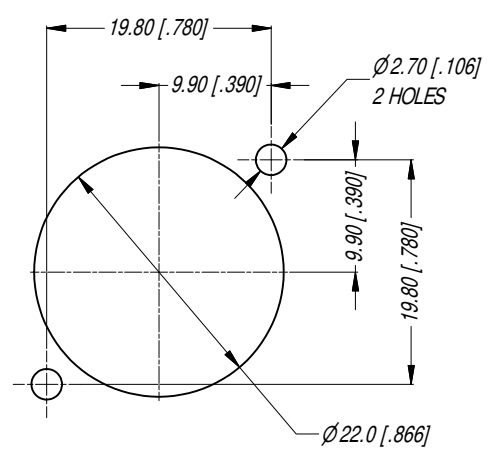


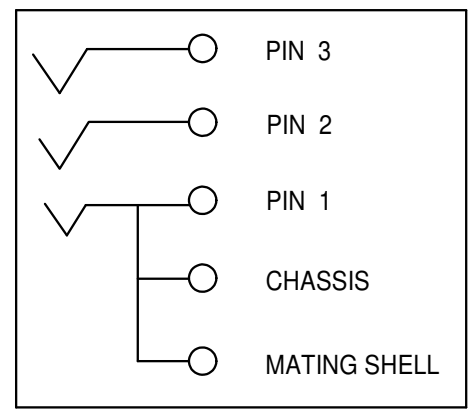
MIN MOUNTING PITCH (1:1)



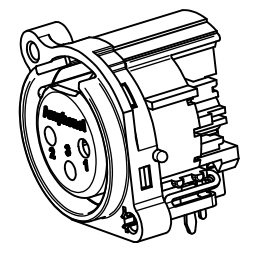
PCB LAYOUT
TOLERANCE : ± 0.05 [0.002 in]
NOTE: DIMS IN PARENTHESSES ARE IN INCHES



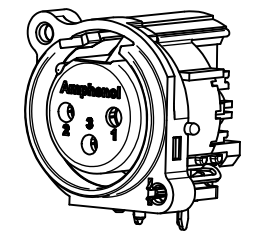
PANEL CUT OUT
REAR VIEW



SCHEMATIC CHART



3D VIEW (1:1)



REV	DESCRIPTION	DATE	BY	CHG NO
2	ADD SUFFIX B TO PART No	27/08/15	T.N	9318
1	UPDATE FEMALE SHELL	2/4/2009	A.O	8793
0	FIRST ISSUE	18/09/07	T.N	8686

REVISION HISTORY

UNLESS OTHERWISE SPECIFIED TOLERANCE TO BE:		THIS DOCUMENT IS THE PROPERTY OF AMPHENOL AUSTRALIA PTY. LTD. NO PART THEREOF MAY BE REPRODUCED AND USED WITHOUT THE PRIOR WRITTEN CONSENT OF THE OWNER			
LINEAR	ANGULAR	CAD FILE	DRN:	T.N	DATE:
X ±	X° ± 1	55010490000221	CKD:	P.M	DATE:
X.X ±	X.X° ± 30°		APPD:	P.M	DATE:
X.XX ±	X.XX° ± 15°				
BREAK ALL SHARP EDGES AND REMOVE ALL BURRS		MATL:	REFER TO COMPONENTS		
DO NOT SCALE		FINISH:	REFER TO COMPONENTS		
DIMENSIONS IN MILLIMETRES		SCALE:	3:2	PART No:	AC3FBHL1-AU-B

TITLE:	XLR FEMALE B TYPE CONNECTOR	Amphenol
	CUSTOMER DWG	Amphenol Australia Pty.Ltd. 2 Fiveways Blvd. Keysborough, Vic3173
SIZE:	A4	DRAWING NO. 55010490-000-2
		SHEET 2/2

NOTE: SUFFIX "B" IN THE PART No. INDICATES BULK PACK.