

IFC300/400 Data Logger Interface Quick Start Guide



Package Contents

IFC300/400

- IFC300/400 Docking Station
- USB to Mini-USB Cable
- Data Logger Software on USB Flash Drive
- Quick Installation Guide

Model No. IFC300/400

For XP SP3/Vista/Windows 7/Windows 8

IMPORTANT: Do not connect the IFC300/400 to your PC until instructed to do so or the setup will not work.

1 Install Software and Setup USB Data Logger Interface

A Insert the MadgeTech Data Logger Software USB Flash Drive into an available USB port on your PC. Click the **Start** menu and choose **Computer or My Computer**. Browse to the Removable Disk drive corresponding to the USB port you selected.

For Windows 7 users, a dialog box may appear with a list of options. Select "Open Folder to View files". If you are not prompted, click the **Start** menu and choose **Computer or My Computer** and browse to the Removable Disk drive corresponding to the USB port you selected.



Once you locate the contents of the USB flash drive, click on the **autorun** program file. A set-up screen will display with options as shown above.

B Click on the **MadgeTech Software** link on the USB Contents screen to start the installation of the Data Logger Software. The **Install MadgeTech Software** window will appear, click on the **Install MadgeTech Software** link. Follow the on screen prompts to complete the installation. Click Back to MadgeTech Contents when completed.



C The default directory is C:\Program Files\MTI-USB\Datalogger Interface. If you choose to change the location of the install directory click on the **Change Install Location** button. Once you have the install location set click on the **Install** button to start the installation.



To install the drivers for the IFC300/400, click on the **Drivers and Third Party Tools** link on the CD Contents screen. In the next window click on **Install USB Interface Drivers**. A window will appear prompting for a directory and to start the installation.

2

Connect the USB Data Logger Interface

- A** Remove the Warning Label to expose the USB connector. Connect one end of the USB cable to the USB port of the IFC300/400.

WARNING: Install driver before connecting this device.

- B** Connect the other end to a USB port on your PC. When the IFC300/400 is plugged in, a **New Hardware Found** message will appear in the lower right corner of your screen. The new drivers will automatically configure themselves for use with the Interface cable. A message will then appear that the new hardware is installed and ready to use.

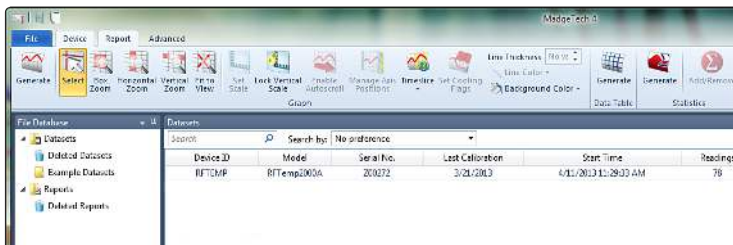


The installation of the USB data logger interface is complete.

3

Test the Data Logger Interface Operation

- A** To verify that the USB Interface drivers are installed properly, check to ensure the Data Logger Software can recognize a device.
- B** When the interface cable is connected to the PC the blue LED power indicator light should be on. If the indicator light is **not** on, unplug the interface cable, wait 5 seconds and plug it back into the PC.
- C** Start the MadgeTech Data Logger Software. (If necessary, see the software manual for additional information on the software)
- D** Your device(s) will appear in the list displayed, select your device in this list and choose your desired start method.



Additional Information

For additional information or troubleshooting assistance, refer to the User Guide on the Data Logger Software USB Flash Drive, email support@madgetech.com or call (603) 456-2011.

MadgeTech, Inc.

6 Warner Road • Warner, NH 03278
Phone 603.456.2011 • Fax 603.456.2012
www.madgetech.com • info@madgetech.com