

Reverse Mount Optopipe® Light Pipes 3mm Diameter Output



FEATURES & BENEFITS

- Available lengths from 0.100" (2.54mm) – 1.000" (25.4mm). (Customizable within the given length range)
- Flat and domed lenses for optimal viewing angle (with water clear or diffused lens finish)
- Press fit mount into 0.121" +0.003/-0.002 (3.07mm) panel mount hole
- Suggested drill size 3.1mm metric drill or #31 drill (0.120")
- Material: water-clear polycarbonate, ROHS compliant UL94-V0, UV stabilized, Halogen-free
- Designed for both single and multiple color surface mount LEDs
- Recommended PLCC-2 and PLCC-4, surface mount LEDs part number: 597-XXXX-207F as shown.

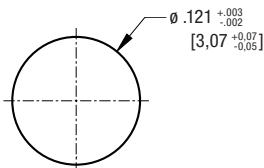
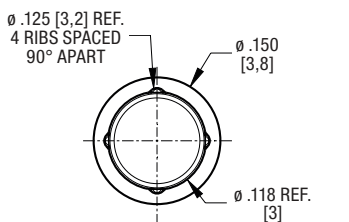
APPLICATION

Dialight's 515 Reverse Mount Optopipe® Light Pipe series offers press fit LP design from rear of panel when working inside of an enclosure with no access to the front of the enclosure. Variable length from .100" thru 1.00" are available with domed or flat lens shapes for back lighting applications of a overlay/symbol or direct view with lens protruding thru the front of panel. These light pipes are used in applications when PCB is always parallel to the panel you are planning to have visible indication on.

MECHANICAL INFORMATION

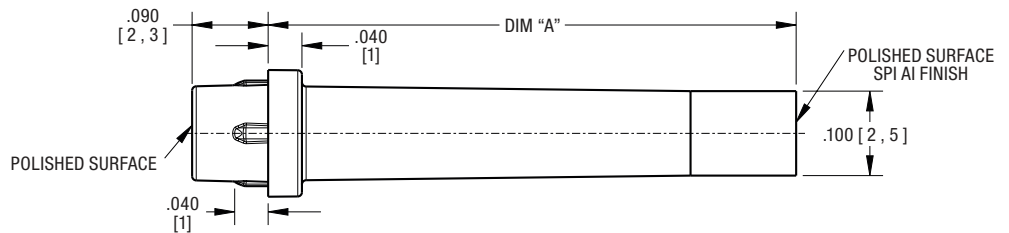
Panel Mounting Hole Size: 0.121" (3.07mm)"
Min. Panel Thickness: .040" (1.00mm)
Operating Temp: -40°C to +100°C
Storage Temp: -40°C to +100°C

DIMENSIONS inches (mm)

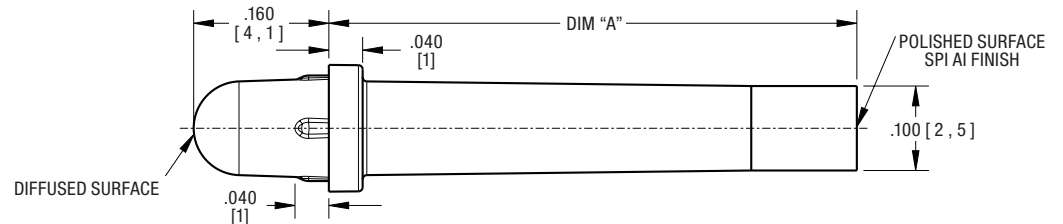


RECOMMENDED MOUNTING HOLE
 PANEL THICKNESS: 0.040" - 0.093"
 to -0.187"

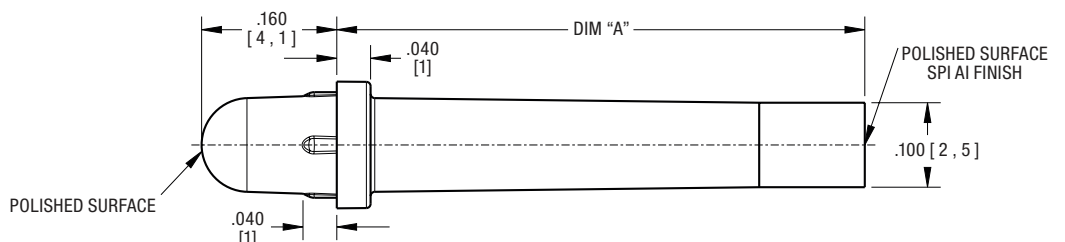
FLAT WATER CLEAR



DOMED DIFFUSED



DOMED WATER CLEAR



FLAT WATER CLEAR

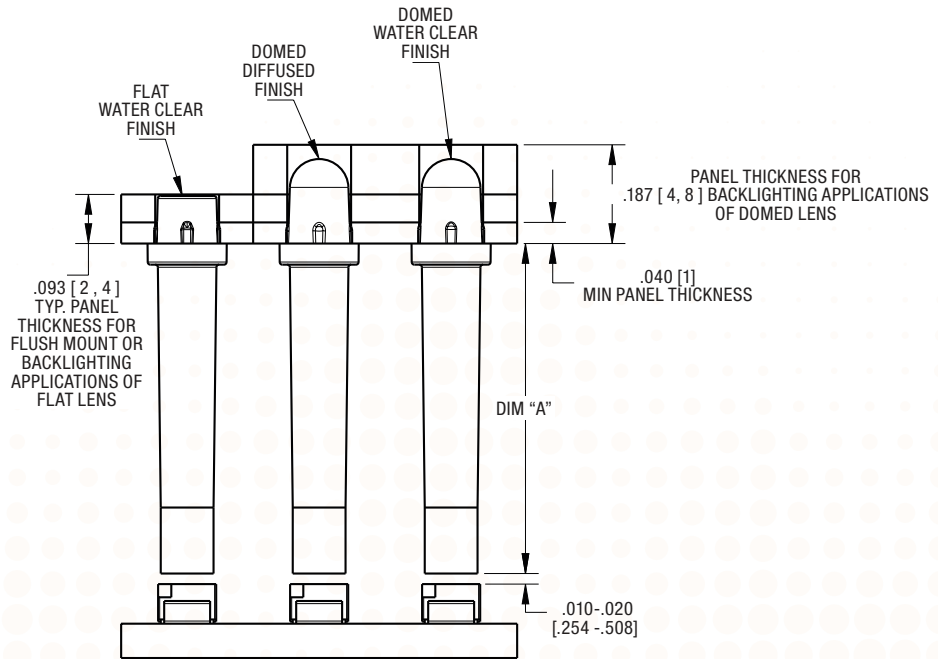
Dialight P/N	Dim "A"
515-1304-0100F	0.100" (2.5mm)
515-1304-0125F	0.125" (3.2mm)
515-1304-0188F	0.188" (4.8mm)
515-1304-0250F	0.250" (6.4mm)
515-1304-0313F	0.313" (7.9mm)
515-1304-0350F	0.350" (8.9mm)
515-1304-0375F	0.375" (9.5mm)
515-1304-0500F	0.500" (12.7mm)
515-1304-0625F	0.625" (15.9mm)
515-1304-0750F	0.750" (19mm)
515-1304-0830F	0.830" (21.1mm)
515-1304-1000F	1.000" (25.4mm)

DOMED DIFFUSED

Dialight P/N	Dim "A"
515-1305-0125F	0.125" (3.2mm)
515-1305-0250F	0.250" (6.4mm)
515-1305-0350F	0.350" (8.9mm)
515-1305-0375F	0.375" (9.5mm)
515-1305-0460F	0.460" (11.7mm)
515-1305-0500F	0.500" (12.7mm)
515-1305-0625F	0.625" (15.9mm)
515-1305-0750F	0.750" (19mm)
515-1305-1000F	1.000" (25.4mm)

DOMED WATER CLEAR

Dialight P/N	Dim "A"
515-1306-0125F	0.125" (3.2mm)
515-1306-0250F	0.250" (6.4mm)
515-1306-0350F	0.350" (8.9mm)
515-1306-0375F	0.375" (9.5mm)
515-1306-0460F	0.460" (11.7mm)
515-1306-0500F	0.500" (12.7mm)
515-1306-0625F	0.625" (15.9mm)
515-1306-0750F	0.750" (19mm)
515-1306-1000F	1.000" (25.4mm)



Dialight reserves the right to make changes at any time in order to supply the best product possible. The most current version of this document will always be available at: www.dialightsignalsandcomponents.com

Warranty Statement: Except for the warranty expressly provided for at: www.dialight.com/resources/warranties/, Dialight disclaims any and all other warranties, express or implied, including, without limitation, any warranties of merchantability, fitness for a particular purpose, title, and noninfringement.