



Technical Data Sheet for TR060-6.5

Single-Stage Thermoelectric Module TRITON ICE™ SERIES



NOMINAL PERFORMANCE IN NITROGEN

Hot Side Temperature (°C)	27	50
ΔT_{max} (°C):	76	86
Q _{max} (watts):	61	66
I _{max} (amps):	6.5	6.5
V _{max} (vdc):	15.8	17.8
AC Resistance (ohms):	2.1	---

PRODUCT FEATURES

- RoHS EU Compliant
- Rated operating temperature of 130°C.
- Ceramic Material: Aluminum Oxide
- Designed for temperature cycling applications.
- Porch configuration for high strength leadwire connection.
- Superior nickel diffusion barriers on elements.
- High strength for rugged environment.
- RTV sealing option available.
- Lapped option available for multiple module applications.

ORDERING OPTIONS

Model Number	Description
TR060-6.5-40-01	Leadwires
TR060-6.5-40-01L	Leadwires, Lapped
TR060-6.5-40-01S	Leadwires, Sealed
TR060-6.5-40-01LS	Leadwires, Lapped, Sealed
TR060-6.5-40-03LS	Leadwires, Lapped, Sealed, Sealed
TR060-6.5-40-04LS	Leadwire Joints, Hi-Pot Tested
TR060-6.5-40-04LS	Leadwires 120mm, Lapped, Sealed

OPERATION CAUTIONS

For maximum reliability, storage and operation below 130°C in a non-condensing environment is recommended. To minimize thermal stress, use linear/proportional temperature control or a similar method rather than an ON/OFF method.

INSTALLATION

Recommended mounting method: Clamp with uniform pressure to a flat surface with thermal interface material. For additional information, please refer to our TEC Installation Guide.

II-VI Marlow – Dallas, TX USA
214-340-4900
877-627-5691
marlow.sales@ii-vi.com

Marlow Industries Europe
GmbH - Germany
+49 (0) 6150 5439 - 403
info@marlow-europe.eu

II-VI Japan Inc.
81 43 297 2693 (tel)
center@ii-vi.co.jp
www.ii-vi.co.jp

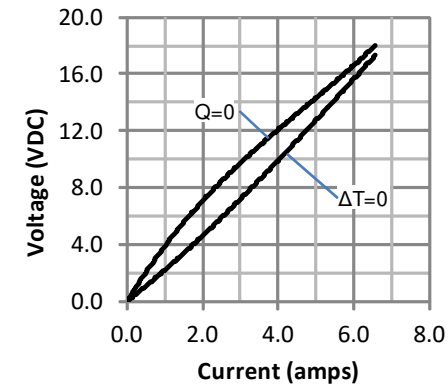
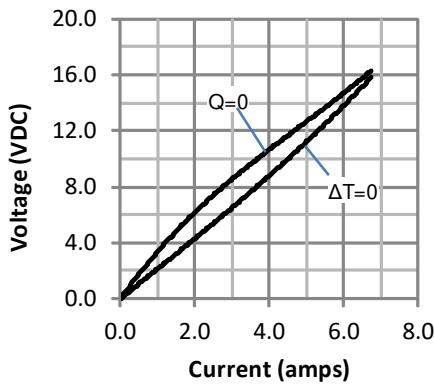
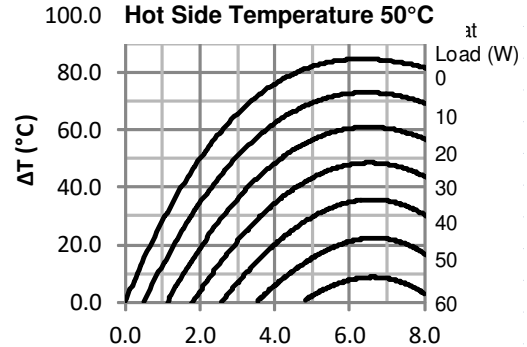
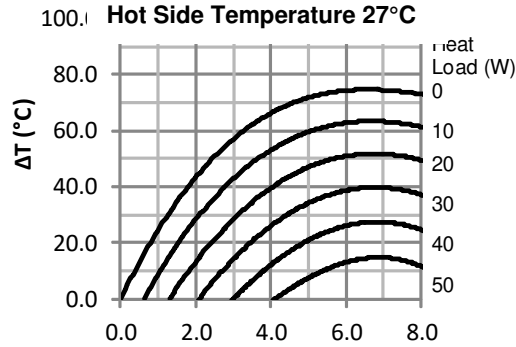
II-VI Singapore Pte., Ltd.
(65) 6481 8215 (tel)
info@ii-vi.com.sg

Marlow Industries China, II-VI
Technologies Beijing
86-10-643 98226
info@iivibj.com



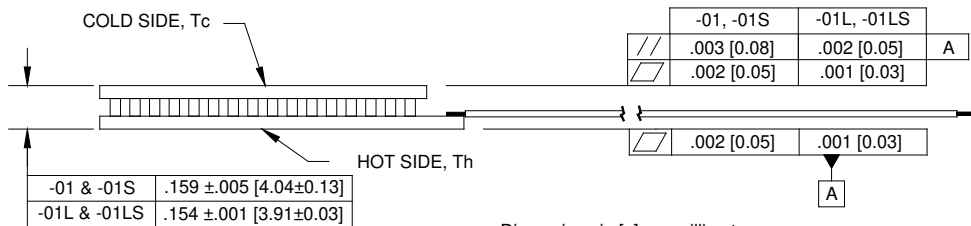
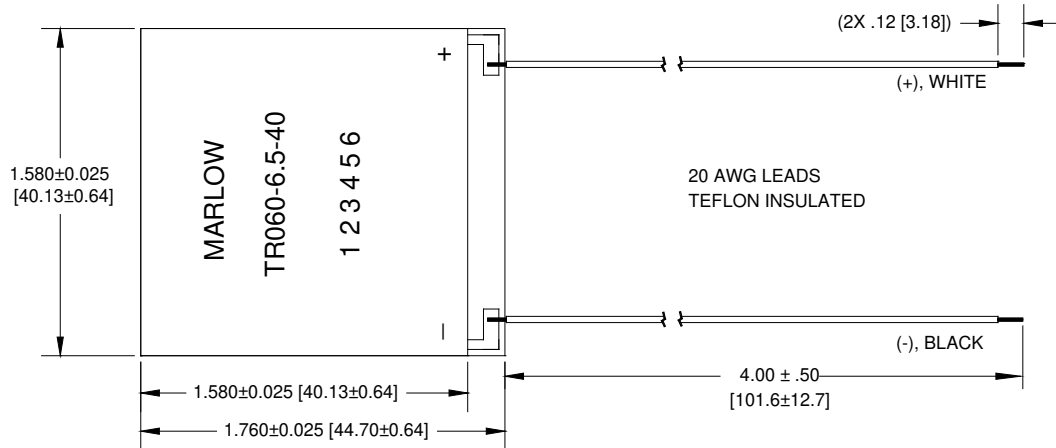
TYPICAL PERFORMANCE CURVES

ENVIRONMENT: ONE ATMOSPHERE DRY NITROGEN



For performance information in a vacuum or with hot side temperatures other than 27°C or 50°C, contact one of our Applications Engineers at 877-627-5691.

MECHANICAL CHARACTERISTICS

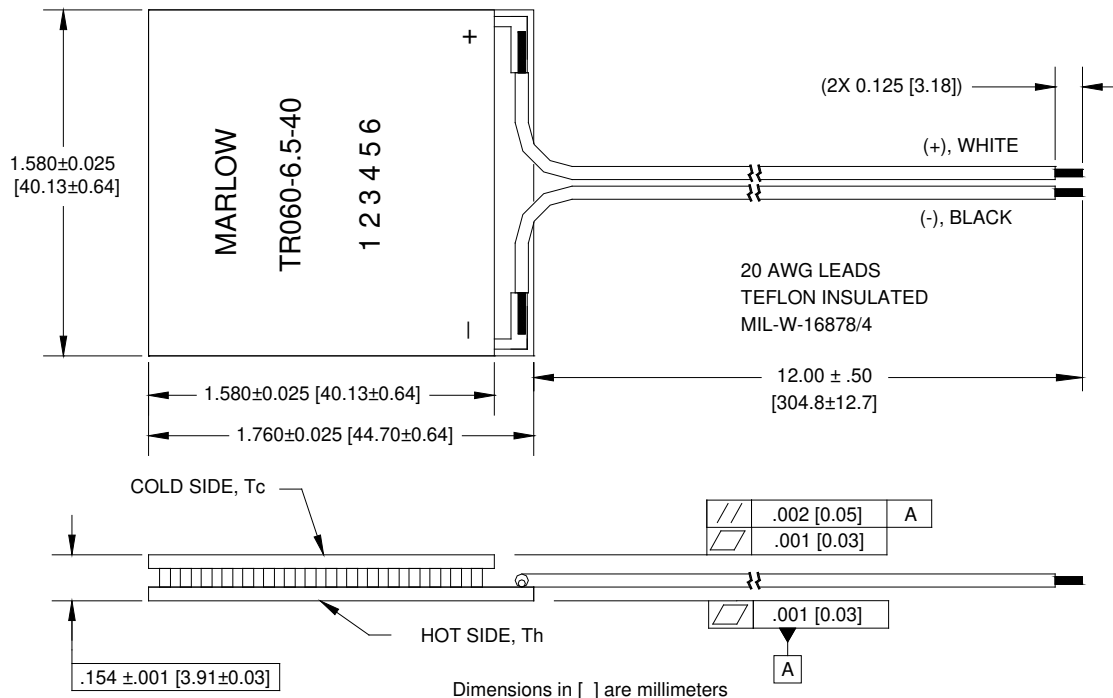


-01, -01L, -01S, -01LS

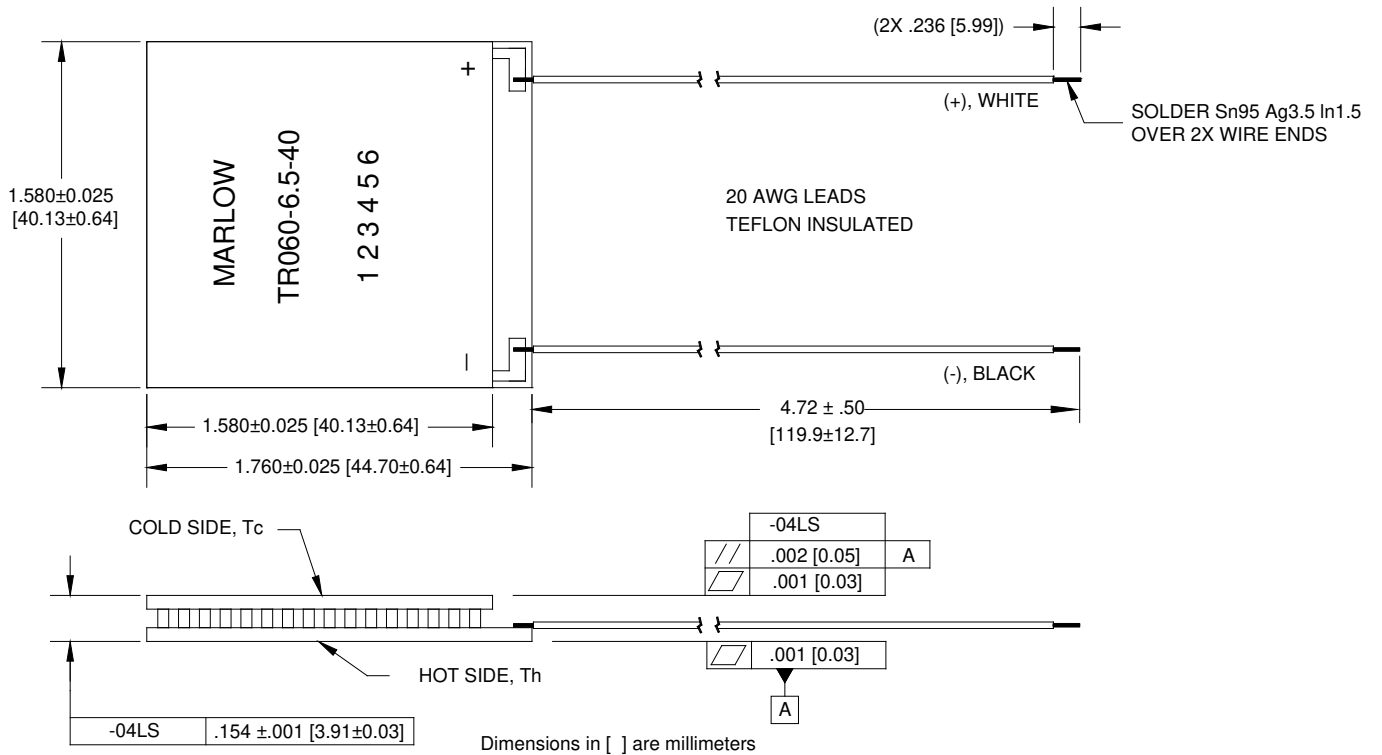
For customer support or general questions please contact a local office or visit our website at www.marlow.com.



MECHANICAL CHARACTERISTICS



-03LS



-04LS

For customer support or general questions please contact a local office or visit our website at www.marlow.com.