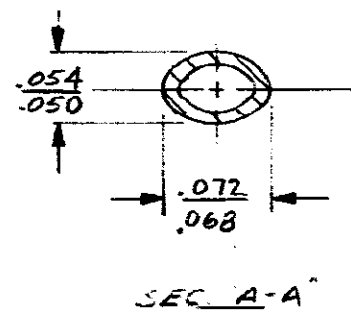
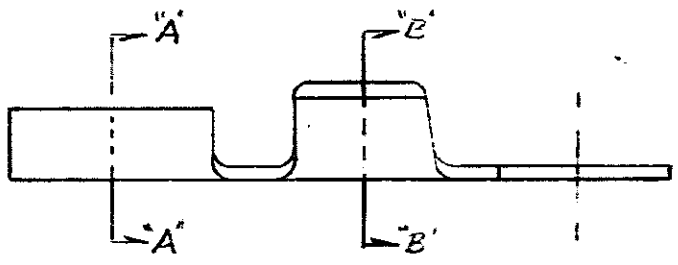
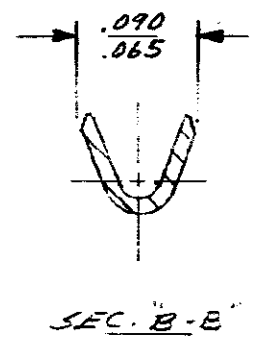
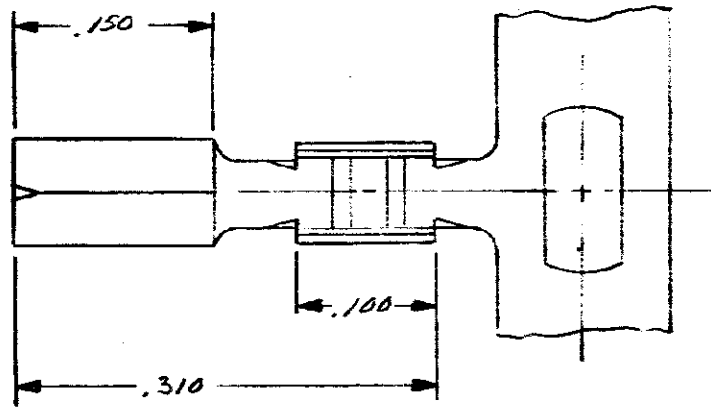


© COPYRIGHT 19 75 BY AMP INCORPORATED, HARRISBURG, PA. ALL INTERNATIONAL RIGHTS RESERVED. AMP INCORPORATED PRODUCTS COVERED BY U. S. AND FOREIGN PATENTS COPY RIGHTS PENDING. UNPUBLISHED COPY RIGHTS REPRODUCED NOR PUBLISHED WITHOUT WRITTEN PERMISSION OF AMP INCORPORATED.

REVISIONS			
LTR	DESCRIPTION	DATE	APPROVED
A	REVISED	4-25-75	[Signature]
B	RELEASED	PAR 7-30-75	[Signature]



CONTINUOUS STRIP ON REELS

#24-#20	62352-1
WIRE SIZE	PART NO

UNLESS OTHERWISE SPECIFIED DIMENSIONS ARE IN INCHES. TOLERANCES ON: DECIMALS ± .015 ANGLES ± 15°

MATERIAL
.010 PHL
BRONZE

FINISH
PRE-TIN

CONTRACT NO
DR [Signature] 317-75
CHK [Signature]
APPD [Signature]
KPPD [Signature]

DSGN APPD
OTHER APPD

AMP INCORPORATED Harrisburg, Pa.		
NAME THE TELEPHONE (.06 x .050)		
SIZE A	CODE IDENT NO 00779	DRAWING NO 62352
SCALE #	TP	SHEET 1-1