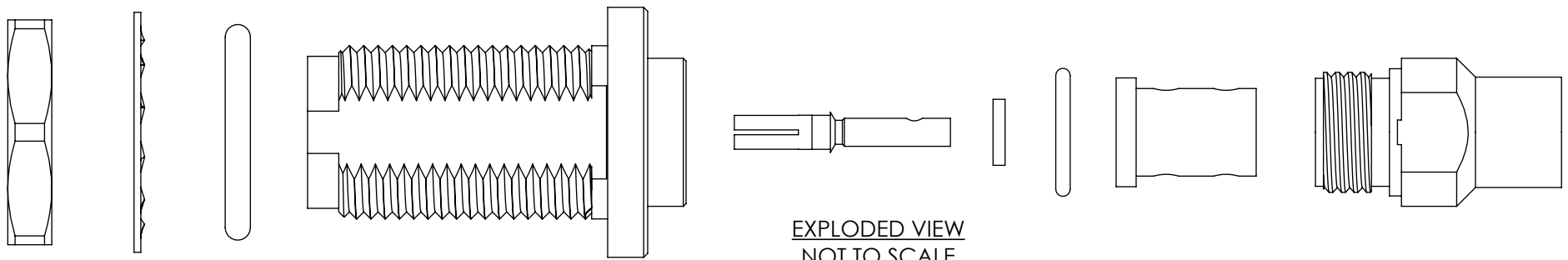
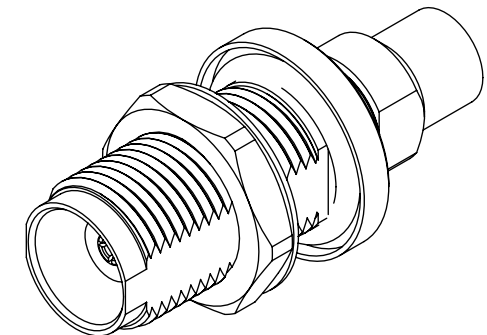
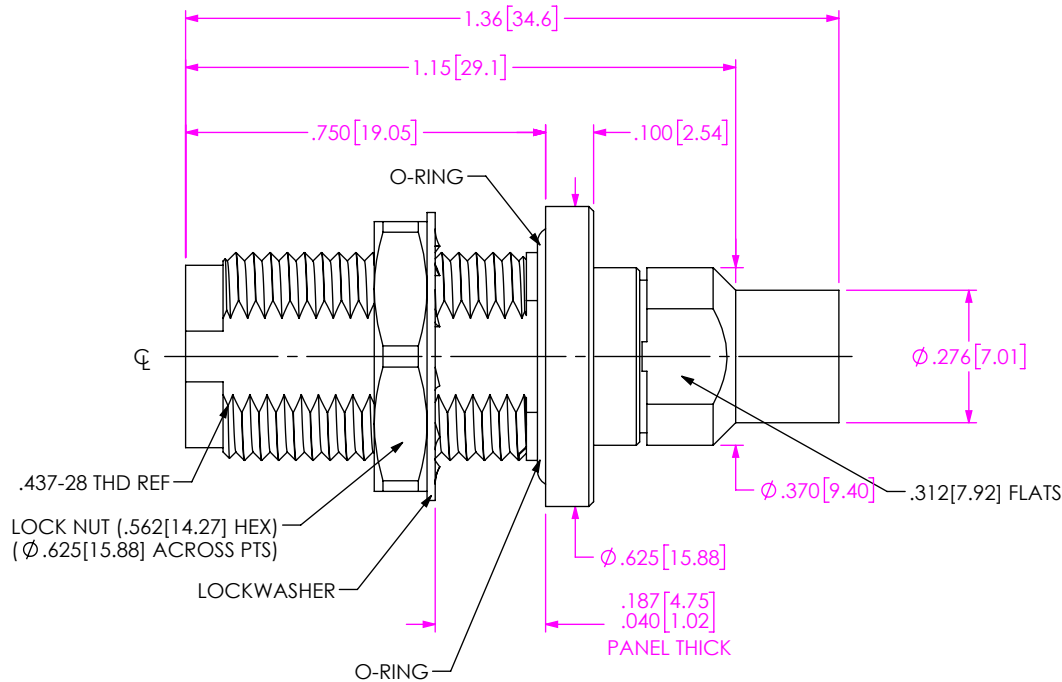


DO NOT SCALE FROM THIS PRINT

DESIGNED & DIMENSIONED IN INCHES[MILLIMETERS]

PRF04-J-C-EP-142-BS

SERIES -04: TNCA
 GENDER -J: JACK
 TYPE -C: CABLE
 TERMINATION -S: SOLDER CLAMP
 ORIENTATION -B: BULKHEAD
 CABLE TYPE -142: HARBOUR LL142
 FINISH -EP: 50µ" EXTRA HEAVY GOLD CENTER CONTACT, PASSIVATED OUTER CONTACT



- NOTES:
- MATERIAL:
 BODY, BUSHING, CLAMP NUT, LOCK WASHER, JAM NUT: STAINLESS STEEL
 CONTACT: BERYLLIUM COPPER
 SOLDER FERRULE: BRASS ALLOY
 INSULATOR: PTFE
 BEAD: PTFE
 O-RINGS: SILICONE RUBBER
 - FINISH:
 BODY, BUSHING, CLAMP NUT, LOCK WASHER, JAM NUT: PASSIVATED
 CONTACT, SOLDER FERRULE: 50µ" MIN. GOLD OVER 50µ" MIN. NICKEL PLATE
 - PCI P/N: 3281

UNLESS OTHERWISE SPECIFIED, DIMENSIONS ARE IN INCHES.
 TOLERANCES ARE:
 DECIMALS ANGLES
 .XX: ±.01 [0.3] 1°
 .XXX: ±.005 [0.13]
 .XXXX: ±.0005 [0.013]

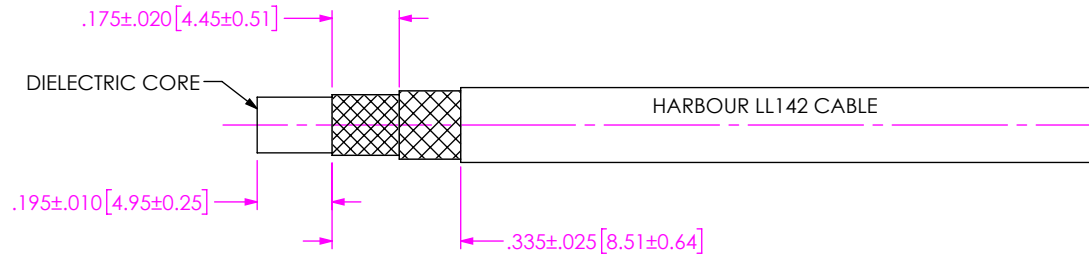
PROPRIETARY NOTE
 THIS DOCUMENT CONTAINS CONFIDENTIAL AND PROPRIETARY INFORMATION AND ALL DESIGN, MANUFACTURING, REPRODUCTION, USE, PATENT RIGHTS AND SALES RIGHTS ARE EXPRESSLY RESERVED BY SAMTEC, INC. THIS DOCUMENT SHALL NOT BE DISCLOSED, IN WHOLE OR PART, TO ANY UNAUTHORIZED PERSON OR ENTITY NOR REPRODUCED, TRANSFERRED OR INCORPORATED IN ANY OTHER PROJECT IN ANY MANNER WITHOUT THE EXPRESS WRITTEN CONSENT OF SAMTEC, INC.

samtec
 520 PARK EAST BLVD, NEW ALBANY, IN 47150
 PHONE: 812-944-6733 FAX: 812-948-5047
 e-Mail info@SAMTEC.com code 55322

DO NOT SCALE DRAWING	SHEET SCALE: 2.5:1	DESCRIPTION: TNCA BULKHEAD JACK FOR HARBOUR LL142 CABLE
DWG. NO. PRF04-J-C-EP-142-BS		
BY: EVE L	05/15/2019	SHEET 1 OF 2

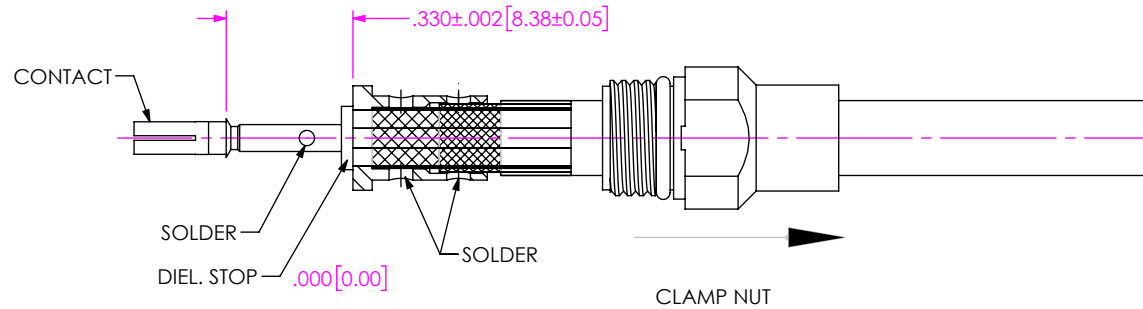
CABLE APPLICATION VIEWS

1A. TRIM CABLE TO EXPOSE DIELECTRIC CORE AND BRAIDS AS SHOWN.



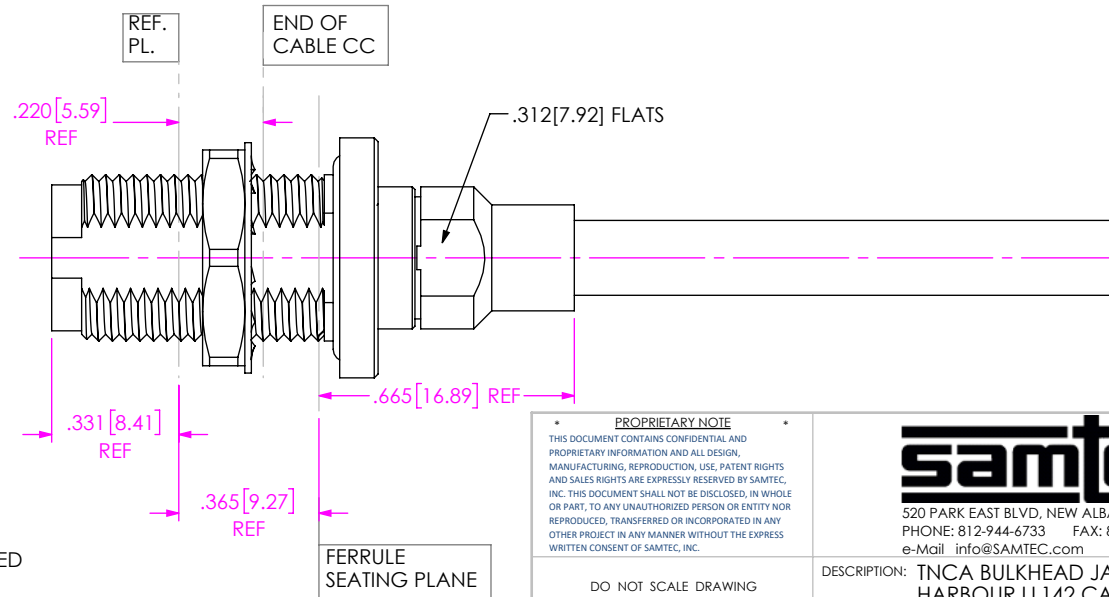
IN-PROCESS VIEW 1

2A. SLIDE CLAMP NUT OVER CABLE AS SHOWN.
 2B. INSERT CABLE INTO FERRULE UNTIL INNER BRAID SEATS AND SOLDER TO FERRULE WHERE SHOWN.
 2C. TRIM DIELECTRIC CORE FLUSH WITH FACE OF SOLDER FERRULE.
 2D. SLIDE DIELECTRIC STOP ONTO CABLE CENTER CONDUCTOR AND SOLDER CONTACT FLUSH TO STOP TO DIMENSION SHOWN.



IN-PROCESS VIEW 2

DISTANCE FROM END OF CABLE CENTER COND. TO REF. PL. IS .220 REF



3A. INSERT CABLE/ CONTACT SUB-ASSEMBLY INTO CONNECTOR UNTIL SEATED AND TIGHTEN CLAMP NUT TO 25-35 IN-LBS.

IN-PROCESS VIEW 3

PROPRIETARY NOTE
 THIS DOCUMENT CONTAINS CONFIDENTIAL AND PROPRIETARY INFORMATION AND ALL DESIGN, MANUFACTURING, REPRODUCTION, USE, PATENT RIGHTS AND SALES RIGHTS ARE EXPRESSLY RESERVED BY SAMTEC, INC. THIS DOCUMENT SHALL NOT BE DISCLOSED, IN WHOLE OR PART, TO ANY UNAUTHORIZED PERSON OR ENTITY NOR REPRODUCED, TRANSFERRED OR INCORPORATED IN ANY OTHER PROJECT IN ANY MANNER WITHOUT THE EXPRESS WRITTEN CONSENT OF SAMTEC, INC.

DO NOT SCALE DRAWING

SHEET SCALE: 2:1



520 PARK EAST BLVD, NEW ALBANY, IN 47150
 PHONE: 812-944-6733 FAX: 812-948-5047
 e-Mail: info@SAMTEC.com code 55322

DESCRIPTION: TNCA BULKHEAD JACK FOR HARBOUR LL142 CABLE

DWG. NO. PRF04-J-C-EP-142-BS

BY: EVE L 05/15/2019 SHEET 2 OF 2