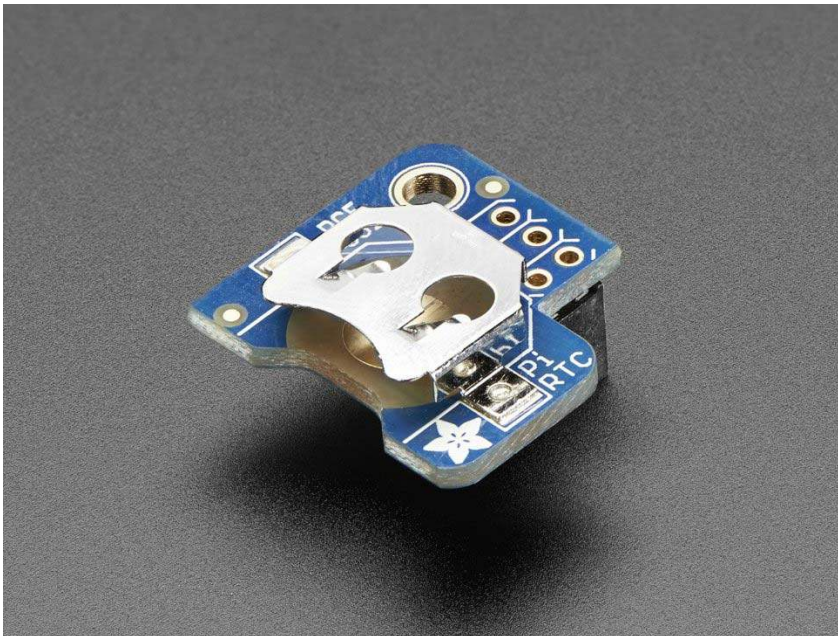




# Adafruit PiRTC - PCF8523 Real Time Clock for Raspberry Pi

PRODUCT ID: 3386



## . Description

This is a great battery-backed real time clock (RTC) that allows your Raspberry Pi project to keep track of time if the power is lost. Perfect for data-logging, clock-building, time-stamping, timers and alarms, etc. Equipped with **PCF8523** RTC, it works great with the Raspberry Pi and has native kernel support.

Works perfectly with any Raspberry Pi (or similar single board linux computer) including the Pi 1, Pi 2, Pi 3, Pi Zero, A+, B+ etc.

- Fully assembled & tested PCB plugs directly into your Pi's GPIO pins - **No soldering required!**
- Will keep time for 5 years or more

**Note: This product does not come with a CR1220 coin cell battery.** We recommend you purchase a coin cell battery to use with this product.

The PCF8523 is simple and inexpensive but not a high precision device. It may lose or gain a second or two per day. For a high-precision, temperature compensated alternative, please check out the DS3231 precision RTC.

## . **Technical Details**

Product Dimensions: 21.0mm x 20.0mm x 12.0mm / 0.8" x 0.8" x 0.5"

Product Weight: 2.2g / 0.1oz