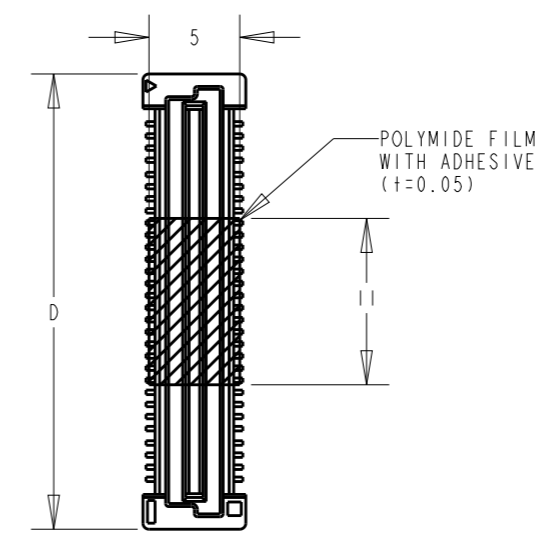
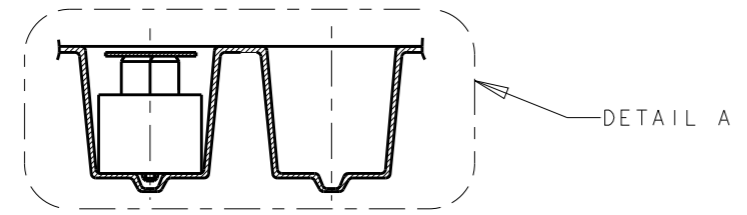
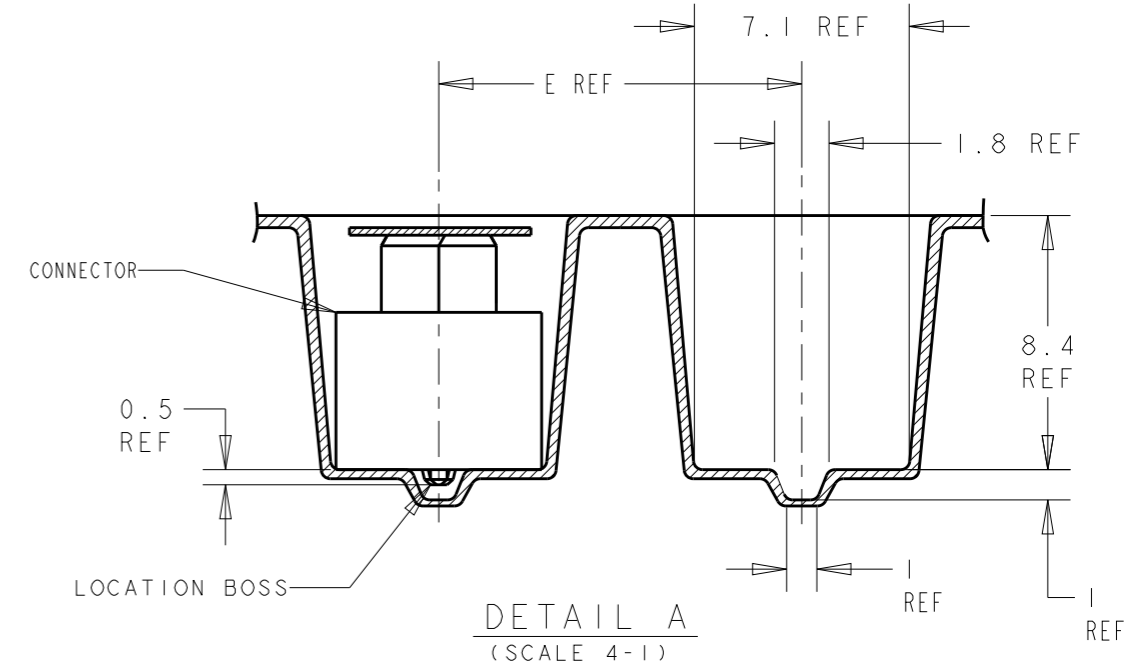
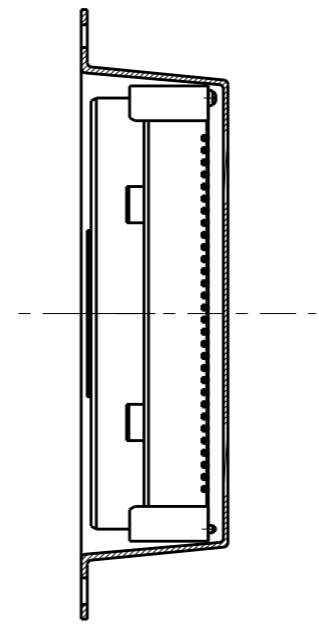
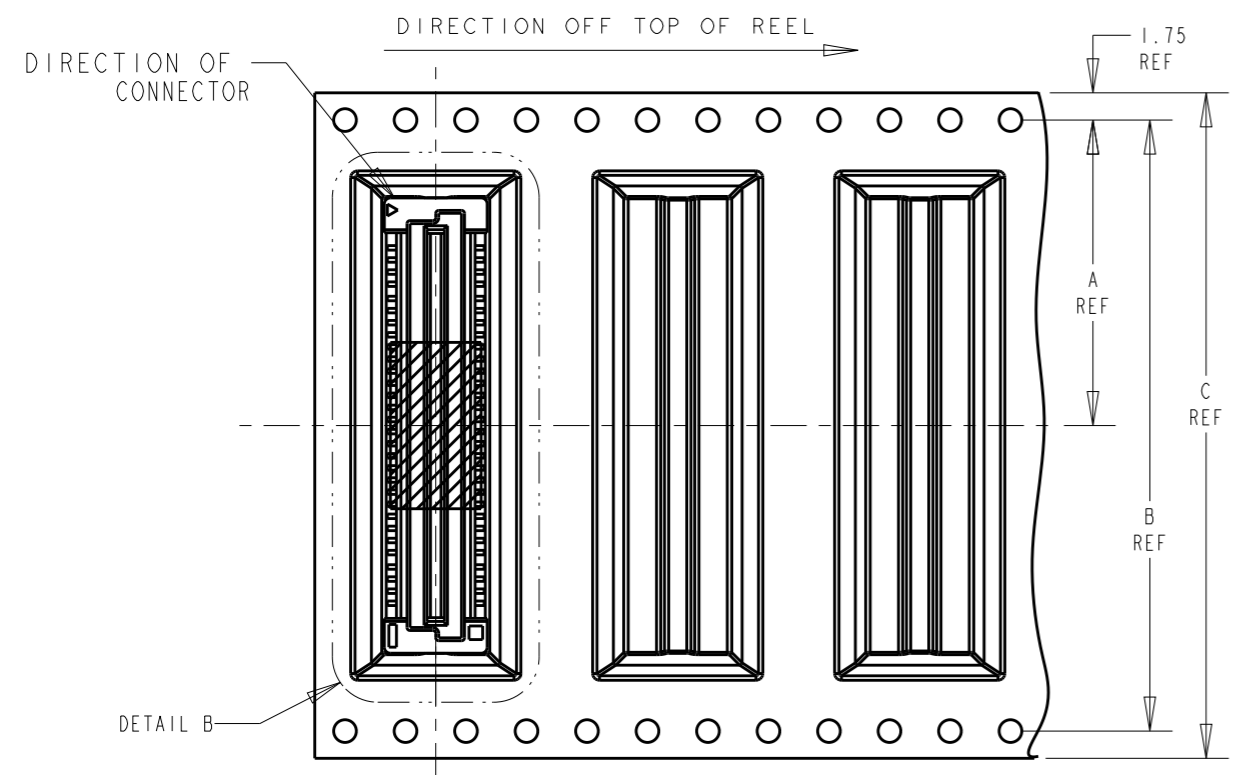
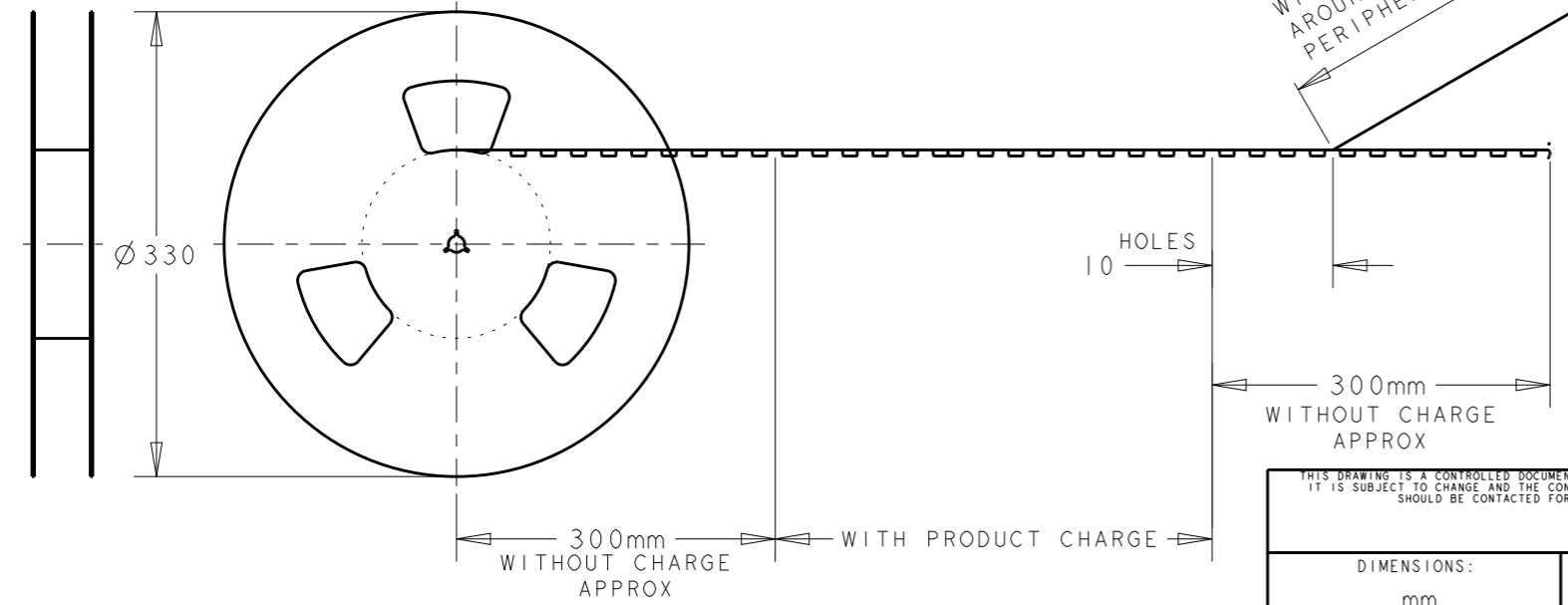


THIS DRAWING IS UNPUBLISHED. RELEASED FOR PUBLICATION
 © COPYRIGHT BY TYCO ELECTRONICS CORPORATION. ALL RIGHTS RESERVED.

LOC	DIST	REVISIONS					
DY	-	P	LTR	DESCRIPTION	DATE	DWN	APVD
			AI	REVISED PER ECO-17-018857	14DEC2017	R.L	H.L



NOTES:
 1 MATERIAL:
 HOUSING: HIGH TEMP THERMOPLASTICS UL94-V0
 CONTACTS: COPPER ALLOY
 2 FINISH:
 UNDERPLATE: 1.3um MIN NICKEL
 MATING AREA: 0.2um MIN AU
 SOLDERTAIL: 2.0um MIN TIN-LEAD



NOT AVAILABLE	400	9H	16	53.8	72	68.4	34.2	120	1735435-5
AVAILABLE	400	9H	16	45.8	72	68.4	34.2	100	1735435-4
NOT AVAILABLE	500	9H	12	29.8	44	40.4	20.2	60	1735435-2
AVAILABLE	500	9H	12	21.8	32	28.4	14.2	40	1735435-1
REMARKS	QTY	HEIGHT TYPE	E	D	C	B	A	POS	PART NO.

THIS DRAWING IS A CONTROLLED DOCUMENT FOR TYCO ELECTRONICS CORPORATION. IT IS SUBJECT TO CHANGE AND THE CONTROLLING ENGINEERING ORGANIZATION SHOULD BE CONTACTED FOR THE LATEST REVISION.

DWN WYLEE 18MAY2007
 CHK YJ SEE
 APVD SF LEONG
 PRODUCT SPEC 108-5390
 APPLICATION SPEC 114-5254
 WEIGHT -

Tyco Electronics Singapore Pte. Ltd.

NAME RECEPTACLE ASSY FOR 0.8 FH BTB CONN. 9mm HEIGHT (0.5mm BOSS LENGTH), ON EMBOSS TAPING WITH POLYIMIDE FILM, LF

SIZE A3	CAGE CODE 00779	DRAWING NO G-1735435	RESTRICTED TO
---------	-----------------	----------------------	---------------

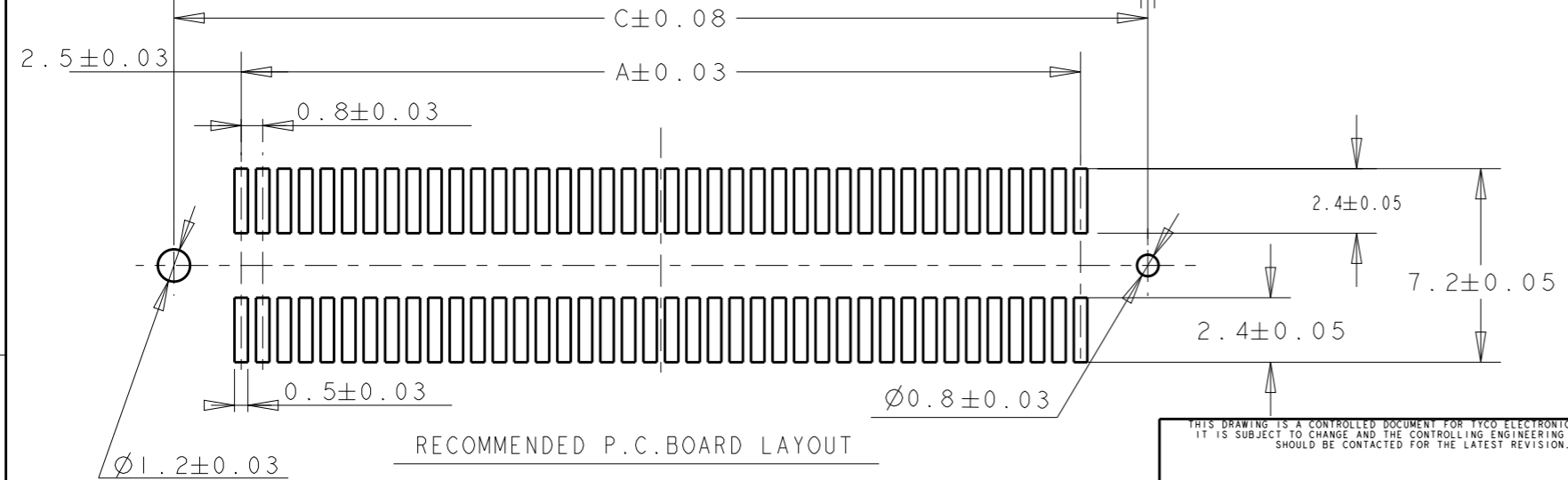
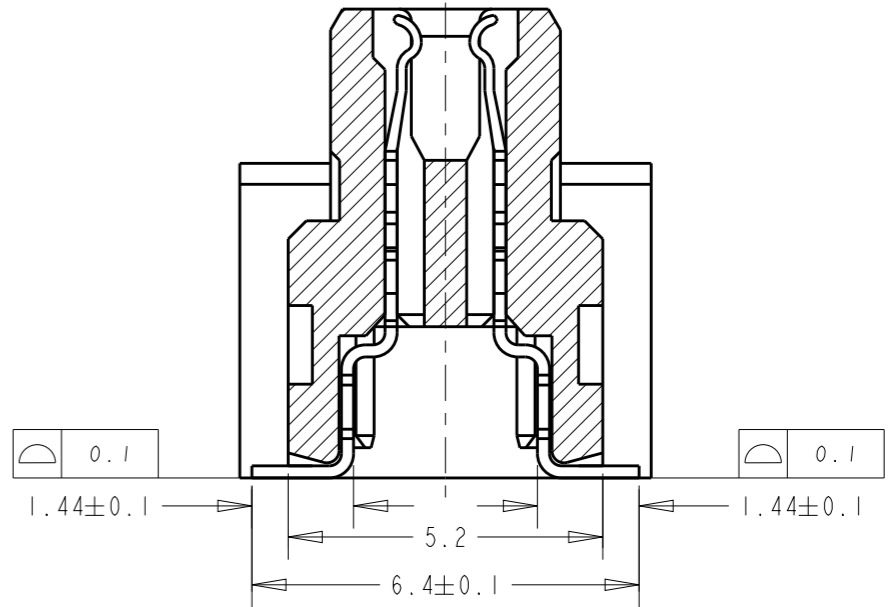
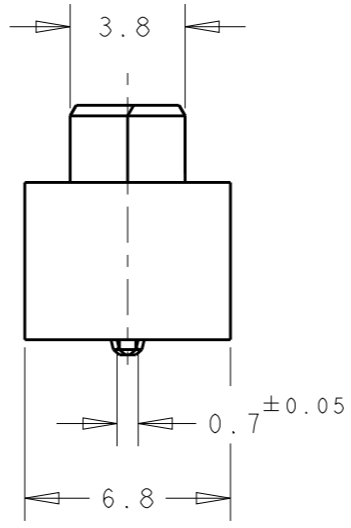
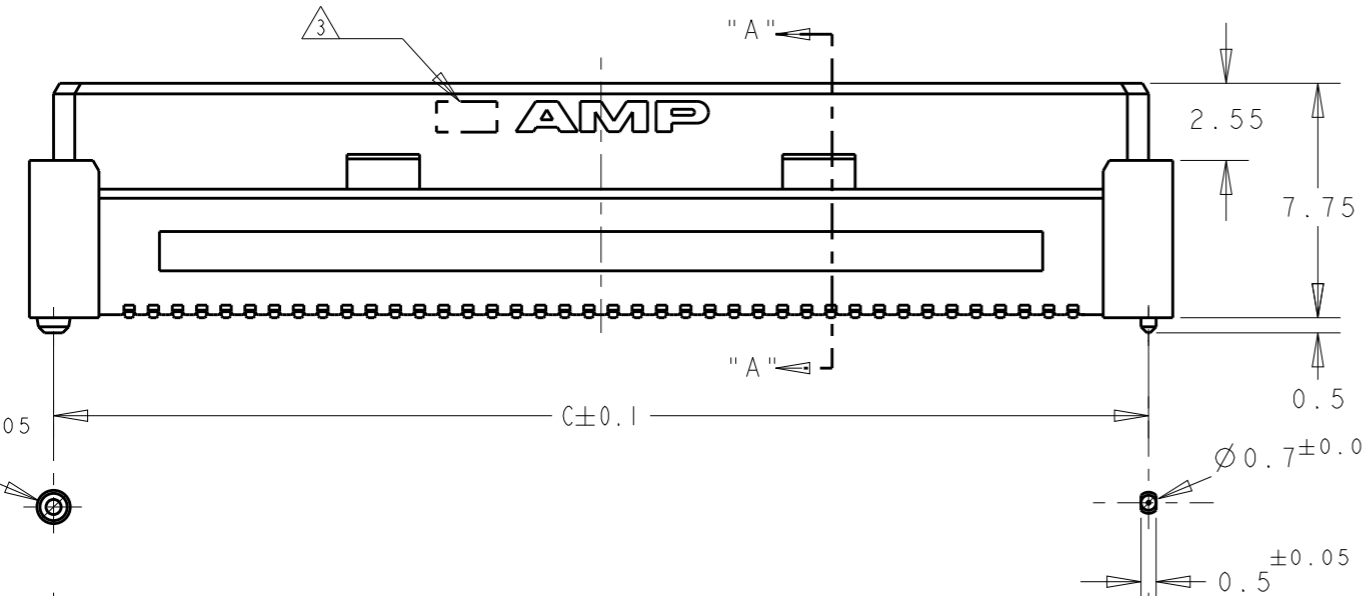
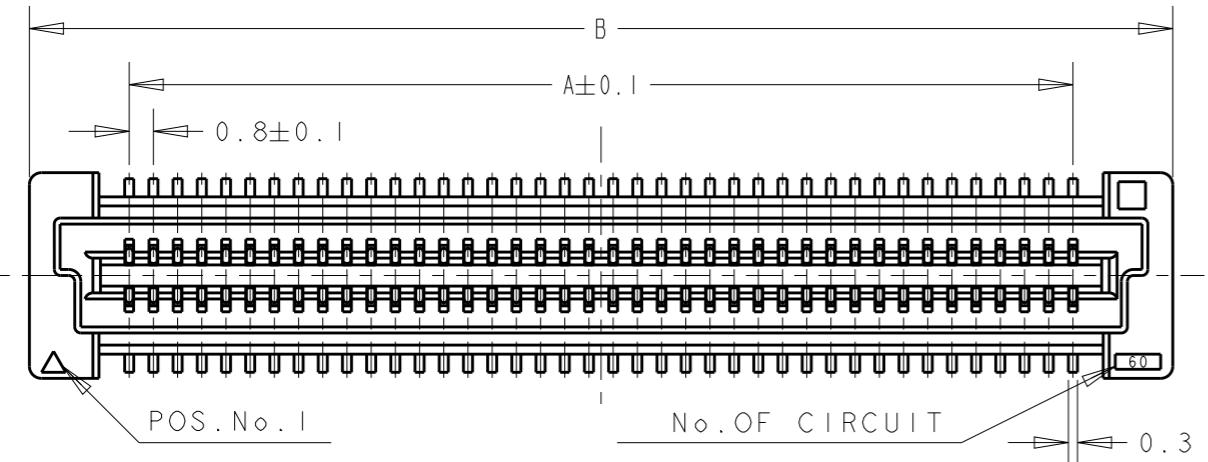
CUSTOMER DRAWING SCALE 2:1 SHEET 1 OF 2 REV AI

DIMENSIONS:		TOLERANCES UNLESS OTHERWISE SPECIFIED:	
mm			
	0 PLC	±	-
	1 PLC	±	0.3
	2 PLC	±	0.25
	3 PLC	±	0.2
	4 PLC	±	-
	ANGLES	±	3°
MATERIAL	1	FINISH	2

(AI) ADD CONNECTOR INFORMATION SHEET

LOC DY	DIST -	REVISIONS			
P	LTR	DESCRIPTION	DATE	DWN	APVD
		SEE SHEET 1			

LOW HALOGEN



52.20	53.80	47.20	120	-5
44.20	45.80	39.20	100	-4
28.20	29.80	23.20	60	-2
20.20	21.80	15.20	40	1735435-1
C	B	A	POS.	PART No.

- NOTES:
- 1 MATERIAL: HOUSING: L.C.P. (HIGH TEMP. THERMOPLASTIC)
UL 94V-0, NATURAL.
CONTACT: BERYLIUM COPPER.
 - 2 FINISH: CONTACT AREA: 0.0002 MIN GOLD ON
0.0013 MIN ALL OVER NICKEL.
SOLDERING AREA: 0.002 MIN MATTE-TIN
 - 3 MANUFACTURE PLANT LOCATION MARK. QINGDAO:

THIS DRAWING IS A CONTROLLED DOCUMENT FOR TYCO ELECTRONICS CORPORATION
 IT IS SUBJECT TO CHANGE AND THE CONTROLLING ENGINEERING ORGANIZATION
 SHOULD BE CONTACTED FOR THE LATEST REVISION.

DIMENSIONS: mm	TOLERANCES UNLESS OTHERWISE SPECIFIED:
	0 PLC ± -
	1 PLC ± 0.3
	2 PLC ± 0.25
	3 PLC ± 0.2
	4 PLC ± -
	ANGLES ± 3°
MATERIAL	FINISH

DWN WYLEE	18MAY2007
CHK YJ SEE	
APVD SF LEONG	
PRODUCT SPEC 108-5390	
APPLICATION SPEC 114-5254	
WEIGHT -	
CUSTOMER DRAWING	

		Tyco Electronics Singapore Pte. Ltd.	
NAME RECEPTACLE ASSY FOR 0.8 FH BTB CONN. 9mm HEIGHT (0.5mm BOSS LENGTH), ON EMBOSS TAPING WITH POLYIMIDE FILM, LF			
SIZE A3	CAGE CODE 00779	DRAWING NO G-1735435	RESTRICTED TO
SCALE 2:1		SHEET 2 OF 2	REV A1