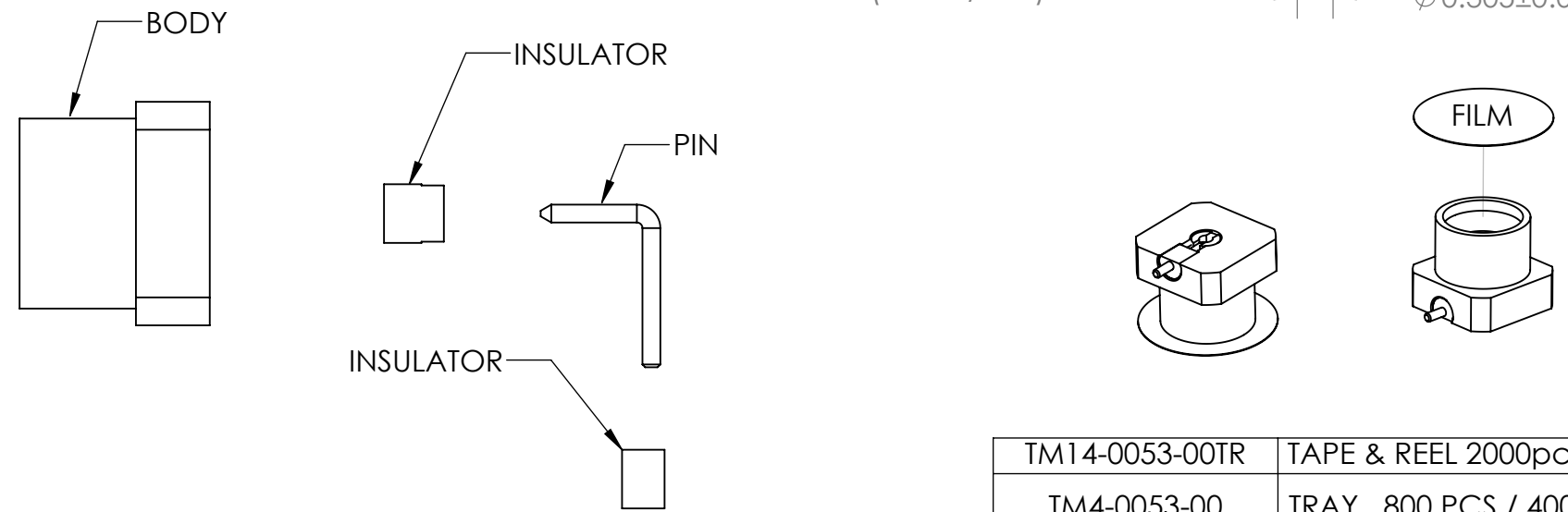
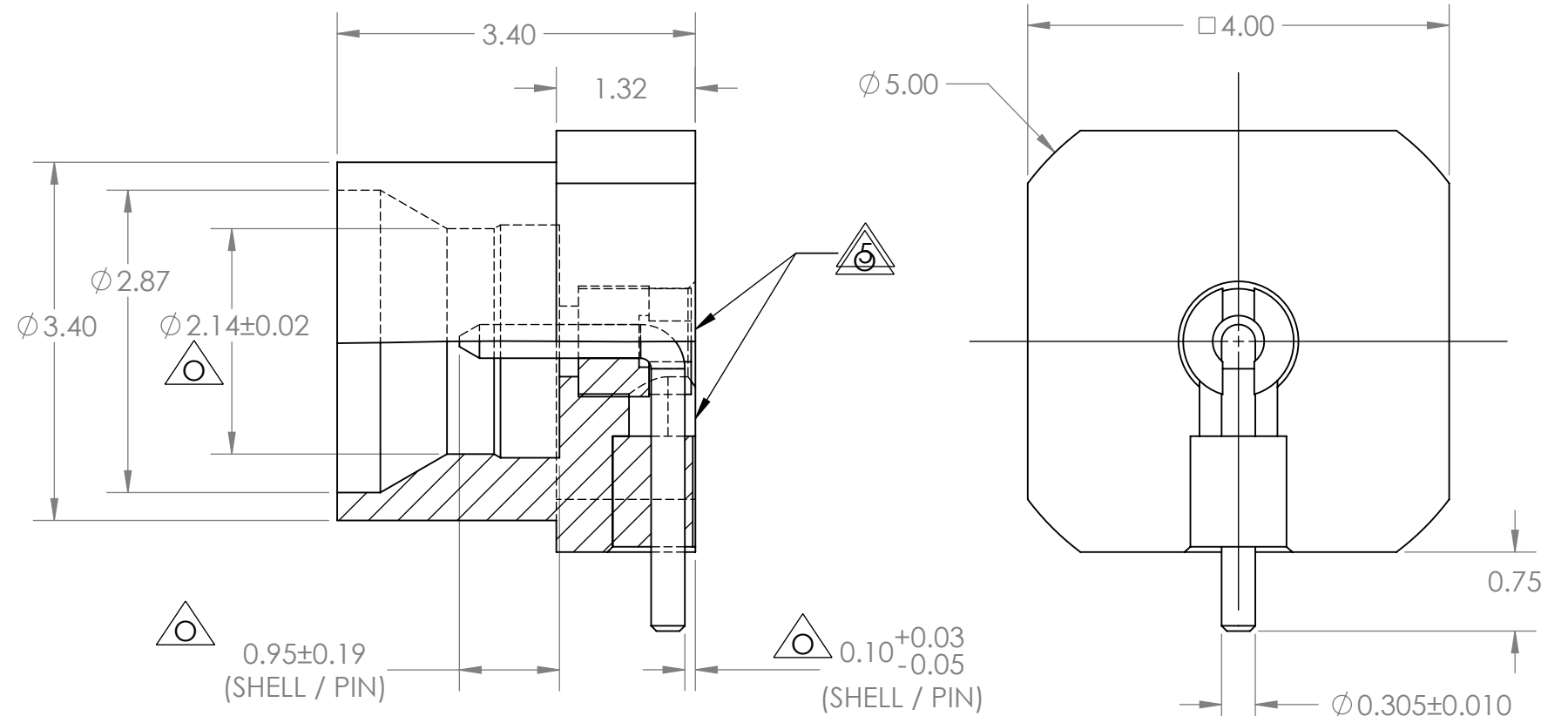
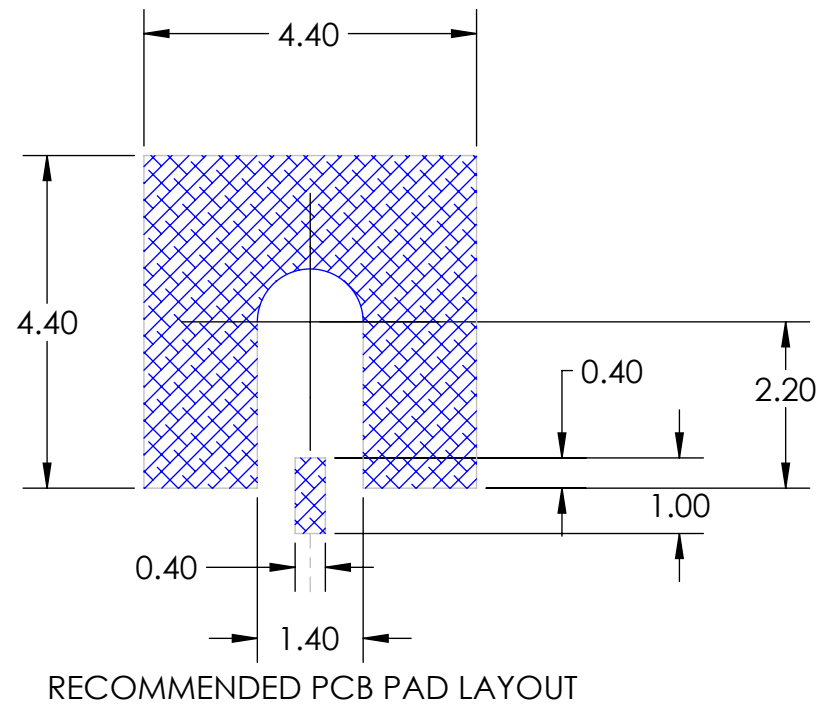


SPECIFICATIONS:
ELECTRICAL RATINGS...

IMPEDANCE	50 Ohm
FREQUENCY RANGE	DC TO 65 GHz
RETURN LOSS	≥ 19 dB, DC TO 26.5 GHz ≥ 13 dB, 26.5 TO 40 GHz ≥ 9 dB, 40 to 60 GHz
INSERTION LOSS	$> 0.05 \times \text{sqr root } f(\text{GHz})$, DC TO 26.5 GHz
INSULATION RESISTANCE	$\geq 5G\Omega$
CONTACT RESISTANCE	
CENTER CONTACT	$\leq 6.0m\Omega$
OUTER CONTACT	$\leq 2.0 m\Omega$
WORKING VOLTAGE (AT SEA LEVEL)	325 V rms
(AT 70000 FEET)	125 V rms

REVISIONS			
REV.	DESCRIPTION	DATE	APPROVED
A	INITIAL RELEASE	2/7/2018	R BEDIENT
B	UPDATE ELECT DATA	8/2/2019	R BEDIENT



- 5. POSITION INSULATOR FLUSH TO SHELL 0.00~0.05mm
- 4. THESE CHARACTERISTICS ARE TYPICAL AND FOR REFERENCE

3. REPRESENTS A CRITICAL DIMENSION

2. PARTS TO BE PACKAGED IN TRAYS

1. MATERIALS:
INSULATORS: TEFLON WHITE

PIN: BRASS C3602B Cu 0.30 μ m, Ni 50 μ m, Au 0.30 μ m

BODY: BRASS C3604B Cu 0.30 μ m, Ni 50 μ m, Au 0.30 μ m

FILM: POLYIMIDE (BROWN)

NOTES: UNLESS OTHERWISE SPECIFIED...

THE INFORMATION CONTAINED HEREIN IS PROPRIETARY TO CARLISLE, INC. AND SHALL IN NO WAY BE REPRODUCED OR DISCLOSED IN WHOLE OR IN PART OR USED FOR ANY DESIGN OR MANUFACTURE EXCEPT WHEN SUCH USER POSSESSES DIRECT, WRITTEN AUTHORIZATION FROM CARLISLE, INC.



TM14-0053-00TR	TAPE & REEL 2000pcs / REEL
TM4-0053-00	TRAY , 800 PCS / 400 HOLES
PART NO.	PACKING

DHZ53-10019-12020

DO NOT SCALE DRAWING			
UNLESS OTHERWISE SPECIFIED DIMENSION ARE IN MM TOLERANCES ARE:	APPROVALS	DATE	7911 188th ST SUITE #100 Kent, WA 98032
.X` .25	DRAWN BY	02/06/18	SMPM STR, PLUG R/A CONTACT, SMT RECEPTICAL (FULL DETENT)
.XX` .13	ENGINEER	02/06/18	
ANGLES` ±1.0°	PRODUCTION		SIZE
SURF FINISH = √40	QUALITY		CAGE CODE
			B 7M294
			DRAWING NUMBER
			TM14-0053-XX
			REV
			B
			SCALE: 16:1
			PART NUMBER: TM14-0053-XX
			1 OF 1