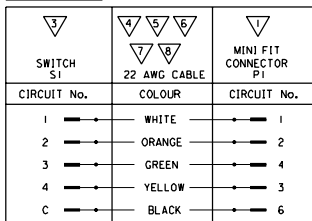


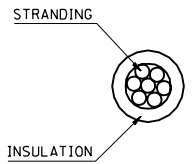
BILL OF MATERIALS

NO.	QTY	SUPPLIER	DESCRIPTION	PART No.	NOTE
1	1	MOLEX	MINI FIT CONNECTOR HOUSING RECEPTACLE	43025-0600	2
2	6	MOLEX	FEMALE TERMINAL	43030-0001	
3	1	C & K	SWITCH	Y6378	2, 5
4	1	MOLEX	22 AWG CABLE, UL - 1007 BLACK	99036-0196	3, 4
5	1	MOLEX	22 AWG CABLE, UL - 1007 ORANGE	99036-0193	3, 4
6	1	MOLEX	22 AWG CABLE, UL - 1007 GREEN	99036-0219	3, 4
7	1	MOLEX	22 AWG CABLE, UL - 1007 WHITE	99036-0220	3, 4
8	1	MOLEX	22 AWG CABLE, UL - 1007 YELLOW	99036-0221	3, 4
9	1	BRADY	LABEL	THT-9-427-10	4, 5
10	2	BRADY	LABEL	THT-11-423-10	2, 5
11	2	MOLEX	CABLE TIE	90848-0018	3
12	5	MOLEX	HEAT SHRINK	90848-0136	

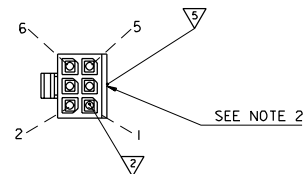
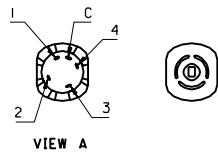
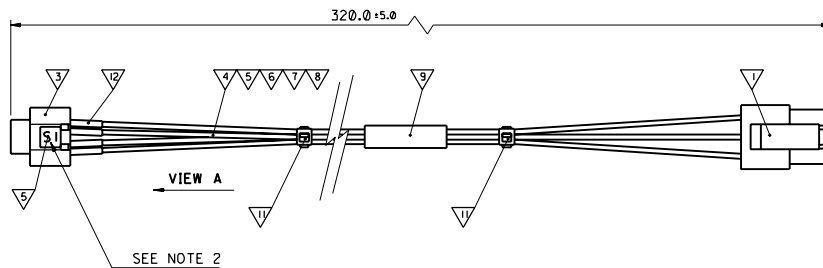
WIRING DIAGRAM:



CABLE SPECIFICATION:



CONDUCTOR:	
- MATERIAL	TINNED CU.
- A.W.G	22
- STRANDING QTY/GAUGE	7/30
INSULATION: INNER	
- MATERIAL	PVC
- NOM WALL THICKNESS	0.38
- COLOUR	ORANGE, WHITE, GREEN, YELLOW & BLACK
- OUTSIDE DIAMETER	1.57±0.1mm
U.L. RATING:	
- STYLE	UL - 1007
- FLAME RATING	VW-1
ELECTRICAL SPECIFICATION:	
- VOLTAGE RATING	300 V
ENVIRONMENTAL SPEC:	
- TEMPERATURE RATING	80° C



NOTES:

- HARNESS TO BE 100% ELECTRICALLY TESTED.
- PLACE LABEL P1 ON SIDE OF CONNECTORS AS SHOWN ABOVE. PLACE LABEL S1 ON SWITCH AS SHOWN ABOVE.
- TIE WRAPS TO BE EQUALLY SPACED AS REQUIRED TO ENSURE PROPER CABLE BUNDLING.
- THE FOLLOWING INFORMATION HAS TO BE PRINTED ON THE LABEL AND PLACED ON THE CABLE WHERE SHOWN: P/N - 530-2527-01, REV - 50, VENDOR CODE - M02451, DATE CODE - WEEK No. AND YEAR eg. 0899 AND Assembled In Slovakia.
- SUPPLIER OR CUSTOMER APPROVED EQUIVALENT.
- PACKAGING: PARTS ARE TO BE PACKED 5 PER BAG.
- ATTACH UL LABEL TO EVERY BOX.

ORIGINAL RELEASE EC No. E90340 DRAWN: D.RYAN 99/04/02 CHK: / / APPR: / / REV: A I	QUALITY SYMBOLS MAJOR DESCRIPTION CRITICAL C	GENERAL TOLERANCES: (UNLESS SPECIFIED)		SCALE 1:1	DESIGN UNITS mm INCH	THIRD ANGLE PROJECTION	DIMENSIONS: mm INCH mm ONLY	SHT	REV			
		4 PLACES ±0.1 ±.	3 PLACES ±0.1 ±.	2 PLACES ±0.1 ±.	1 PLACE ±0.1 ±.	ANGULAR: ± 1/2°	DRAWN BY & DATE D.RYAN 99/02/25	CHECKED BY & DATE J.HORGAN 99/02/25	APPROVED BY & DATE MWILHITE 99/02/25	CAD FILENAME S9200152.DGN	MATERIAL NO. 92001-0052	DRAWING NO. SD-92001-093
DRAFT WHERE APPLICABLE MUST REMAIN WITHIN DIMENSIONS												
THIS DRAWING CONTAINS INFORMATION THAT IS PROPRIETARY TO MOLEX INCORPORATED AND SHOULD NOT BE USED WITHOUT WRITTEN PERMISSION.												

PART NO 92001-0052
DWG NO SD-92001-093