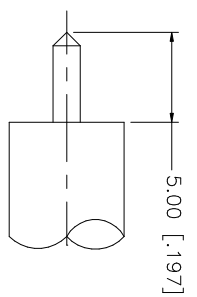
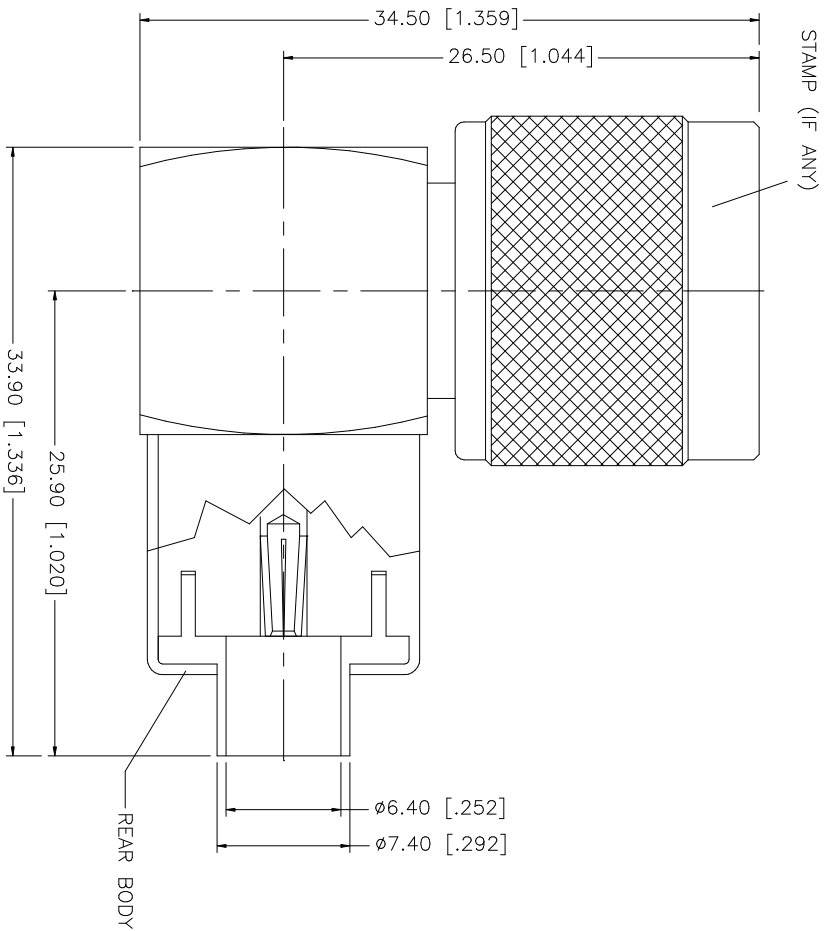


REV.	DATE	DESCRIPTION
A	12/09/03	UPDATE DRAWING FORMAT
B	01/18/06	MODIFY BACK END OF BODY/BARREL
C	08/30/06	ADD REAR BODY PLATING TO GOLD



NO.	DESCRIPTION	MATERIAL	FINISH	QTY
8				
7				
6				
5	INSULATOR	TEFLON	NATURAL	1
4	CONTACT PIN	PHOS. BRONZE	GOLD	1
3	REAR BODY	BRASS	GOLD	1
2	BODY	BRASS	NEXCOTE	1
1				

UNLESS OTHERWISE SPECIFIED DIMENSIONS ARE IN MILLIMETERS DIMENSIONS IN PARENS ARE IN INCHES AND FOR SUBSTITUTED EQUIVALENT STOCK.	
TOLERANCES FOR MILLIMETERS ARE:	
0.5 - 8mm	± 0.20mm
8 - 30mm	± 0.40mm
30 - 120mm	± 0.50mm
UNLESS OTHERWISE SPECIFIED TOLERANCES FOR INCHES ARE:	
.020 - .315	± 0.007"
.315 - 1.180	± 0.015"
1.180 - 4.724	± 0.020"
DO NOT SCALE DRAWING	

APPROVALS	DATE
DRAWN G.R.S.	08/30/06
CHECKED	
ISSUED	
SHEET 1 OF 1	

PART NO.	1722266
DWG. NO.	1722266.DWG
REV.	C
SIZE	A
SCALE	NA

Amphenol Connex

N R/A DIRECT SOLDER PLUG
(FOR .250 SEMI RIGID CABLE)