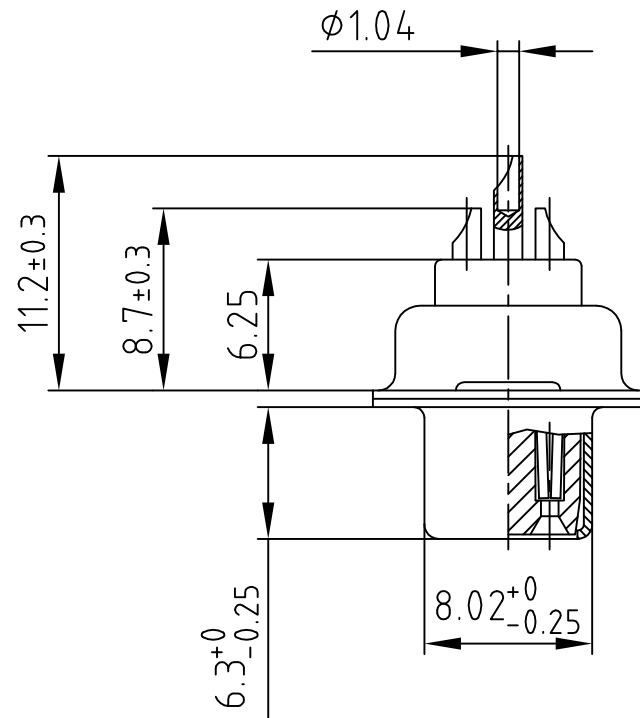
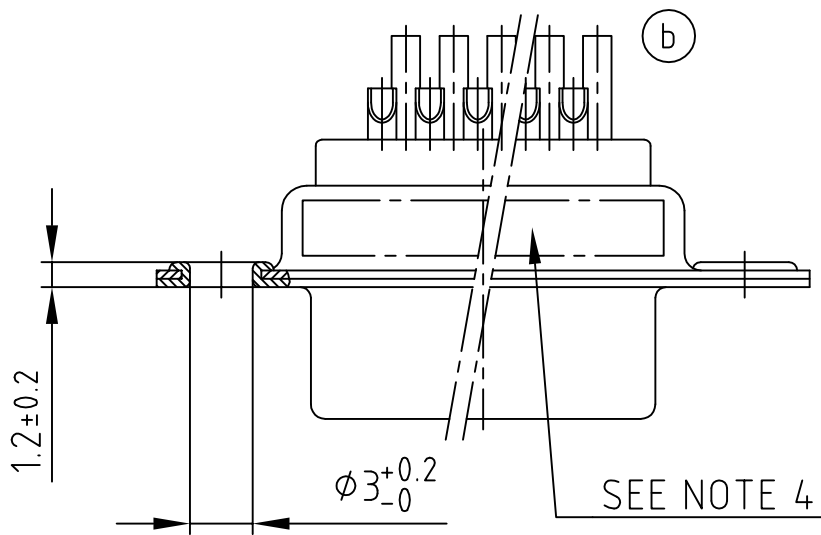
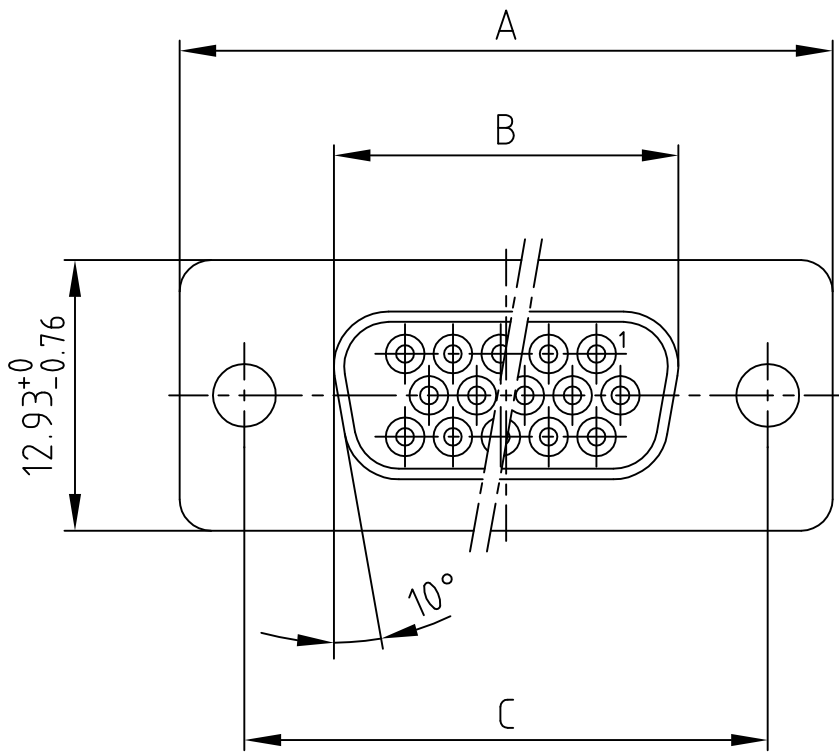


used for: D-SUB HD

Part NO.	POS.	A -0.76	B -0.25	C
164A17009X	15	31.19	16.46	25.00 $^{+0.12}_{-0.13}$
164A17019X	26	39.52	24.79	33.30 $^{+0.15}_{-0.1}$
164A17029X	44	53.42	38.50	47.04 ± 0.13
164A17039X	62	69.70	54.96	63.50 ± 0.13



Directive 2002/95/EC RoHS compliant

(b) NOTES:

1. METALSHELLS: STEEL; min. 315µin TIN over 40-80µin Nickel
2. INSULATORS: PBT GF UL 94 V-0, BLACK
3. CONTACTS: COPPER ALLOY
PLATING: GOLD FLASH over NICKEL
SOLDER CUP ACCEPTS CABLE AWG 22
4. CONNECTOR IS PART MARKED: PART-NO. CONEC ABC

APPROVAL # FREIGABE # DEBLOCAGE # AUTORIZACION # APPROVAL	
CUSTOMER APPROVAL DATE:	
NAME:	TITLE:
COMPANY NAME:	
APPROVAL # FREIGABE # DEBLOCAGE # AUTORIZACION # APPROVAL	

THIS DRAWING MAY NOT BE COPIED OR REPRODUCED IN ANY WAY, AND MAY NOT BE PASSED ON TO A THIRD PARTY WITHOUT WRITTEN PERMISSION.
 OWNERSHIP AND COPYRIGHT OF CONEC GmbH
 DO NOT ALTER CAD DRAWING BY HAND

CONEC CORPORATION BRAMPTON, ONTARIO			tolerance	 dim. in mm	
2 x b	Ä 3104	04.09.08	2001	date	name
a	Origin		drawn	04.10.	Parei
rev.	description	date	appd.	04.10.	E. Mickenbecker
			norm		
			d-old		

scale:	2:1	
material:	SEE NOTES	
title:	D-SUB HD FEMALE 15-62pos. SOLDER CUP	
dwg no:	AutoCAD 2000	DIN-A
	16K1A322A	4
part no:	SEE TABLE	
		sh: 1/1