

CUSTOMER PRINT

PART NUMBER: 16982-XSG-5XX

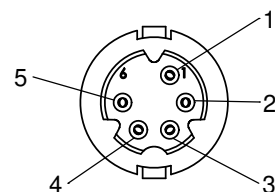
- NOTES:
- PARTS ARE TO BE BULK PACKED.
 - CONTACTS ARE ASSEMBLED INTO CONNECTOR.
 - PARENTHESIS () INDICATE REFERENCE DIMENSION.
 - BRACKETS [] INDICATE DIMENSIONS IN MILLIMETERS

ASS'Y P/N	CONTACT QTY.	KEY STYLE
16982-5SG-5XX	5	A-KEY
16982-6SG-5XX	6	B-KEY
16982-7SG-5XX	7	A-KEY

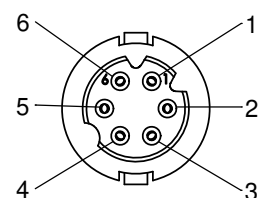
ASS'Y P/N	CABLE O.D.
16982-XSG-518	0.175-0.185
16982-XSG-521	0.205-0.215
16982-XSG-522	0.215-0.225

NUMBER OF CONTACTS

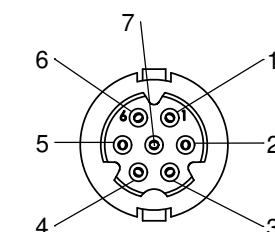
GROMMET SIZE



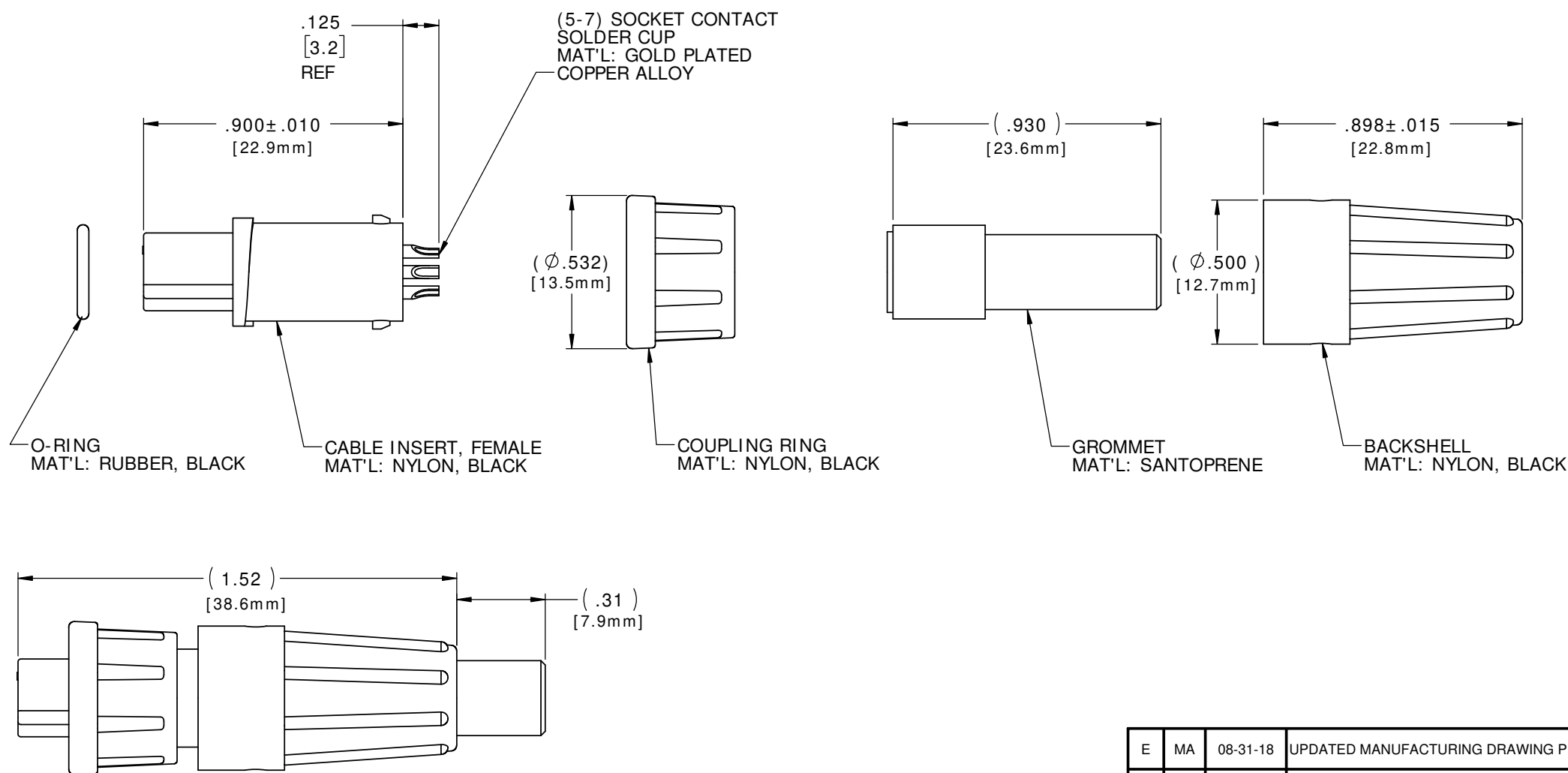
FACE VIEW
16982-5SG-5XX
5 POSITION
A-KEY



FACE VIEW
16982-6SG-5XX
6 POSITION
B-KEY



FACE VIEW
16982-7SG-5XX
7 POSITION
A-KEY



ASSEMBLED KIT VIEW
FOR CUSTOMER REFERENCE ONLY

CUSTOMER APPROVAL

THIS DOCUMENT CONTAINS CONFIDENTIAL INFORMATION PROPRIETARY TO CONXALL CORPORATION. ANY REPRODUCTION, DISCLOSURE, OR USE OF THIS DOCUMENT / INFORMATION IS EXPRESSLY PROHIBITED UNLESS AUTHORIZED IN WRITING BY CONXALL CORPORATION.

APPROVED BY: _____
DATE: _____

RoHS COMPLIANT

E	MA	08-31-18	UPDATED MANUFACTURING DRAWING PER ECR 9211-5
D	AN	01-10-14	CORRECTED BACKSHELL DIM. FROM 0.892 TO 0.898 PER ECR 8074
C	PD	11-04-12	REMOVED ASSEMBLIES 16982-XSG-3XX. DRAWING NAME WAS 16982-XSG-XXX PER ECR 8074, DOR 12-E149SL #45
B	AN	09-01-11	UPDATE MANUFACTURING DRAWING PER ECR 7959
A	PAK	02-11-10	DRAWING CREATED PER DOR 06-E168CS
REV.	INIT.	DATE	DESCRIPTION
ALL INFORMATION ILLUSTRATED IS THE PROPERTY OF CONXALL CORPORATION. UNAUTHORIZED DUPLICATION OR DISTRIBUTION OF THIS DOCUMENT IS PROHIBITED.		ORIG. DRAWN BY: PAK	DATE: 02-11-10
ALL UNITS ARE IN FEET, INCHES, FRACTION OF INCHES AND DECIMALS.		CHECKED BY:	
APPROVED BY:		 601 E. WILDWOOD VILLA PARK, IL 60181	
DATE:			
SCALE: NTS	SIZE: B	SHEET: 1 OF 1	TITLE: CABLE CONNECTOR KIT (5-7) SOCKET CONTACT, SOLDER CUP MICRO-CON-X, A-KEY & B-KEY STANDARD PRODUCT
FILE: 16982-XSG-5XX	DIRECTORY: SLW	PART NUMBER: 16982-XSG-5XX	REV: E