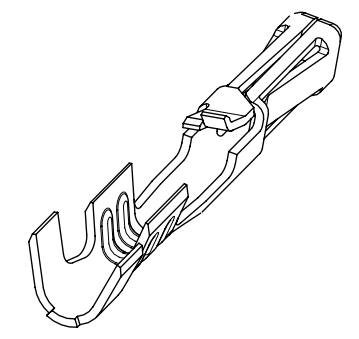


NOTES:

1. MATERIAL: PHOSPHOR BRONZE
2. PLATING:
 - 124 = SELECT BRIGHT TIN: 3.75 MICROMETERS MIN OVER NICKEL
 - 207 = SELECT HARD GOLD: 0.38 MICROMETERS MIN.
SELECT TIN: 2.0 MICROMETERS MIN BOTH OVER NICKEL
 - 206 = SELECT HARD GOLD: 0.75 MICROMETERS MIN.
SELECT TIN: 2.0 MICROMETERS MIN BOTH OVER NICKEL
 - P124 = PREPLATED OVERALL BRIGHT TIN: 3.75 MICROMETERS MIN OVER NICKEL
(MAY HAVE UNPLATED EDGES)
3. PRODUCT SPECIFICATION: TERMINALS CONFORM TO PS-70058 AND PS-70400 WHEN CRIMPED WITH MOLEX CRIMP TOOLS.
4. COSMETIC SPECIFICATION: PS-45499-002 CLASS B
5. TERMINAL FOR USE WITH HOUSING SERIES 70066 AND 70450
6. WIRE SPECIFICATION: TERMINALS STAMPED WITH THE LETTER:
 - A = ACCEPTS 24-30 AWG STRANDED WIRE WITH A 1.52 MAX INSULATION DIA
 - B = ACCEPTS 32-36 AWG STRANDED WIRE WITH A 0.64 MAX INSULATION DIA.
 - C = ACCEPTS 22-24 AWG STRANDED WIRE WITH A 1.63 MAX INSULATION DIA

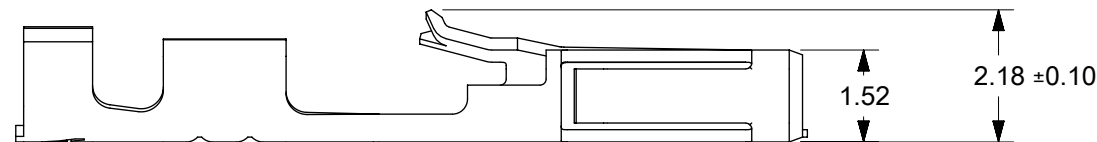
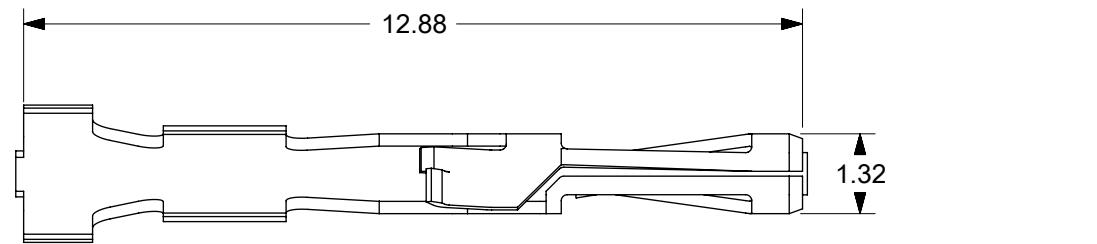
**TERMINALS ON THIS SHEET ARE FOR USE
WITH 24-30 AWG WIRE.
SEE SHEETS 2 FOR OTHER WIRE SIZES**



| MATERIAL NO: | PACKAGING | PLATING SEE NOTE 2 | WIRE SIZE | MAX INSULATION DIA |
|--------------|-----------|-----------------------|--------------|-----------------------|
| 70058-1069 | REEL | 124 SELECT TIN | 24-30 AWG | 1.52 DIA MAX |
| 70058-1096 | LOOSE | | | |
| 70058-0082 | REEL | 207 0.38 GOLD | | |
| 70058-0097 | LOOSE | | | |
| 70058-0083 | REEL | 206 0.75 GOLD | | |

| | | | | | | | | | |
|---|---------------------|---|---------------|--------------|--|----------------|----------|----------|------------------------|
| THIS DRAWING CONTAINS INFORMATION THAT IS PROPRIETARY TO MOLEX ELECTRONIC TECHNOLOGIES, LLC AND SHOULD NOT BE USED WITHOUT WRITTEN PERMISSION | | | | | | | | | |
| DIMENSION UNITS mm | SCALE 8:1 | CURRENT REV DESC: REMOVED OBSOLETE PART NUMBER AS PER PCN#511695. | | | molex | | | | |
| GENERAL TOLERANCES (UNLESS SPECIFIED) | | EC NO: 730178 | | | | | | | |
| ANGULAR TOL | ± ° | DRWN: SANTHN 2022/12/02 | | | SL CRIMP TERMINAL (24-30 AWG WIRE) | | | | |
| 4 PLACES | ± | CHKD: GGA 2023/01/04 | | | | | | | |
| 3 PLACES | ± | APPR: GGA 2023/01/04 | | | PRODUCT CUSTOMER DRAWING | | | | |
| 2 PLACES | ± 0.15 | INITIAL REVISION: | | | | | | | |
| 1 PLACE | ± 0.25 | DRWN: KSAMIEC 2017/05/03 | | | DOCUMENT NUMBER 700580000-SD | | | | |
| 0 PLACES | ± 0.0 | APPR: FSMITH 2017/06/16 | | | | | | | |
| DRAFT WHERE APPLICABLE MUST REMAIN WITHIN DIMENSIONS | | THIRD ANGLE PROJECTION | DRAWING | SERIES | MATERIAL NUMBER | CUSTOMER | DOC TYPE | DOC PART | REVISION |
| | | | B-SIZE | 70058 | SEE TABLE | GENERAL MARKET | PSD | 000 | B3 |
| | | | | | | | | | SHEET NUMBER 1 OF 3 |

| | | | | |
|-----------------|----|--------------|------------|----------|
| DOCUMENT STATUS | P1 | RELEASE DATE | 2023/01/04 | 04:25:01 |
|-----------------|----|--------------|------------|----------|



TERMINALS STAMPED WITH THE LETTER "C"
ACCEPT 22-24 AWG WIRE WITH A 1.63 MAX INSULATION DIA



NOTES:

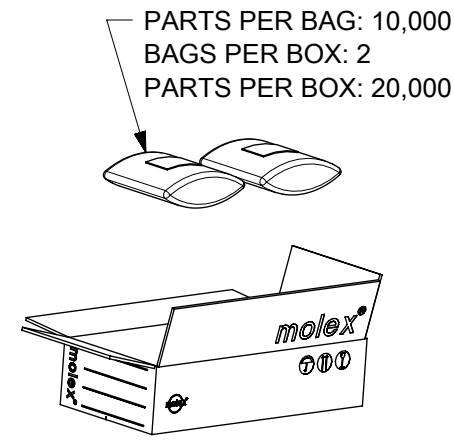
- MATERIAL: PHOSPHOR BRONZE
- PLATING:
 - 124 = SELECT BRIGHT TIN: 3.75 MICROMETERS MIN OVER NICKEL
 - 207 = SELECT HARD GOLD: 0.38 MICROMETERS MIN.
SELECT TIN: 2.0 MICROMETERS MIN BOTH OVER NICKEL
 - 206 = SELECT HARD GOLD: 0.75 MICROMETERS MIN.
SELECT TIN: 2.0 MICROMETERS MIN BOTH OVER NICKEL
 - P124 = PREPLATED OVERALL BRIGHT TIN: 3.75 MICROMETERS MIN OVER NICKEL
(MAY HAVE UNPLATED EDGES)
- PRODUCT SPECIFICATION: TERMINALS CONFORM TO PS-70058 AND PS-70400 WHEN CRIMPED WITH MOLEX CRIMP TOOLS.
- COSMETIC SPECIFICATION: PS-45499-002 CLASS B
- TERMINAL FOR USE WITH HOUSING SERIES 70066 AND 70450
- WIRE SPECIFICATION: TERMINALS STAMPED WITH THE LETTER:
 - A = ACCEPTS 24-30 AWG STRANDED WIRE WITH A 1.52 MAX INSULATION DIA
 - B = ACCEPTS 32-36 AWG STRANDED WIRE WITH A 0.64 MAX INSULATION DIA.
 - C = ACCEPTS 22-24 AWG STRANDED WIRE WITH A 1.63 MAX INSULATION DIA

TERMINALS ON THIS SHEET ARE FOR USE
WITH 22-24 AWG WIRE.
SEE SHEETS 1 FOR OTHER WIRE SIZES

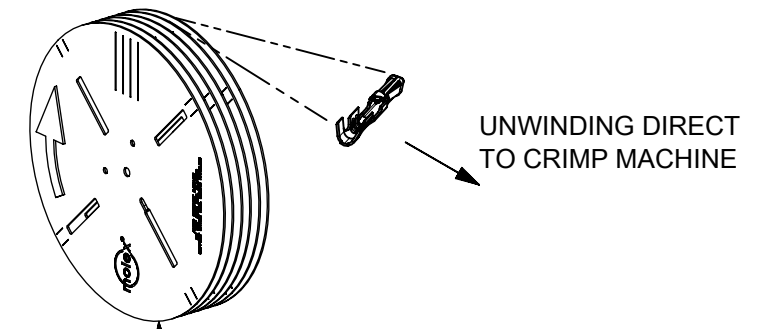
| MATERIAL NO: | PACKAGING | PLATING SEE NOTE 2 | WIRE SIZE | MAX INSULATION DIA |
|--------------|-----------|-----------------------|--------------|-----------------------|
| 70058-1086 | REEL | 124 SELECT TIN | 22-24 AWG | 1.63 DIA MAX |
| 70058-0086 | REEL | P124 OVERALL TIN | | |
| 70058-0087 | REEL | 207 0.38 GOLD | | |
| 70058-0103 | LOOSE | 206 0.75 GOLD | | |
| 70058-0088 | REEL | 206 0.75 GOLD | | |

| | | | | | | | | | |
|---|---------------------|---|--------------------------|------------------------|--|----------------------------|-----------------|-----------------|-----------------------|
| THIS DRAWING CONTAINS INFORMATION THAT IS PROPRIETARY TO MOLEX ELECTRONIC TECHNOLOGIES, LLC AND SHOULD NOT BE USED WITHOUT WRITTEN PERMISSION | | | | | | | | | |
| DIMENSION UNITS mm | SCALE 8:1 | CURRENT REV DESC: REMOVED OBSOLETE PART NUMBER AS PER PCN#511695. | | | | | | | |
| GENERAL TOLERANCES (UNLESS SPECIFIED) | | EC NO: 730178 | | | | | | | |
| ANGULAR TOL | ± ° | DRWN: SANTHN 2022/12/02 | | | SL CRIMP TERMINAL (22-24 AWG WIRE) | | | | |
| 4 PLACES | ± | CHKD: GGA 2023/01/04 | | | | | | | |
| 3 PLACES | ± | APPR: GGA 2023/01/04 | | | PRODUCT CUSTOMER DRAWING | | | | |
| 2 PLACES | ± 0.15 | INITIAL REVISION: | | | | | | | |
| 1 PLACE | ± 0.25 | DRWN: KSAMIEC 2017/05/03 | | | DOCUMENT NUMBER 700580000-SD | | | | |
| 0 PLACES | ± 0.0 | APPR: FSMITH 2017/06/16 | | | | | | | |
| DRAFT WHERE APPLICABLE MUST REMAIN WITHIN DIMENSIONS | | THIRD ANGLE PROJECTION | DRAWING B-SIZE | SERIES 70058 | MATERIAL NUMBER SEE TABLE | CUSTOMER GENERAL MARKET | DOC TYPE PSD | DOC PART 000 | REVISION B3 |
| DOCUMENT STATUS P1 | | RELEASE DATE 2023/01/04 | 04:25:01 | | SHEET NUMBER 2 OF 3 | | | | |

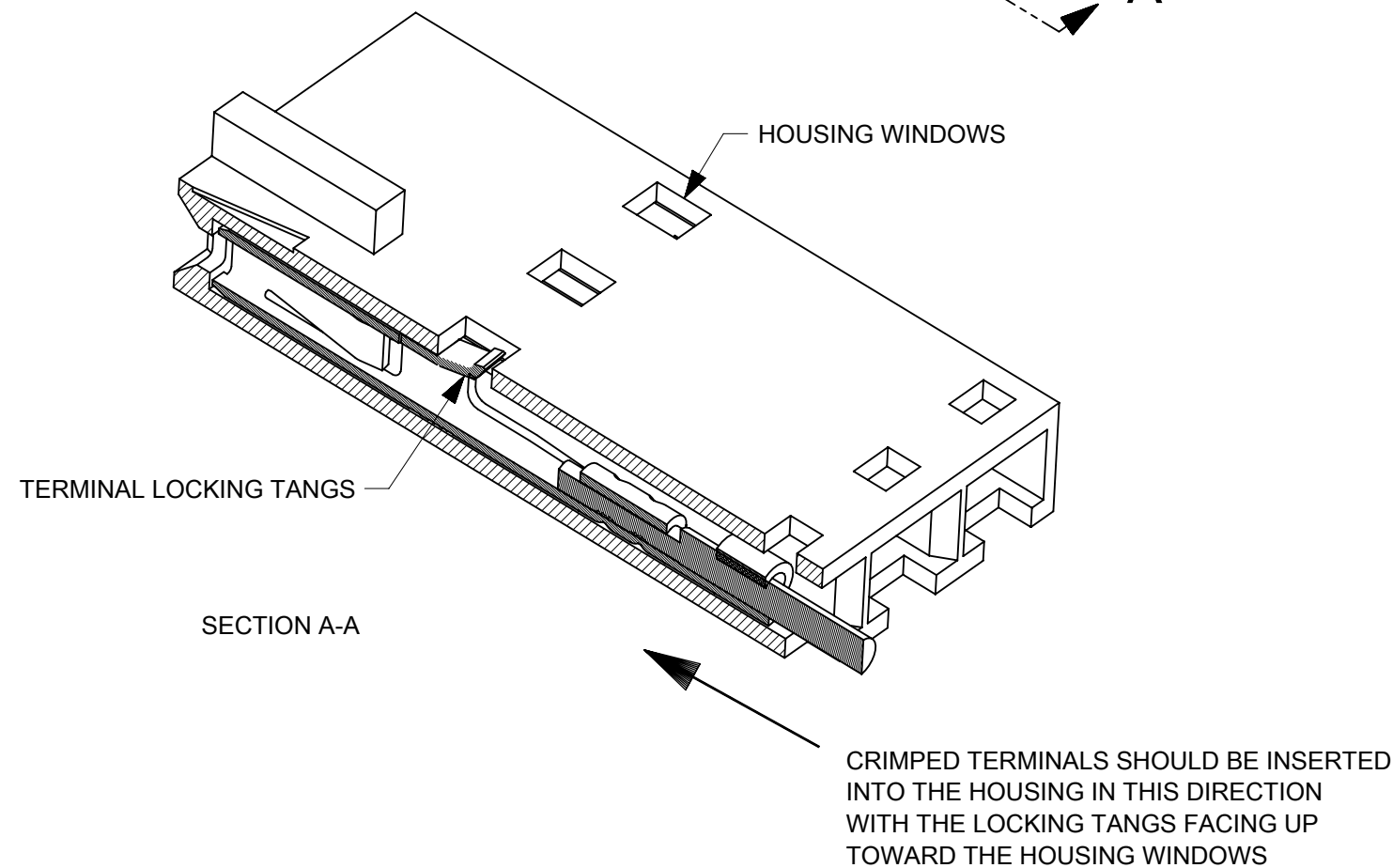
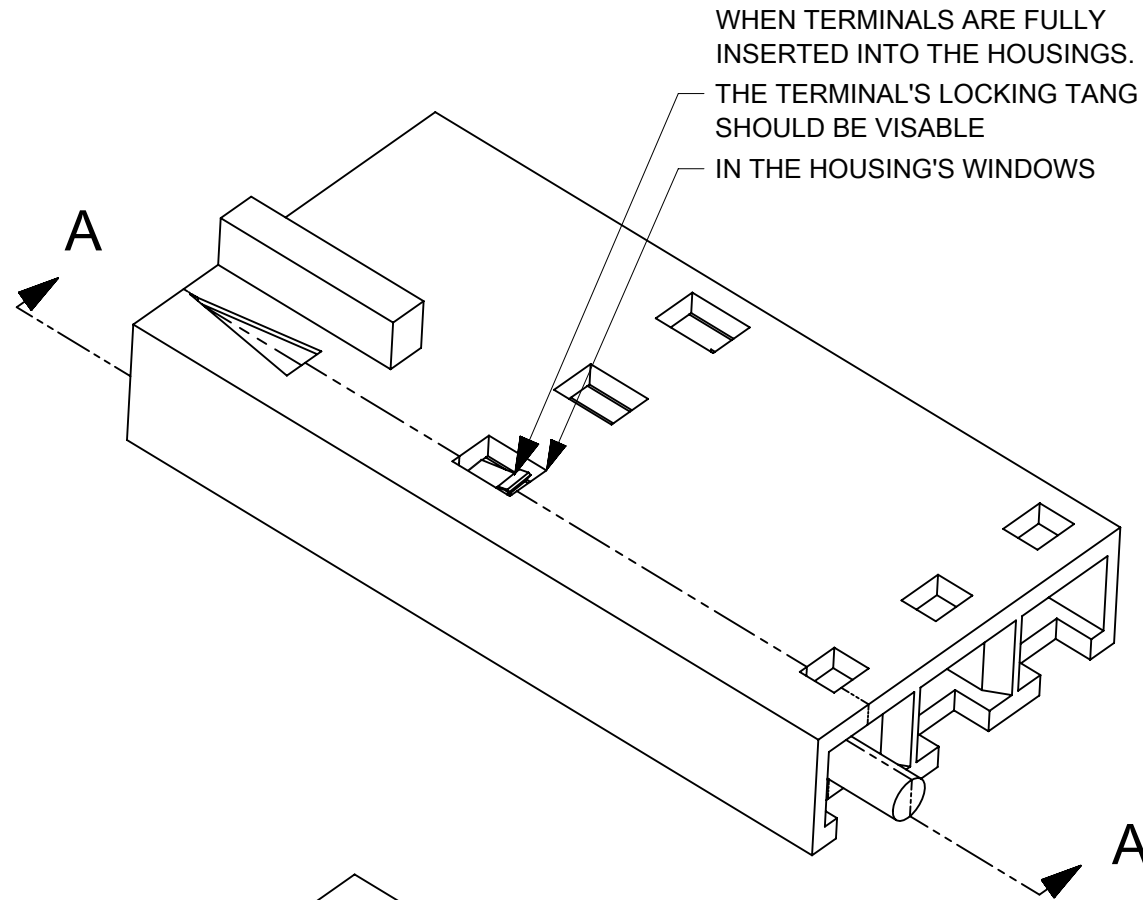
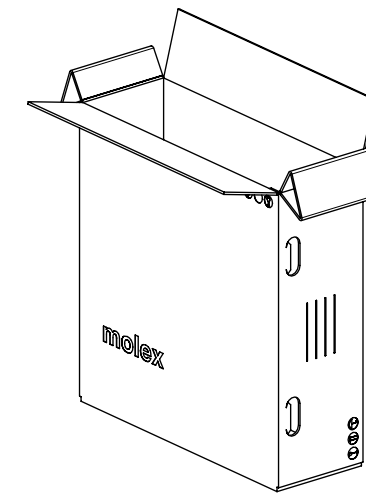
LOOSE PACKED



REEL PACKED



PARTS PER REEL: 20,000
REELS PER BOX: 3
PARTS PER BOX: 60,000



| | | | | | | | | | | |
|---|--------|---|---------|--------|--------------------------|----------------|--|--------------|-----|----|
| THIS DRAWING CONTAINS INFORMATION THAT IS PROPRIETARY TO MOLEX ELECTRONIC TECHNOLOGIES, LLC AND SHOULD NOT BE USED WITHOUT WRITTEN PERMISSION | | | | | | | | | | |
| DIMENSION UNITS | SCALE | CURRENT REV DESC: REMOVED OBSOLETE PART NUMBER AS PER PCN#511695. | | | | | | | | |
| mm | 1:15 | | | | | | | | | |
| GENERAL TOLERANCES (UNLESS SPECIFIED) | | EC NO: 730178 | | | SL CRIMP TERMINAL | | | | | |
| ANGULAR TOL | ± ° | DRWN: SANTHN 2022/12/02 | | | | | | | | |
| 4 PLACES | ± | CHKD: GGA 2023/01/04 | | | PRODUCT CUSTOMER DRAWING | | | | | |
| 3 PLACES | ± | APPR: GGA 2023/01/04 | | | | | | | | |
| 2 PLACES | ± 0.15 | INITIAL REVISION: | | | DOCUMENT NUMBER | | | | | |
| 1 PLACE | ± 0.25 | DRWN: KSAMIEC 2017/05/03 | | | | | | | | |
| 0 PLACES | ± 0.0 | APPR: FSMITH 2017/06/16 | | | 700580000-SD | | | PSD | 000 | B3 |
| DRAFT WHERE APPLICABLE MUST REMAIN WITHIN DIMENSIONS | | THIRD ANGLE PROJECTION | DRAWING | SERIES | MATERIAL NUMBER | CUSTOMER | | SHEET NUMBER | | |
| | | | B-SIZE | 70058 | SEE TABLE | GENERAL MARKET | | 3 OF 3 | | |