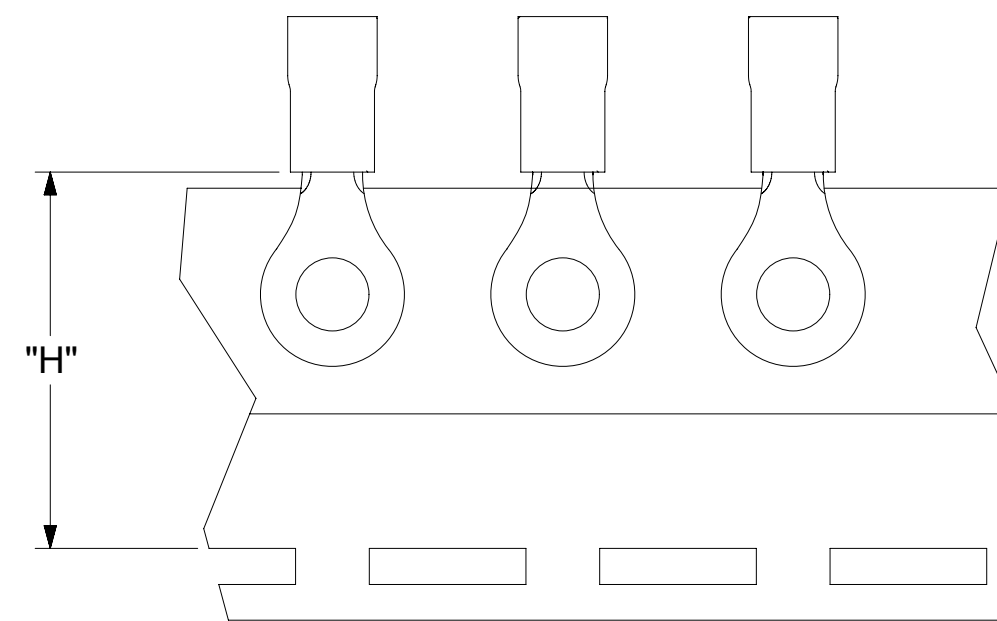
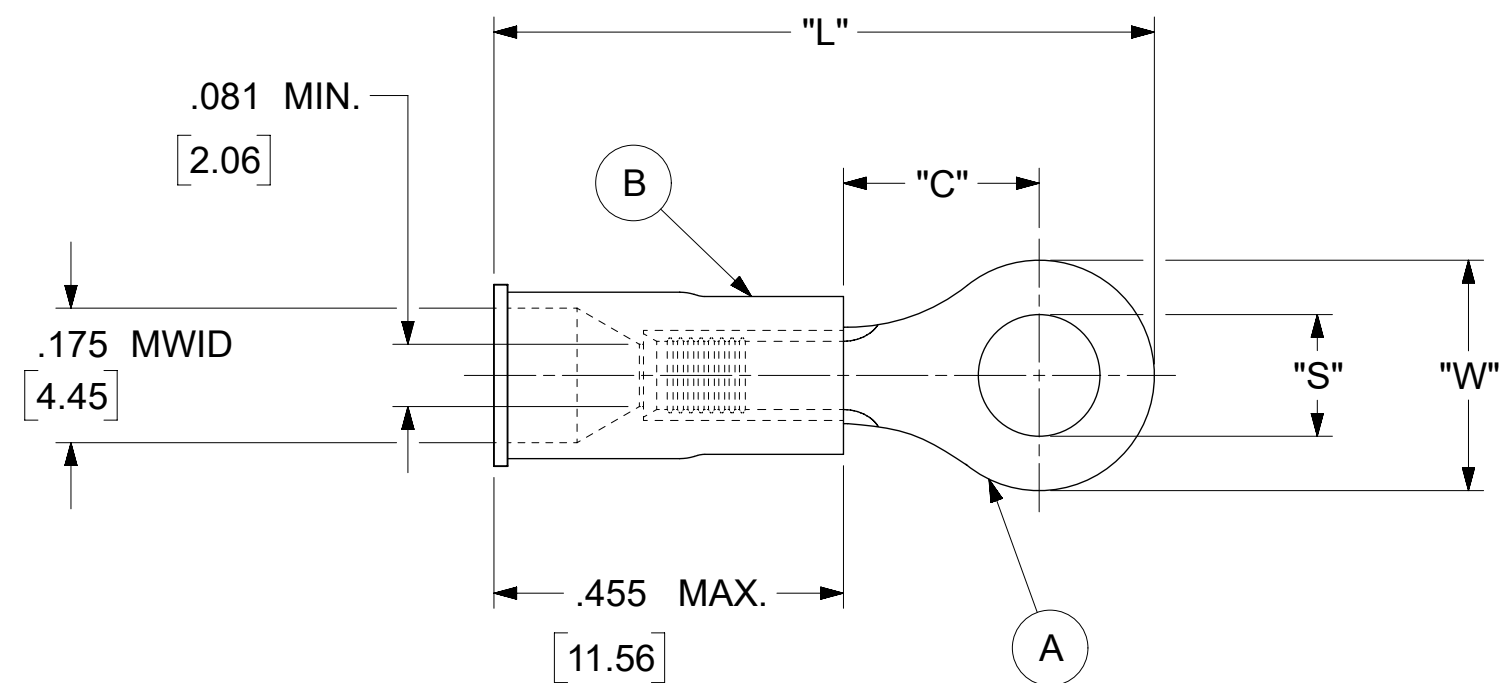


LOOSE PIECE		TAPE MOUNTED		SPECIFICATIONS						
MATERIAL NUMBER	ENGINEERING NUMBER	MATERIAL NUMBER	ENGINEERING NUMBER	STUD SIZE	"S" ±.005 [0.13]	"W" ±.010 [0.25]	"C" MIN.	"L" MAX.	"H"	STOCK ±.001 [0.025] THICKNESS
190540073	B-218-14X	---	---	14	.265 [6.73]	.534 [13.56]	.554 [14.07]	1.311 [33.30]	.980 [24.89]	.031 [.79]
190540075	B-218-38X	---	---	38	.390 [9.91]					
190540077	B-218-56X	---	---	56	.328 [8.33]					
190540080	B-223-04X	---	---	4	.119 [3.02]	.250 [6.35]	.209 [5.31]	.835 [21.21]	.980 [24.89]	.031 [.79]
190540081	B-223-06X	190540082	B-223-06XT	6	.146 [3.71]					
190540083	B-223-08X	---	---	8	.173 [4.39]					
190540086	B-225-14X	190540087	B-225-14XT	14	.265 [6.73]	.467 [11.86]	.388 [9.86]	1.112 [28.24]	.980 [24.89]	.031 [.79]
190540088	B-225-56X	---	---	56	.328 [8.33]					
190540107	B-237-04X	---	---	4	.119 [3.02]	.312 [7.92]	.285 [7.24]	.926 [23.52]	.980 [24.89]	.031 [.79]
190540108	B-237-06X	190540109	B-237-06XT	6	.146 [3.71]					
190540110	B-237-08X	190540112	B-237-08XT	8	.173 [4.39]					
190540113	B-237-10X	190540115	B-237-10XT	10	.198 [5.03]					
190540117	B-239-06X	---	---	6	.146 [3.71]	.342 [8.69]	.310 [7.87]	.971 [24.66]	---	.031 [.79]
190540118	B-239-08X	---	---	8	.173 [4.39]					
190540119	B-239-10X	---	---	10	.198 [5.03]					



NOTES:

- MATERIAL:
 - (A). RING TONGUE TERMINAL: COPPER
 - PLATING: ELECTRO-TIN (.0003 MIN.)
 - (B). INSULATION: MOLDED PVC (BLUE)
- MWID: MAXIMUM WIRE INSULATION DIAMETER
- WIRE SIZE: 16 -14 AWG
1.0 -2.5 MM²
- ALL DIMENSIONS IN INCHES/[MM].
- PARTS ARE ROHS COMPLIANT.
- DIMS. SHOWN ARE FOR REFERENCE ONLY.

THIS DRAWING CONTAINS INFORMATION THAT IS PROPRIETARY TO MOLEX ELECTRONIC TECHNOLOGIES, LLC AND SHOULD NOT BE USED WITHOUT WRITTEN PERMISSION									
DIMENSION UNITS INCH/MM		SCALE NTS		CURRENT REV DESC: OBSOLETE PART NUMBERS AS PER PCN#512131				molex	
GENERAL TOLERANCES (UNLESS SPECIFIED)				EC NO: 727779		2022/09/30			
4 PLACES ±		±		DRWN: ANIKES1		2022/11/29		RING TONGUE TERMINAL INSULKRIMP 200-SERIES	
3 PLACES ±		± 0.005		CHK'D: GGA		2022/11/29			
2 PLACES ±		0.13 ± 0.01		APPR: GGA		2022/11/29		PRODUCT CUSTOMER DRAWING	
1 PLACE ±		0.25 ±		INITIAL REVISION:					
0 PLACES ±		±		DRWN: KO		1984/10/25		DOCUMENT NUMBER	
ANGULAR TOL ± 0.5 °		THIRD ANGLE PROJECTION		APPR: JMACNEIL		2019/07/01		190540072	
DRAFT WHERE APPLICABLE MUST REMAIN WITHIN DIMENSIONS		DRAWING		SERIES		MATERIAL NUMBER		CUSTOMER	
		C-SIZE		19054		SEE TABLE		GENERAL MARKET	
								DOC TYPE DOC PART REVISION	
								PSD 000 A2	
								SHEET NUMBER	
								1 OF 1	