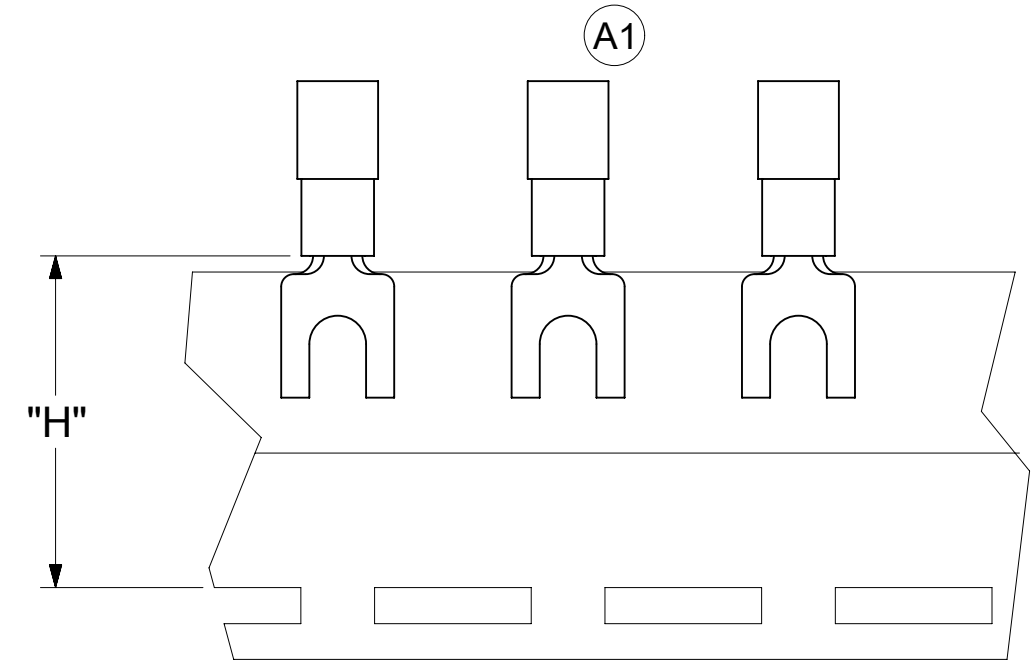
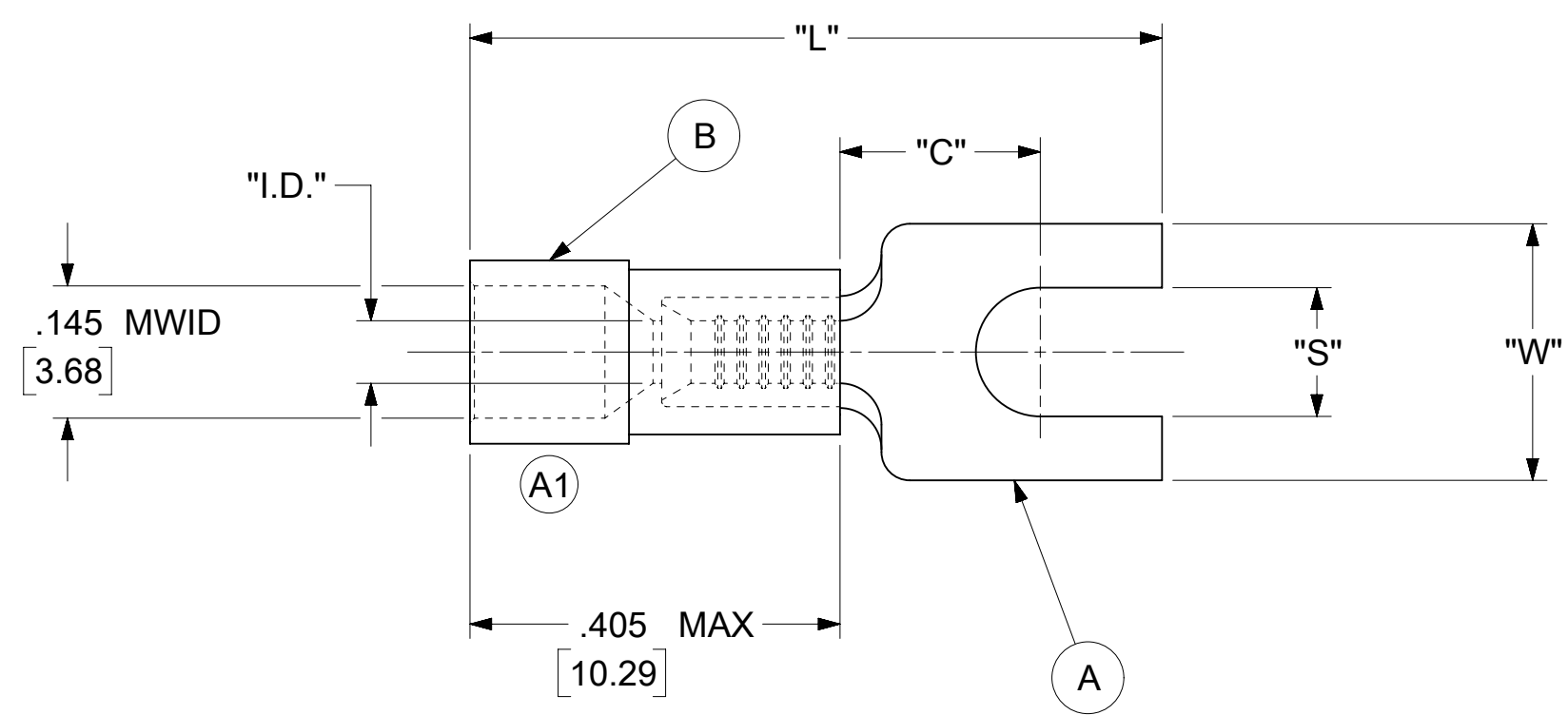


LOOSE PIECE		TAPE MOUNTED		SPECIFICATIONS							
MATERIAL NUMBER	ENGINEERING NUMBER	MATERIAL NUMBER	ENGINEERING NUMBER	STUD SIZE	"S" ±.005 [0.13]	"W" ±.010 [0.25]	"C" MIN.	"L" MAX.	"I.D." MIN.	"H"	STOCK THICKNESS
191310038	AA-234-06X	191310037	AA-234-06XT	6	.146 [3.71]	.291 [7.39]	.207 [5.26]	.785 [19.94]	.062 [1.57]	.980 [24.89]	.028 $\frac{+.001}{-.000}$ [0.71]
191310036	AA-234-08X	191310035	AA-234-08XT	8	.173 [4.39]						
191310034	AA-234-10X	---	---	10	.198 [5.03]						
191310031	AA-238-06X	191310030	AA-238-06XT	6	.146 [3.71]	.245 [6.22]	.207 [5.26]	.785 [19.94]	.062 [1.57]	.980 [24.89]	.028 $\frac{+.001}{-.000}$ [0.71]



PARTS ON TAPE

NOTES:

- MATERIAL:
  - (A). SPADE TONGUE TERMINAL: COPPER  
PLATING: ELECTRO-TIN (.0003 MIN.)
  - (B). INSULATION: MOLDED PVC (RED)
- MWID: MAXIMUM WIRE INSULATION DIAMETER
- WIRE SIZE: 22 -18 AWG  
0.25 -1.5 MM<sup>2</sup>
- "UL" LISTING #E32244  
"CSA" LISTING #18689
- ALL DIMENSIONS IN INCHES/[MM].
- PARTS ARE RoHS COMPLIANT.
- DIMS. SHOWN ARE FOR REFERENCE ONLY.

SYMBOLS	THIS DRAWING CONTAINS INFORMATION THAT IS PROPRIETARY TO MOLEX ELECTRONIC TECHNOLOGIES, LLC AND SHOULD NOT BE USED WITHOUT WRITTEN PERMISSION									
	DIMENSION UNITS		SCALE		CURRENT REV DESC: DWG ERROR. FIXED					
	INCH/MM		NTS		INSUL PROFILE					
	GENERAL TOLERANCES (UNLESS SPECIFIED)									
▽ = 0	4 PLACES	±	---	±	---	EC NO: 647871				
▽ = 0	3 PLACES	±	---	±	.005	DRWN: DMYRICK 2020/10/26				
▽ = 0	2 PLACES	±	0.13	±	.01	CHK'D: KBURROUGHS 2020/10/27				
▽ = 0	1 PLACE	±	0.25	±	---	APPR: KBURROUGHS 2020/10/27				
☒ = 0	0 PLACES	±	---	±	---	INITIAL REVISION:				
■ = 0	ANGULAR TOL		± 0.5°		DRWN: JJ 1984/11/02					
▽ = 0	DRAFT WHERE APPLICABLE MUST REMAIN WITHIN DIMENSIONS		THIRD ANGLE PROJECTION		DRAWING		SERIES			
				C-SIZE		19131				
DOCUMENT STATUS		P1		RELEASE DATE		2020/10/27 18:30:13		MATERIAL NUMBER		
								CUSTOMER		SHEET NUMBER
								GENERAL MARKET		1 OF 1



SPADE TONGUE TERMINAL  
INSULKRIMP 200-SERIES

PRODUCT CUSTOMER DRAWING

DOCUMENT NUMBER	DOC TYPE	DOC PART	REVISION
191310039	PSD	000	A1