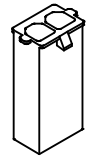
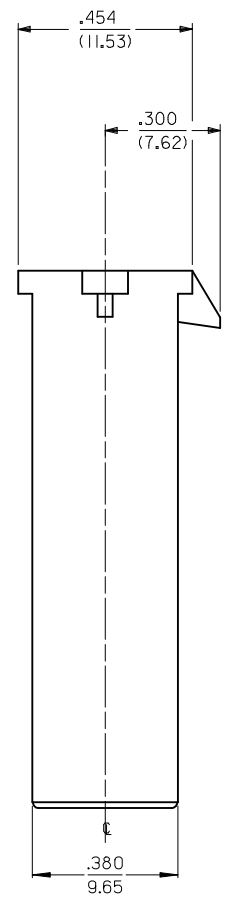
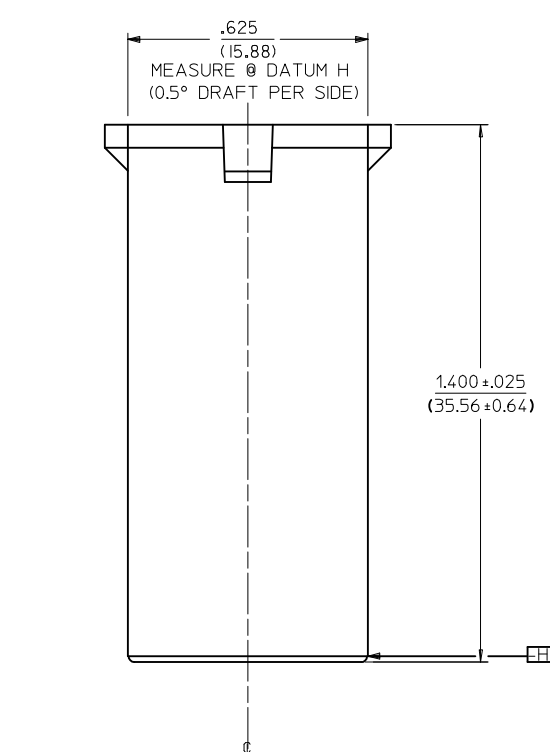


X = NOT RELEASED FOR PRODUCTION

	ITEM NUMBER	MATERIAL (SEE NOTE 1)	COLOR
	43180-1002	A	NATURAL
X	43180-2002	B	BLACK
	OBSOLETE 43180-3002	A	RED
	43180-4002	A	BLUE
	43180-5002	C	BLACK
	43180-6002	D	NATURAL
	43180-7002	E	BLACK

NOTES:

- MATERIAL: A: NYLON PA66, 94V-2, COLOR: SEE CHART.  
B: NYLON, PA 66/6, 94V-0, COLOR: BLACK  
C: UL94V-0, PA66 NYLON  
D: NYLON 66, UL94V-0, COLOR: NATURAL.  
E: NYLON, UL94V-2, COLOR: BLACK, IEC 60335-1, GLOW WIRE CAPABLE.
- FINISH: NONE
- PRODUCT SPECIFICATION: PSX-43335-9999.
- PACKAGING SPECIFICATION: PK-43180-001.
- THIS CONNECTOR HOUSING FOR USE WITH 43178-\*\*\*\* TERMINALS.
- THIS CONNECTOR HOUSING WILL MATE TO 43335-\*\*\*\*2, 43179-\*\*\*\*2, AND 44441-\*\*\*\*2 HOUSINGS.
- PARTS CONFORM TO CLASS B REQUIREMENTS OF COSMETIC SPECIFICATION PS-45499-002 EXCEPT MATERIAL OPTION 'C' MEETS CLASS 'C' REQUIREMENTS FOR SINK AND DISCOLORATION.



ADD-7002 PN IEC NO: UCP2014-2000 DRAWINGS 2013/11/06 CHKD: BANDERSON 2013/11/11 APPR: FSMITH 2014/03/31	QUALITY SYMBOLS ∇=0 ∇=0 ∇=0	GENERAL TOLERANCES (UNLESS SPECIFIED)		DIMENSION STYLE IN/MM		SCALE 4:1	DESIGN UNITS INCH	THIRD ANGLE PROJECTION		
		4 PLACES ± --- ± ---	mm INCH	DRAWN BY	DATE	TITLE 2-CIR PLUG HOUSING .125/(3.18)X .020/(0.51) FLAT BLADE SYS. - T.P.A. <b>molex</b> DOCUMENT NO. SD-43180-*002 SHEET NO. 1 OF 1				
		3 PLACES ± --- ± .010		CHECKED BY	DATE					
		2 PLACES ± 0.25 ± .015		KBP	1995/08/09					
1 PLACE ± 0.38 ± ---		APPROVED BY	DATE							
0 PLACE ± ±		RAS	1995/08/09	MATERIAL NO. SEE CHART						
DRAFT WHERE APPLICABLE MUST REMAIN WITHIN DIMENSIONS		ANGULAR ±1/2°		SIZE C		THIS DRAWING CONTAINS INFORMATION THAT IS PROPRIETARY TO MOLEX INCORPORATED AND SHOULD NOT BE USED WITHOUT WRITTEN PERMISSION				