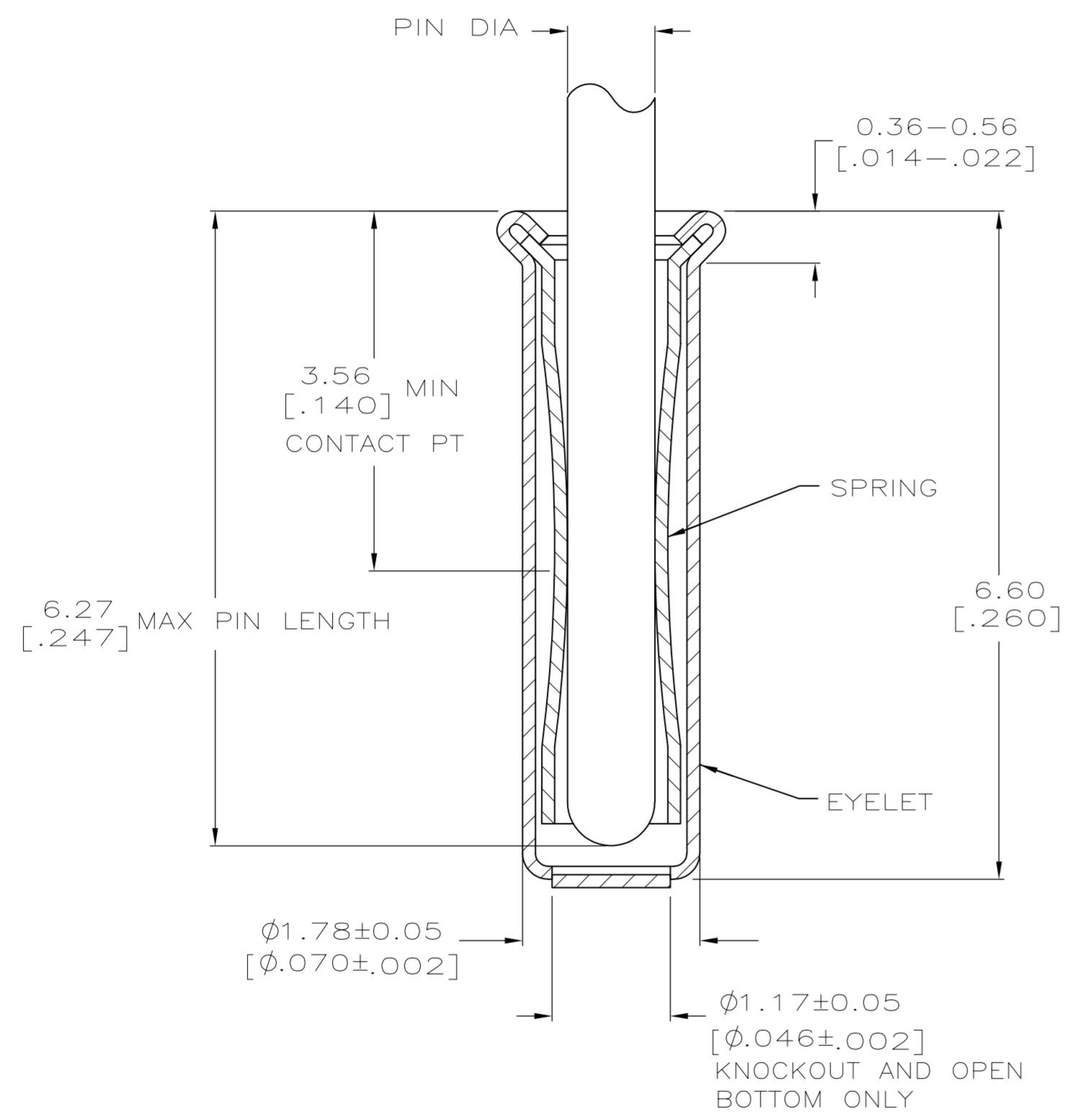
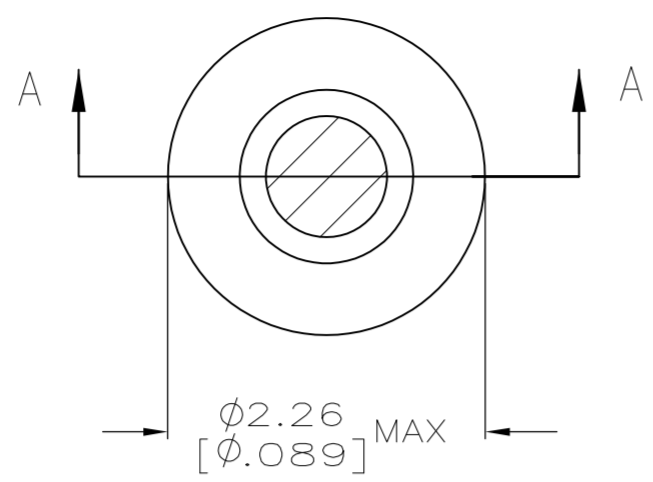


LOC	DIST	REVISIONS			
P	LTR	DESCRIPTION	DATE	DWN	APVD
GP	00	A1	REVISED PER ECO-11-004835	11MAR11	RK HMR



SECTION A-A

- 1. TIN PLATE PER ASTM-B-545 .000254 [.000100] MINIMUM THICK.
- 2. NICKEL UNDERPLATE ALL OVER, MATING SURFACE PLATED TO MEET PERFORMANCE REQUIREMENTS OF TE CONNECTIVITY PRODUCT SPECIFICATION 108-14008.
- 3. RECOMMENDED HOLE SIZE, PLATED OR UNPLATED:
 MACHINE INSERTION: 1.83 ^{+0.10}/_{-0.08} [.072 ^{+0.004}/_{-.003}]
 HAND INSERTION: 1.83 ^{+0.10}/_{-0.00} [.072 ^{+0.004}/_{-.000}]
- 4. APPLICATION TOOL PART NUMBER:
 MACHINE NO. 682127-5
 INSERTION HEAD NO. 682039-4
- 5. TO INSURE PROPER SPRING TENSION DO NOT EXCEED A 0.05 [.002] DIFFERENCE IN PIN DIA WHEN CHANGING TO A SMALLER PIN.
- 6. BOTTOM PLUG KNOCKOUT TOOL PART NUMBER 69729 WITH TIP PART NUMBER 69728-2.
- 7. MATERIAL: SPRING: BERYLLIUM COPPER QQ-C-533
 EYELET: COPPER, QQ-C-576

CLOSED KNOCKOUT	OPEN	0.86-1.04 [.034-.041]	TIN	TIN	5050865-8
CLOSED	OPEN				5050865-7
CLOSED KNOCKOUT	OPEN				5050865-6
					5050865-5
					5050865-3
					5050865-1
BOTTOM TYPE	RECOMMENDED PIN DIA	EYELET	SPRING	FINISH	PART NO

THIS DRAWING IS A CONTROLLED DOCUMENT.		DWN J. ALCORTA - DOCK5 20APR2005		
DIMENSIONS: mm [INCHES]		CHK J. HAVENER 25JUL2005		
TOLERANCES UNLESS OTHERWISE SPECIFIED:		APVD J. HAVENER 25JUL2005	NAME MINIATURE SPRING SOCKET ASSEMBLY SERIES 4	
0 PLC ± - 1 PLC ± - 2 PLC ± - 3 PLC ± 0.20 [.008] 4 PLC ± - ± - ANGLES ± -		PRODUCT SPEC 108-14008	RESTRICTED TO	
MATERIAL		APPLICATION SPEC 114-13152	SIZE A2	CAGE CODE 00779
FINISH SEE TABLE		WEIGHT -	DRAWING NO C=5050865	
		CUSTOMER DRAWING		SCALE 20:1
		SHEET 1 of 1		REV A1