

D-Sub Full Metal, Black, Top cable entry

TECHNICAL SPECIFICATIONS

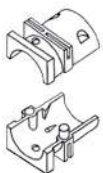
Material: Zinc, Black Plated
 Operating Temperature: -40°C to +120°C
 Cable Entry: Top Entry
 Thumbscrews: UNC 4-40 (Standard)
 M2,5 or M3 on request
 Cable O.D: Up to 11,5mm



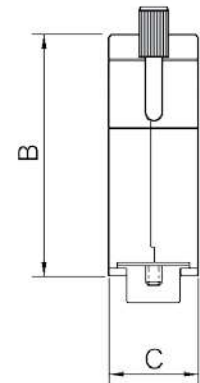
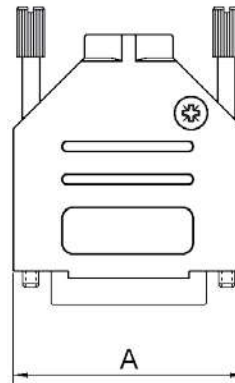
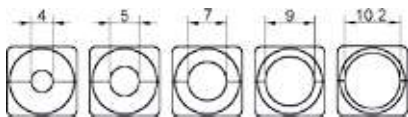
Features:

- Available in sizes 9-15-25-37
- Size 50 on request
- Excellent EMI Shielding
- Re-openable
- Strain relief inserts ensure a secure termination
- Black Full Metal Jackscrew as standard

Grommet Sizes:



Size 9-15-25-37



| Size DTZK | Dim A | Dim B | Dim C |
|-----------|-------|-------|-------|
| 9-way | 31,0 | 39,5 | 15,0 |
| 15-way | 39,5 | 41,5 | 15,0 |
| 25-way | 53,5 | 48,5 | 15,0 |
| 37-way | 71,0 | 53,0 | 15,0 |

Ordering information:

| Size: | P/N - Kitted: | Product Code: |
|--------|---------------|---------------|
| 9-way | 6560-0115-01 | DTZK09-BK-K |
| 15-way | 6560-0115-02 | DTZK15-BK-K |
| 25-way | 6560-0115-03 | DTZK25-BK-K |
| 37-way | 6560-0115-04 | DTZK37-BK-K |



Encitech Connectors AB
 Rörkullsvägen 4
 SE-302 41 HALMSTAD, Sweden

Tel: +46-(0)35-15 13 90
 e-mail: connectors@encitech.com

www.encitech.com