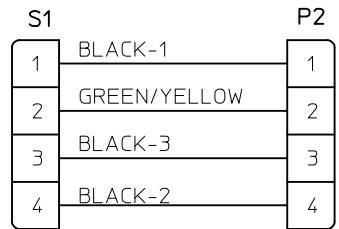
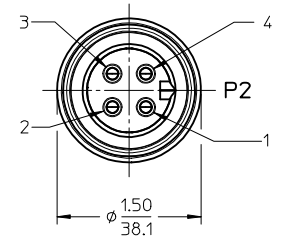


NOTES:

- 1) MATERIAL: SEE TABLE
- 2) FINISHES: SEE TABLE
- 3) WRAP LABEL IS MARKED WITH P/N, DATE CODE VOLTAGE & AMPERAGE
- 4) MATES WITH: QUICK CHANGE 4 POLE RECEPTACLE
- 5) ELECTRICAL DATA:  
 10AWG UL TYPE: TC-ER STRANDED CABLE  
 MAX VOLTAGE: 600V  
 MAX CURRENT: 32A  
 PROTECTION IP67 (WHEN MATED)  
 TEMPERATURE RANGE: -20°C TO 90°C
- 6) PACKAGING:  
 CABLE ASSEMBLIES ARE BAGGED SEPERATLY IN POLY BAGS WITH BAR CODE LABEL ATTACHED TO OUTSIDE OF BAG.
- 7) ASSEMBLY IS RoHS COMPLIANT



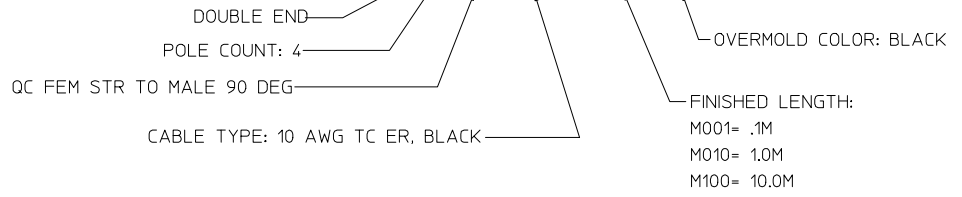
WIRING DIAGRAM



MALE FACE VIEW

PART NUMBER LEGEND

CC4032K17MXXXG



ITEM	QTY.	DESCRIPTION	MATERIAL	FINISH
11	2	WARNING LABEL	VINYL	ORANGE/BLACK
10	1	WRAP LABEL	VINYL	BLACK/YELLOW
9	1	OVERMOLD, 90 DEG.	PVC	BLACK
8	1	COUPLING, MALE	ALUMINUM	CLEAR ANODIZE
7	4	CONTACT PIN	Cu ALLOY	GOLD PLATED
6	1	INSERT, MALE	PVC	BLACK
5	1	OVERMOLD, STRAIGHT	PVC	BLACK
4	1	COUPLING, FEMALE	ALUMINUM	CLEAR ANODIZE
3	4	CONTACT SOCKET	Cu ALLOY	GOLD PLATED
2	1	INSERT, FEMALE	PVC	BLACK
1	1	CABLE, 10/4 TC-ER (SEE NOTE 5)	TPE JACKET	BLACK

RELEASED	EC NO: IPG2016-0989	2016/02/02
DRWNR:RSTONE	CHKD: BWOODMAN	2016/03/25
APPR: BWOODMAN	DESCRIPTION	

QUALITY SYMBOLS	GENERAL TOLERANCES (UNLESS SPECIFIED)
▽=0	mm INCH
▽=0	4 PLACES ± --- ± ---
	3 PLACES ± --- ± ---
	2 PLACES ± --- ± .01
	1 PLACE ± 0.3 ± ---
	0 PLACE ± --- ± ---
	ANGULAR ± 1 °
	DRAFT WHERE APPLICABLE MUST REMAIN WITHIN DIMENSIONS

DIMENSION STYLE	SCALE	DESIGN UNITS	THIRD ANGLE PROJECTION
IN/MM	1:1	INCH	
DRAWN BY	DATE	TITLE	
RSTONE	2016/02/02	QUICK CHANGE CORD ASSY FEM STR TO MALE 90 DEG 10/4 TPE CABLE	
CHECKED BY	DATE		
BWOODMAN	2016/03/25		
APPROVED BY	DATE		
BWOODMAN	2016/03/25		
MATERIAL NO.	DOCUMENT NO.		
-	SD-130064-013		

SHEET NO.	1 OF 1
THIS DRAWING CONTAINS INFORMATION THAT IS PROPRIETARY TO MOLEX INCORPORATED AND SHOULD NOT BE USED WITHOUT WRITTEN PERMISSION	