



**L.T.F.**

## QLUX DOB AC Line Voltage LED Series



### QLUXDOB16025W84LED9 25W 160mm Round LED Board

## QLUX DOB



<b>Wattage</b>	25W
<b>Power Factor</b>	0.99
<b>CRI</b>	92.1
<b>CCT Options</b>	2700K, 3000K
<b>Luminous Flux</b>	≈ 2128 lm
<b>Efficacy</b>	≈ 85 lm/W
<b>Number of LEDs</b>	84
<b>Beam Angle</b>	160°
<b>Dimensions</b>	160mm (OD)
<b>Dimming</b>	ELV & Triac Optional 0-10V



**RoHS**



NOTE: Measurements based on 3000K CCT model.

## FEATURES

- Driver On Board technology - No external LED driver required.
- CCT options 2700K, 3000K.
- Superior color rendering ≈ 92.6 CRI .
- High efficacy lumen output up to ≈ 117 lm/W.
- LM-80 compliant LEDs.
- Tight binning 3 step Mac Adam Ellipses.
- Uniform & crisp light source intensity.
- Hot spot free design.
- California Title 24 Compliant.
- Extra thin low profile.
- Low heat generation, easy thermal management.
- Easy to fit in new design or retrofit applications.
- 277V AC option available.
- L70 > 60,000 Hours



## APPLICATIONS

- Residential and Commercial
- New or Retrofit OEM Fixtures

## ELECTRICAL SPECIFICATIONS

Model #	Input	Wattage	CCT Options	Luminous Flux
QLUXDOBAR16025W84LED927	120V AC 0.21A 50/60Hz	25W	2700K	≈ 2100 lm
QLUXDOBAR16025W84LED930			3000K	≈ 2128 lm



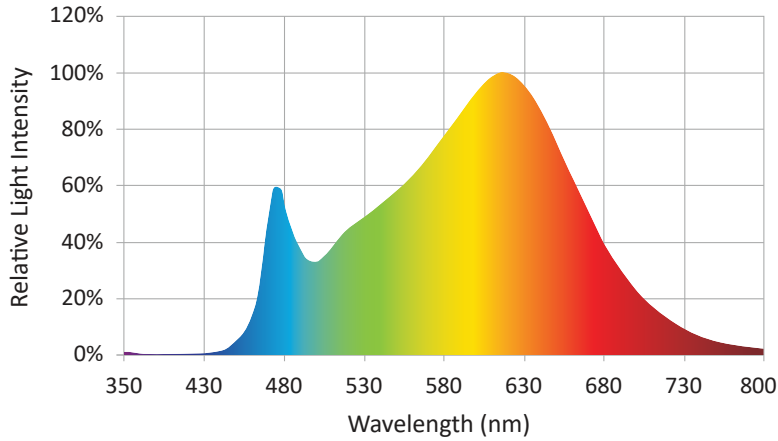
**L.T.F.**

**QLUX DOB AC Line Voltage LED Series**



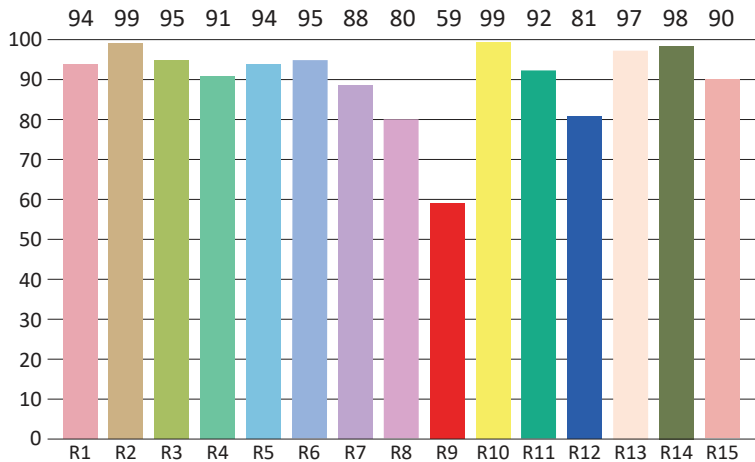
**QLUXDOB16025W84LED9  
25W 160mm Round LED Board**

**SPECTRORADIOMETRIC CHARACTERISTICS - 3000K**



**Luminous Flux:** 2128 lm  
**Radiant Flux:** 7.589 W  
**Efficacy:** 85.1 lm/W  
**Nominal CCT:** ANSI\_F3000K  
 x0=0.4400 y0=0.4030  
**Chromaticity Coordinates:**  
 x=0.4285 y=0.3944 u'=0.2493 v'=0.5162  
**Chromaticity Difference:** -0.00272 Duv  
**CCT:** 3067 K

**CRI TEST RESULTS - 3000K**



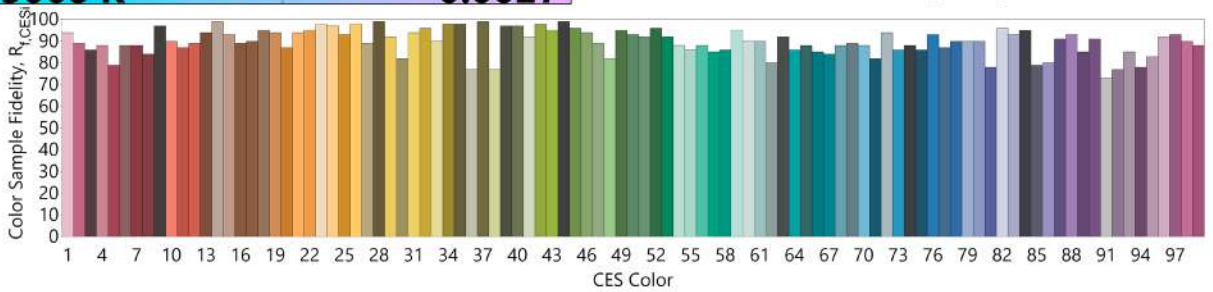
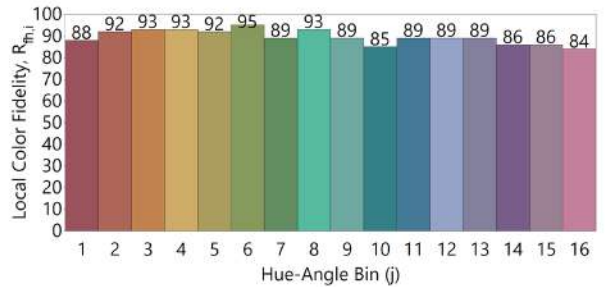
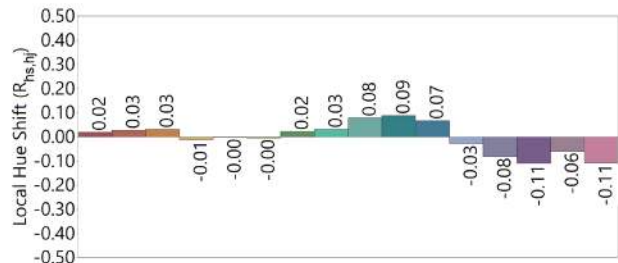
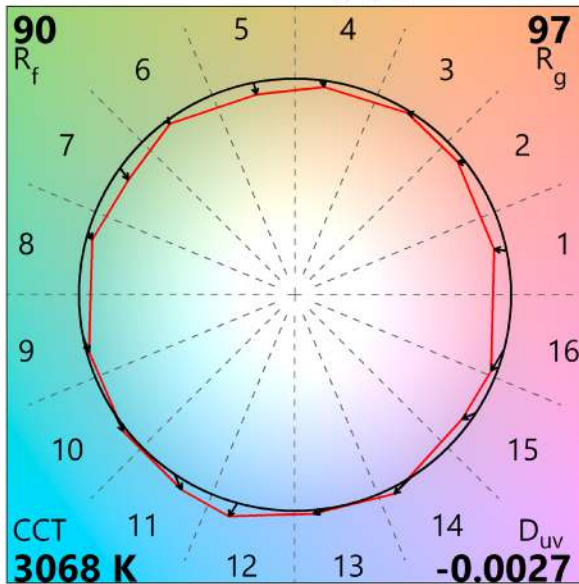
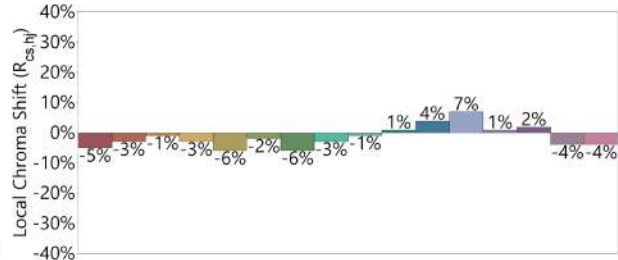
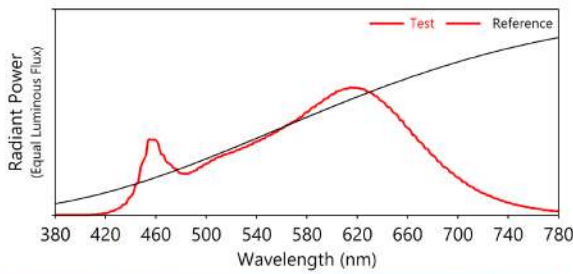
**Color Rendering Index (CRI):** 92.1  
**Dominant Wavelength:** 582.0 nm(E)  
**Peak Wavelength:** 615nm  
**Colour Fidelity Index:** Rf=88  
**Gamut Index:** Rg=96  
**Color Purity:** 0.4721  
**Color Ratio:** Kr=44.1% Kg=47.0% Kb=8.9%  
**Color Tolerance (SDCM):** 5.8  
**Bandwidth:** 155.5nm  
**Photosynthetically Active Radiation (PAR):** 7.18W  
**Photosynthetic Photon Flux (PPF):** 35.11 μmol/s

R1=94	R2=99	R3=95	R4=91	R5=94	R6=95	R7=88	R8=80
R9=59	R10=99	R11=92	R12=81	R13=97	R14=98	R15=90	Re=90



QLUXDOB16025W84LED9  
25W 160mm Round LED Board

IES TM-30-18 Test Results - 3000K





**L.T.F.**

**QLUX DOB AC Line Voltage LED Series**



**QLUXDOB16025W84LED9  
25W 160mm Round LED Board**

**ABSOLUTE MAXIMUM RATINGS (Ta=25°C)**

Parameter	Symbol	Value	Unit
Voltage	V in	132	Vac
Operating Temperature	---	-35~+50	°C
LED Solder Temperature	Ts	110	°C
Storage Temperature	Tstg	-40~+100	°C
ESD Sensitivity (HBM)	---	±4000	V
Surge	---	2500	Vac

**MECHANICAL SPECIFICATIONS**

LED Board Dimensions
160mm (OD)

